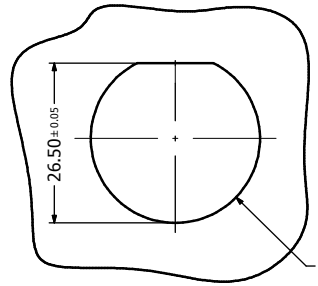


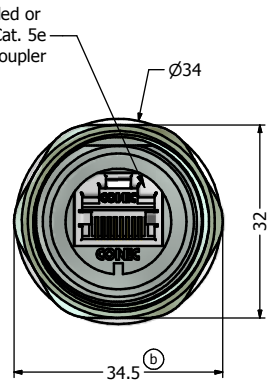
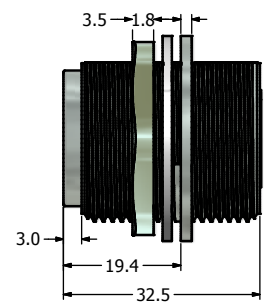
Notes:

1. Electrical Specifications:
 - Meets EIA/TIA-568-B.2 Cat.5e Specification
 - Contact Resistance: 20mOhm max.
 - Insulation Resistance: 500MOhm min. @ 100 VDC
 - Current Rating: 1.2A max. at 25° C
 - Working Voltage: 100 VDC
 - DWV: 1000 VDC/60s Contact to Contact, 1500 VDC/60s Contact to Metal Shell
 - Operating Temperature: -40° C to +85° C
2. Material and Finish:
 - Ⓓ - Receptacle Housing, Zinc Die-Cast, Nickel Plated
 - Cover, Panel Nut: Brass, Nickel Plated
 - Ball Chain: Copper Alloy, Nickel Plated
 - Panel Gasket: Silicon, Color: White
 - Ⓒ - Cover Gasket: Silicon, Color: White
 - RJ45 Jack Metal Shell: Copper Alloy, Nickel Plated
 - RJ45 Jack Plastic Housing: Glass filled PBT UL94 V-0, Color: Black
 - RJ45 Jack Contacts: Phosphor Bronze, Finish: 50u" Gold min. over Nickel
3. Connector can be front or rear mounted to a maximum panel thickness of 3.2mm.
4. IP67 rated when fully mated with appropriate mating connector

Directive 2002/95/EC RoHS Compliant



Recommended Panel Cutout Ⓓ



Description	Part Number
Metal Version Receptacle with Shielded RJ45 Inline Coupler + Cover Assembly	17-101604
Metal Version Receptacle with Unshielded RJ45 Inline Coupler + Cover Assembly	17-101614

THE DRAWING MAY NOT BE COPIED OR REPRODUCED IN ANY WAY AND MAY NOT BE PASSED ON TO A THIRD PARTY WITHOUT WRITTEN PERMISSION. OWNERSHIP AND COPYRIGHT OF CONEC CORPORATION. DO NOT ALTER CAD DRAWING BY HAND	Customer:			Tolerance Unless otherwise specified			Scale: 1:2:1	Dim. in mm
	Name	Title	Approval Date	0 PLC ±0.50	1 PLC ±0.38		Autodesk Inventor	Material: See Notes
				2 PLC ±0.25	3 PLC ±0.10		Receptacle + Cover Assembly Kit with Cat. 5e RJ45 Inline Coupler Metal Version	
	e	1 x e	Feb/06/2014	Vincent Ke	ANGLES ±3	2009 Date Name		Drawing No.: 17K1A249 Part No.: SEE P/N TABLE
	d	1 x d	Jan/12/2012	Vincent Ke		Draw. Jun. 05 Vincent Ke		DIN A3
c	1 x c	Jul/12/2011	Vincent ke		Appd. Jun. 05 J. Chaudry	Sheet 1/1		
b	2 x b	Mar/08/2011	Vincent ke					
a	original							
Rev.	Changes	Date	Name					