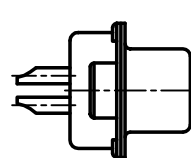
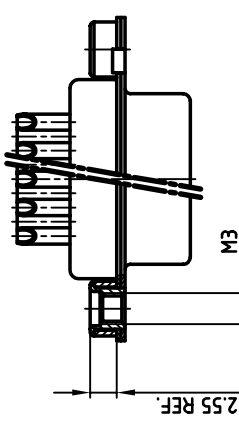
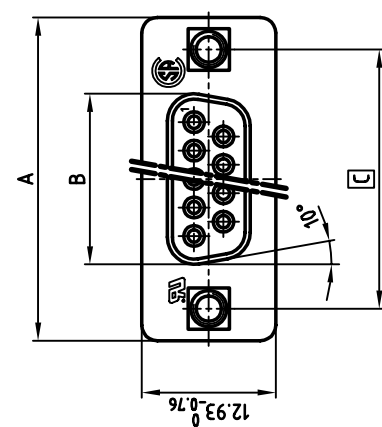
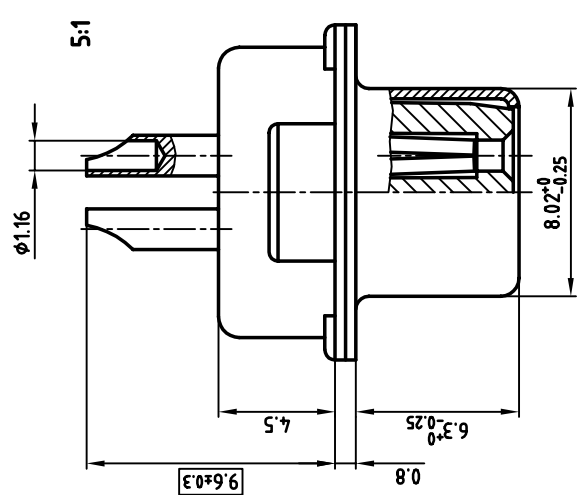


used for: D-SUB FILTER



NOTES:

1. METAL SHELLS: STEEL; min. 320µ" TIN
2. INSULATORS: PBT GF UL 94 V-0, BLACK
3. CONTACTS: COPPER ALLOY
4. PLATING: min. 8µ" HARD GOLD OVER min. 50µ" NICKEL
5. SOLDER CUP ACCEPTS CABLE AWG 20
6. THREADED INSERT: COPPER ALLOY; min. 200µ" TIN over 80µ" NICKEL
7. COLLAR: COPPER ALLOY; min. 200µ" TIN over 80µ" NICKEL
8. CAPACITANCE: 830pF ±20%
9. DIELECTRIC WITHSTANDING VOLTAGE: 424V DC
10. MAXIMUM TORQUE VALUE FOR THREAD: 6" LBS
11. = CRITICAL DIMENSION: SPC

CONEC CORPORATION BRAMPTON, ONTARIO		tolerance	2:1 (5:1)	
DO NOT ALTER CAD DRAWING BY HAND OWNERSHIP AND COPYRIGHT OF CONEC GMBH WRITTEN PERMISSION BE PASSED ON TO A THIRD PARTY WITHOUT REPRODUCED IN ANY WAY, AND MAY NOT THIS DRAWING MAY NOT BE COPIED OR		scale:	SEE NOTES	
		material:		
		title:	D-SUB FILTER FEMALE	
		2001	name	SOLDER CUP 9-37pos.
		drawn	Pareil	with threaded insert
		appd.	Resonnek	
		norm	DIN 41522	
		6-oid		
		dwg no:		AutoCAD 2000
		DIN-A		3
		sh: 1/1		
		part no:		24K1A198A
		SEE TABLE		
rev.	description	date	name	

POS.	A	B	C	PART-NO.
9	31.19	16.46	25.00 +0.2 -0.3	242A27140X
15	39.52	24.79	33.30 +0.5 -0.1	242A27150X
25	53.42	38.50	47.04 +0.3	242A27160X
37	69.70	54.96	63.50 +0.3	242A27170X