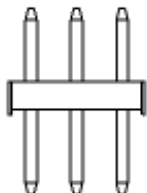
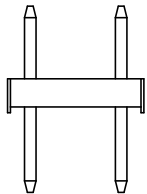
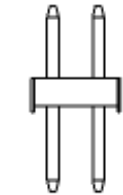
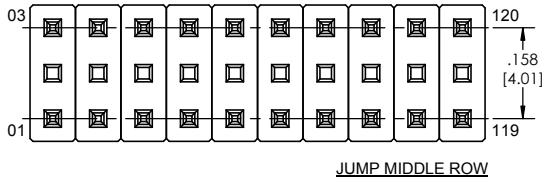
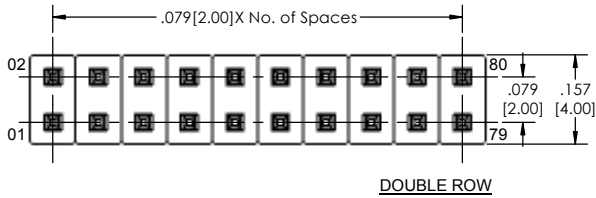
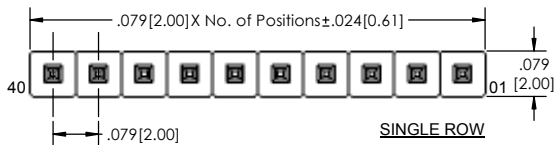
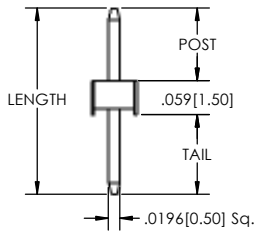
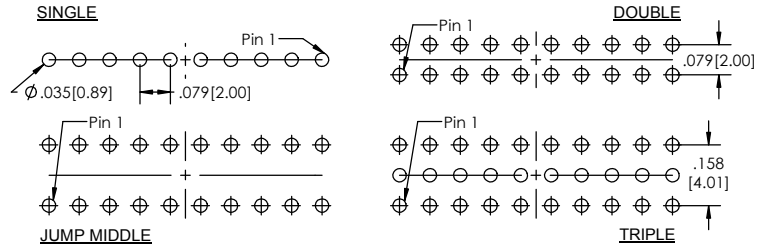
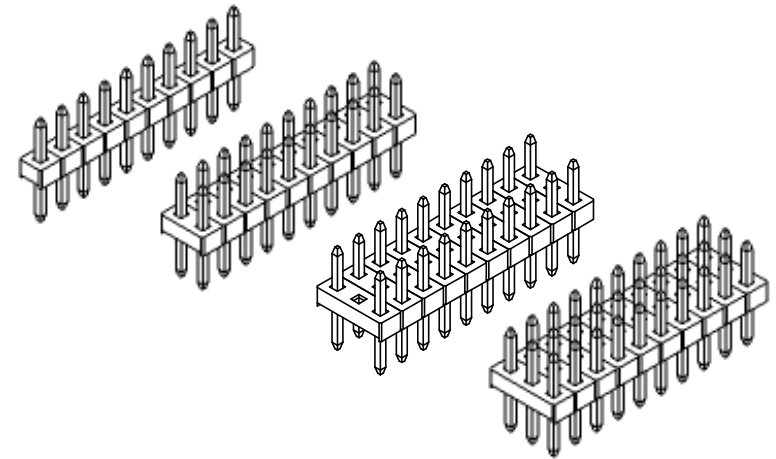
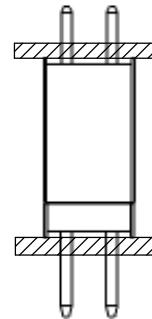


Recommended P.C. Board Layout
SCALE 4:1



APPLICATION



TSHS-2 **XX** - **X** - **XX** - **XX** - **XX** - **XXX** - **X** - **LF**
(A) (B) (C) (D) (E) (F) (G) (H)

- A. Pins Per Row - 1 through 40
- B. Row Specification - S= Single Row, D= Double Row, J= Jump Middle Row, T= Triple Row
- C. Pin Options - See Pin Options below
- D. Plating Options - See Plating Options below
- E. Lock Tight "LT" (Optional) - Leave blank if not needed, LT= With
- F. Polarized Position - Leave blank if not needed, If required, specify empty pin position - e.g. 012 for Pin 12
- G. Every Other Pin Filled (Option Only for Triple Row) - Leave blank if not needed, E= Filled
- H. Lead Free

Mates with:
BCSS,
BSSH,
BSSHC,
BSSQ,
BSSQC,
BSSQM,
LSMBC,
LSHSM,
SMBC,
SSHQ,
SSHQR,
SSHR,
SSHS,
SSHSM,
ULSMBC.

Plating options	
G	-10µ Gold on Contact Area/ Flash on Tail
T	-Matte Tin all Over
GT	-10µ Gold on Contact Area/ Matte Tin on Tail
H	-30µ Gold on Contact Area/ Matte Tin on Tail
F	-Gold Flash over Entire Pin
FT	-Gold Flash on Contact Area/ Matte Tin on Tail

Specifications:
Current Rating: 3.0 Ampere
Insulation Resistance: 1000M Ohms Min.
Dielectric Withstanding: 500V AC
Contact Resistance: 20M Ohms Max.
Operation Temperature: -40°C to +105°C
Max. Process Temperature
Peak: 260°C up to 10 secs.
Process: 230°C up to 60 secs.
Wave: 260°C up to 6 secs.
Manual Solder: 350°C up to 5 secs.

Materials:
Contact Material: Phosphor Bronze
Insulator Material: Nylon 6T
Plating: Au or Sn over 50µ" (1.27) Ni

Pin Options			
Length	Post Height	Tail Length	
.126[3.20mm]	.146[3.71mm]	.138[3.51mm]	02
.323[8.20mm]	.146[3.71mm]	.118[3.00mm]	04
	.158[4.01mm]	.106[2.70mm]	06
	.126[3.20mm]	.121[5.38mm]	08
.397[10.08mm]	.146[3.71mm]	.192[4.88mm]	10
	.158[4.01mm]	.180[4.57mm]	12
	.126[3.20mm]	.232[5.89mm]	14
.417[10.59mm]	.146[3.71mm]	.212[5.38mm]	16
	.158[4.01mm]	.200[5.08mm]	18
	.126[3.20mm]	.370[9.40mm]	20
.555[14.10mm]	.146[3.71mm]	.350[8.90mm]	22
	.158[4.01mm]	.338[8.59mm]	24
	.126[3.20mm]	.390[9.91mm]	26
.575[14.61mm]	.146[3.71mm]	.370[9.40mm]	28
	.158[4.01mm]	.358[9.09mm]	30

Tails may be clipped to achieve specific dimensions.
Products cut to specific sizes are uncancellable/ nonreturnable.
Parts are subject to change without notice.



PROPRIETARY AND CONFIDENTIAL
THE INFORMATION CONTAINED IN THIS DRAWING IS THE SOLE PROPERTY OF Major League Electronics. ANY REPRODUCTION IN PART OR AS A WHOLE WITHOUT THE WRITTEN PERMISSION OF Major League Electronics IS PROHIBITED.

UNLESS OTHERWISE SPECIFIED:		NAME DATE		
DIMENSIONS ARE IN INCHES		DRAWN	EOW 02/06/14	
TOLERANCES: ONE DECIMALS ±.100 TWO DECIMAL ±.100 THREE DECIMAL ±.005 FOUR DECIMAL ±.002		CHECKED	GWE 02/06/14	
NEXT ASSY USED ON		ENG APPR.		
APPLICATION		MFG APPR.		ADDRESS: 2533 Centennial Blvd. Jeffersonville, IN 47130 Phone: 812-670-4174 Fax: 812-670-4175 E-Mail: mle@mlelectronics.com
DO NOT SCALE DRAWING		INTERPRET GEOMETRIC TOLERANCING PER:		TITLE: TSHS-2 SERIES
		MATERIAL:		SIZE DWG. NO. C
		FINISH:		REV B
		SCALE 6:1		SHEET 1 OF 1