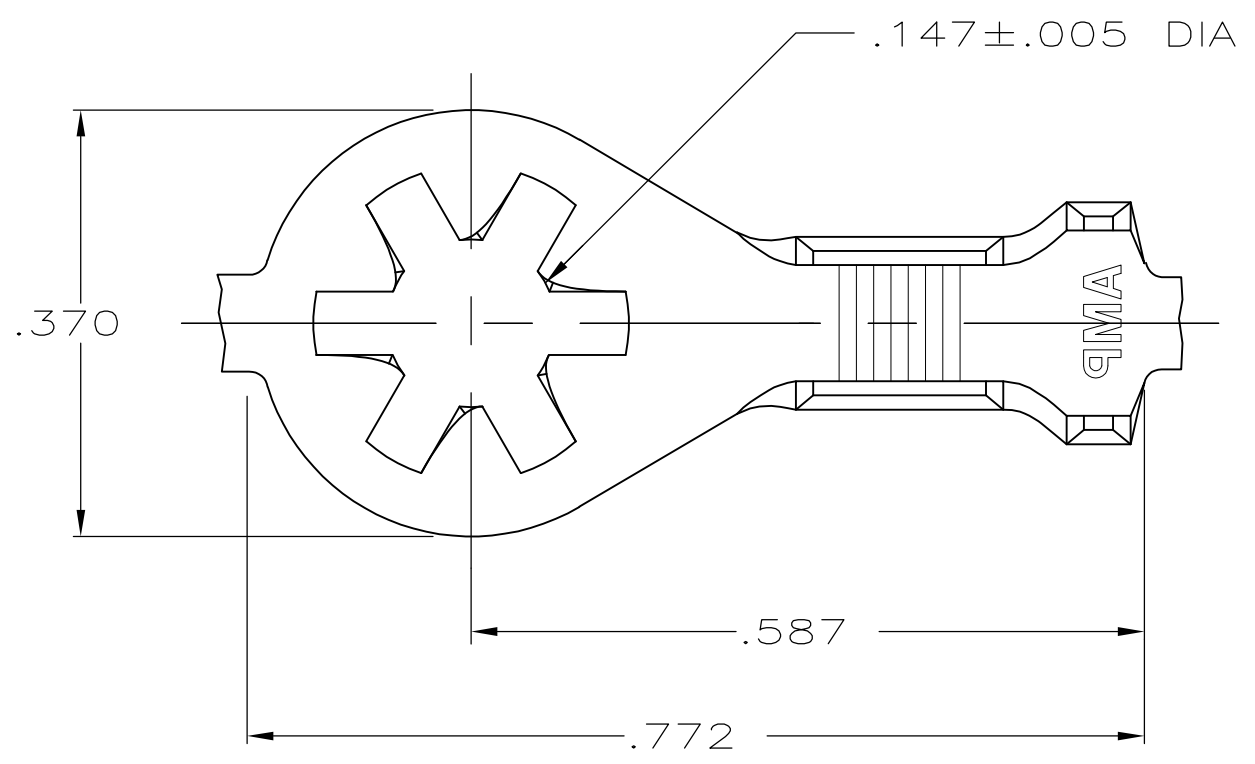
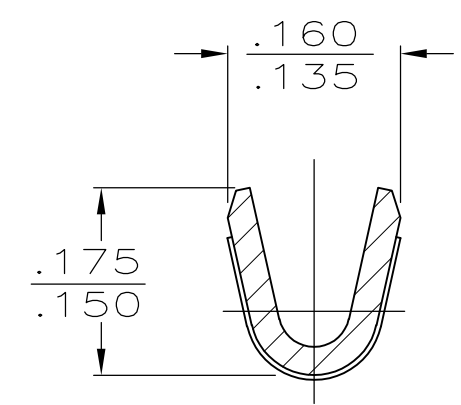


THIS DRAWING IS UNPUBLISHED. RELEASED FOR PUBLICATION
 © COPYRIGHT - By - ALL RIGHTS RESERVED.

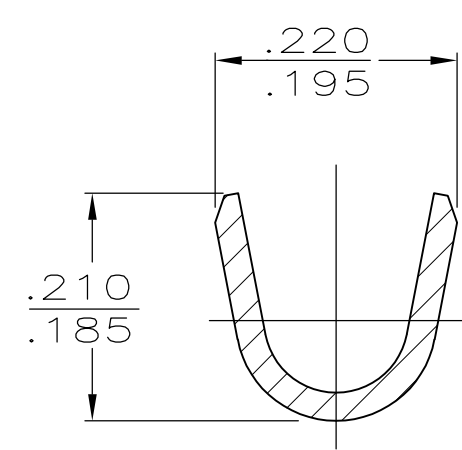
LOC	DIST	REVISIONS					
AF	50	P	LTR	DESCRIPTION	DATE	DWN	APVD
			K1	REVISED PER ECO-11-004917	11MAR11	RK	HMR



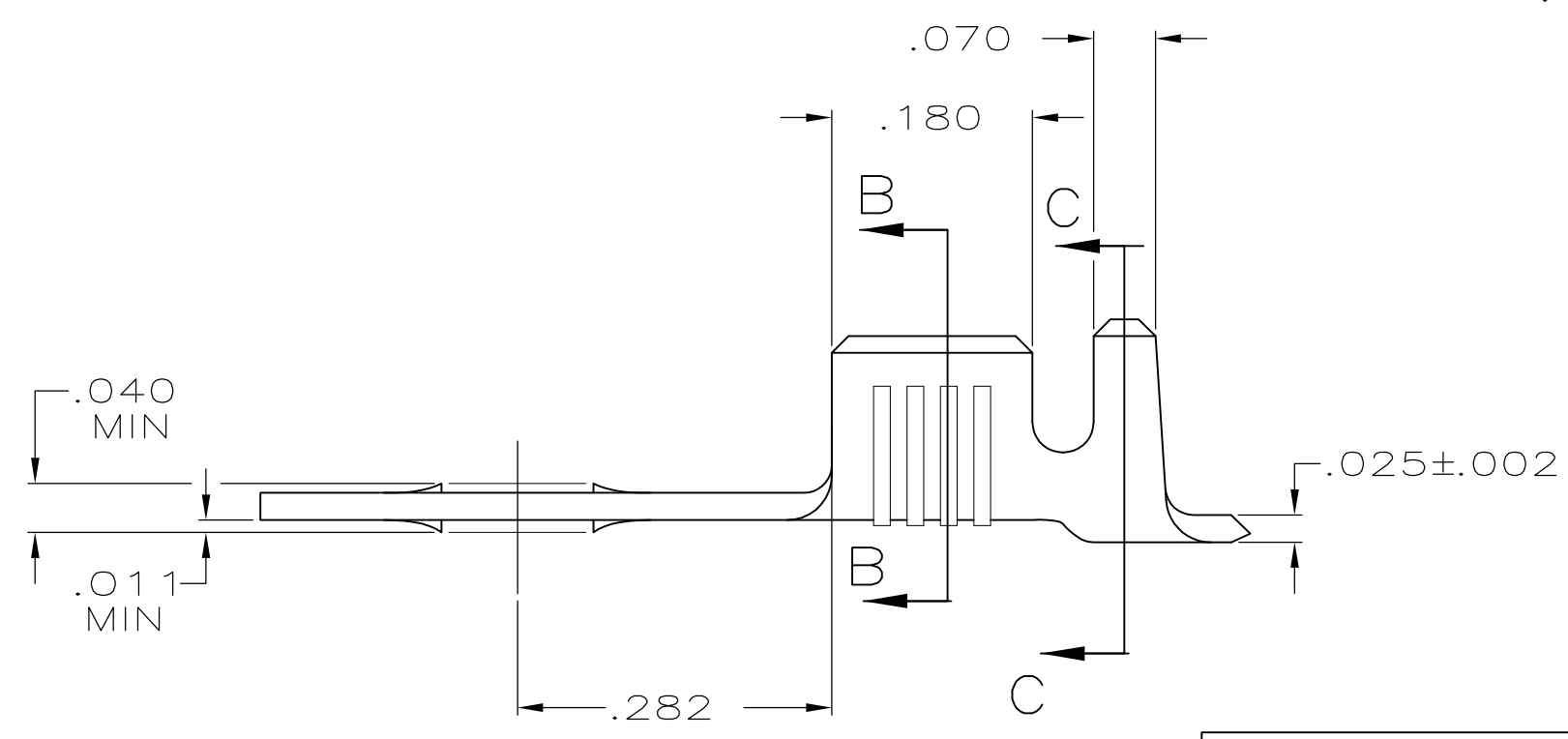
- 1 CONTINUOUS STRIP ON REELS
- 2 .000080 MIN TIN PLATE
- 3 .000150 MIN TIN PLATE
- 4 PRELIMINARY - NOT FOR PRODUCTION



SECTION B-B



SECTION C-C



3	.105-.145	18-14	4	61793-4
NICKEL PL	.105-.145	18-14	4	61793-2
2	.105-.145	18-14		61793-1
FINISH	INSULATION RANGE	WIRE SIZE	PART NO	

THIS DRAWING IS A CONTROLLED DOCUMENT.		DWN 5/15/87 D HOLLINGSWORTH	STE TE Connectivity														
DIMENSIONS: INCHES		CHK 11/23/87 G YETTER															
TOLERANCES UNLESS OTHERWISE SPECIFIED:		APVD 12/2/87 RP FRANTZ	NAME														
<table border="0"> <tr><td>0 PLC</td><td>± -</td></tr> <tr><td>1 PLC</td><td>± -</td></tr> <tr><td>2 PLC</td><td>± -</td></tr> <tr><td>3 PLC</td><td>± .015</td></tr> <tr><td>4 PLC</td><td>± -</td></tr> <tr><td>ANGLES</td><td>± -</td></tr> </table>		0 PLC	± -	1 PLC	± -	2 PLC	± -	3 PLC	± .015	4 PLC	± -	ANGLES	± -	PRODUCT SPEC	RING		
0 PLC	± -																
1 PLC	± -																
2 PLC	± -																
3 PLC	± .015																
4 PLC	± -																
ANGLES	± -																
MATERIAL T2 STEEL		FINISH SEE TABLE	APPLICATION SPEC	SIZE	CAGE CODE	DRAWING NO	RESTRICTED TO										
			WEIGHT -	A3	00779	C-61793	-										
			CUSTOMER DRAWING	SCALE 6:1	SHEET 1 OF 1	REV K1											