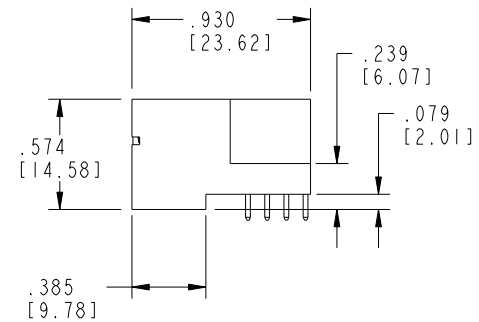
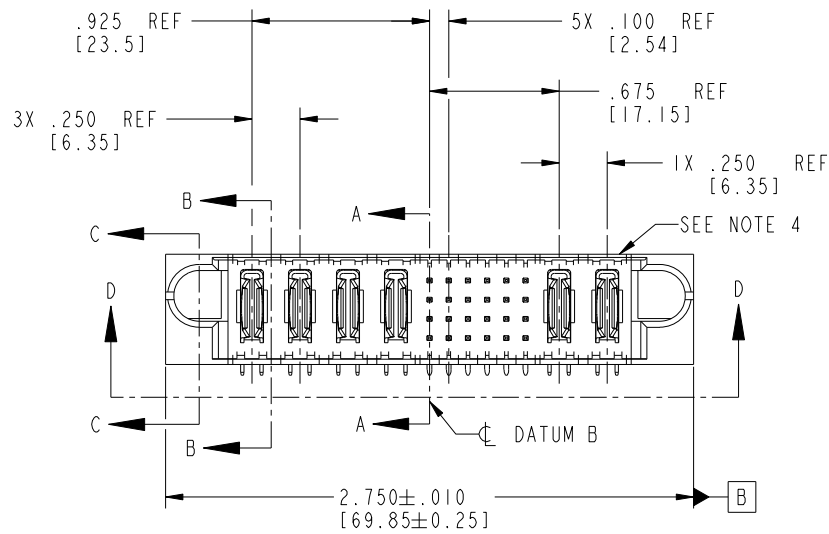
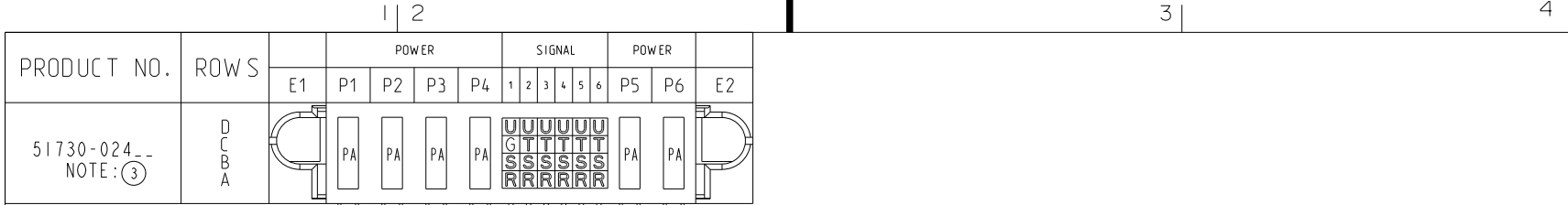


Tous droits strictement réservés. Reproduction ou communication a des tiers interdite sous quelque forme que ce soit sans autorisation écrite du propriétaire. Propriété de c FCI. Droits de reproduction FCI.



All rights strictly reserved. Reproduction or issue to third parties in any form whatever is not permitted without written authority from the proprietor. Property of FCI. Copyright FCI.



CODE	DIM "M" MATING LENGTH	CONTACT TYPE
G	.220 [5.59]	SIGNAL
R	.270 [6.86]	SIGNAL
S	.270 [6.86]	SIGNAL
T	.270 [6.86]	SIGNAL
U	.270 [6.86]	SIGNAL
PA	N/A [N/A]	POWER

mat'l code				SEE NOTE 2		tolerances unless otherwise specified		CUSTOMER		FCI	
ltr	ecn no.	dr	date	linear	.XX±.01/0.X±0.3	projection		COPY		www.fciconnect.com	
A	V11132	JWS	3/28/01		.XXX±.005/0.XX±0.13	INCH/MM		title		4P + 24S + 2P	
B	V20168	JWS	01-23-02	angles	.XXX±.0020/0.XXX±0.051	1:1		RIGHT ANGLE SOLDER HEADER		product family	
C	DG05-0243	SJ	07/26/05		0° ± 2°			PwrBlade		code	
D	DG05-0560	CS	12/20/05	dr	J. SHAFFER 01-23-02			size		213	
E	DG08-0237	W D	09/01/08	enrg	M. MOSTOLLER 01-23-02			dwg no		sheet	
F	DG08-0272	W D	09/25/08	chr	M. MOSTOLLER 01-23-02			A 51730-024		1 of 4	
				appd	M. MOSTOLLER 01-23-02						
sheet index	revision sheet	F 1	F 2	F 3	F 4						

Pro/E

PDM: Rev:F

STATUS: Released

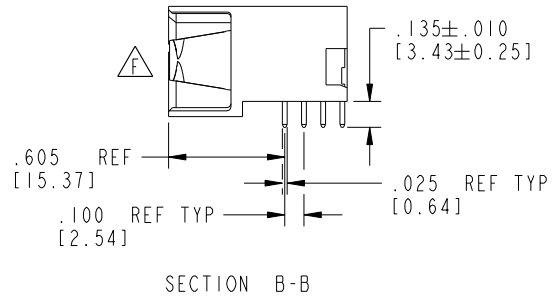
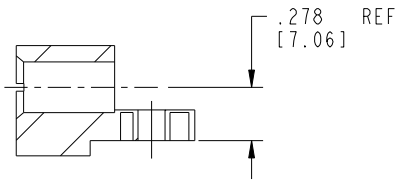
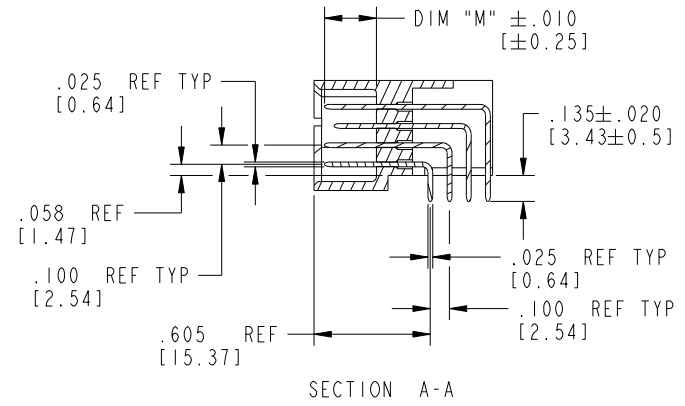
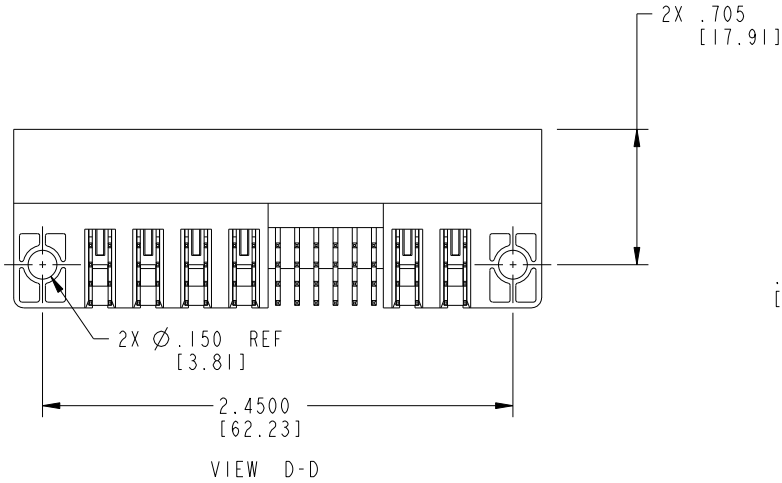
Printed: Dec 20, 2010

Tous droits strictement réservés. Reproduction ou communication a des tiers interdite sous quelque forme que ce soit sans autorisation écrite du propriétaire. Propriété de c FCI. Droits de reproduction FCI.

All rights strictly reserved. Reproduction or issue to third parties in any form whatever is not permitted without written authority from the proprietor. Property of FCI. Copyright FCI.



PRODUCT NUMBER  
51730-024--  
NOTE: ③



mat'l code		SEE NOTE 2		tolerances unless otherwise specified		CUSTOMER		 www.fciconnect.com	
ltr	ecn no.	dr	date	linear	.XX±.01/0.X±0.3	projection	title		
F					.XXY±.005/0.XX±0.13		4P + 24S + 2P		
				angles	.XXX±.0020/0.XXX±0.051		RIGHT ANGLE SOLDER HEADER		
				dr	J. SHAFFER 01-23-02	INCH/MM	product family		code
				engr	M. MOSTOLLER 01-23-02	1:1	PwrBlade		213
				chr	M. MOSTOLLER 01-23-02		size	dwg no	sheet
				appd	M. MOSTOLLER 01-23-02		A	51730-024	2 of 4
sheet index	revision sheet								

Pro/E

PDM: Rev:F

STATUS: Released

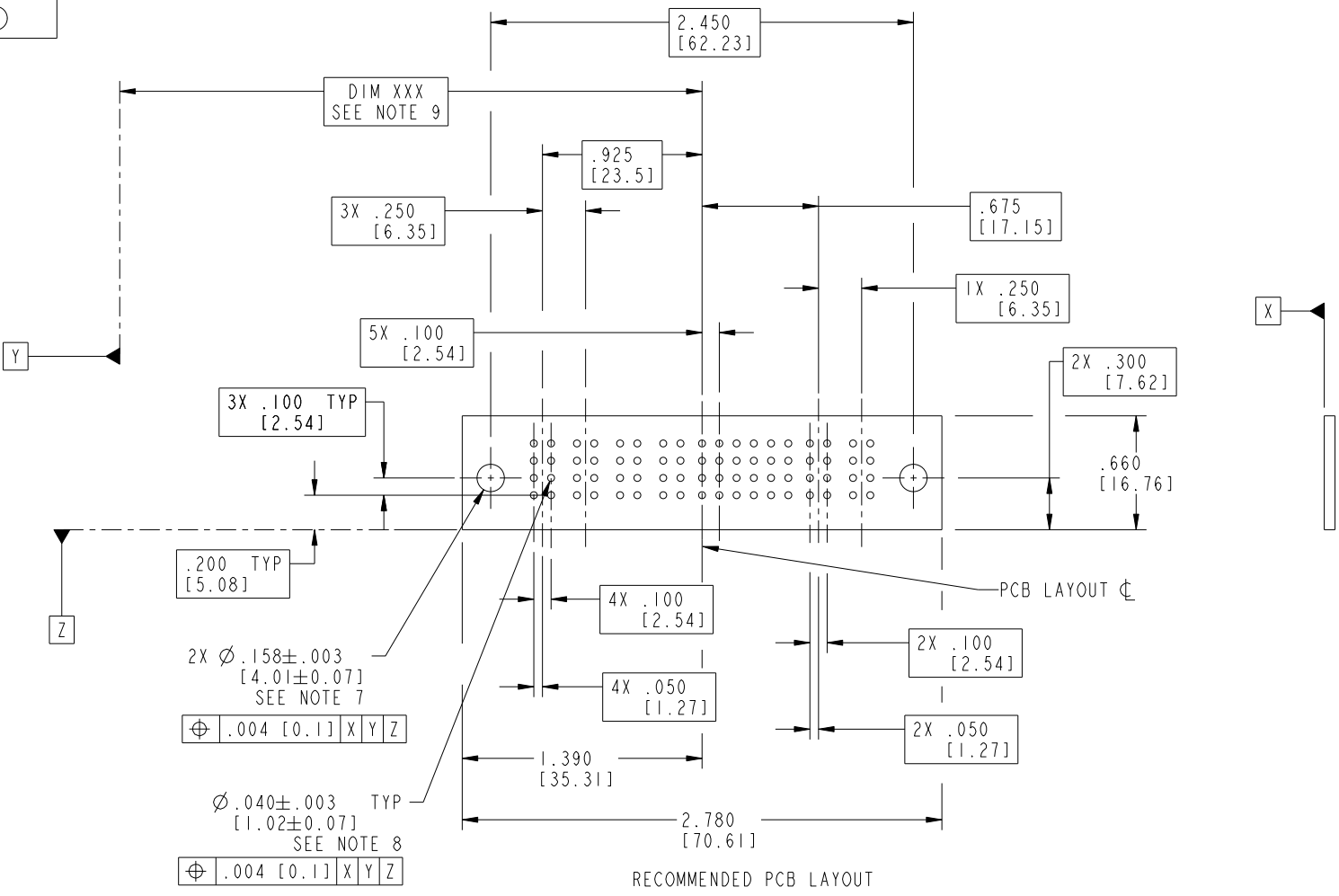
Printed: Dec 20, 2010

Tous droits strictement réservés. Reproduction ou communication a des tiers interdite sous quelque forme que ce soit sans autorisation écrite du propriétaire. Propriété de c FCI. Droits de reproduction FCI.



All rights strictly reserved. Reproduction or issue to third parties in any form whatever is not permitted without written authority from the proprietor. Property of FCI. Copyright FCI.

PRODUCT NUMBER  
51730-024--  
NOTE: ③



mat'l code		SEE NOTE 2		tolerances unless otherwise specified		CUSTOMER		FCI	
ltr	ecn no.	dr	date	linear	.XX±.01/0.X±0.3	COPY		www.fciconnect.com	
F				linear	.XXY±.005/0.XX±0.13	projection		title	
				angles	.XXX±.0020/0.XXX±0.051	⊕ ↗		4P + 24S + 2P	
					0° ± 2°	INCH/MM		RIGHT ANGLE SOLDER HEADER	
				dr	J. SHAFFER 01-23-02	scale		product family	
				engr	M. MOSTOLLER 01-23-02	1:1		PwrBlade	
				chr	M. MOSTOLLER 01-23-02			code	
				appd	M. MOSTOLLER 01-23-02			213	
sheet index		revision sheet						size	
								dwg no	
								A 51730-024	
								sheet	
								3 of 4	

1 | 2

Pro/E

PDM: Rev:F

STATUS: Released

Printed: Dec 20, 2010

3 |

4

A

A

B

B

PRODUCT NUMBER  
 51730-024--  
 NOTE: ③

NOTES:

1. DIMENSIONS AND TOLERANCES ARE IN ACCORDANCE WITH ASME Y14.5M, 1994 UNLESS OTHERWISE SPECIFIED.

CONNECTORS NOTES:

② HOUSING MATERIAL: UL 94 V-0 GLASS FILLED HIGH TEMP THERMO PLASTIC  
 POWER CONTACT MATERIAL: COPPER ALLOY  
 SIGNAL PIN MATERIAL: COPPER ALLOY

△③ SEE ITEM 1 & 2 IN PRINT 10064183 FOR PLATING SPEC OF 51730-024 AND 51730-024LF RESPECTIVELY.

④ "MANUFACTURER" NAME, P/N, AND DATE CODE TO APPEAR ON THIS SURFACE.

⑤ PRODUCT SPECIFICATION GS-12-149.

PCB - NOTES:

⑥ ALL HOLE DIAMETERS ARE FINISHED HOLE SIZE.

7. HOLD DOWN THROUGH HOLES ARE UNPLATED.

8.  $\varnothing .0453 \pm 0.0010$  [1.151 ± 0.025] DRILLED HOLES PLATED WITH  
 0.0003 [0.008] MIN SnPb OVER .001 [0.03]  
 TO .003 [0.08] Cu PLATING TO ACHIEVE  
 $\varnothing .040 \pm .003$  [1.02 ± .07] HOLE.

9. "DIM XXX" TO BE DETERMINED BY THE CUSTOMER.

10. A△SYMBOL WILL BE NEXT TO ANY DIMENSION, VIEW, OR NOTE WHICH HAS BEEN MODIFIED WITH THE CURRENT DRAWING REVISION.

Tous droits strictement réservés. Reproduction ou communication a des tiers interdite sous quelque forme que ce soit sans autorisation écrite du propriétaire. Propriété de c FCI. Droits de reproduction FCI.



All rights strictly reserved. Reproduction or issue to third parties in any form whatever is not permitted without written authority from the proprietor. Property of FCI. Copyright FCI.

mat'l code		SEE NOTE 2		tolerances unless otherwise specified		CUSTOMER				www.fciconnect.com	
ltr	ecn no.	dr	date	linear	.XX±.01/0.X±0.3	COPY		projection		title	
F					.XXX±.005/0.XX±0.13	INCH/MM				4P + 24S + 2P	
				angles	.XXX±.0020/0.XXX±0.051	scale		product family		code	
				dr	0° ± 2°	1:1		PwrBlade		213	
				enrg	J. SHAFFER 01-23-02			size		sheet	
				chr	M. MOSTOLLER 01-23-02			A		4 of 4	
				appd	M. MOSTOLLER 01-23-02			51730-024			
sheet index	revision sheet										