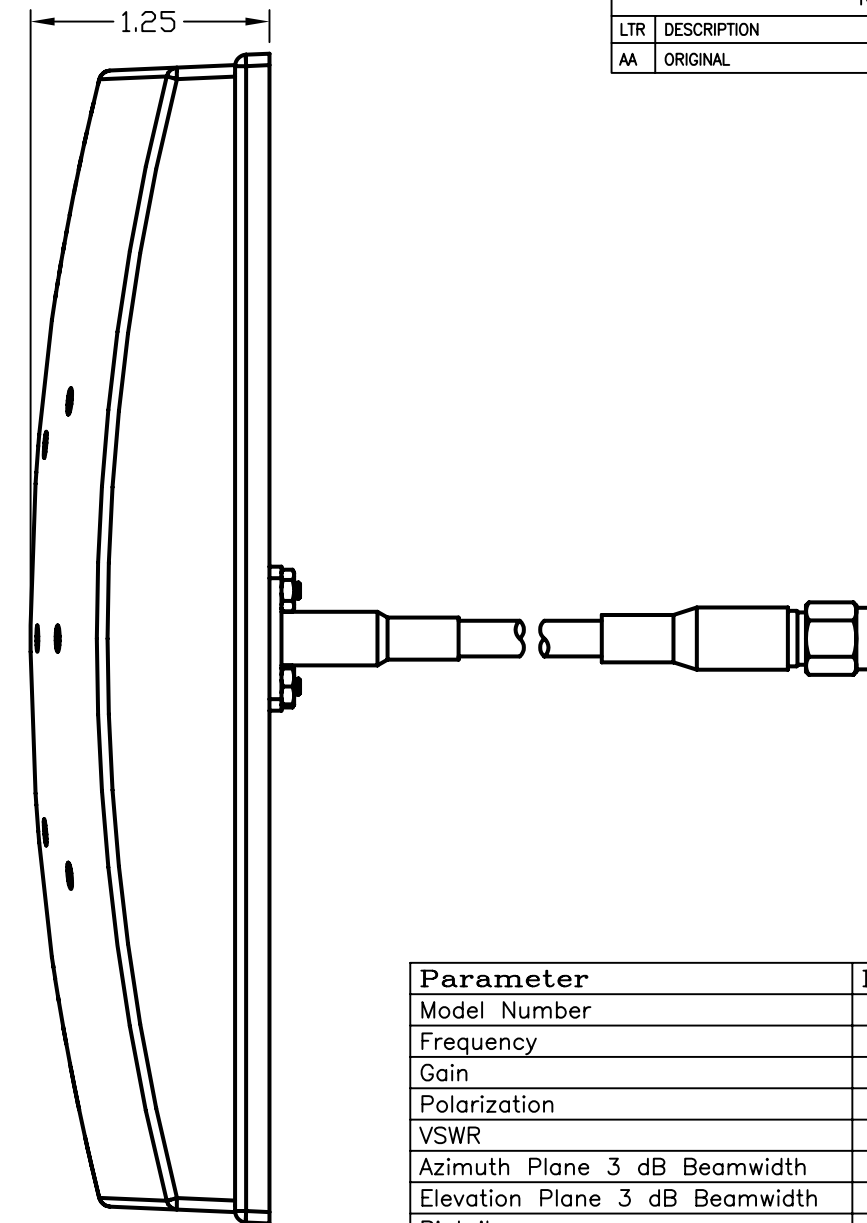
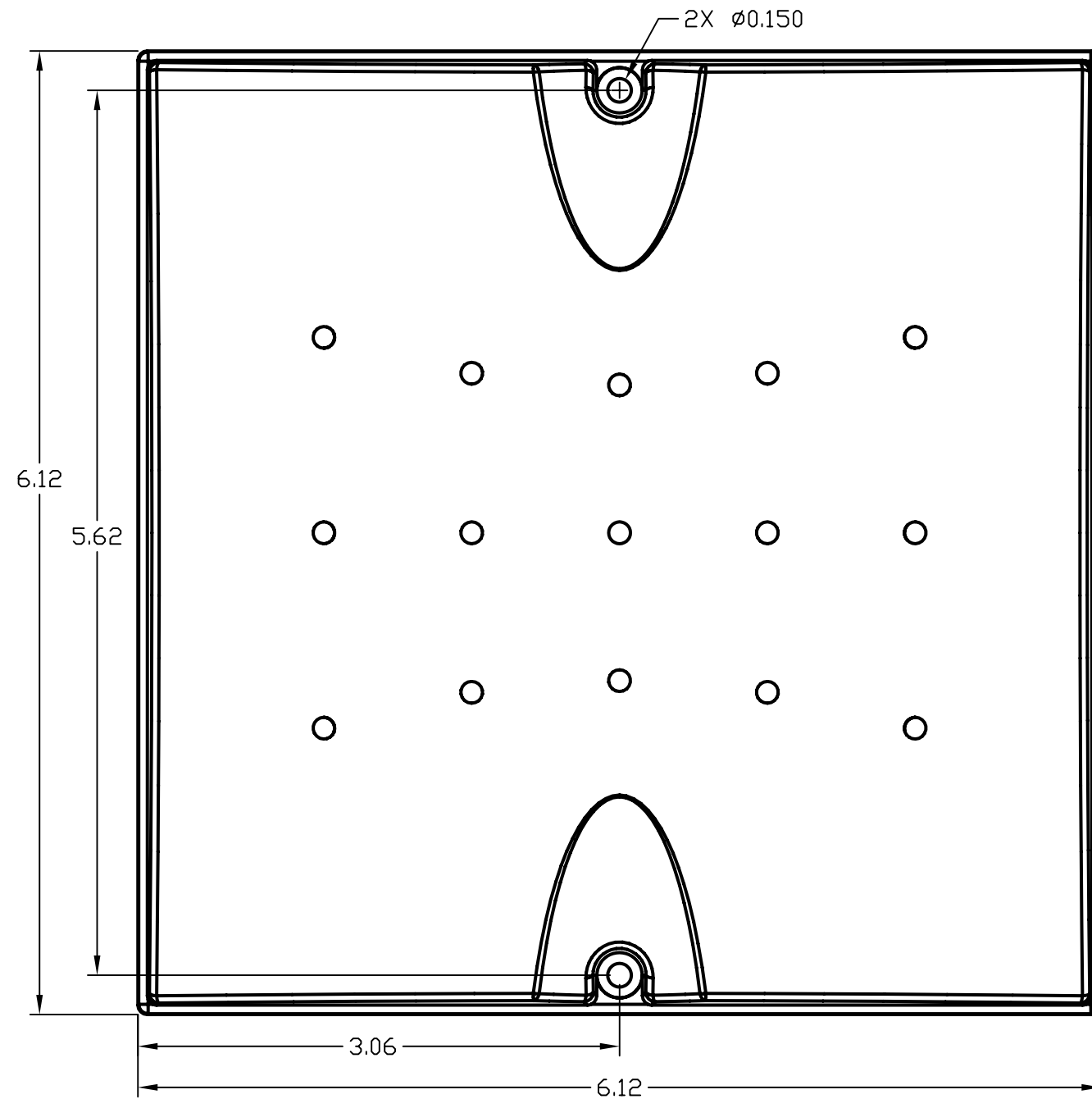



REVISION			
LTR	DESCRIPTION	DATE	INITIAL
AA	ORIGINAL	7-13-05	SWJ



Parameter	Performance
Model Number	SQ1853PP36SMM
Frequency	1850-1990 MHz
Gain	3.5 dBi
Polarization	Vertical Linear
VSWR	1.5:1 Nom.
Azimuth Plane 3 dB Beamwidth	Omnidirectional
Elevation Plane 3 dB Beamwidth	45°
Pigtail	36" Plenum Rated
RF Connector	SMA(m)
Power	50 Watts
Weight	.52 lbs

MATERIAL:	DRAWN S JOHNSON	DATE 7-13-05	
	ENGINEER J MORROW	DATE 7-13-05	
DO NOT SCALE DRAWING	ENGINEERING MGR A ALEVY	DATE 7-13-05	TITLE: SQ1853PP36SMM
UNLESS OTHERWISE SPECIFIED TOLERANCES ARE: ANGLES ± 2° FRACTIONS ± 1/16" .XX ± 0.030" .XXX ± 0.015"	FINISH:	DRAWING NO. SQ1853PP36SMMM0	REV AA
		SCALE 1:1	SIZE B
		SHEET 1 OF 1	

THIS DRAWING IS UNPUBLISHED.	RELEASED FOR PUBLICATION
© Copyright 2022 TE Connectivity Ltd.	ALL RIGHTS RESERVED.