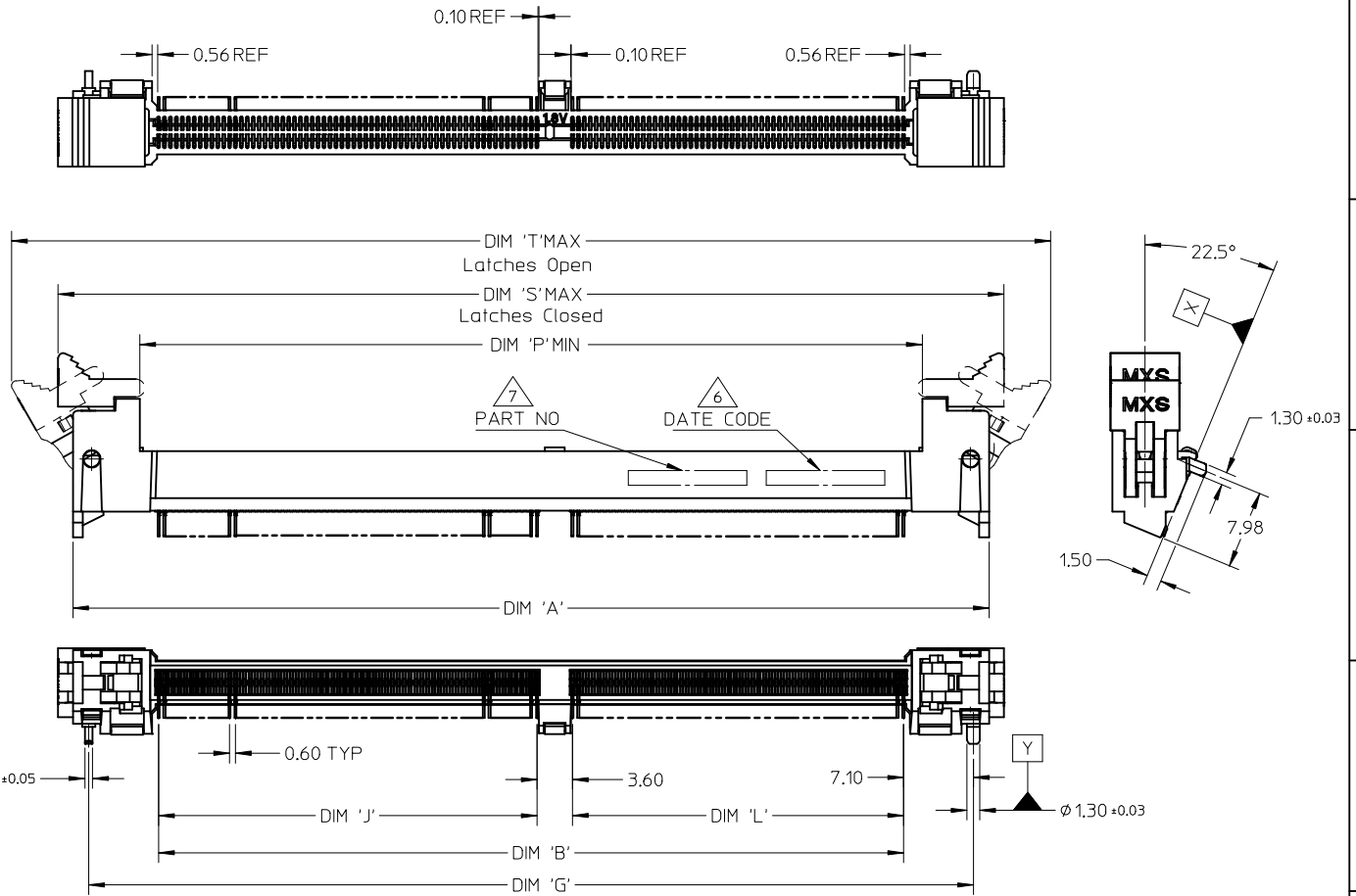


MINIMUM HEIGHT OF SOCKET WITH MODULE CARD HEIGHT OF 30.00MM AND THICKNESS OF 4MM.



- NOTES :
- MATERIAL :
 - HOUSING : HIGH TEMPERATURE LIQUID CRYSTAL POLYMER, UL94V-0
COLOUR : BLACK
 - CONTACTS : COPPER ALLOY
 - LATCHES : HIGH TEMPERATURE NYLON, UL94V-0
COLOUR : NATURAL (OFF-WHITE)
 - COVER : HIGH TEMPERATURE NYLON, UL 94V-0
COLOUR : BLACK

- FINISH
 - CONTACTS : 0.76 MICROMETER (30 MICROINCH) MIN GOLD OVER
1.25 MICROMETER (50 MICROINCH) MIN NICKEL
 - SMT TAIL : 2.54 MICROMETER (100 MICROINCH) MIN TIN OVER
1.25 MICROMETER (50 MICROINCH) MIN NICKEL
- ACCEPTS 1.0mm THICK MEMORY MODULE PER JEDEC MO-244 FOR 244 CKTS AND MO-258 FOR 200 CKTS.
- PRODUCT SPECIFICATION : PS-87783-001.
- PACKING SPECIFICATION: SEE TABLE IN SHEET 4.

△ DATE CODE SHALL BE MARKED LEGIBLY AS SHOWN : YY DDD.

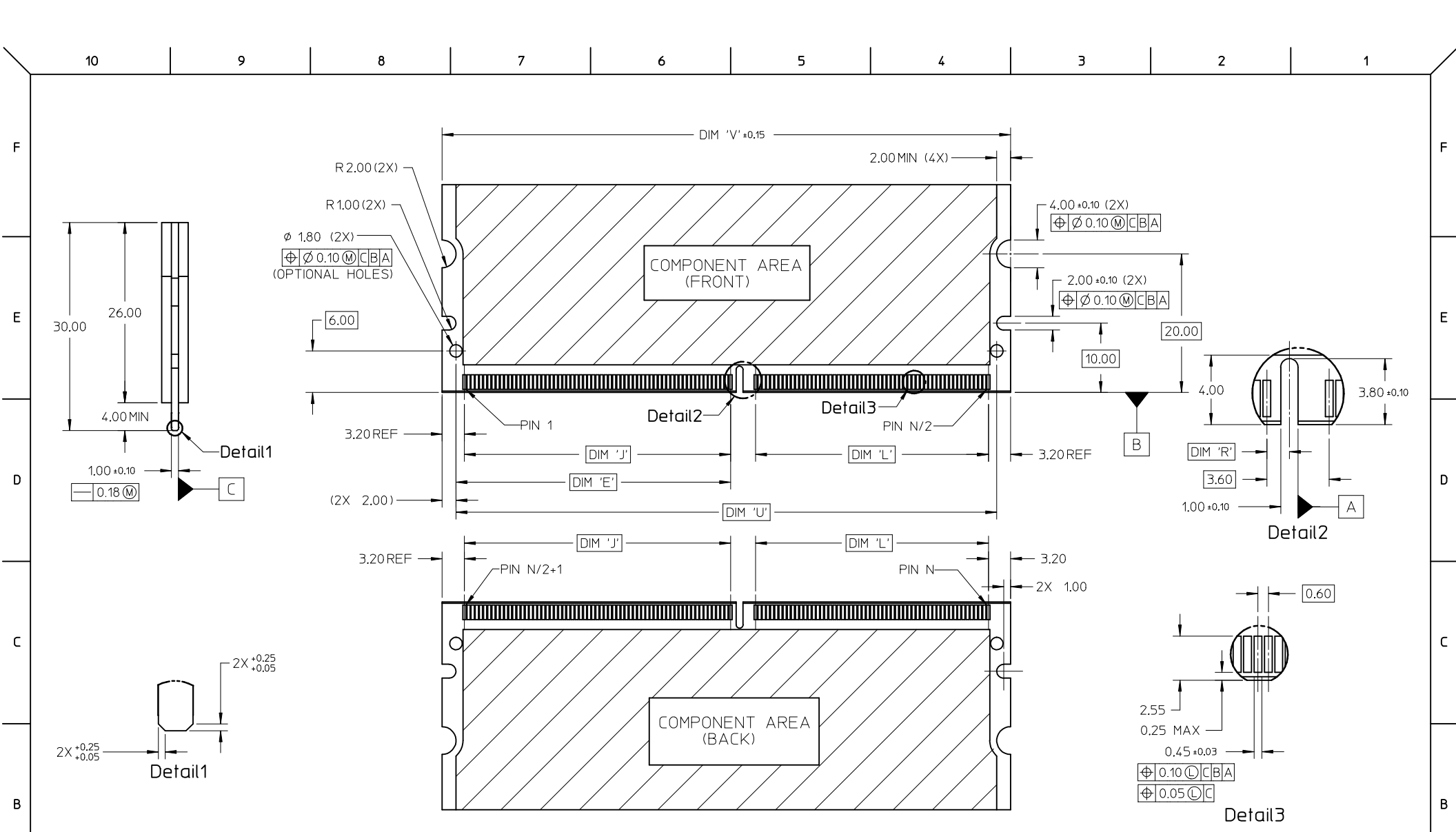
△ PART NUMBER SHALL BE MARKED LEGIBLY AS SHOWN : 87783-XXXX (REFER TO TABLE).

ADD NEW PART NO. EC NO: S2012-0461	2012/01/03	QUALITY SYMBOLS ▽=0 ◻=0
	DRW:NEKSOH	
	CH'KD:CGTAN	
	APPR:SHLENI	
REV	DESCRIPTION	

GENERAL TOLERANCES (UNLESS SPECIFIED)	
	mm INCH
4 PLACES	± --- ± ---
3 PLACES	± --- ± ---
2 PLACES	± 0.13 ± ---
1 PLACE	± 0.25 ± ---
ANGULAR ± 1 °	
DRAFT WHERE APPLICABLE MUST REMAIN WITHIN DIMENSIONS	

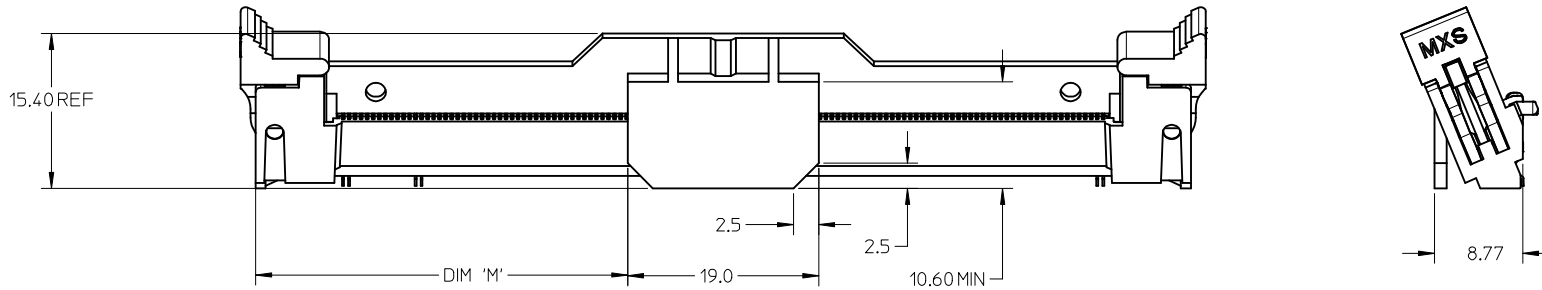
DIMENSION STYLE		SCALE	DESIGN UNITS	THIRD ANGLE PROJECTION
MM ONLY		NTS	METRIC	☉
DRAWN BY	DATE	TITLE		
MLONG	2003/08/04	ANGLE MINI DIMM		
CHECKED BY	DATE	0.6MM PITCH, 244/200 CKT		
SRRAMESH	2004/11/19	22.5 DEG		
APPROVED BY	DATE	MOLEX MOLEX INCORPORATED		
GGLEE	2004/11/19	DOCUMENT NO. SD-87783-001		
MATERIAL NO.		SHEET NO. 1 OF 4		

SIZE	THIS DRAWING CONTAINS INFORMATION THAT IS PROPRIETARY TO MOLEX INCORPORATED AND SHOULD NOT BE USED WITHOUT WRITTEN PERMISSION		
A3			



ADD NEW PART NO. EC NO: S2012-0461 DRW: KEK30H CHKD: CGTAN APPR: SILENI REV	2012/01/03 2012/09/12 2012/09/18 DESCRIPTION	QUALITY SYMBOLS ▽=0 ◻=0	GENERAL TOLERANCES (UNLESS SPECIFIED)		DIMENSION STYLE MM ONLY		SCALE NTS	DESIGN UNITS METRIC	THIRD ANGLE PROJECTION	
			mm	INCH	DRAWN BY MLONG	DATE 2003/08/04	TITLE ANGLE MINI DIMM 0.6MM PITCH, 244/200 CKT 22.5 DEG			
4 PLACES ± --- ± ---			3 PLACES ± --- ± ---		CHECKED BY SRRAMESH		DATE 2004/11/19		MOLEX INCORPORATED	
2 PLACES ± 0.13 ± ---			1 PLACE ± 0.25 ± ---		APPROVED BY GGLEE		DATE 2004/11/19			
ANGULAR ± 1 °			DRAFT WHERE APPLICABLE MUST REMAIN WITHIN DIMENSIONS		MATERIAL NO. SEE TABLE		DOCUMENT NO. SD-87783-001		SHEET NO. 2 OF 4	
					SIZE A3	THIS DRAWING CONTAINS INFORMATION THAT IS PROPRIETARY TO MOLEX INCORPORATED AND SHOULD NOT BE USED WITHOUT WRITTEN PERMISSION				

10 9 8 7 6 5 4 3 2 1



SHOWN WITH PICK & PLACE COVER

CKT SIZE 'N'	PART NUMBER	MODULE CARD	VOLTAGE KEY	DIM 'R'	DIM 'E'	DIM 'J'	DIM 'L'	DIM 'M'	DIM 'P'	DIM 'G'	DIM 'S'	DIM 'T'	DIM 'U'	DIM 'V'	DIM 'W'	DIM 'X'	DIM 'Y'	DIM 'Z'	DIM 'A'	DIM 'B'	TRAY P/N PACKAGING SPEC
244	87783-0001	DDR2	1.8 V	1.30	39.60	38.40	33.60	37.0	79.0	89.80	96.0	106.20	78.00	82.00	78.0	82.00	96.20	42.50	93.0	75.60	89990-8198 89990-8199 PK-87783-001
	87783-0301	DDR3	1.5 V	2.30																	78888-8026 PK-87783-003 (HARDTRAY)
	87783-6301																				
200	87783-0201	DDR2	1.8 V	1.30	24.60	23.40	35.40	30.40	65.8	76.60	82.8	93.00	64.80	68.80	64.8	68.80	83.00	44.30	79.8	62.40	89990-8196 89990-8197 PK-87783-002
	87783-0202	DDR	2.5 V	2.30																	

ADD NEW PART NO. EC NO: S2012-0461 DRWNEKSOH 2012/01/03 CHYKD:GJTAN 2012/09/12 APPR:SHLENI 2012/09/18	QUALITY SYMBOLS ▽=0 ▽=0	GENERAL TOLERANCES (UNLESS SPECIFIED)		DIMENSION STYLE	SCALE	DESIGN UNITS	THIRD ANGLE PROJECTION		
				MM ONLY	NTS	METRIC			
				mm	INCH	DRAWN BY		DATE	TITLE
				4 PLACES ± ---	± ---	MLONG	2003/08/04		ANGLE MINI DIMM
		3 PLACES ± ---	± ---	CHECKED BY		DATE	0.6MM PITCH, 244/200 CKT		
		2 PLACES ± 0.13	± ---	SRRAMESH		2004/11/19	22.5 DEG		
		1 PLACE ± 0.25	± ---	APPROVED BY		DATE	MOLEX INCORPORATED		
		ANGULAR ± 1 °		GGLLEE		2004/11/19			
		DRAFT WHERE APPLICABLE MUST REMAIN WITHIN DIMENSIONS		MATERIAL NO.		DOCUMENT NO.	SHEET NO.		
				SEE TABLE		SD-87783-001	4 OF 4		
				THIS DRAWING CONTAINS INFORMATION THAT IS PROPRIETARY TO MOLEX INCORPORATED AND SHOULD NOT BE USED WITHOUT WRITTEN PERMISSION					

9 8 7 6 5 4 3 2 1