

THIS DRAWING IS UNPUBLISHED. RELEASED FOR PUBLICATION 20
 © COPYRIGHT 20 BY - ALL RIGHTS RESERVED.

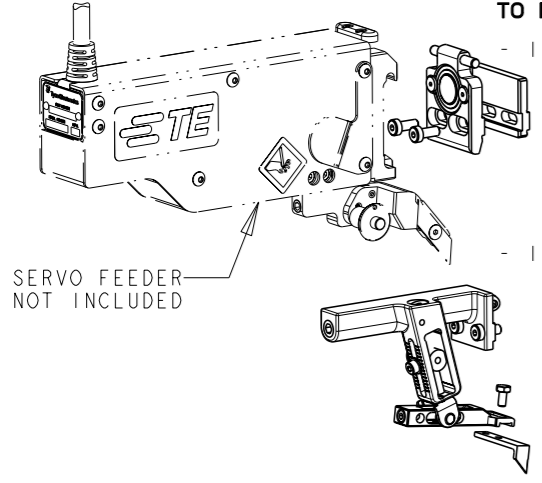
PART NUMBER	REV	FIRST USED
2119950-1	E	-

LOC	DIST	REVISIONS				
P	LTR	DESCRIPTION	DATE	DWN	APVD	
A	00					
	C	ECR-11-009990	12MAY2011	BW	TE	
	E	ECR-11-015447	26JUN2011	BW	DP	

FEED CONVERSION INSTRUCTIONS:

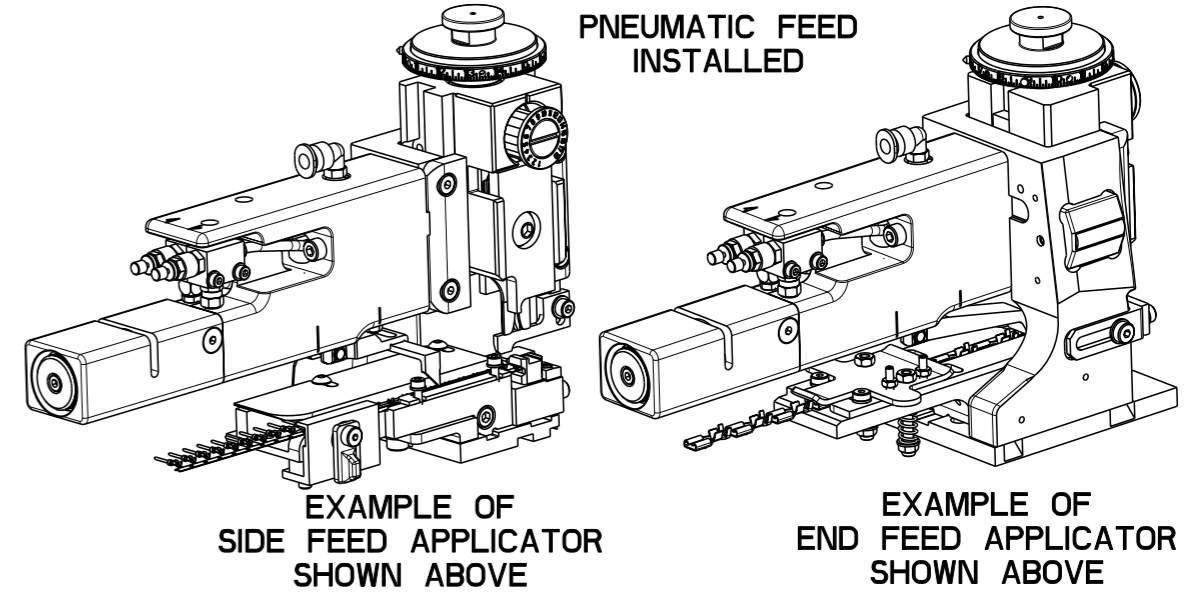
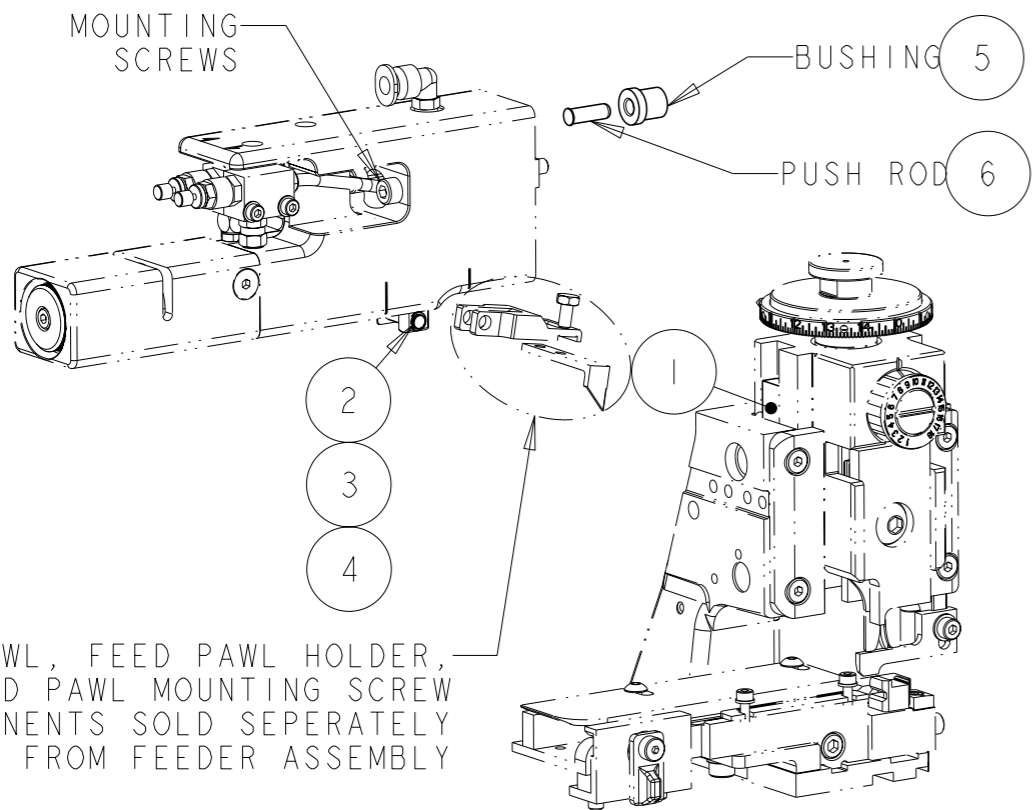
TO REMOVE EXISTING APPLICATOR FEED COMPONENTS:

- IF REMOVING SERVO FEEDER
 - DISENGAGE SERVO FEEDER FROM LATCH PLATE
 - REMOVE THE TWO SOCKET HEAD CAP SCREWS HOLDING THE LATCH PLATE TO THE APPLICATOR HOUSING
 - REMOVE LATCH PLATE AND LATCH PLATE SPACER (IF USED) FROM APPLICATOR
- IF REMOVING MECHANICAL FEEDER
 - REMOVE THE TWO SOCKET HEAD CAP SCREWS HOLDING THE MECHANICAL FEEDER ASSEMBLY TO THE APPLICATOR HOUSING
 - REMOVE MECHANICAL FEEDER ASSEMBLY FROM APPLICATOR
 - REMOVE MECHANICAL FEEDER FEED CAM FROM APPLICATOR RAM AS WELL AS FEED CAM IN SPARE STORAGE LOCATION (SEE INSTRUCTION SHEET 408-10389 OR 408-10390: SECTION 2)



INSTALLING NEW APPLICATOR FEED COMPONENTS:

- INSTALLING PNEUMATIC FEEDER
 - INSTALL PNEUMATIC FEEDER FEED CAM ONTO APPLICATOR RAM (IN PROPER POSITION AS REFERENCED ON APPLICATOR ASSEMBLY DRAWING OR SEE INSTRUCTION SHEET 408-10389 OR 408-10390: SECTION 2)
 - LUBRICATE AND INSERT BUSHING AND PUSH ROD INTO HOLE IN APPLICATOR HOUSING
 - PLACE PNEUMATIC FEEDER ASSEMBLY ON KEY SLOT OF APPLICATOR HOUSING
 - INSTALL THE TWO SOCKET HEAD CAP SCREWS THAT HOLD THE PNEUMATIC FEEDER ASSEMBLY TO THE APPLICATOR HOUSING
 - REFER TO INSTRUCTION SHEET 408-10389 OR 408-10390; SECTION 5 FOR PROPER ADJUSTMENT PROCEDURES.



SEE APPLICATOR STYLE CONVERSION CHART ON APPLICATOR ASSEMBLY DRAWING FOR ITEMS THAT ARE REQUIRED IN ADDITION TO RETROFIT KIT COMPONENTS

QTY	UNIT	PART NO	DESCRIPTION	ITEM NO
1	-	2119950	PRINT, RETROFIT KIT, PNEUMATIC FEED	7
1	-	2119640-1	PUSH ROD, AIR FEED	6
1	-	2079988-1	BUSHING, LCH5-12, MISUMI	5
2	-	21045-3	RING, RETAIN, EXTERN, 3/16 CRESCENT	4
1	-	240638-1	SPRING, FEED FINGER	3
1	-	3-23627-7	PIN, RETAIN, GRVD, 3/16 x .854	2
1	-	18023-9	SCR, SKT HD CAP M4 x 6.0	1
-1	U/M	PART NO	DESCRIPTION	ITEM NO

THIS DRAWING IS A CONTROLLED DOCUMENT.		DWN B. WEAVER 05NOV2010	TE Connectivity	
DIMENSIONS: mm		CHK A. WILL 05NOV2010		
TOLERANCES UNLESS OTHERWISE SPECIFIED:		APVD D. PFAUTZ 05NOV2010	NAME RETROFIT KIT, PNEUMATIC FEED	
0 PLC ± 1 PLC ± 2 PLC ± 3 PLC ± 4 PLC ± ANGLES ±		PRODUCT SPEC	-	
MATERIAL -		APPLICATION SPEC	-	
FINISH -		WEIGHT -	SIZE A3	CAGE CODE 00779
		CUSTOMER ACCESSIBLE PRODUCTION DRAWING	DRAWING NO C-2119950	RESTRICTED TO -
		SCALE 2:5	SHEET 1 OF 1	REV E