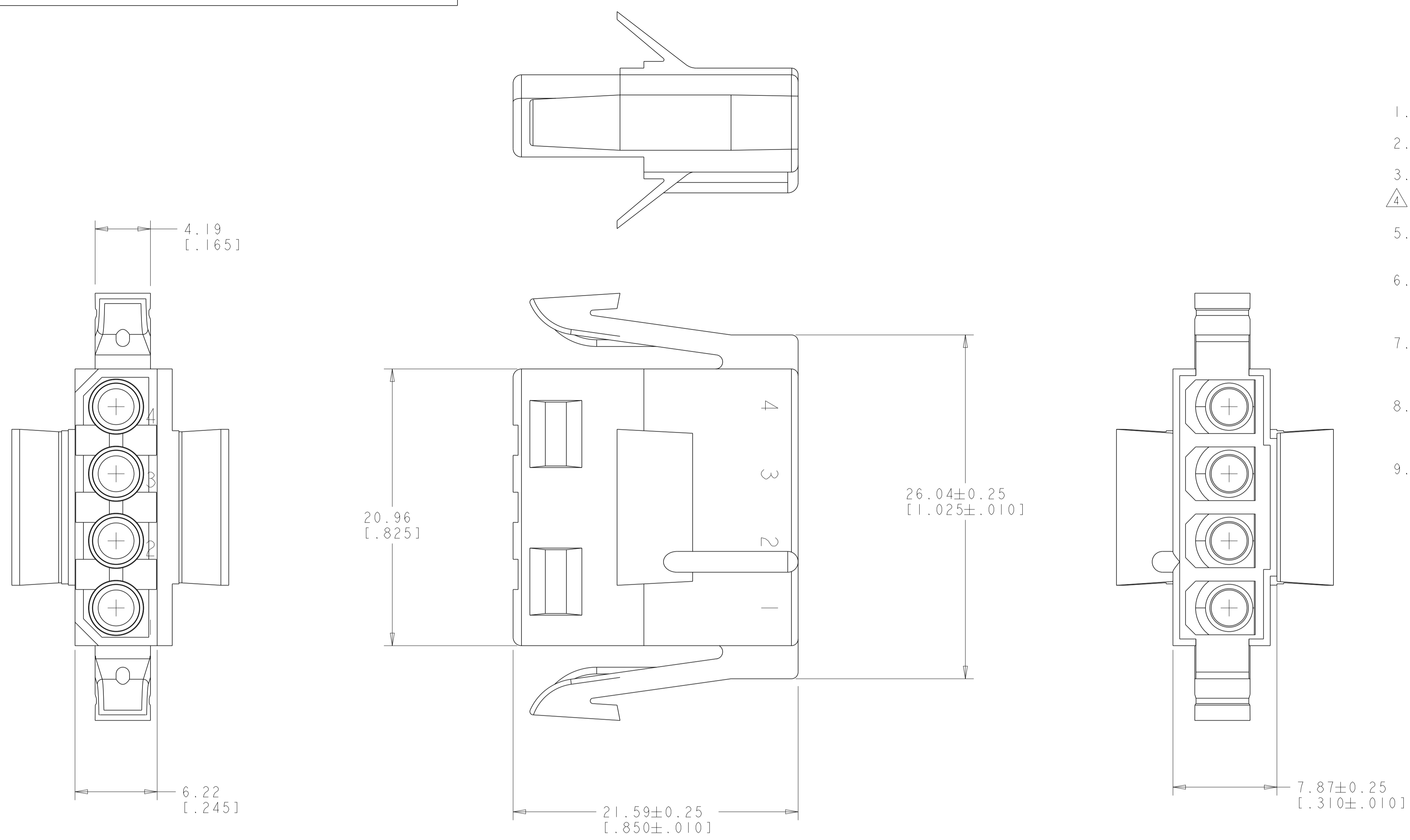
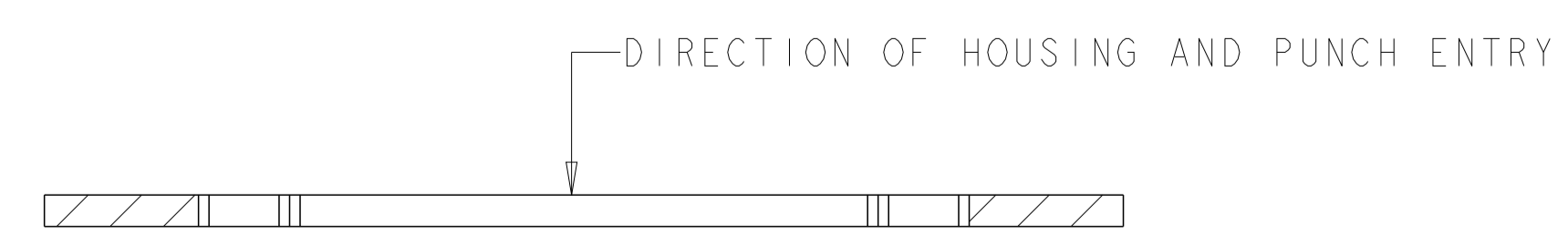
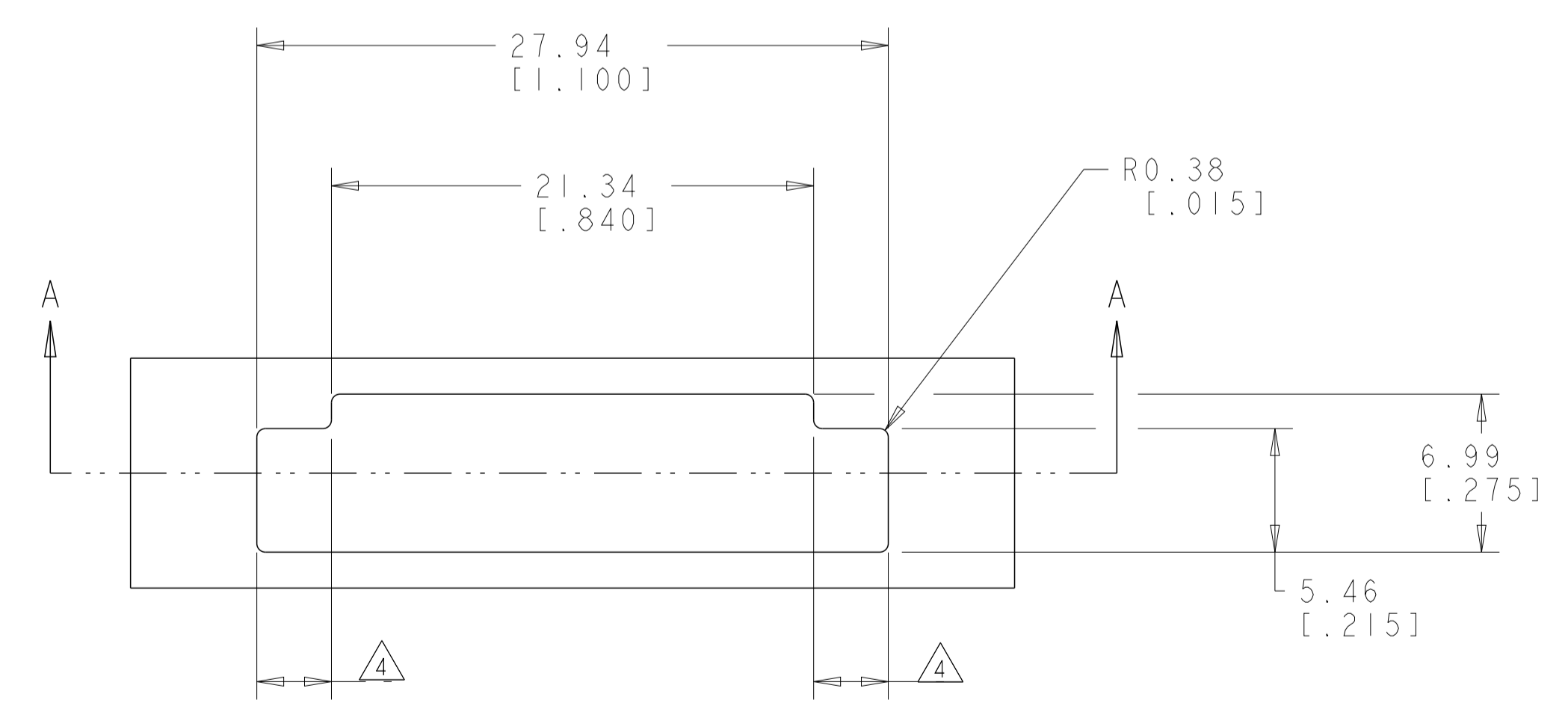


LOC	DIST	REVISIONS					
CM	00	P	LTN	DESCRIPTION	DATE	DWN	APVD
		R1		REVISED PER ECO-11-005294	06APR2011	RK	HMR
		R2		REVISED PER ECR-18-002474	20FEB2018	JB	DZ



1. THIS PLUG TO BE USED WITH CAP 480426.
2. TO BE USED WITH MATE-N-LOK SOCKETS.
3. RECOMMENDED PANEL THICKNESS 0.64 - 1.65 [.025 - .065].
4. DIMENSIONS TO BE EQUAL WITHIN 0.13 [.005].
5. THE PANEL MUST BE PUNCHED SO THAT THE HOUSING ENTERS THE PANEL IN THE SAME DIRECTION AS THE PUNCH.
6. BOTH LOCKING LEGS ARE TO BE SQUEEZED TOGETHER AND HOUSING INSERTED "STRAIGHT IN" AS OPPOSED TO A ROCKING MANNER OF INSERTION.
7. PANEL MUST NOT HAVE ANY MATERIAL (PAINT, PORCELAIN, ETC.) APPLIED IN THE MOUNTING HOLE AREA THAT WOULD DECREASE RETENTION OF THE HOUSING IN THE PANEL.
8. IF NOTES 5 AND 7 ARE NOT COMPLIED WITH THE 27.94 [1.100] DIMENSION SHOULD BE REDUCED TO 27.43 [1.080] TO ASSURE PROPER RETENTION IN THE PANEL.
9. DIMENSIONS IN BRACKETS ARE IN INCHES.)



NATURAL	HI-TEMP NYLON	3-480425-0
NATURAL	NYLON	1-480425-0
COLOR	MATERIAL	PART NUMBER

THIS DRAWING IS A CONTROLLED DOCUMENT.

DIMENSIONS: mm [INCHES]	TOLERANCES UNLESS OTHERWISE SPECIFIED:	DWN: K. WHITAKER 05-OCT-2001	CHK: D. COLEY 05-OCT-2001	APVD: D. COLEY 05-OCT-2001	NAME: PLUG, 4 CIRCUIT, PANEL MOUNT, MATE-N-LOK™
0 PLC ±	1 PLC ±	2 PLC ±	3 PLC ±	4 PLC ±	ANGLES ±
FINISH	±	±	±	±	±

MATERIAL: SEE TABLE

SCALE: 5:1 SHEET 1 OF 1 REV: R2

CUSTOMER DRAWING