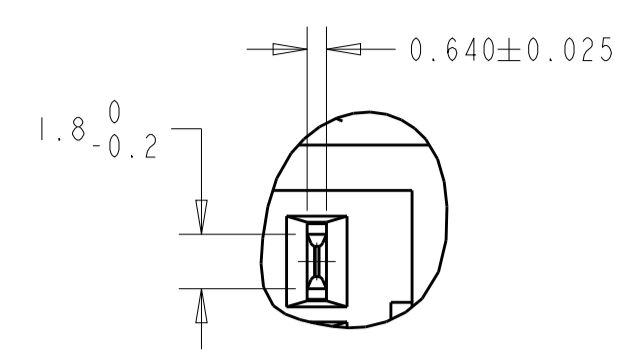
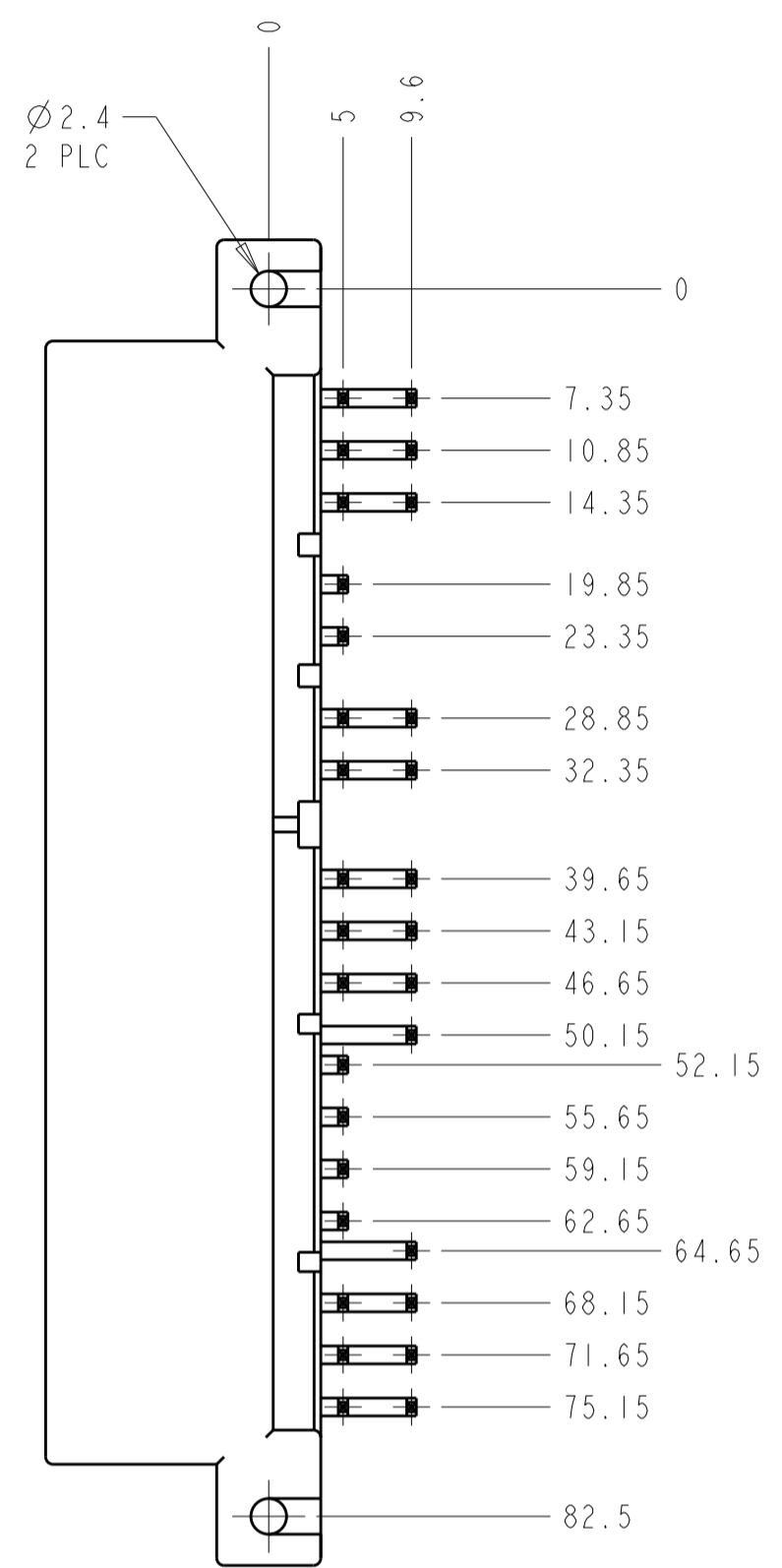
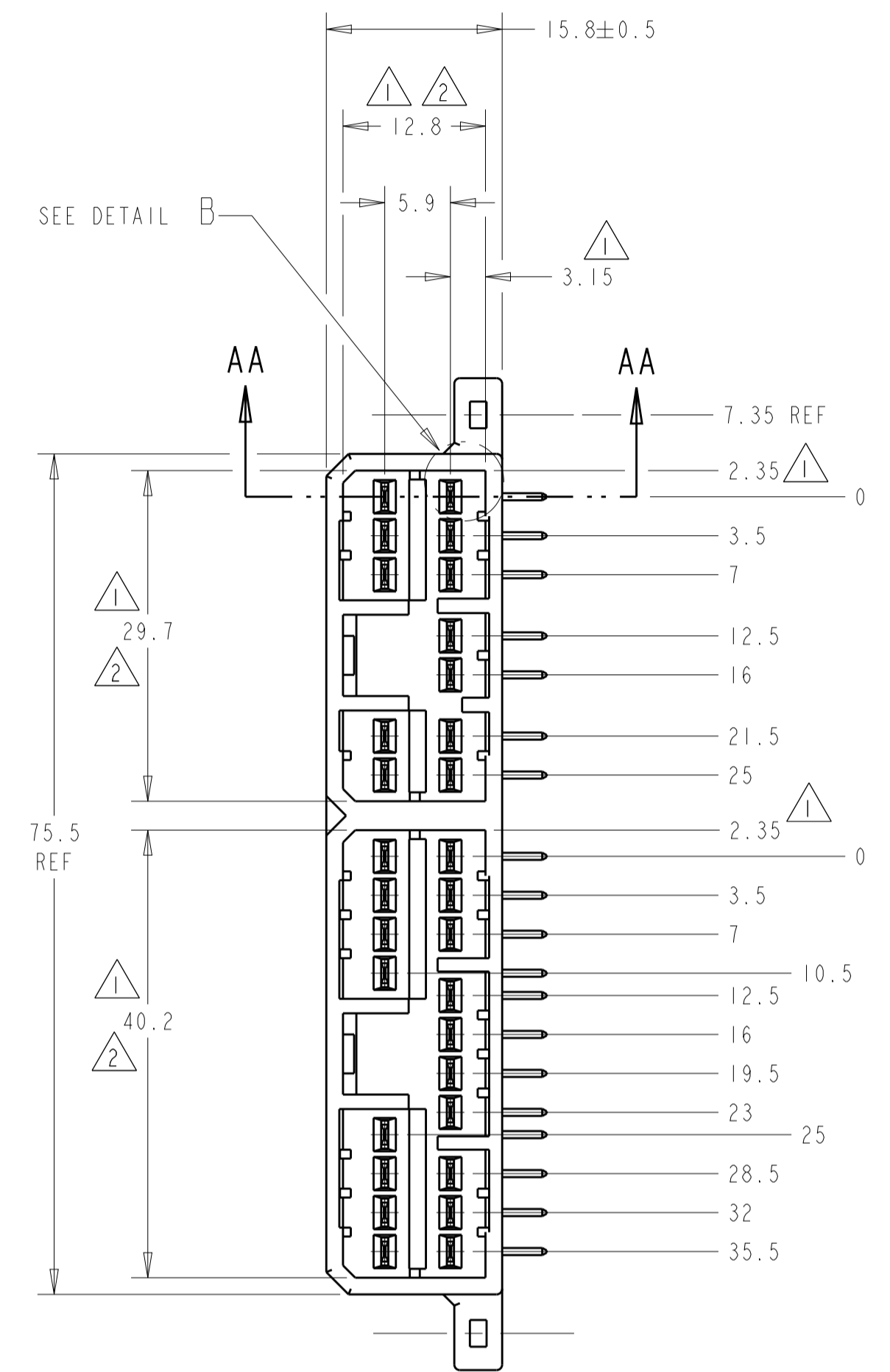
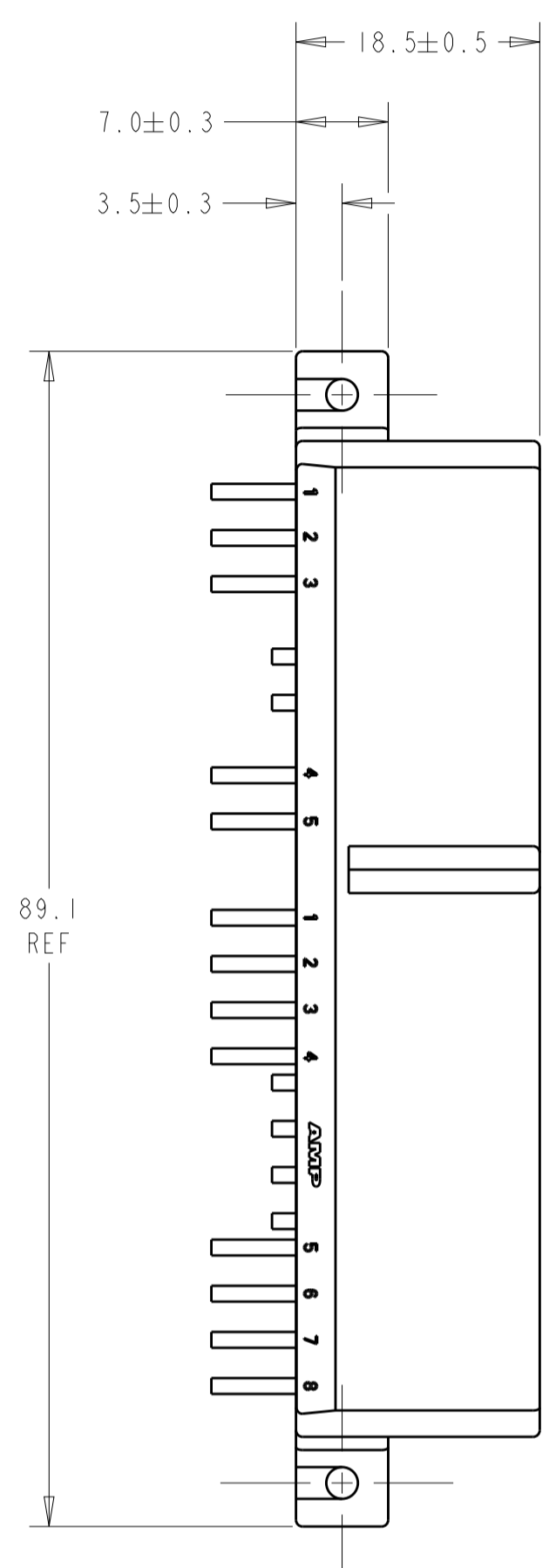


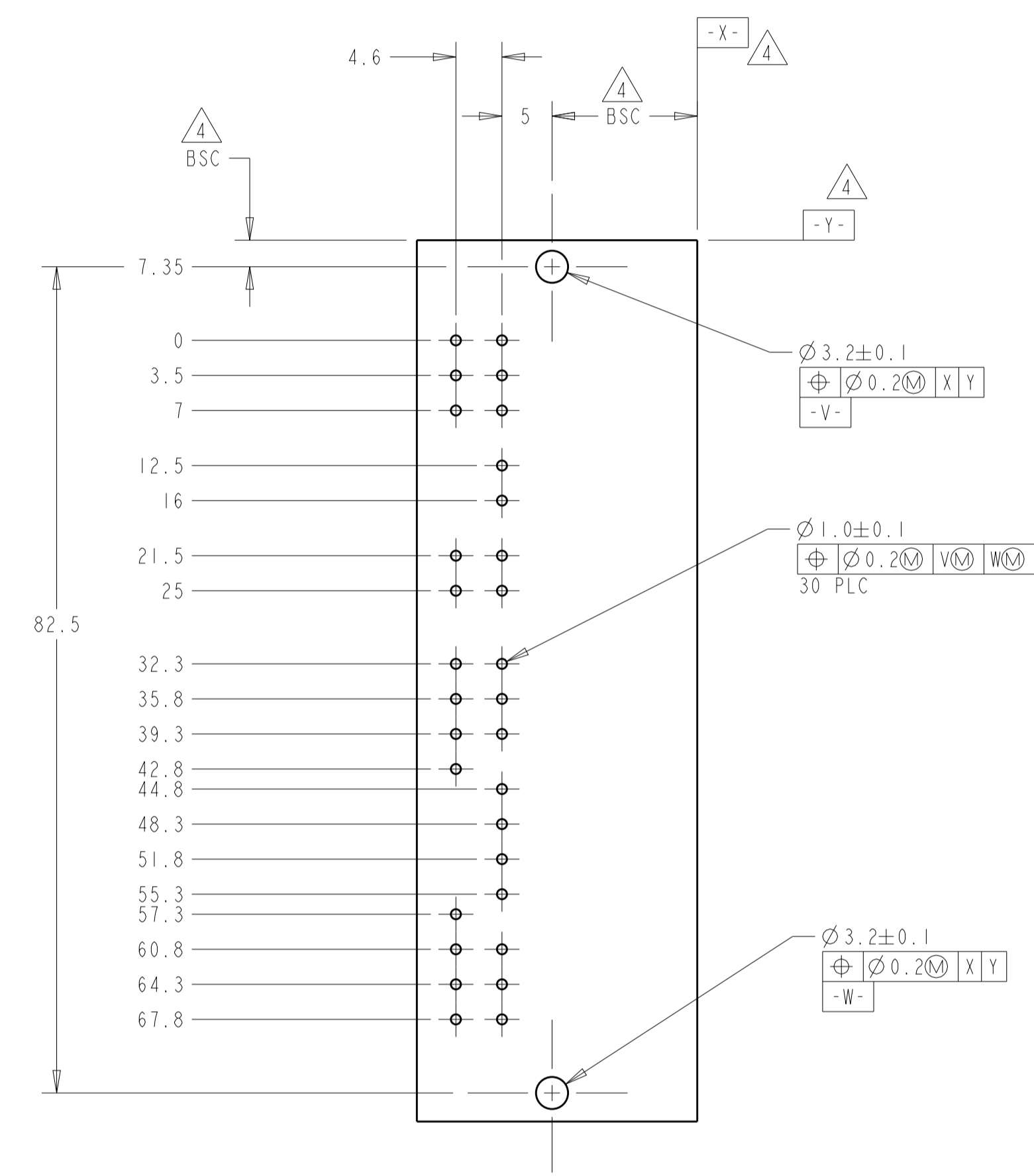
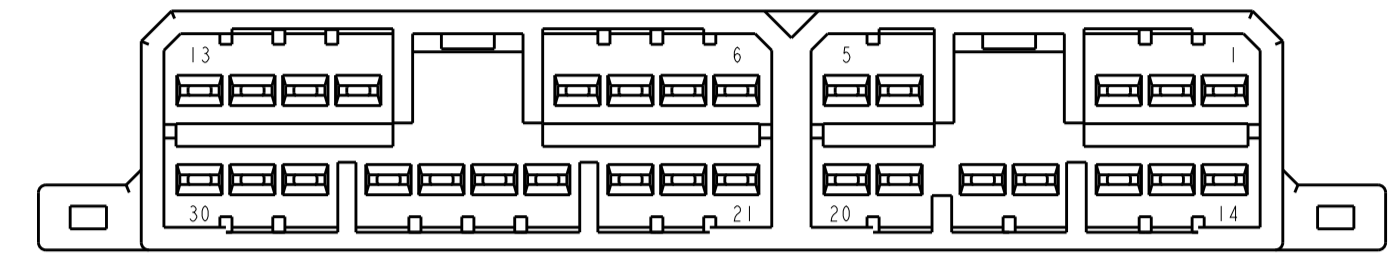
LOC	DIST	REVISIONS			
P	LTN	DESCRIPTION	DATE	DMN	APVD
A		REV PER EC OK80-0244-02	01NOV2002	RGV	SSA
A1		REV PER EC OK80-0139-03	19MAY2003	DJA	SSA
B		REVISED PER ECR-06-002241	01JUN2006	AH	SA
B1		REVISED PER ECO-19-002970	27FEB2019	JMS	KF



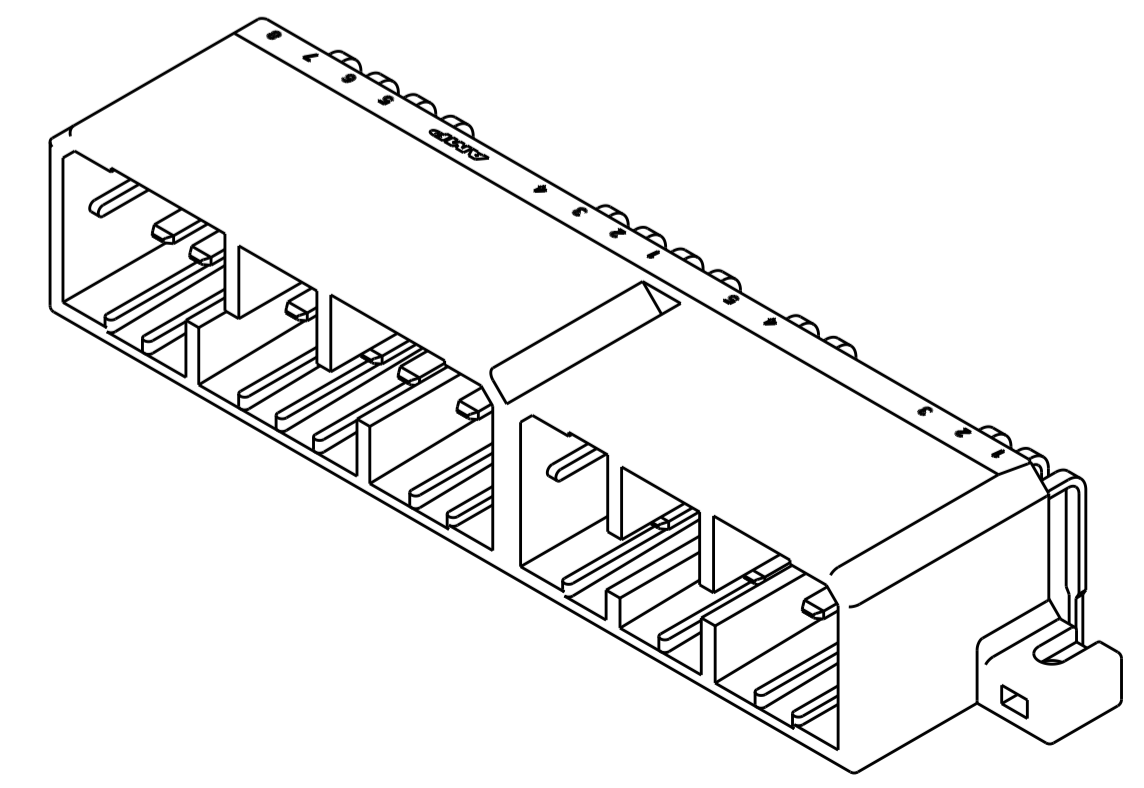
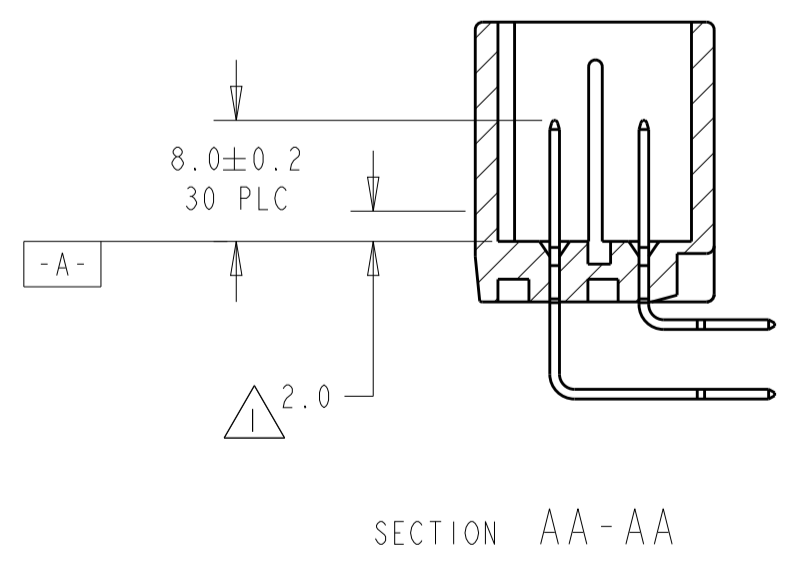
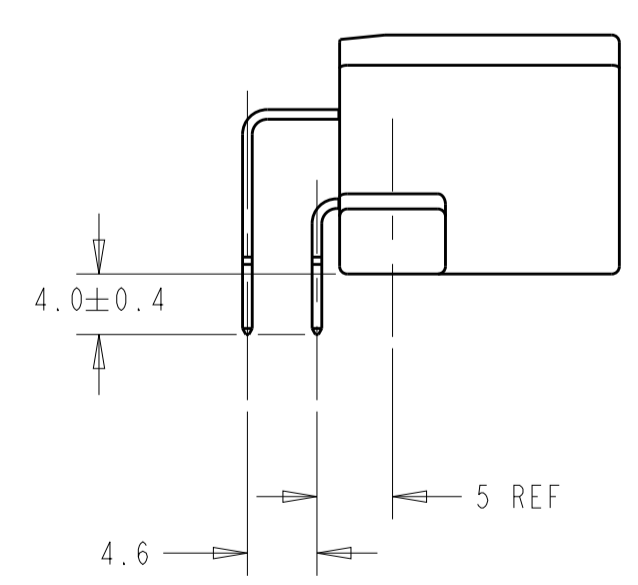
DETAIL B
SCALE 4:1



- 1. DIMENSION MUST BE HELD BETWEEN **-A-** AND 2.0mm FROM **-A-**.
- 2. TO MATE WITH PLUG HOUSING SMOOTHLY.
- 3. USE M3 TAPPING SCREW JIS B1115 OR 1122 (TYPE 2 OR 4) BEFORE SOLDER.
- 4. DATUMS AND BASIC DIMENSIONS ESTABLISHED BY CUSTOMER.
- 5. MATING PLUG PART NUMBERS ARE:
173853 (18 POSITION)
173851 (12 POSITION)
- 7. CIRCUIT NUMBERS:



P.C. BOARD LAYOUT
 RECOMMENDED BOARD THICKNESS 1.60±0.15mm
 TOLERANCES ±0.1



CONTACT NUMBER	MATERIAL	FINISH	MATERIAL	COLOR	PART NO
-	BRASS	POST TIN	PBT	GREEN	4-638977-2
-	BRASS	POST TIN	PBT	WHITE	4-638977-1
1 - 30	BRASS	GOLD	PBT	GREEN	2-638977-4
1 - 30	BRASS	GOLD	PBT	WHITE	2-638977-1
-	BRASS	PRE-TIN	PBT	GRAY	638977-6
-	BRASS	PRE-TIN	PBT	GREEN	638977-4
-	BRASS	PRE-TIN	PBT	WHITE	638977-1

SELECTIVE GOLD CONTACT NUMBER	MATERIAL	FINISH	MATERIAL	COLOR	PART NO
1	BRASS	PRE-TIN	PBT	GREEN	638977-4
2	BRASS	PRE-TIN	PBT	WHITE	638977-1

CONTACT	HOUSING	PART NO
1	HOUSING	4-638977-1

DIMENSIONS: mm TOLERANCES UNLESS OTHERWISE SPECIFIED: 0 PLC ±0.3 1 PLC ±0.3 2 PLC ±0.30 3 PLC ± 4 PLC ± ANGLES ±1° MATERIAL SEE TABLE FINISH SEE TABLE	DWN R. VESTAL 11JAN2001 CHK S. ASHLEY 11JAN2001 APVD S. ASHLEY 11JAN2001 PRODUCT SPEC APPLICATION SPEC WEIGHT CUSTOMER DRAWING	Tyco Electronics Harrisburg, PA 17105-3608 NAME 30 POSITION CAP HOUSING ASSEMBLY, .070 SERIES MULTILOCK I/O CONNECTOR SIZE CAGE CODE DRAWING NO. A1 00779 C=638977 SCALE 2:1 SHEET 1 OF 1 REV B1
---	--	--