

## NOTES:

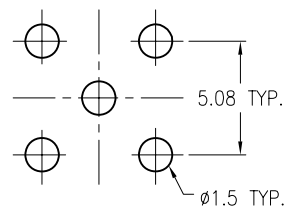
- MATERIALS AND FINISHES  
BODY - BRASS, GOLD OVER WHITE BRONZE PLATING  
CONTACT - BERYLLIUM COPPER, GOLD OVER WHITE BRONZE PLATING  
INSULATOR - PTFE
- ELECTRICAL:
  - IMPEDANCE: 50 OHM
  - FREQUENCY RANGE: DC - 6 GHz
  - VSWR(RETURN LOSS): 1.05 (32 dB) TO 3 GHz  
1.10 (26 dB) TO 6 GHz
  - DIELECTRIC WITHSTANDING VOLTAGE: 1000 VRMS, MIN.
- MECHANICAL:
  - DURABILITY: 500 CYCLES MIN.
  - TEMPERATURE RANGE: -65° C TO 165° C

THIRD ANGLE PROJ.

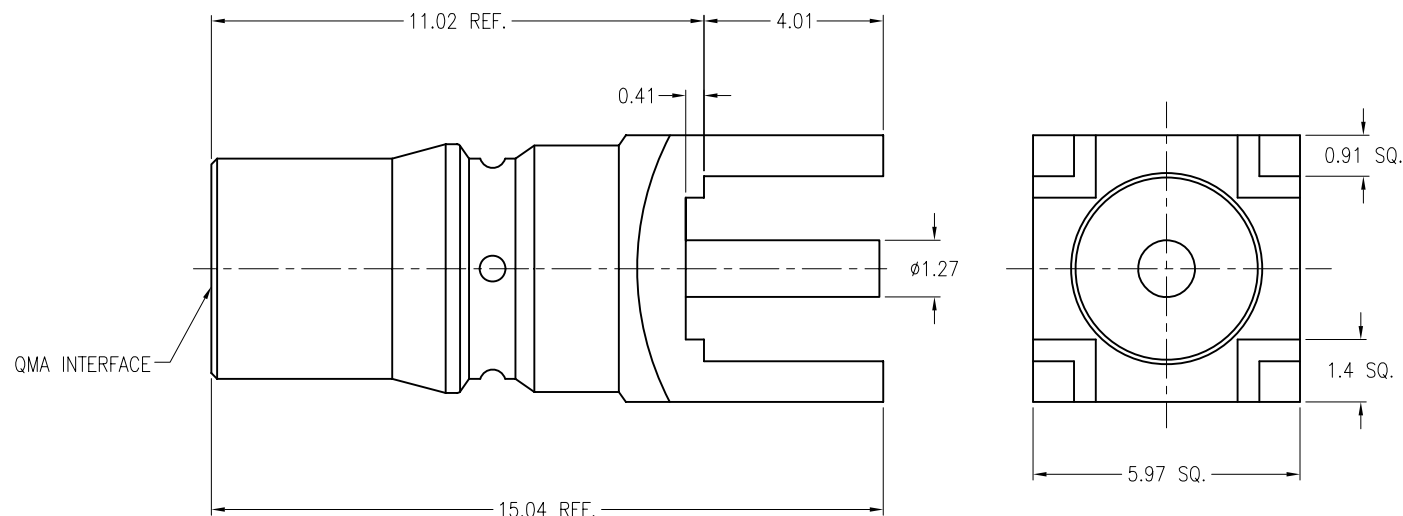


## REVISIONS

REV	DESCRIPTION	DATE	ECO	APPR
A	RELEASE TO MFG.			
A1	SEE SHEET 1 \ RD-DM06110101K	01-11-06'		
B	SEE SHEET 1 \ RD-DM06110101K	11-10-06'		KL
C	SEE SHEET 1 \ RD-DM07122401K	12-31-07'		KL
D	SEE SHEET 1 \ RD-DM09071601K	10-Aug-09	47656	SH



PCB MOUNTING HOLE



## CUSTOMER OUTLINE DRAWING

ALL OTHER SHEETS ARE FOR INTERNAL USE ONLY

UNLESS OTHERWISE SPECIFIED, DIMENSIONS ARE IN METRIC AND TOLERANCES ARE:  
0.5 - 6mm ±0.1mm    6 - 30mm ±0.2mm    30 - 120mm ±0.3mm    ANGLES ±1°

NOTICE - These drawings, specifications, or other data (1) are, and remain the property of Amphenol Corp. (2) must be returned upon request; and (3) are confidential and not to be disclosed to any person other than those to whom they are given by Amphenol Corp. The furnishing of these drawings, specifications, or other data by Amphenol Corp., or to any other person to anyone for any purpose is not to be regarded by implication or otherwise in any manner licensing, granting rights or permitting such holder or any other person to manufacture, use or sell any product, process or design, patented or otherwise, that may in any way be related to or disclosed by said drawings, specifications, or other data.

MATERIAL

REFERENCE

FINISH

DRAWN

K.LI

DATE

21-Jul-09

ENGINEER

C.WANG

DATE

12-31-07'

APPROVED

S.HSIEH

DATE

21-Jul-09

CAD FILE

F:\CNPD\930\116J\51P-DSZ

TITLE

QMA (F) STR TO PCB

SCALE: 6/1

DWG SIZE

B

SHEET

2 OF 2

CODE ID

74868

REV

D

Amphenol RF  
Danbury CT USA, Tainan Taiwan, Shenzhen China  
www.amphenolrf.com

DRAWING NO. 930-116J-51P

ITEM NO. 930-116J-51P

PART NO. 930-116J-51P