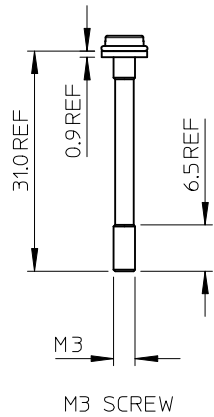
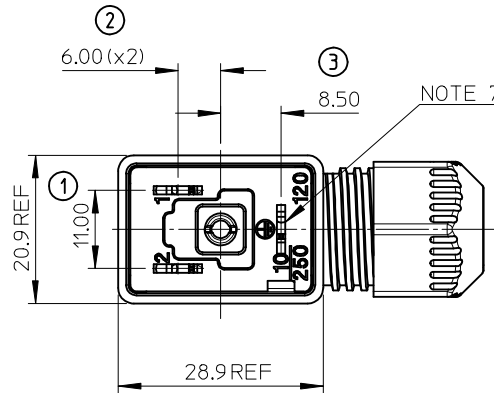
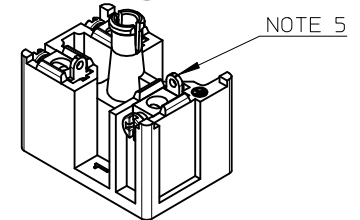
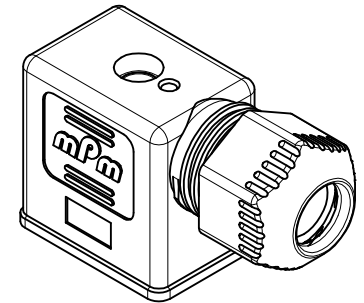
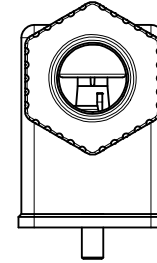
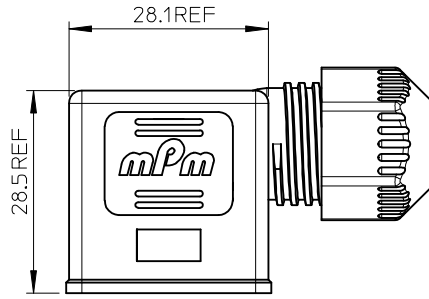


7 6 5 4 3 2 1



M3
M3 SCREW

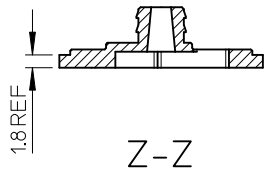
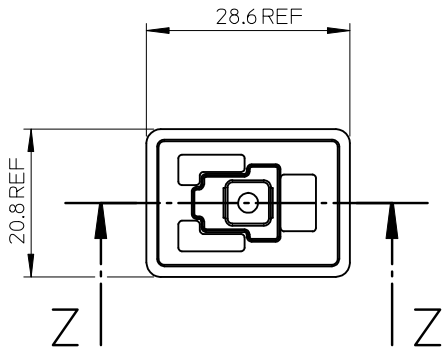


NOTES:

1. PRODUCT SPEC: PS-121201-001
2. PACKAGING SPEC: PK-121201-001
3. MATERIAL:
COVER HOUSING: PA TRANSPARENT
NUT: PA BLACK
INSERT: PA BLACK
4. ENGINEERING NO: C22200T6RSNCM
5. SOLDER TAILS
6. PART IS BULK PACK MOUNTED - 100 PIECES PER BOX
7. EARTH POSITION: H6
8. CABLE DIAMETER: 4-9mm
9. NOMINAL VOLTAGE: 250V AC / 300V DC
10. NOMINAL CURRENT: 10A
11. MAXIMUM CURRENT: 16A
12. CROSS SECTIONAL AREA OF WIRE CONDUCTOR: 1.5mm² MAX, 0.75mm² MIN
13. PROTECTION CLASS: IP67
14. OPERATING TEMPERATURE RANGE: -40°C TO +90°C
15. GLAND NUT TIGHTENING TORQUE: REFER TO PRODUCT SPECIFICATION
16. FIXING SCREW TIGHTENING TORQUE: 0.4Nm

LAST INSPECTION NUMBER USED: 3

NBR GASKET - BLACK



ORIGINAL RELEASE EC NO: IPG2014-1501 DRWN:DSHEA 2014/02/21 CHKD:SMCGREEVY 2014/02/25 APPR:STGRIFFIN 2014/03/06	DESCRIPTION REV	QUALITY SYMBOLS	GENERAL TOLERANCES (UNLESS SPECIFIED)		DIMENSION STYLE MM ONLY		SCALE 1:1	DESIGN UNITS METRIC	THIRD ANGLE PROJECTION	
		▼=0 ▽=0	mm	INCH	DRAWN BY DSHEA	DATE 2014/02/21	TITLE C222 TYPE B IND TRANSP, EXT THREAD WITH SOLDER TAILS molex			
		4 PLACES ± --- ± --- 3 PLACES ± --- ± --- 2 PLACES ± 0.10 ± --- 1 PLACE ± 0.20 ± --- 0 PLACE ± --- ± ---	ANGULAR ± 2 °		CHECKED BY SMCGREEVY	DATE 2014/02/25				
		DRAFT WHERE APPLICABLE MUST REMAIN WITHIN DIMENSIONS		MATERIAL NO. 1212020020		DOCUMENT NO. SD-121202-020		SHEET NO. 1 OF 1		