



# AK4121

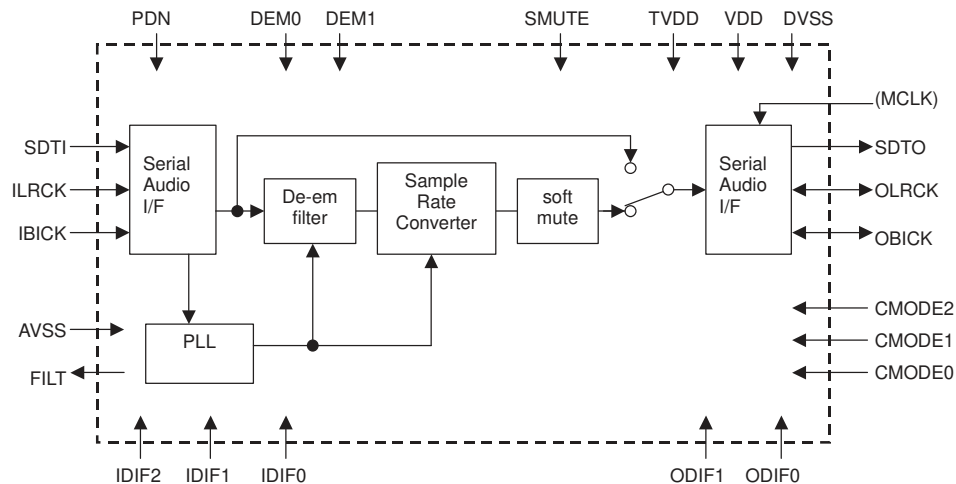
## Asynchronous Sample Rate Converter

**GENERAL DESCRIPTION**

AK4121 is a stereo asynchronous sample rate converter. The input sample rate ranges from 8kHz to 96kHz. The output sample rate is 32kHz, 44.1kHz, 48kHz or 96kHz. Using the AK4121 simplifies system design, since the AK4121's internal PLL eliminates the need for a master clock in slave mode. Then the AK4121 is suitable for applications requiring multiple sample rates, such as Car Audio, DVD recorders, and digital audio recording.

**FEATURES**

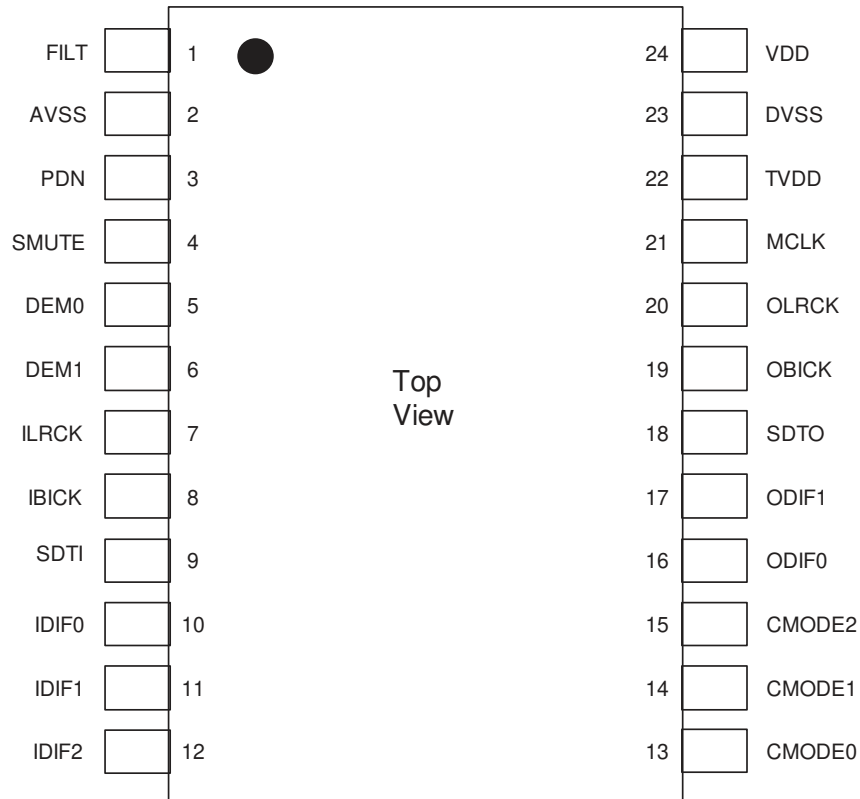
- Stereo asynchronous sample rate converter
- Input sample rate range (FSI): 8kHz to 96kHz
- Output sample rate (FSO): 32kHz/44.1kHz/48kHz/96kHz
- Input to output Sample rate ratio: FSO/FSI = 0.33 to 6
- THD+N: -113dB
- I/F format: MSB justified, LSB justified (24/20/16bit) and I<sup>2</sup>S
- Clock for Master mode: 256/384/512/768fso
- De-emphasis filter: 32kHz/44.1kHz/48kHz
- SRC Bypass mode
- Soft Mute function
- Power Supply: VDD: 3.0 to 3.6V, TVDD: 3.0 to 5.5V (for input tolerant)
- Ta: -40 to +85°C



■ Ordering Guide

AK4121VF                    -40 ~ +85°C                    24pin VSOP (0.65mm pitch)  
 AKD4121                    Evaluation Board for AK4121

■ Pin Layout



■ Major Difference between AK4120 and AK4121

| Items                   | AK4120                      | AK4121                                                                           |
|-------------------------|-----------------------------|----------------------------------------------------------------------------------|
| MCLK Input              | Needed (supports 256/512fs) | NOT Needed (Slave mode) /<br>Needed (Master Mode:<br>supports 256/384/512/768fs) |
| Input sample rate (max) | 48kHz                       | 96kHz                                                                            |
| Vdd                     | 2.7V ~ 3.6V                 | 3.0V ~ 3.6V                                                                      |
| Input 5V Tolerant       | X                           | O                                                                                |
| De-emphasis Filter      | X                           | O                                                                                |
| Soft Mute               | X                           | O                                                                                |
| Digital Volume          | O                           | X                                                                                |
| Digital Mixer           | O                           | X                                                                                |

|                     |
|---------------------|
| <b>PIN/FUNCTION</b> |
|---------------------|

| No. | Pin Name | I/O | Function                                                          |
|-----|----------|-----|-------------------------------------------------------------------|
| 1   | FILT     | O   | Loop-Filter Pin for PLL                                           |
| 2   | AVSS     | I   | Analog Ground Pin                                                 |
| 3   | PDN      | I   | Power-Down pin<br>When "L", the AK4121 is powered-down and reset. |
| 4   | SMUTE    | I   | Soft Mute Pin                                                     |
| 5   | DEM0     | I   | De-emphasis Filter Control Pin #0                                 |
| 6   | DEM1     | I   | De-emphasis Filter Control Pin #1                                 |
| 7   | ILRCK    | I   | L/R Clock Pin for Input                                           |
| 8   | IBICK    | I   | Audio Serial Data Clock Pin for Input                             |
| 9   | SDTI     | I   | Audio Serial Data Input Pin                                       |
| 10  | IDIF0    | I   | Input Data Format pin #0                                          |
| 11  | IDIF1    | I   | Input Data Format pin #1                                          |
| 12  | IDIF2    | I   | Input Data Format pin #2                                          |
| 13  | CMODE0   | I   | Clock Mode Select Pin #0                                          |
| 14  | CMODE1   | I   | Clock Mode Select Pin #1                                          |
| 15  | CMODE2   | I   | Clock Mode Select Pin #2                                          |
| 16  | ODIF0    | I   | Output Data Format pin #0                                         |
| 17  | ODIF1    | I   | Output Data Format pin #1                                         |
| 18  | SDTO     | O   | Audio Serial Data Output Pin                                      |
| 19  | OBICK    | I/O | Audio Serial Data Clock Pin for Output                            |
| 20  | OLRCK    | I/O | L/R Clock Pin for Output                                          |
| 21  | MCLK     | I   | Master Clock Pin for Output                                       |
| 22  | TVDD     | I   | Input Buffer Power Supply Pin, 3.3V or 5V                         |
| 23  | DVSS     | I   | Digital Ground Pin                                                |
| 24  | VDD      | I   | Power Supply Pin, 3.3V                                            |

|                                 |
|---------------------------------|
| <b>ABSOLUTE MAXIMUM RATINGS</b> |
|---------------------------------|

(AVSS=DVSS=0V; Note 1)

| Parameter                              | Symbol       | min  | max      | Units |
|----------------------------------------|--------------|------|----------|-------|
| Power Supplies:                        |              |      |          |       |
| Core                                   | VDD          | -0.3 | 4.6      | V     |
| Input Buffer                           | TVDD         | -0.3 | 6.0      | V     |
| AVSS-DVSS  (Note 1)                    | $\Delta$ GND |      | 0.3      | V     |
| Input Current, Any Pin Except Supplies | IIN          | -    | $\pm$ 10 | mA    |
| Input Voltage                          | VIN          | -0.3 | TVDD+0.3 | V     |
| Ambient Temperature (Power applied)    | Ta           | -40  | 85       | °C    |
| Storage Temperature                    | Tstg         | -65  | 150      | °C    |

Note 1. All voltages with respect to ground.

WARNING: Operation at or beyond these limits may result in permanent damage to the device.

Normal operation is not guaranteed at these extremes.

|                                         |
|-----------------------------------------|
| <b>RECOMMENDED OPERATING CONDITIONS</b> |
|-----------------------------------------|

(AVSS=DVSS=0V; Note 2)

| Parameter            | Symbol | min | typ | max | Units |
|----------------------|--------|-----|-----|-----|-------|
| Power Supplies: Core | VDD    | 3.0 | 3.3 | 3.6 | V     |
| Input Buffer         | TVDD   | VDD | 5   | 5.5 | V     |

Note 2. All voltages with respect to ground.

|                        |
|------------------------|
| <b>SRC PERFORMANCE</b> |
|------------------------|

(Ta=-40~85°C; VDD=3.0~3.6V; TVDD=3.0~5.5V; data=20bit; measurement bandwidth=20Hz~FSO/2; unless otherwise specified.)

| Parameter                                                            | Symbol  | min  | typ  | max  | Units |
|----------------------------------------------------------------------|---------|------|------|------|-------|
| Resolution                                                           |         |      |      | 20   | Bits  |
| Input Sample Rate                                                    | FSI     | 8    |      | 96   | kHz   |
| Output Sample Rate                                                   | FSO     | 32   |      | 96   | kHz   |
| Dynamic Range (Input= 1kHz, -60dBFS, Note 3)                         |         |      |      |      |       |
| FSO/FSI=44.1kHz/48kHz                                                |         | -    | 114  | -    | dB    |
| FSO/FSI=48kHz/44.1kHz                                                |         | -    | 114  | -    | dB    |
| FSO/FSI=32kHz/48kHz                                                  |         | -    | 114  | -    | dB    |
| FSO/FSI=96kHz/32kHz                                                  |         | -    | 115  | -    | dB    |
| Worst Case (FSO/FSI=32kHz/44.1kHz)                                   |         | 112  | -    | -    | dB    |
| Dynamic Range (Input= 1kHz, -60dBFS, A-weighted, Note 3)             |         |      |      |      |       |
| FSO/FSI=44.1kHz/48kHz                                                |         | -    | 117  | -    | dB    |
| THD+N (Input= 1kHz, 0dBFS, Note 3)                                   |         |      |      |      |       |
| FSO/FSI=44.1kHz/48kHz                                                |         | -    | -113 | -    | dB    |
| FSO/FSI=48kHz/44.1kHz                                                |         | -    | -112 | -    | dB    |
| FSO/FSI=32kHz/48kHz                                                  |         | -    | -113 | -    | dB    |
| FSO/FSI=96kHz/32kHz                                                  |         | -    | -111 | -    | dB    |
| Worst Case (FSO/FSI=48kHz/8kHz)                                      |         | -    | -    | -103 | dB    |
| Ratio between Input and Output Sample Rate (FSO/FSI, Note 4, Note 5) | FSO/FSI | 0.33 |      | 6    | -     |

Note 3. Measured by Rohde &amp; Schwarz UPD04, Rejection Filter= wide, 8192point FFT.

Note 4. The "0.33" is the ratio of FSO/FSI when FSI is 96kHz and FSO is 32kHz

Note 5. The "6" is the ratio when FSI is 8kHz and FSO is 48kHz.

| DIGITAL FILTER                             |                                        |     |           |       |           |      |
|--------------------------------------------|----------------------------------------|-----|-----------|-------|-----------|------|
| (Ta=-40~85°C; VDD=3.0~3.6V; TVDD=3.0~5.5V) |                                        |     |           |       |           |      |
| Parameter                                  | Symbol                                 | min | typ       | max   | Units     |      |
| <b>Digital Filter</b>                      |                                        |     |           |       |           |      |
| Passband -0.001dB                          | $0.985 \leq \text{FSO/FSI} \leq 6.000$ | PB  | 0         |       | 0.4583FSI | kHz  |
|                                            | $0.905 \leq \text{FSO/FSI} < 0.985$    | PB  | 0         |       | 0.4167FSI | kHz  |
|                                            | $0.714 \leq \text{FSO/FSI} < 0.905$    | PB  | 0         |       | 0.3195FSI | kHz  |
|                                            | $0.656 \leq \text{FSO/FSI} < 0.714$    | PB  | 0         |       | 0.2852FSI | kHz  |
|                                            | $0.536 \leq \text{FSO/FSI} < 0.656$    | PB  | 0         |       | 0.2245FSI | kHz  |
|                                            | $0.492 \leq \text{FSO/FSI} < 0.536$    | PB  | 0         |       | 0.2003FSI | kHz  |
|                                            | $0.452 \leq \text{FSO/FSI} < 0.492$    | PB  | 0         |       | 0.1781FSI | kHz  |
|                                            | $0.333 \leq \text{FSO/FSI} < 0.452$    | PB  | 0         |       | 0.1092FSI | kHz  |
| Stopband                                   | $0.985 \leq \text{FSO/FSI} \leq 6.000$ | SB  | 0.5417FSI |       |           | kHz  |
|                                            | $0.905 \leq \text{FSO/FSI} < 0.985$    | SB  | 0.5021FSI |       |           | kHz  |
|                                            | $0.714 \leq \text{FSO/FSI} < 0.905$    | SB  | 0.3965FSI |       |           | kHz  |
|                                            | $0.656 \leq \text{FSO/FSI} < 0.714$    | SB  | 0.3643FSI |       |           | kHz  |
|                                            | $0.536 \leq \text{FSO/FSI} < 0.656$    | SB  | 0.2974FSI |       |           | kHz  |
|                                            | $0.492 \leq \text{FSO/FSI} < 0.536$    | SB  | 0.2732FSI |       |           | kHz  |
|                                            | $0.452 \leq \text{FSO/FSI} < 0.492$    | SB  | 0.2510FSI |       |           | kHz  |
|                                            | $0.333 \leq \text{FSO/FSI} < 0.452$    | SB  | 0.1822FSI |       |           | kHz  |
| Passband Ripple                            | PR                                     |     |           | ±0.01 |           | dB   |
| Stopband Attenuation                       | SA                                     | 96  |           |       |           | dB   |
| Group Delay (Note 6)                       | GD                                     | -   | 57.5      | -     |           | 1/fs |

Note 6. This value is the time from the rising edge of LRCK after data is input to rising edge of LRCK after data is output, when LRCK for Output data corresponds with LRCK for Input.(at 20bit MSB justified, 16bit and 20bit LSB justified)

| DC CHARACTERISTICS                         |        |         |     |         |       |
|--------------------------------------------|--------|---------|-----|---------|-------|
| (Ta=-40~85°C; VDD=3.0~3.6V; TVDD=3.0~5.5V) |        |         |     |         |       |
| Parameter                                  | Symbol | min     | typ | max     | Units |
| Power Supply Current                       |        |         |     |         |       |
| Normal operation:                          |        |         |     |         |       |
| FSI=FSO=48kHz at Slave Mode: VDD=3.3V      |        |         | 10  | -       | mA    |
| FSI=FSO=96kHz at Master Mode: VDD=3.3V     |        |         | 20  | -       | mA    |
| : VDD=3.6V                                 |        |         |     | 40      | mA    |
| Power down: PDN = "L" (Note 7)             |        |         | 10  | 100     | μA    |
| High-Level Input Voltage                   | VIH    | 0.7xVDD | -   | -       | V     |
| Low-Level Input Voltage                    | VIL    | -       | -   | 0.3xVDD | V     |
| High-Level Output Voltage (Iout=-400μA)    | VOH    | VDD-0.4 | -   | -       | V     |
| Low-Level Output Voltage (Iout=400μA)      | VOL    | -       | -   | 0.4     | V     |
| Input Leakage Current                      | Iin    | -       | -   | ± 10    | μA    |

Note 7. All digital inputs including clock pins are held VSS.

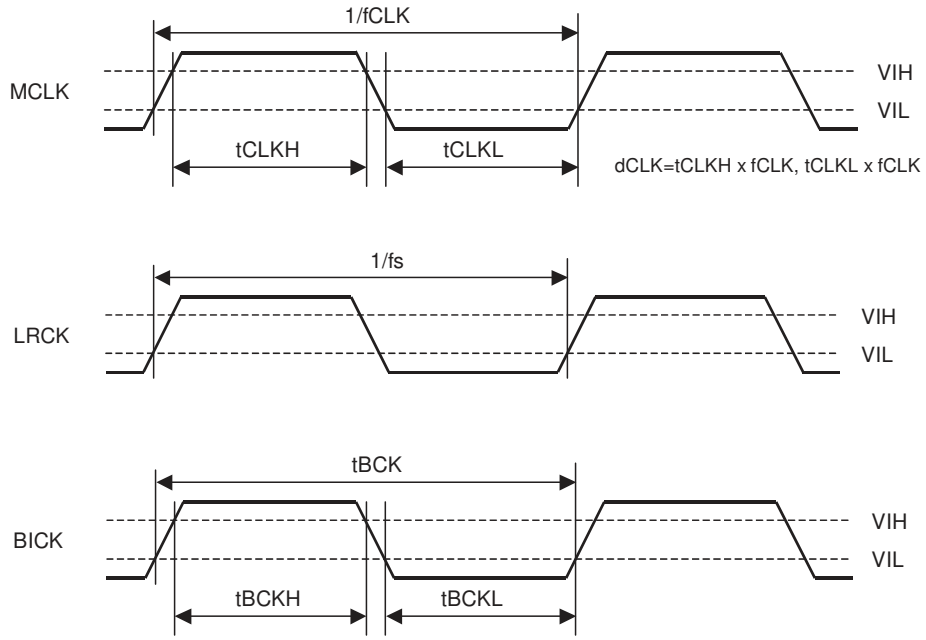
| SWITCHING CHARACTERISTICS                           |        |        |      |        |       |
|-----------------------------------------------------|--------|--------|------|--------|-------|
| (Ta=-40~85°C; VDD=3.0~3.6V; TVDD=3.0~5.5V; CL=20pF) |        |        |      |        |       |
| Parameter                                           | Symbol | min    | typ  | max    | Units |
| <b>Master Clock Input (MCLK)</b>                    |        |        |      |        |       |
| Frequency                                           | fCLK   | 8.192  | -    | 36.864 | MHz   |
| Duty Cycle                                          | dCLK   | 40     | -    | 60     | %     |
| <b>L/R clock for Input data (ILRCK)</b>             |        |        |      |        |       |
| Frequency                                           | fs     | 8      |      | 96     | kHz   |
| Duty Cycle                                          | Duty   | 48     | 50   | 52     | %     |
| <b>L/R clock for Output data (OLRCK)</b>            |        |        |      |        |       |
| Frequency (Note 9)                                  | fs     | 32     |      | 96     | kHz   |
| Duty Cycle Slave Mode                               | Duty   | 48     | 50   | 52     | %     |
| Duty Cycle Master Mode                              | Duty   |        | 50   |        | %     |
| <b>Audio Interface Timing</b>                       |        |        |      |        |       |
| <b>Input</b>                                        |        |        |      |        |       |
| IBICK Period                                        | tBCK   | 1/64fs |      |        | ns    |
| IBICK Pulse Width Low                               | tBCKL  | 65     |      |        | ns    |
| IBICK Pulse Width High                              | tBCKH  | 65     |      |        | ns    |
| ILRCK Edge to IBICK “↑” (Note 9)                    | tBLR   | 30     |      |        | ns    |
| BICK “↑” to ILRCK Edge (Note 9)                     | tLRB   | 30     |      |        | ns    |
| SDTI Hold Time from IBICK “↑”                       | tSDH   | 30     |      |        | ns    |
| SDTI Setup Time to IBICK “↑”                        | tSDS   | 30     |      |        | ns    |
| <b>Output (Slave Mode)</b>                          |        |        |      |        |       |
| OBICK Period                                        | tBCK   | 1/64fs |      |        | ns    |
| OBICK Pulse Width Low                               | tBCKL  | 65     |      |        | ns    |
| OBICK Pulse Width High                              | tBCKH  | 65     |      |        | ns    |
| OLRCK Edge to OBICK “↑” (Note 9)                    | tBLR   | 30     |      |        | ns    |
| OBICK “↑” to OLRCK Edge (Note 9)                    | tLRB   | 30     |      |        | ns    |
| OLRCK to SDTO (MSB)                                 | tLRS   |        |      | 30     | ns    |
| OBICK “↓” to SDTO                                   | tBSD   |        |      | 30     | ns    |
| <b>Output (Master Mode)</b>                         |        |        |      |        |       |
| BICK Frequency                                      | fBCK   |        | 64fs |        | Hz    |
| BICK Duty                                           | dBCK   |        | 50   |        | %     |
| BICK “↓” to LRCK                                    | tMBLR  | -20    |      | 20     | ns    |
| BICK “↓” to SDTO                                    | tBSD   | -20    |      | 30     | ns    |
| <b>Power-down &amp; Reset Timing</b>                |        |        |      |        |       |
| PDN Pulse Width (Note 10)                           | tPD    | 150    |      |        | ns    |

Note 8. Min is 8kHz when BYPASS=“H”.

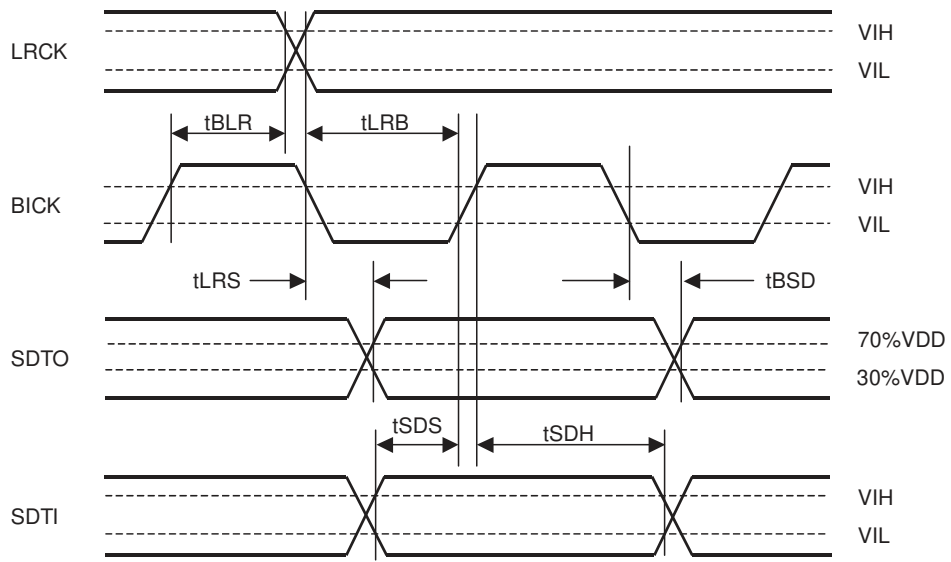
Note 9. BICK rising edge must not occur at the same time as LRCK edge.

Note 10. The AK4121 must be reset by bringing PDN “L” to “H” upon power-up.

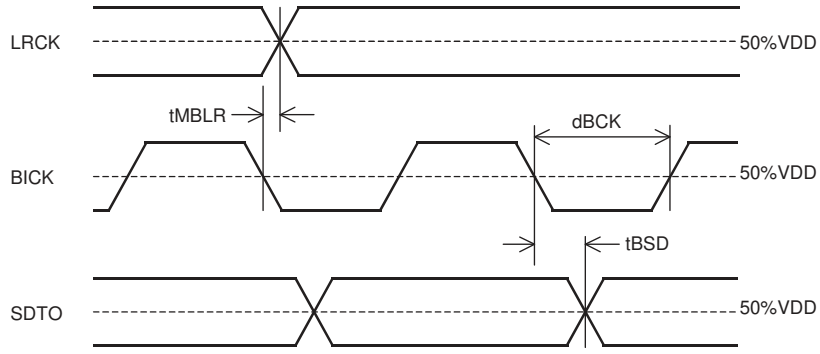
■ Timing Diagram



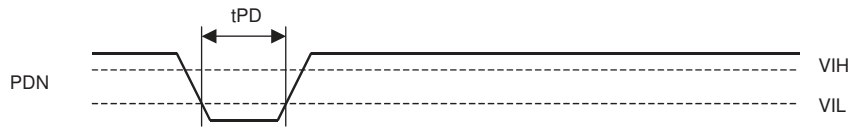
Clock Timing



Audio Interface Timing at Slave Mode



Audio Interface Timing at Master Mode



Power-down & Reset Timing

Note: BICK means IBICK and OBICK.  
LRCK means ILRCK and OLRCK.



|                           |
|---------------------------|
| <b>OPERATION OVERVIEW</b> |
|---------------------------|

### ■ System Clock

The input port works in slave mode only. The output port works in slave or master mode. An internal system clock is created by the internal PLL using ILRCK. The MCLK is not needed when the output port is in slave mode, and in slave mode set the MCLK pin to DVSS. The CMODE2-0 pins select the master/slave and bypass mode. The CMODE2-0 pins should be controlled when pin PDN="L".

| Mode | CMODE2 | CMODE1 | CMODE0 | MCLK                  | Master/Slave (Output Port) |
|------|--------|--------|--------|-----------------------|----------------------------|
| 0    | L      | L      | L      | 256fso (fso~96kHz)    | Master                     |
| 1    | L      | L      | H      | 384fso (fso~96kHz)    | Master                     |
| 2    | L      | H      | L      | 512fso (fso~48kHz)    | Master                     |
| 3    | L      | H      | H      | 768fso (fso~48kHz)    | Master                     |
| 4    | H      | L      | L      | Not used. Set to DVSS | Slave                      |
| 5    | H      | L      | H      | -                     | (Reserved)                 |
| 6    | H      | H      | L      | -                     | (Reserved)                 |
| 7    | H      | H      | H      | Not used. Set to DVSS | Master (BYPASS mode)       |

Table 1. Master/Slave control

### ■ Audio Interface Format

The IDIF2-0 pins select the data mode for the input port. The ODIF1-0 pins select the data mode for the output port. In all modes the audio data is MSB-first, 2's compliment format. The SDTO is clocked out on the falling edge of OBICK. Select these modes when PDN="L". When in BYPASS mode, both IBICK and OBICK are fixed to 64fs.

| Mode | IDIF2 | IDIF1 | IDIF0 | SDTI Format                          | IBICK (Slave) |
|------|-------|-------|-------|--------------------------------------|---------------|
| 0    | L     | L     | L     | 16bit LSB Justified                  | ≥32fs         |
| 1    | L     | L     | H     | 20bit LSB Justified                  | ≥40fs         |
| 2    | L     | H     | L     | 20bit MSB Justified                  | ≥40fs         |
| 3    | L     | H     | H     | 20/16bit I <sup>2</sup> S Compatible | ≥40fs or 32fs |
| 4    | H     | L     | L     | 24bit LSB Justified                  | ≥48fs         |

Table 2. Input Audio Data Formats

| Mode | ODIF1 | ODIF0 | SDTO Format                          | OBICK (Slave) | OBICK (Master) |
|------|-------|-------|--------------------------------------|---------------|----------------|
| 0    | L     | L     | 16bit LSB Justified                  | 64fs          | 64fs           |
| 1    | L     | H     | 20bit LSB Justified                  | 64fs          | 64fs           |
| 2    | H     | L     | 20/16bit MSB Justified               | ≥40fs or 32fs | 64fs           |
| 3    | H     | H     | 20/16bit I <sup>2</sup> S Compatible | ≥40fs or 32fs | 64fs           |

Table 3. Output Audio Data Formats

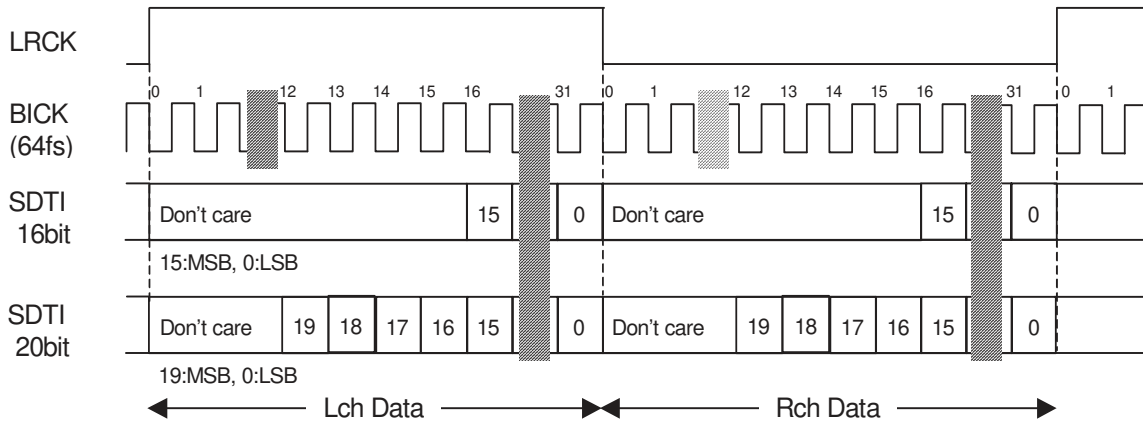


Figure 1. LSB justified Timing

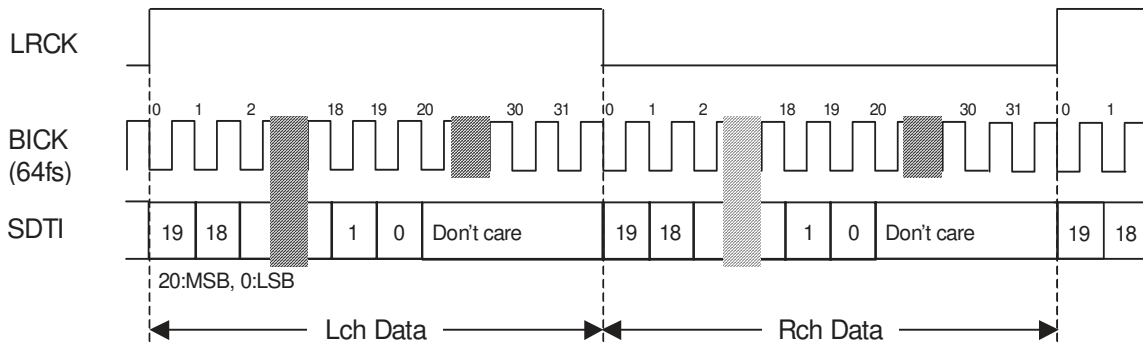


Figure 2. MSB justified Timing

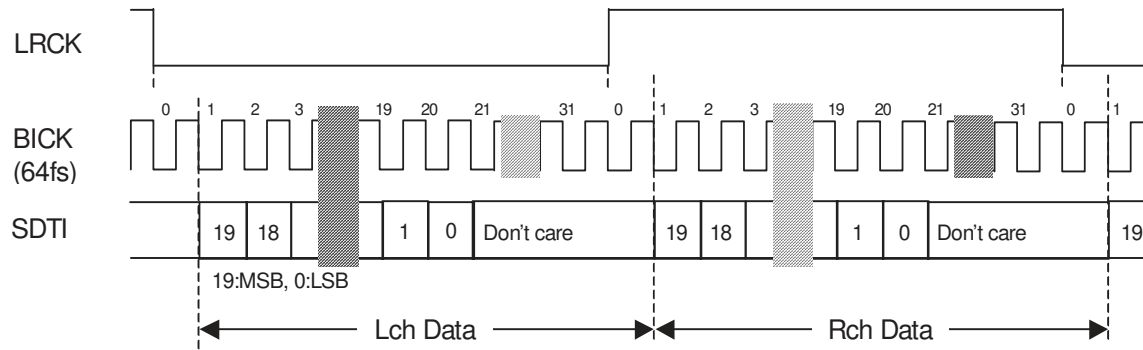
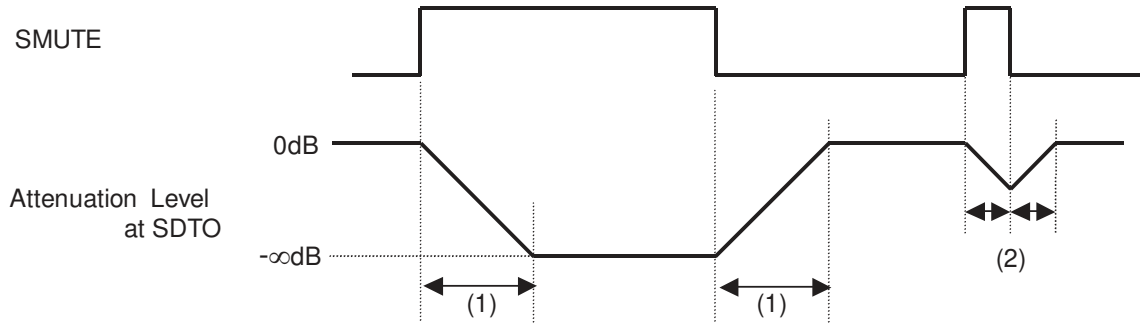


Figure 3. I²S Timing

■ **Soft Mute Operation**

When the SMUTE pin goes to “H”, the output signal is attenuated from 0dB to  $-\infty$ dB during 1024 OLRCK cycles. When the SMUTE pin returns to “0”, the mute is cancelled and the attenuation gradually changes to 0dB during 1024 OLRCK cycles. If the soft mute is cancelled before attenuating to  $-\infty$ , the attenuation is discontinued and returns to 0dB. This return takes the same number of clock cycles as the point at which the soft mute cancel was initiated, i.e. if 500 clock cycles passed and then a soft mute cancel was issued, it will take 500 clock cycles to return to 0dB. The soft mute is used primarily when changing the signal source.



Notes:

- (1) Transition time. 1024 OLRCK cycles (1024/fso).
- (2) If the soft mute is cancelled before attenuating to  $-\infty$  after starting the operation, the attenuation is discontinued and returned to 0dB by the same number of clock cycles.

Figure 4. Soft Mute

■ **De-emphasis Filter**

A digital de-emphasis filter is available for 32, 44.1 or 48kHz sampling rates ( $t_c=50/15\mu s$ ) and is enabled or disabled with DEM0 and DEM1.

| DEM1 | DEM0 | Mode    |
|------|------|---------|
| 0    | 0    | 44.1kHz |
| 0    | 1    | OFF     |
| 1    | 0    | 48kHz   |
| 1    | 1    | 32kHz   |

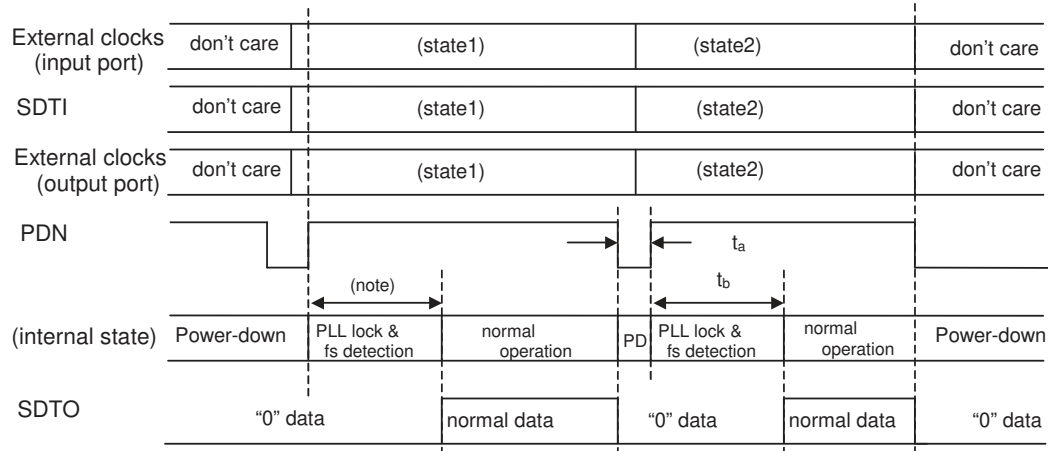
Default

Table 4. De-emphasis Filter Control

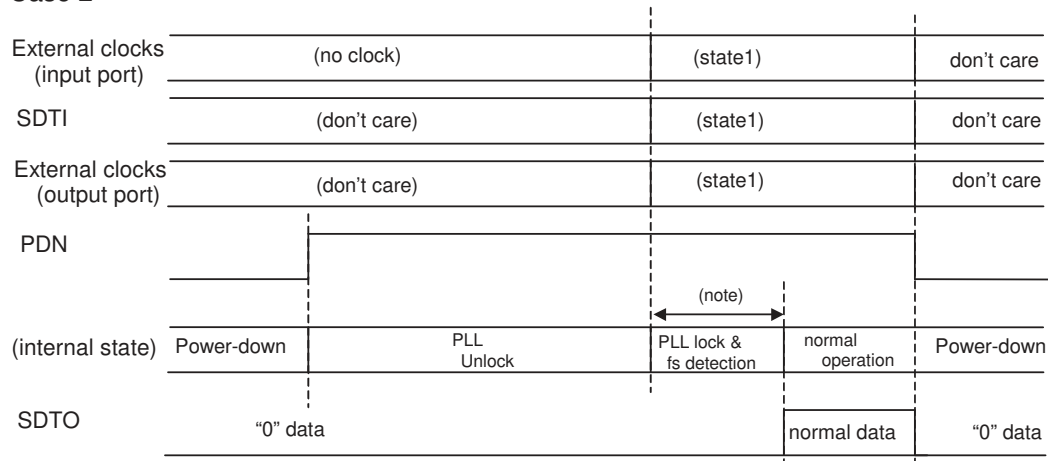
■ System Reset

Bringing the PDN="L" places the AK4121 in power-down mode and initializes the digital filter. The AK4121 should be reset once by bringing PDN="L" upon power-up. Regarding the SDTO valid time, please refer following table. Until then, the SDTO outputs "L".

Case 1



Case 2



Note: <100ms for recommended value 2, <200ms for recommended value 1. (ref. Figure 7)

Figure 5. System Reset

| Reset time<br>$t_a$ | Data valid time<br>$t_b$ |
|---------------------|--------------------------|
| ≤10ms               | <100ms                   |
| 10ms<               | <200ms                   |

Table 5. Reset time  $t_a$  and Data valid time  $t_b$ .

■ Internal Reset Function for Clock Change

The internal reset is executed when the input or the output clock are changed. The SDTO is placed “0” during reset. Within 100ms, the SDTO outputs normal data. When the frequency transition occurs gradually without phase change or the clock of output port is changed keeping  $f_{so}/f_{si} > 4$ , the internal reset is not executed and the SDTO takes time over 100ms to output normal data. To output normal data within 100ms, please reset by  $PDN=L$  (refer following section).

■ Sequence of changing clocks

The recommended sequence for changing clocks is shown in Figure 6.

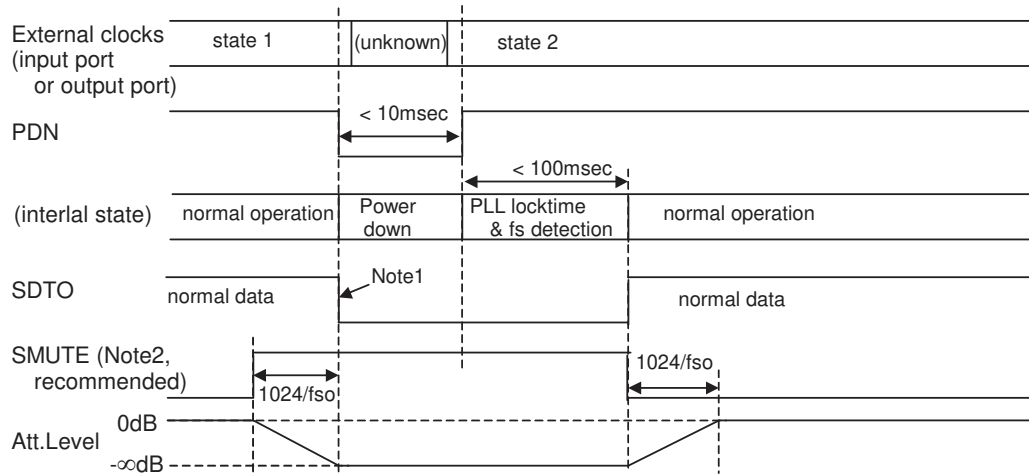


Figure 6. Sequence of changing clocks

Note:

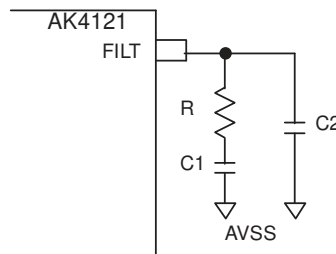
1. The data on SDTO may cause a clicking noise. To prevent this, set SDTI to “0” from GD before PDN goes “L”, which will cause the data on SDTO to remain “0”.
2. SMUTE can also be used to remove the unknown data.

■ **Grounding and Power Supply Decoupling**

The AK4121 requires careful attention to power supply and grounding arrangements. VDD are usually supplied from the system's analog supply. **AVSS and DVSS of the AK4121 must be connected to the analog ground plane.** System analog ground and digital ground should be connected together near to where the supplies are brought onto the printed circuit board. Decoupling capacitors especially a 0.1μF ceramic capacitor for high frequency noise should be placed as near to VDD as possible.

■ **PLL Loop-Filter**

The C1 (4.7μF) and R (560ohms) should be connected in series and attached between FILT pin and AVSS in parallel with C2 (1.0nF). Care should be taken to ensure that noise on the FILT pin is minimized.



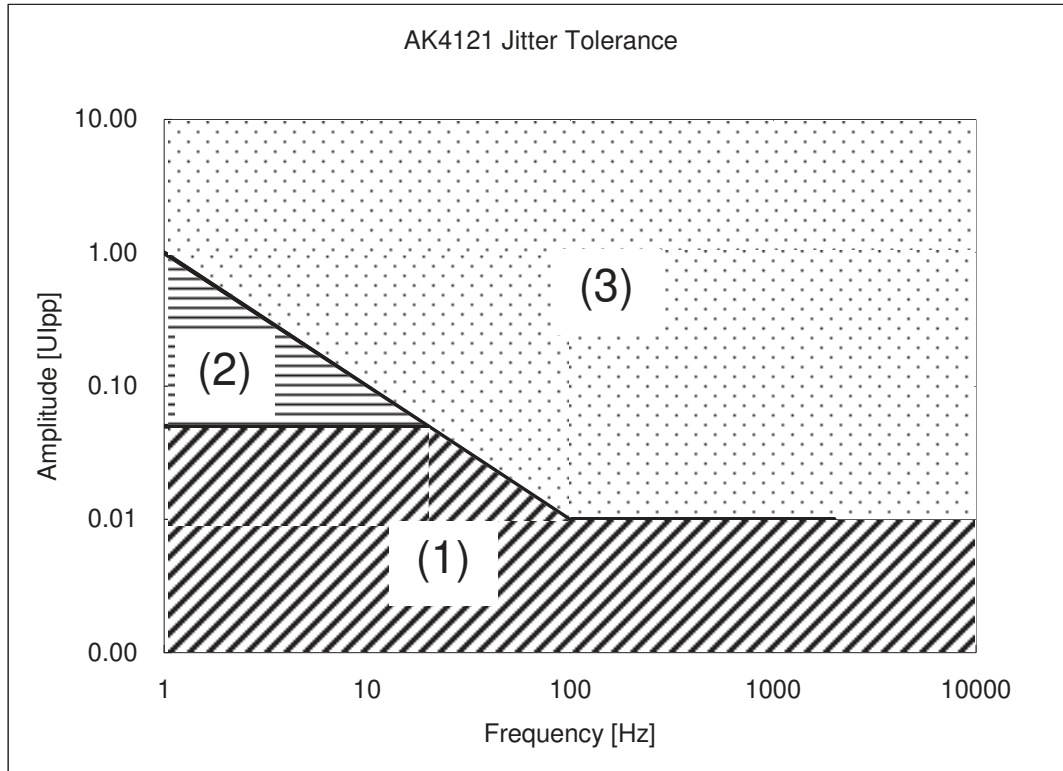
| Parameter | Recommended value 1 | Recommended value 2 |
|-----------|---------------------|---------------------|
| R         | 560ohm +/-8%        | 1.2kohm +/-8%       |
| C1        | 4.7μF +/-40%        | 2.2μF +/-40%        |
| C2        | 1.0nF +/-40%        | 2.2nF +/-40%        |
| fsi range | 8k ~ 96kHz          | 16k ~ 96kHz         |

Note: Those recommended values include temperature dependence.

Figure 7. PLL Loop-Filter

■ Jitter Tolerance

Figure 8 shows the jitter tolerance to ILRCK for AK4121. The jitter frequency and the jitter amplitude shown in Figure 8 define the jitter quantity. When the jitter amplitude is 0.01UIpp or less, the AK4121 operate normally regardless of the jitter frequency.



- (1) Normal operation
- (2) There is a possibility that the distortion degrades. (It may degrade up to about -50dB.)
- (3) There is a possibility that the output data is lost.

Note:

- The jitter amplitude is for ILRCK and 1UI (Unit Interval) is one cycle of ILRCK. When FSI = 48kHz, 1UI is 1/48kHz = 20.8μs.

Figure 8. Jitter Tolerance

**SYSTEM DESIGN**

Figure 9 and Figure 10 illustrate typical system connection diagrams. An evaluation board is available which demonstrates this application circuit, the optimum layout, and power supply arrangement and performance measurement results.

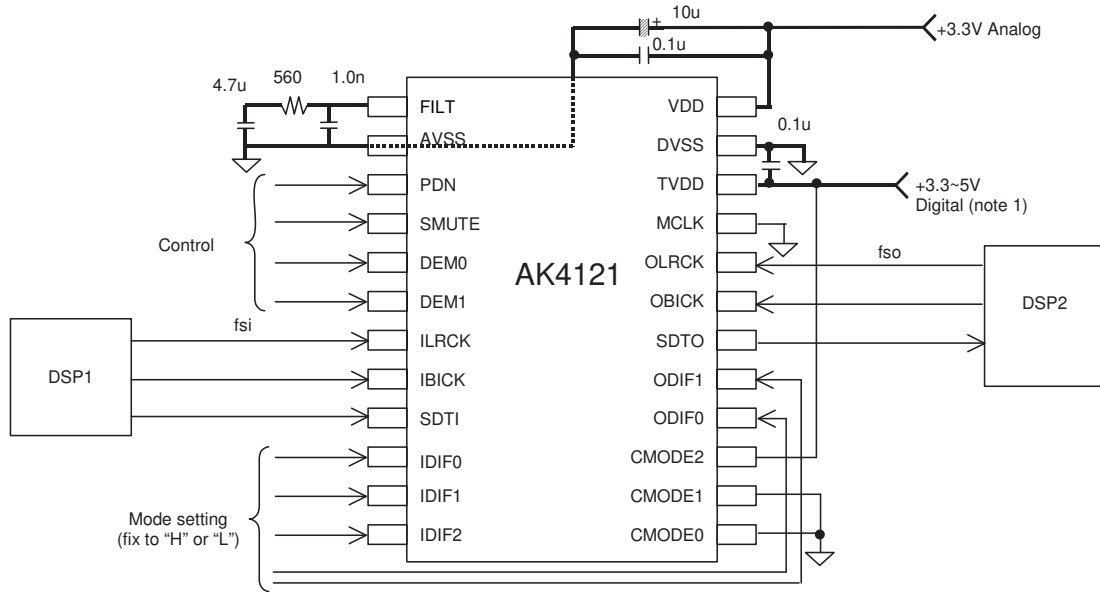


Figure 9. Example of a typical design (Slave Mode)

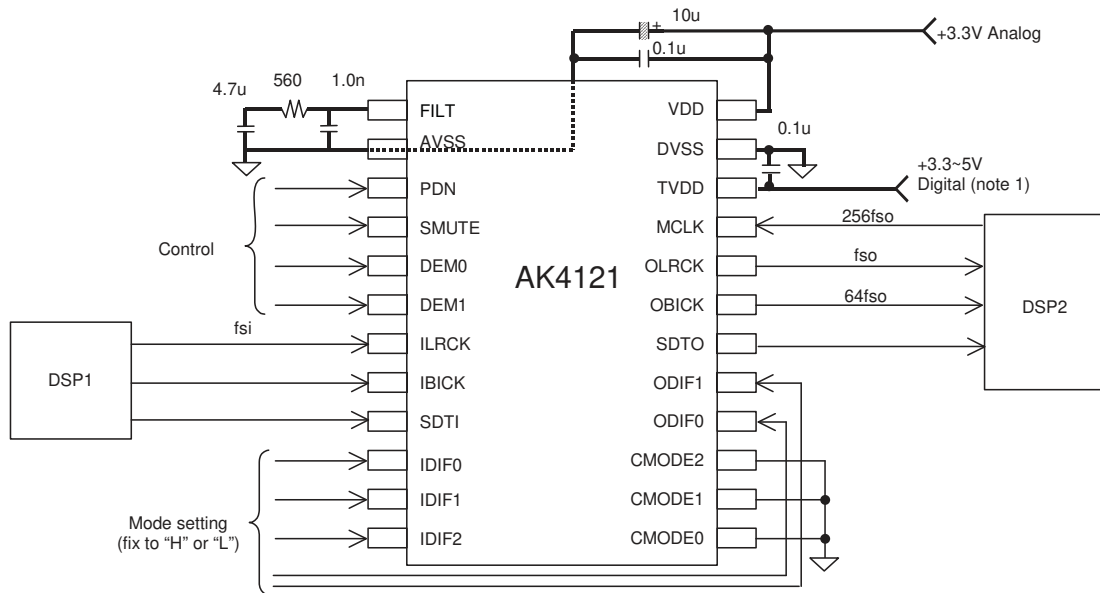


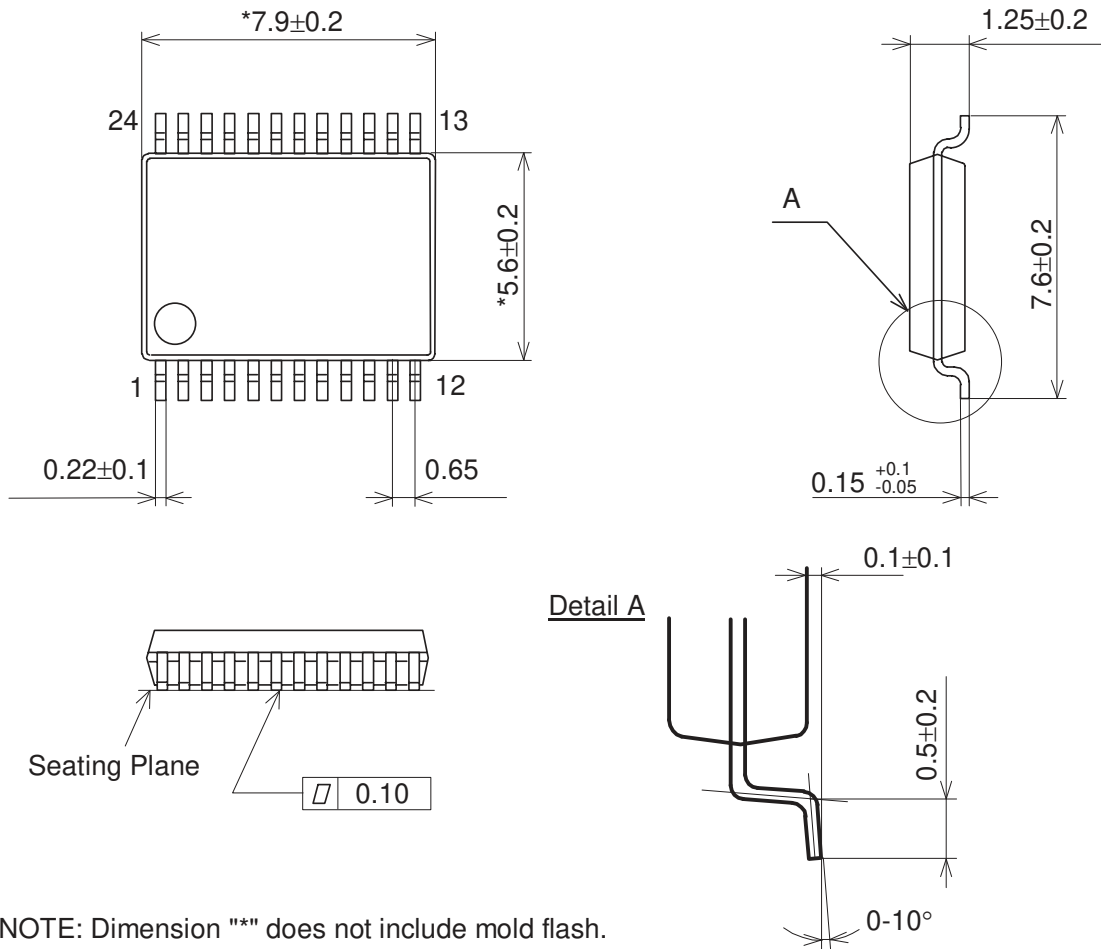
Figure 10. Example of a typical design (Master Mode; MCLK=256fso)

Note 1. TVDD should be the same as the maximum input voltage.



**PACKAGE**

**24pin VSOP (Unit: mm)**

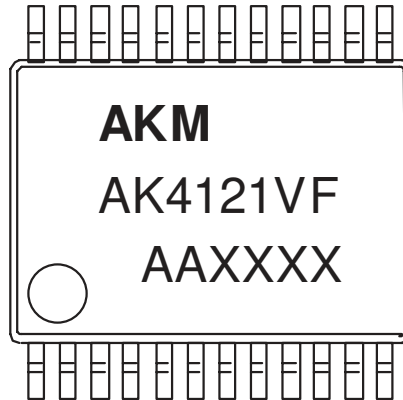


NOTE: Dimension "\*" does not include mold flash.

**■ Package & Lead frame material**

|                               |                        |
|-------------------------------|------------------------|
| Package molding compound:     | Epoxy                  |
| Lead frame material:          | Cu                     |
| Lead frame surface treatment: | Solder plate (Pb free) |

**MARKING**



Contents of AAXXXX  
 AA: Lot#  
 XXXX: Date Code

**Revision History**

| Date (YY/MM/DD) | Revision | Reason        | Page    | Contents                                                                                                                      |
|-----------------|----------|---------------|---------|-------------------------------------------------------------------------------------------------------------------------------|
| 02/11/28        | 00       | First Edition |         |                                                                                                                               |
| 02/12/26        | 01       | Error Correct | 4       | Polarity of THD+N is corrected.                                                                                               |
|                 |          | Error Correct | 8       | Figure for Power-down & Reset Timing is corrected.                                                                            |
|                 |          | Spec Change   | 12 ~ 15 | Values of external elements are changed. Condition for data valid time is changed.                                            |
| 04/01/27        | 02       | Add Spec      | 6       | SWITCHING CHARACTERISTICS<br>Audio Interface Timing<br>IBICK Period : min 160ns → 1/64fs<br>OBICK Period : min 160ns → 1/64fs |
| 04/08/16        | 03       | Add Spec      | 5       | Add FILTER CHARACTERISTICS                                                                                                    |
|                 |          | Add Spec      | 15      | Add Jitter Tolerance                                                                                                          |
|                 |          |               |         |                                                                                                                               |

IMPORTANT NOTICE

- These products and their specifications are subject to change without notice. Before considering any use or application, consult the Asahi Kasei Microsystems Co., Ltd. (AKM) sales office or authorized distributor concerning their current status.
- AKM assumes no liability for infringement of any patent, intellectual property, or other right in the application or use of any information contained herein.
- Any export of these products, or devices or systems containing them, may require an export license or other official approval under the law and regulations of the country of export pertaining to customs and tariffs, currency exchange, or strategic materials.
- AKM products are neither intended nor authorized for use as critical components in any safety, life support, or other hazard related device or system, and AKM assumes no responsibility relating to any such use, except with the express written consent of the Representative Director of AKM. As used here:
  - (a) A hazard related device or system is one designed or intended for life support or maintenance of safety or for applications in medicine, aerospace, nuclear energy, or other fields, in which its failure to function or perform may reasonably be expected to result in loss of life or in significant injury or damage to person or property.
  - (b) A critical component is one whose failure to function or perform may reasonably be expected to result, whether directly or indirectly, in the loss of the safety or effectiveness of the device or system containing it, and which must therefore meet very high standards of performance and reliability.
- It is the responsibility of the buyer or distributor of an AKM product who distributes, disposes of, or otherwise places the product with a third party to notify that party in advance of the above content and conditions, and the buyer or distributor agrees to assume any and all responsibility and liability for and hold AKM harmless from any and all claims arising from the use of said product in the absence of such notification.