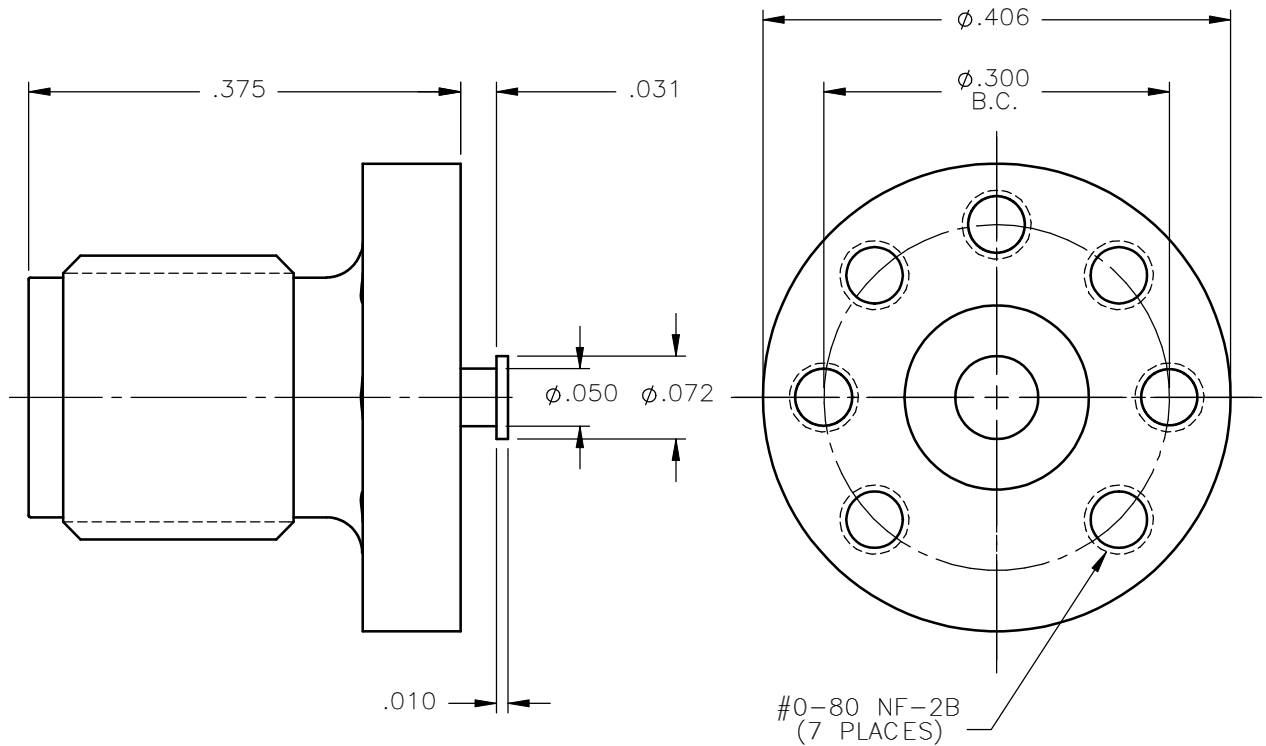


REVISIONS			
REV.	DESCRIPTION	DATE	APPROVED
A	INITIAL RELEASE	01/31/11	A.D.M.




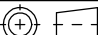
NOTES:

MATERIALS:

1. BODY = STAINLESS STEEL PER ASTM A582, ALLOY 303, CONDITION "A".
2. INSULATOR = VIRGIN WHITE TEFLON PER ASTM D1710, GRADE 1, TYPE I, CLASS "B".
3. CONTACT = BERYLLIUM COPPER PER ASTM B196, ALLOY C17300, TEMPER TD04.

FINISHES:

1. BODY = PASSIVATE PER QQ-P-35, TYPE VI.
2. CONTACT = GOLD PLATE PER MIL-G-45204, TYPE II, CLASS 1, GRADE C, OVER .00010 TO .00020 STRESS FREE SULFAMATE NICKEL PER QQ-N-290.

UNLESS OTHERWISE SPECIFIED DIMENSIONS ARE IN INCHES TOLERANCES ON		DWN: DATE		<div></div> <div>Property of Radiall This document cannot be reproduced or communicated to a third party without prior written permission of RADIALL.</div>			
		A.D.M. 01/31/11					
DECIMAL	ANGLE	CHKD: DATE		<div>SMA STRAIGHT JACK TO STRIPLINE NON-CAPTIVE CONTACT</div>			
		D.N. 01/31/11					
		APVD: DATE					
		J.M. 01/31/11					
REFERENCE:		MATERIALS & FINISHES: SEE NOTES		SIZE A	FSCM NO. 19505	DWG NO. 9610-9213-001	REV A
ORIGINATED: A.D.M. DATE: 01/31/11				SCALE 4:1		THIRD ANGLE PROJECTION 	

9610-9213-001