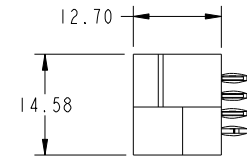
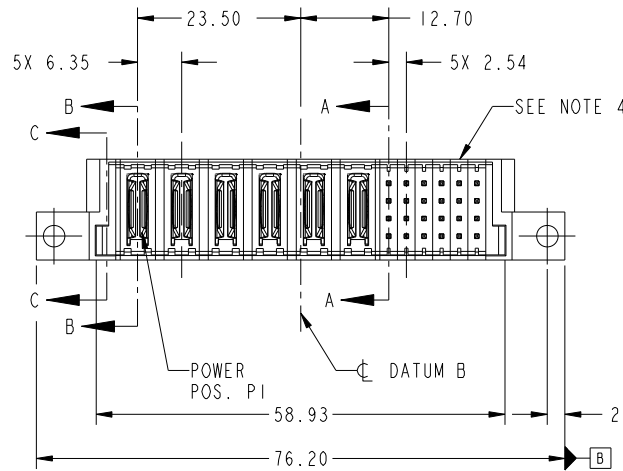
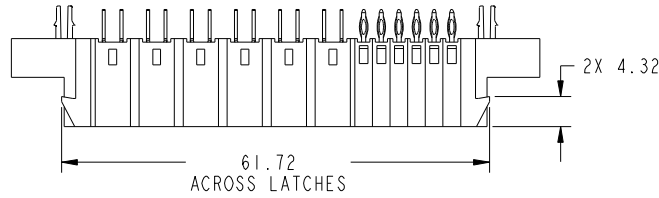
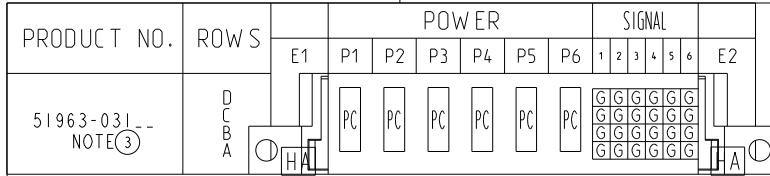


Tous droits strictement réservés. Reproduction ou communication a des tiers interdite sous quelque forme que ce soit sans autorisation écrite du propriétaire. Propriete de c FCI. Droits de reproduction FCI.



All rights strictly reserved. Reproduction or issue to third parties in any form whatever is not permitted without written authority from the proprietor. Property of FCI. Copyright FCI.



CODE	DIM "M" MATING LENGTH	CONTACT TYPE
PC	[N/A]	POWER
G	[6.86]	SIGNAL
HA	[N/A]	HOLD-DOWN

mat'l code				tolerances unless otherwise specified				CUSTOMER	
ltr	ecn no.	dr	date	linear	0.X ± 0.5	projection	FCI www.fciconnect.com		
A	DG09-0310	WD	09/21/09	angles	0.XX ± 0.25		title 6P + 24S VERTICAL PRESS FIT HEADER		
					0.XXX ± 0.1		product family PwrBlade	code 213	
				dr	0° ± 2°		size	sheet 1 of 4	
				enr	Warren Du 07/07/08		scale	1:1	
				chr	Warren Du 07/07/08		dwg no 51963-031		
				appd	PM ZHENG 07/07/08		cage code 22526		
					Joseph Hsia 07/07/08				
sheet index	revision sheet	A 1	A 2	A 3	A 4				

Pro/E

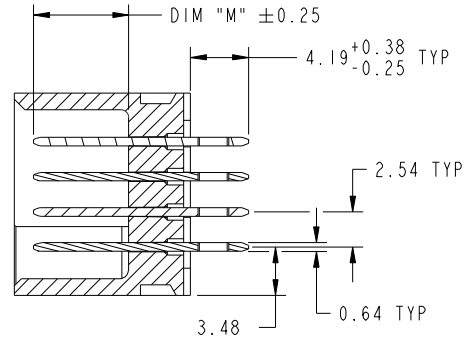
cage code 22526

Tous droits strictement reserves. Reproduction ou communication a des tiers interdite sous quelque forme que ce soit sans autorisation écrite du propriétaire. Propriete de c FCI. Droits de reproduction FCI.

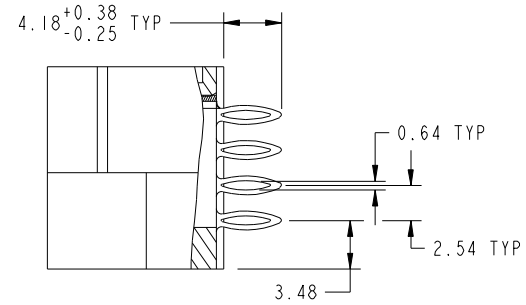
All rights strictly reserved. Reproduction or issue to third parties in any form whatever is not permitted without written authority from the proprietor. Property of FCI. Copyright FCI.



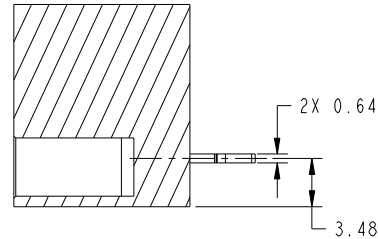
PRODUCT NUMBER  
51963-031\_\_  
NOTE 3



SECTION A-A  
SCALE 2:1



SECTION B-B  
SCALE 2:1



SECTION C-C  
SCALE 2:1

mat'l code				tolerances unless otherwise specified		CUSTOMER	FCI	
ltr	ecn no.	dr	date	linear	0.X ±0.5	COPY	www.fciconnect.com	
A				linear	0.XX ±0.25	projection	title 6P + 24S	
				angles	0.XXX ±0.1		VERTICAL PRESS FIT HEADER	
				dr	0° ±2°		product family	PwrBlade
				enr	Warren Du 07/07/08	scale	size	code
				chr	Warren Du 07/07/08	1:1	dwg no	213
				appd	PM ZHENG 07/07/08		A	51963-031
					Joseph Hsia 07/07/08			sheet 2 of 4
sheet index	revision sheet							

cage code 22526

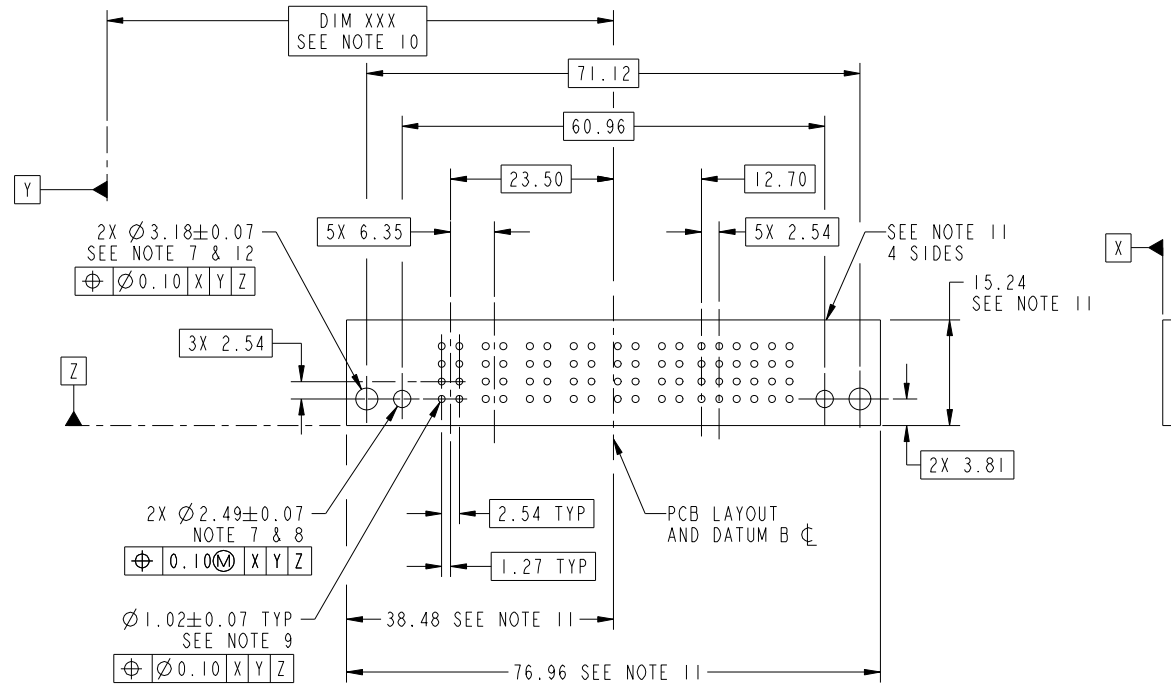
Pro/E

Tous droits strictement reserves. Reproduction ou communication a des tiers interdite sous quelque forme que ce soit sans autorisation écrite du propriétaire. Propriete de c FCI. Droits de reproduction FCI.

All rights strictly reserved. Reproduction or issue to third parties in any form whatever is not permitted without written authority from the proprietor. Property of FCI. Copyright FCI.



PRODUCT NUMBER  
51963-031\_\_  
NOTE 3



RECOMMENDED PCB LAYOUT

mat'l code				tolerances unless otherwise specified		CUSTOMER		FCI	
ltr	ecn no.	dr	date	linear	0.X ±0.5	COPY		www.fciconnect.com	
A					0.XX ±0.25	projection		title 6P + 24S	
				angles	0.XXX ±0.1			VERTICAL PRESS FIT HEADER	
				dr	0° ±2°			product family PwrBlade code 213	
				enr	Warren Du 07/07/08	scale		size dwg no 213	
				chr	Warren Du 07/07/08	1:1		sheet 3 of 4	
				appd	PM ZHENG 07/07/08			51963-031	
					Joseph Hsia 07/07/08				
sheet index	revision sheet								

cage code 22526

Pro/E

Tous droits strictement reserves. Reproduction ou communication a des tiers interdite sous quelque forme que ce soit sans autorisation écrite du propriétaire. Propriete de c FCI. Droits de reproduction FCI.



All rights strictly reserved. Reproduction or issue to third parties in any form whatever is not permitted without written authority from the proprietor. Property of FCI. Copyright FCI.

PRODUCT NUMBER  
51963-031\_\_  
NOTE 3

NOTES:

1. DIMENSIONS AND TOLERANCES ARE IN ACCORDANCE WITH ASME Y14.5M, 1994 UNLESS OTHERWISE SPECIFIED.

CONNECTOR NOTES:

- 2 HOUSING MATERIAL: UL 94 V-0 GLASS FILLED HIGH-TEMP THERMOPLASTIC  
POWER CONTACT MATERIAL: COPPER ALLOY  
SIGNAL PIN MATERIAL: COPPER ALLOY
- 3. SEE ITEM 3 & 4 IN PRINT 10064183 FOR PLATING SPEC OF 51963-031 AND 51963-031LF RESPECTIVELY.
- 4 MANUFACTURER'S NAME, P/N, AND DATE CODE TO APPEAR ON THIS SURFACE.
- 5. PRODUCT SPECIFICATION GS-12-149.  
APPLICATION SPECIFICATION BUS-20-067.
- 6. PACKAGED IN TRAYS.

PCB NOTES:

- 7. ALL HOLE DIAMETERS ARE FINISHED HOLE SIZE.
- 8. MOUNTING HOLES, WHERE APPLICABLE, ARE UNPLATED.
- 9  $\varnothing 1.151 \pm 0.025$  DRILLED HOLES PLATED WITH  
0.008 MIN SnPb OR Sn OVER .001 [0.03]  
TO 0.08 Cu PLATING TO ACHIEVE  
 $\varnothing 1.02 \pm .07$  HOLE.
- 10 "DIM XXX" TO BE DETERMINED BY THE CUSTOMER.
- 11 CONNECTOR KEEP-OUT ZONE.
- 12. CUSTOMER SUPPLIES (2) #4-40 UNC SCREW, HARDWARE TO MOUNT HEADER TO PC BOARD.

mat'l code				tolerances unless otherwise specified		CUSTOMER		FCI	
ltr	ecn no.	dr	date	linear	0.X ± 0.5	COPY		www.fciconnect.com	
A					0.XX ± 0.25	projection		title	
				angles	0.XXX ± 0.1			6P + 24S VERTICAL PRESS FIT HEADER	
				dr	0° ± 2°	MIM		product family PwrBlade code	
				enr	Warren Du 07/07/08			size 213	
				chr	Warren Du 07/07/08	scale		dwg no 51963-031 sheet	
				appd	PM ZHENG 07/07/08	1:1		4 of 4	
					Joseph Hsia 07/07/08				
sheet index	revision sheet								

cage code 22526

Pro/E