

Using the TPS40131EVM, A 40A Single Output Two-Phase Synchronous Buck Converter

Contents

1	Introduction	2
2	Description.....	2
3	TPS40131EVM Electrical Performance Specifications	3
4	Schematic	4
5	Test Set Up.....	5
6	TPS40131EVM Typical Performance Data and Characteristic Curves	10
7	EVM Assembly Drawings and Layout	13
8	List of Materials.....	19

List of Figures

1	TPS40131EVM Power Stage/Control Schematic For Reference Only, See Table 3: Bill of Materials for Specific Values	4
2	TPS40131EVM Recommended Test Set-Up	7
3	Output Ripple Measurement	8
4	Default EN Configuration	9
5	EN/SYNC Configuration	9
6	Connect External Clock to J2	9
7	TPS40131EVM Efficiency $V_{IN} = 10.8\text{--}13.2\text{V}$, $V_{OUT} = 1.5\text{V}$, $I_{OUT} = 0\text{--}40\text{A}$	11
8	TPS40131EVM $V_{OUT} = 1.5\text{V}$ Load Regulation	11
9	TPS40131EVM $V_{OUT} = 1.5\text{V}$ Line Regulation.....	12
10	Loop Gain When $V_{IN} = 13.2\text{V}$ and $I_{OUT} = 40\text{A}$	12
11	0–15A load step, Ch1: I_{OUT} ; Ch4: V_{OUT}	13
12	TPS40131EVM Component Placement (Viewed from Top)	14
13	TPS40131EVM Top Copper (Viewed from Top).....	15
14	TPS40131EVM Layer 2 Copper (X-Ray View from Top)	16
15	TPS40131EVM Layer 3 Copper (X-Ray View from Top)	17
16	TPS40131EVM Bottom Copper (X-Ray View from Top).....	18

List of Tables

1	TPS40131EVM Electrical and Performance Specifications.....	3
2	List of Test Points	10
3	TPS40131EVM Bill of Materials.....	19

1 Introduction

The TPS40131EVM evaluation module (EVM) is a single output two-phase synchronous buck converter. The EVM delivers 1.5V at 40A. The module uses the TPS40131 Synchronous Buck Controller.

2 Description

TPS40131EVM is designed to use a regulated 10.8V to 13.2V bus to produce a high current, regulated output. The output is capable of supplying up to 40A of load current. The TPS40131EVM is designed to demonstrate the TPS40131 in a typical regulated bus to low-voltage application while providing a number of test points to evaluate the performance of the TPS40131 in a given application.

2.1 Applications

- Point of Load Converters
- Graphics Cards
- Internet Servers
- Networking Equipment
- Telecommunications Equipment
- DC Power Distributed Systems

2.2 Features

- 10.8V – 13.2V input range
- 1.5V fixed output
- 40-A DC Steady State Current
- 380kHz switching frequency per phase
- Single Main Switch N-channel MOSFET and Two Synchronous Rectifier N-channel MOSFETs per phase
- Convenient test points for probing critical waveforms and non-invasive loop response testing

3 TPS40131EVM Electrical Performance Specifications

Table 1. TPS40131EVM Electrical and Performance Specifications

Parameter	Notes and Conditions	Min	Typ	Max	Units
INPUT CHARACTERISTICS					
Input voltage range (V_{IN1})		10.8		13.2	V
Max input current	$V_{IN1} = 10.8\text{ V}$, $I_{OUT} = 40\text{ A}$		6.5		A
No-load input current	$V_{IN1} = 13.2\text{ V}$, $I_{OUT} = 0\text{ A}$		35		mA
Input voltage range (V_{IN2})		4.5		5.5	V
Max input current			120		mA
OUTPUT CHARACTERISTICS					
OUTPUT (V_{OUT})					V
Output voltage			1.5		V
Output voltage regulation	Line Regulation ($10.8\text{ V} < V_{IN} < 13.2\text{ V}$, $I_{OUT} = 40\text{ A}$)			0.2%	
	Load Regulation ($0\text{ A} < I_{OUT} < 40\text{ A}$, $V_{IN} = 12\text{ V}$)			0.2%	
Output voltage ripple	$V_{IN} = 13.2\text{ V}$, $I_{OUT} = 40\text{ A}$		30		mVpp
Output load current	I_{OUT}	0		40	A
Output over current				55	A
SYSTEM CHARACTERISTICS					
Switching Frequency			380		kHz
Peak efficiency	$V_{OUT} = 1.5\text{ V}$, $18\text{ A} < I_{OUT} < 22\text{ A}$, $V_{IN} = 12\text{ V}$		88.5%		
Full load efficiency	$V_{OUT} = 1.5\text{ V}$, $I_{OUT} = 40\text{ A}$, $V_{IN} = 12\text{ V}$		85%		

4 Schematic

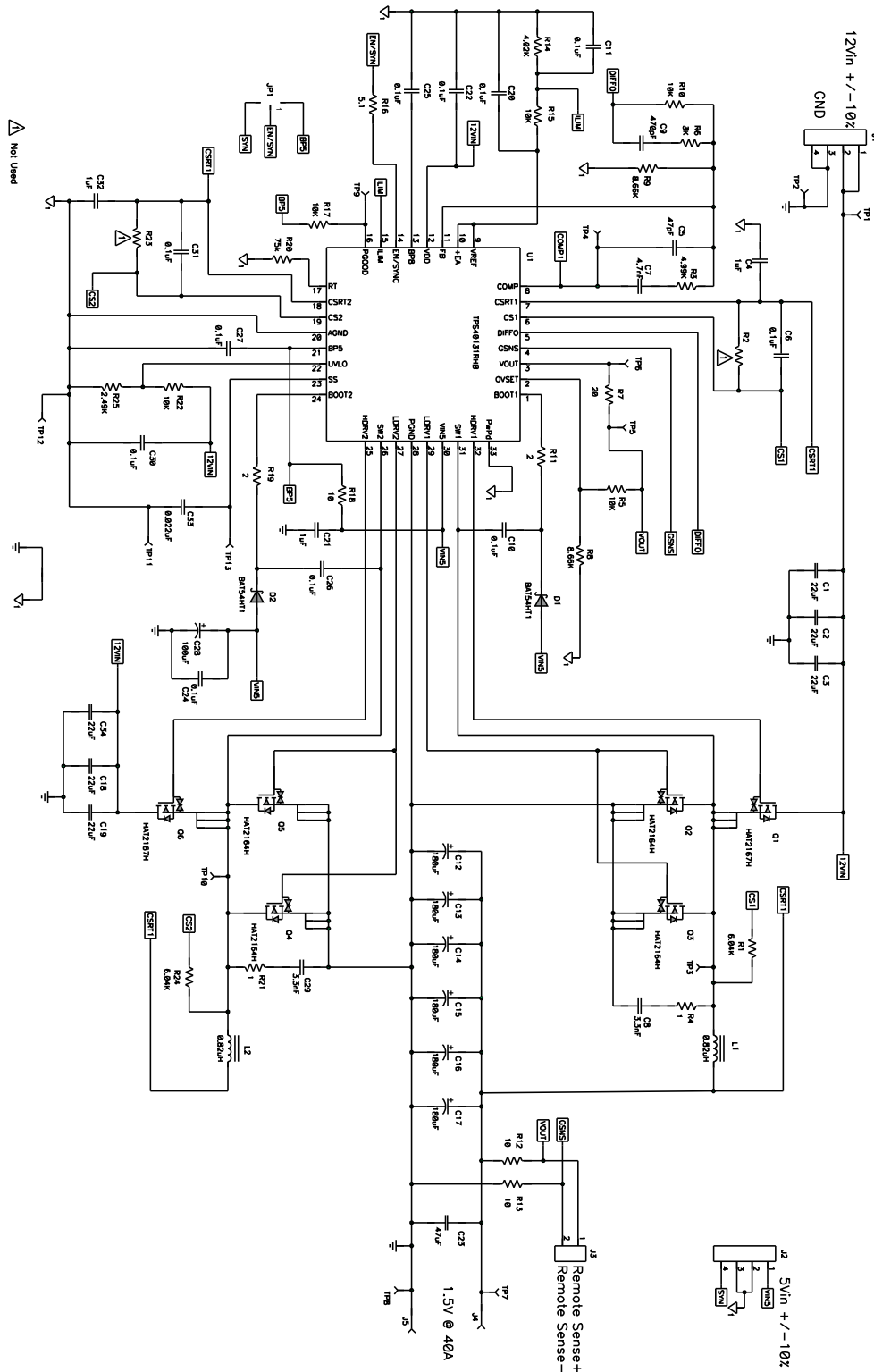


Figure 1. TPS40131EVM Power Stage/Control Schematic
 For Reference Only, See [Table 3: Bill of Materials for Specific Values](#)

5 Test Set Up

5.1 Recommended Test Equipment

5.1.1 Voltage Source

The input voltage source V_{IN1} should be a 0–15 V variable DC source capable of 10 A. Connect V_{IN1} to J1 as shown in [Figure 2](#).

The input voltage source V_{IN2} should be a 0–6 V variable DC source capable of 2 A. Connect V_{IN2} to J2 as shown in [Figure 2](#).

5.1.2 Meters

V1: V_{IN} 0–15 V voltmeter
V2: V_{OUT} 0–5 V voltmeter
I1: I_{IN} , 0–10 A current meter

5.1.3 Loads

The output load (LOAD) should be an electronic constant current mode load capable of 0–40 A DC at 1.5 V.

5.1.4 Oscilloscope

A digital or analog oscilloscope can be used to measure the ripple voltage on V_{OUT} . The oscilloscope should be set for 1 M Ω impedance, 20MHz Bandwidth, AC coupling, 1 μ s/division horizontal resolution, 20mV/division vertical resolution for taking output ripple measurements. Test points TP7 and TP8 can be used to measure the output ripple voltage by placing the oscilloscope probe tip through TP7 and holding the ground barrel TP8 as shown in [Figure 3](#). Using a leaded ground connection may induce additional noise due to the large ground loop area.

5.1.5 Recommended Wire Gauge

VIN1 to J1 (12V input)

The connection between the source voltage, V_{IN1} and J1 of the EVM can carry as much as 10 Amps DC. The recommended wire size is 1x AWG #16 per input connection, with the total length of wire less than 4 feet (2 feet input, 2 feet return).

VIN2 to J2 (5V auxiliary input)

The connection between the source voltage, V_{IN2} and J2 of the EVM can carry as much as 1 Amps DC. The recommended wire size is 1x AWG #22 per input connection, with the total length of wire less than 4 feet (2 feet input, 2 feet return).

J4,J5 to LOAD (Power)

The power connection between J4, J5 of the EVM and LOAD can carry as much as 40-A DC. The minimum recommended wire size is 2x AWG #16, with the total length of wire less than 4 feet (2 feet output, 2 feet return).

5.1.6 Other

FAN

This evaluation module includes components that can get hot to the touch, because this EVM is not enclosed to allow probing of circuit nodes, a small fan capable of 200–400 lfm is required to reduce component surface temperatures to prevent user injury. The EVM should not be left unattended while powered. The EVM should not be probed while the fan is not running.

5.2 Equipment Setup

Shown in [Figure 2](#) is the basic test set up recommended to evaluate the TPS40131EVM.

Working at an ESD workstation, make sure that any wrist straps, bootstraps or mats are connected referencing the user to earth ground before power is applied to the EVM. Electrostatic (ESD) smock and safety glasses should also be worn.

5.2.1 Input Connections

1. Prior to connecting the DC input source, V_{IN1} , it is advisable to limit the source current from V_{IN1} to 10A maximum. Make sure V_{IN1} is initially set to 0V and connected as shown in [Figure 2](#).
2. Connect V_{IN2} to J2 and set V_{IN2} to 5V.

5.2.2 Output Connections

1. Connect LOAD to J4 and J5, set LOAD to constant current mode to sink 0A DC before V_{IN1} is applied.
2. Connect voltmeter, V2, across TP7 and TP8, as shown in [Figure 2](#).

5.2.3 Other Connections

1. Place Fan as shown in [Figure 2](#) and turn on, making sure air is flowing across the EVM.

5.2.4 Set Up Diagram

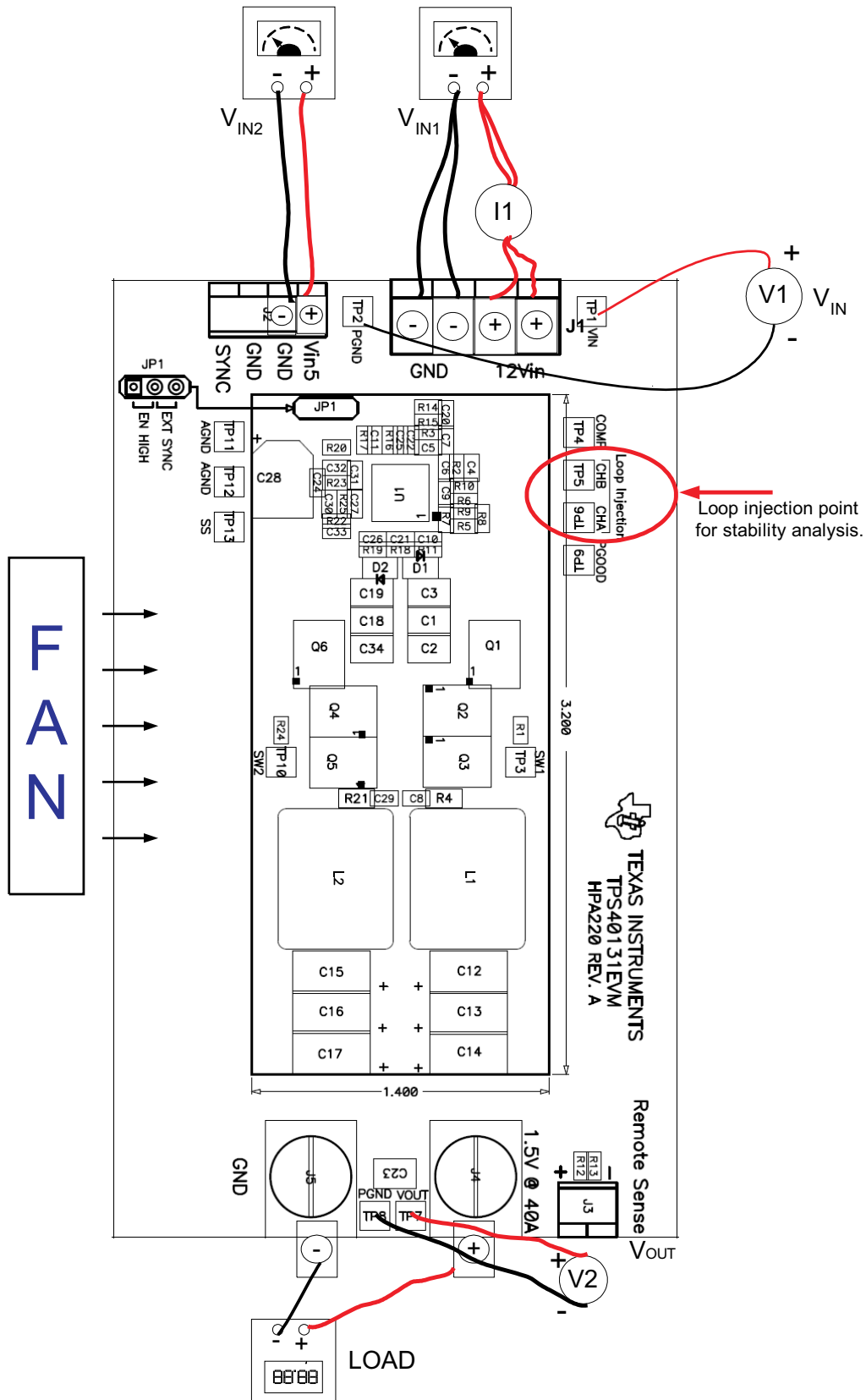


Figure 2. TPS40131EVM Recommended Test Set-Up

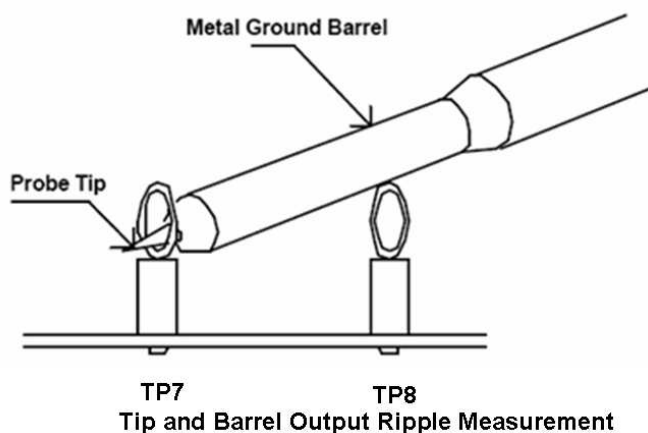


Figure 3. Output Ripple Measurement

5.3 Start Up and Test Procedure

1. Ensure LOAD is set to constant current mode and to sink 0A DC.
2. Set V_{IN2} to 5V.
3. Increase V_{IN1} from 0V to 12V, V_{OUT} should be in regulation per [Table 1](#).
4. Vary LOAD from 0–40Adc, V_{OUT} should remain in regulation per [Table 1](#) for all combinations of load on LOAD up to 40A.
5. Vary V_{IN1} from 10.8V to 13.2V, V_{OUT} should remain in regulation per [Table 1](#) for all combinations of load on LOAD up to 40A.

5.4 Control Loop Gain and Phase Measurement Procedure

1. Connect 1 kHz–1MHz isolation transformer to test points marked TP5 and TP6.
2. Connect input signal amplitude measurement probe (channel A) to TP6.
3. Connect output signal amplitude measurement probe (channel B) to TP5.
4. Connect ground lead of channel A and channel B to TP11.
5. Inject 25mV or less signal through the isolation transformer.
6. Sweep the frequency from 100Hz to 1MHz with 10Hz or lower post filter.
7. The control loop gain can be measured by $20 \times \text{LOG} \left(\frac{\text{Channel B}}{\text{Channel A}} \right)$.
8. Control loop phase is measured by the phase difference between Channel A and Channel B.
9. Disconnect isolation transformer from the bode plot test points before making other measurements (Signal Injection into Feedback may interfere with accuracy of other measurements).

5.5 EN/SYNC Configuration

5.5.1 EN High (Default)

Configure JP1 with a jumper as shown in [Figure 4](#). The controller will generate its own clock and the operation is enabled.

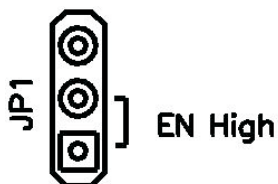


Figure 4. Default EN Configuration

5.5.2 External Synchronization

Configure JP1 with a jumper as shown in the following figure and connect a clock source to SYNC and GND pins of J2 as shown in [Figure 6](#). The controller will synchronize to the external clock.

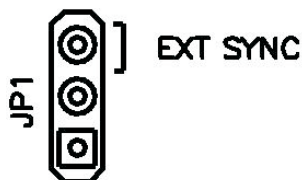


Figure 5. EN/SYNC Configuration

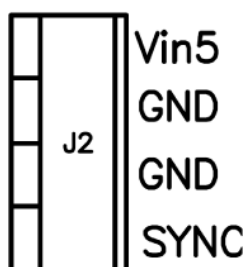


Figure 6. Connect External Clock to J2

5.6 Test Points

Several test points are located around the board. These can be used to sense what is occurring at different points of the converter. [Table 2](#) lists these test points and what they are used for.

Table 2. List of Test Points

NAME	TEST POINT LABEL	DESCRIPTION
TP1	VIN	Input voltage positive sense point
TP2	PGND	Input voltage negative sense point
TP3	SW1	Channel 1 switch node
TP4	COMP	Error amplifier output
TP5	CHB	Loop injection point CHB
TP6	CHA	Loop injection point CHA
TP7	VOUT	Output positive sense point
TP8	PGND	Output negative sense point
TP9	PGOOD	Power good
TP10	SW2	Channel 2 switch node
TP11	AGND	Analog ground
TP12	AGND	Analog ground
TP13	SS	Soft start

5.7 Equipment Shutdown

- A. Shut down LOAD
- B. Shut down V_{IN1}
- C. Shut down V_{IN2}
- D. Shut down FAN

6 TPS40131EVM Typical Performance Data and Characteristic Curves

[Figure 7](#) through [Figure 9](#) present typical performance curves for the TPS40131EVM. Since actual performance data can be affected by measurement techniques and environmental variables, these curves are presented for reference and may differ from actual field measurements.

6.1 Efficiency

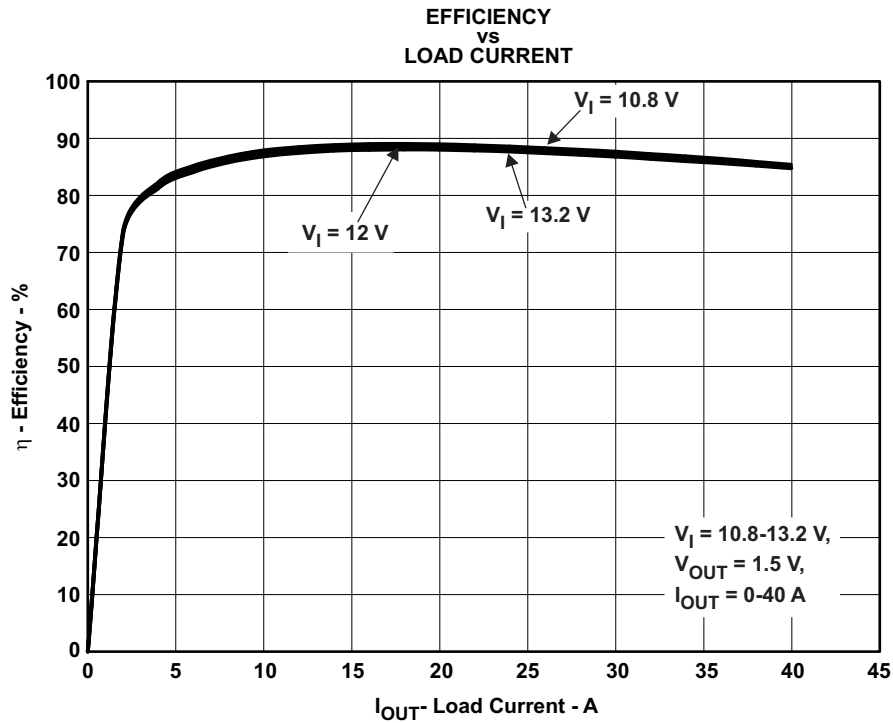


Figure 7. TPS40131EVM Efficiency
 $V_{IN} = 10.8-13.2V$, $V_{OUT} = 1.5V$, $I_{OUT} = 0-40A$

6.2 Line and Load Regulation

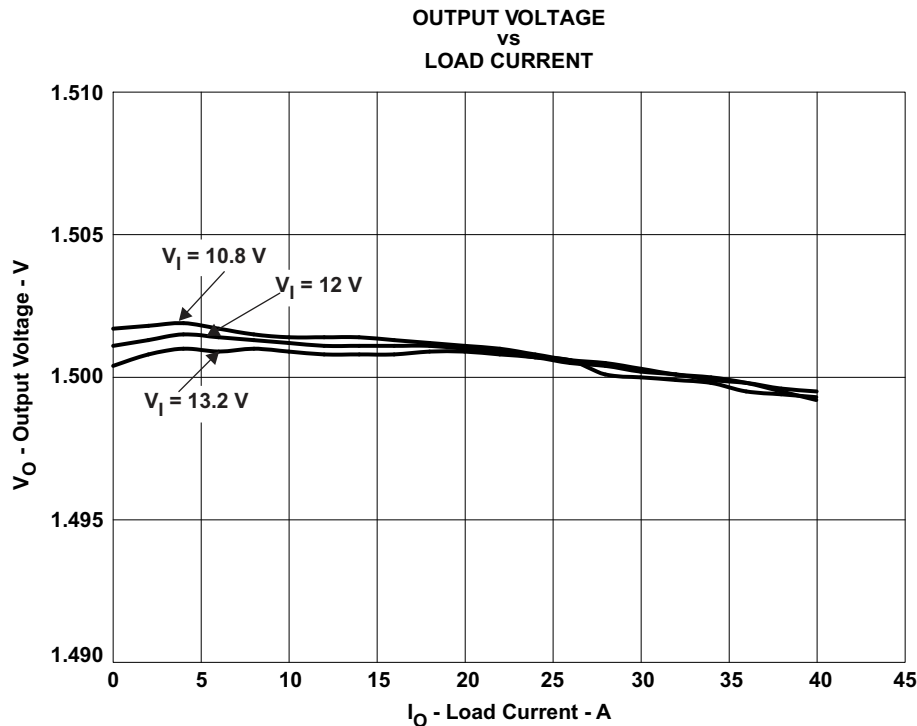


Figure 8. TPS40131EVM $V_{OUT} = 1.5V$ Load Regulation

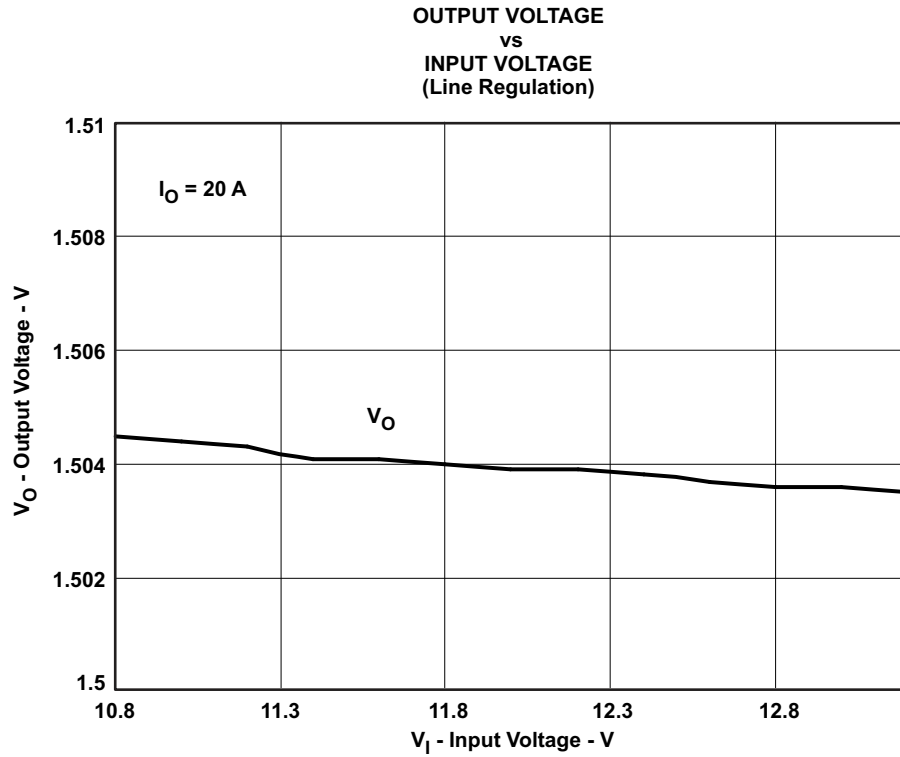


Figure 9. TPS40131EVM $V_{OUT} = 1.5\text{V}$ Line Regulation

6.3 Bode Plot

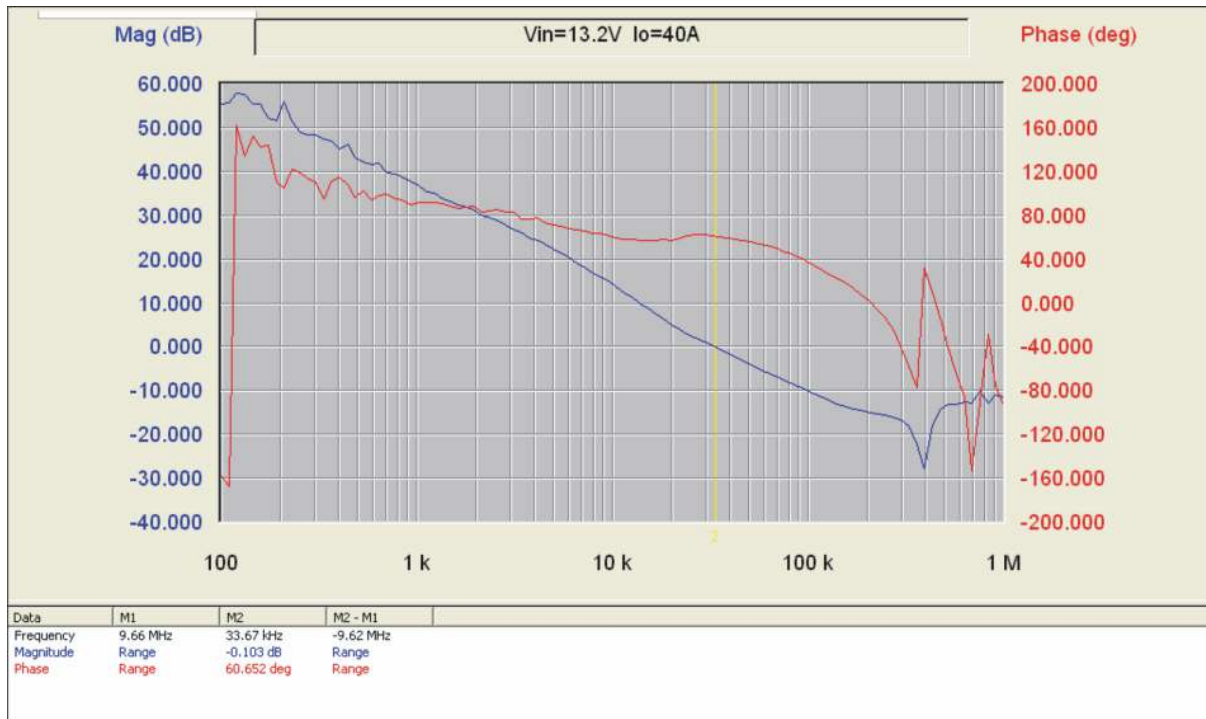


Figure 10. Loop Gain When $V_{IN} = 13.2\text{V}$ and $I_{OUT} = 40\text{A}$

6.4 Transient Response

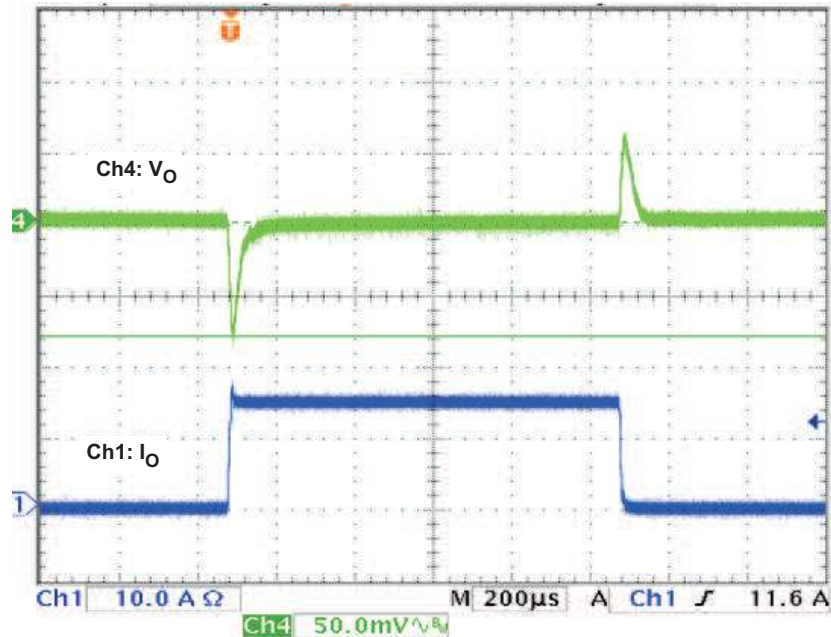


Figure 11. 0–15A load step, Ch1: I_{OUT} ; Ch4: V_{OUT}

7 EVM Assembly Drawings and Layout

The following figures (Figure 12 through Figure 16) show the design of the TPS40131EVM printed circuit board. The EVM has been designed using a four layer, 2-ounce, copper-clad circuit board with all components on the top side, allowing the user to easily view, probe and evaluate the TPS40131 control IC in a practical application. Moving components to both sides of the PCB or using additional internal layers can offer additional size reduction for space-constrained systems.

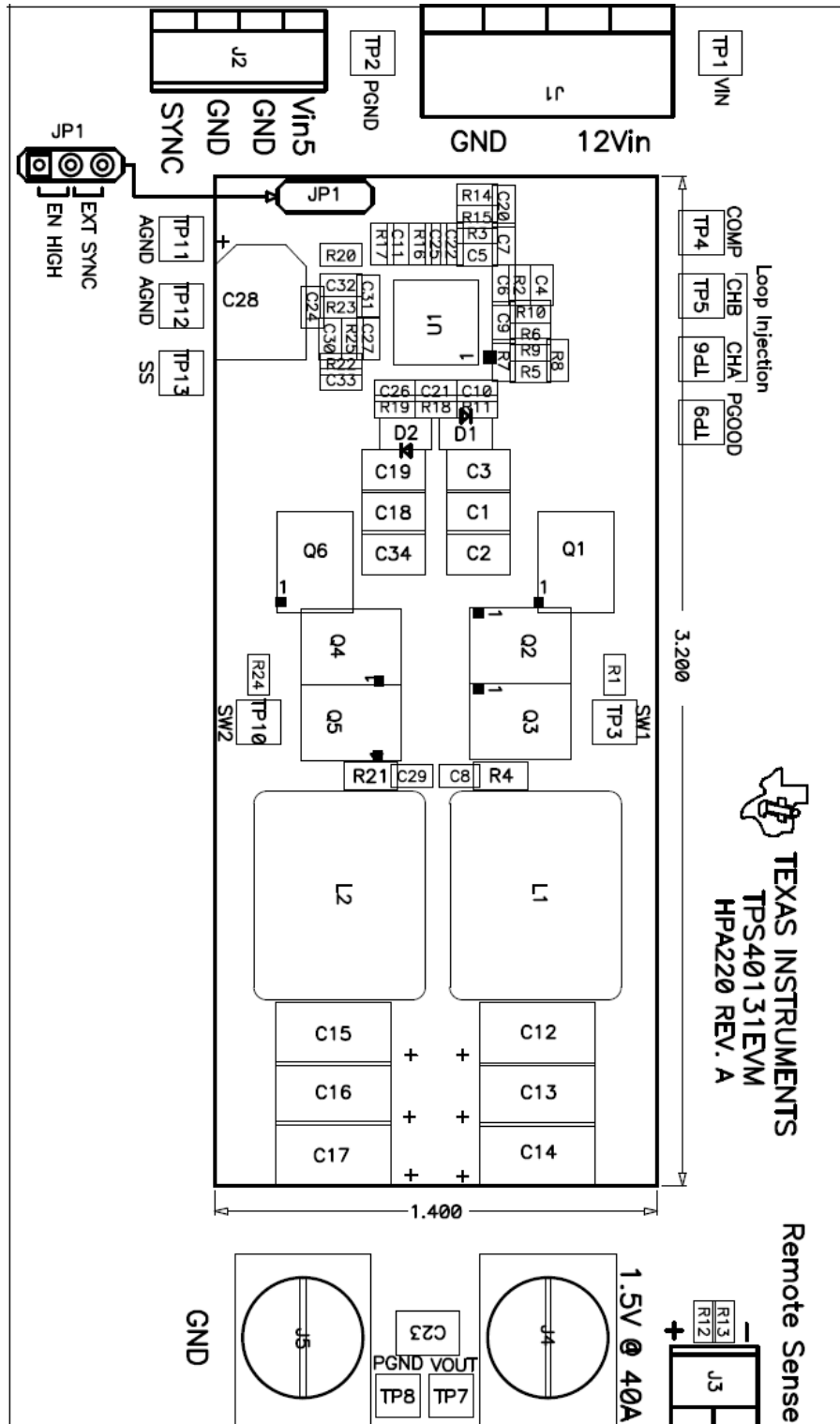


Figure 12. TPS40131EVM Component Placement (Viewed from Top)

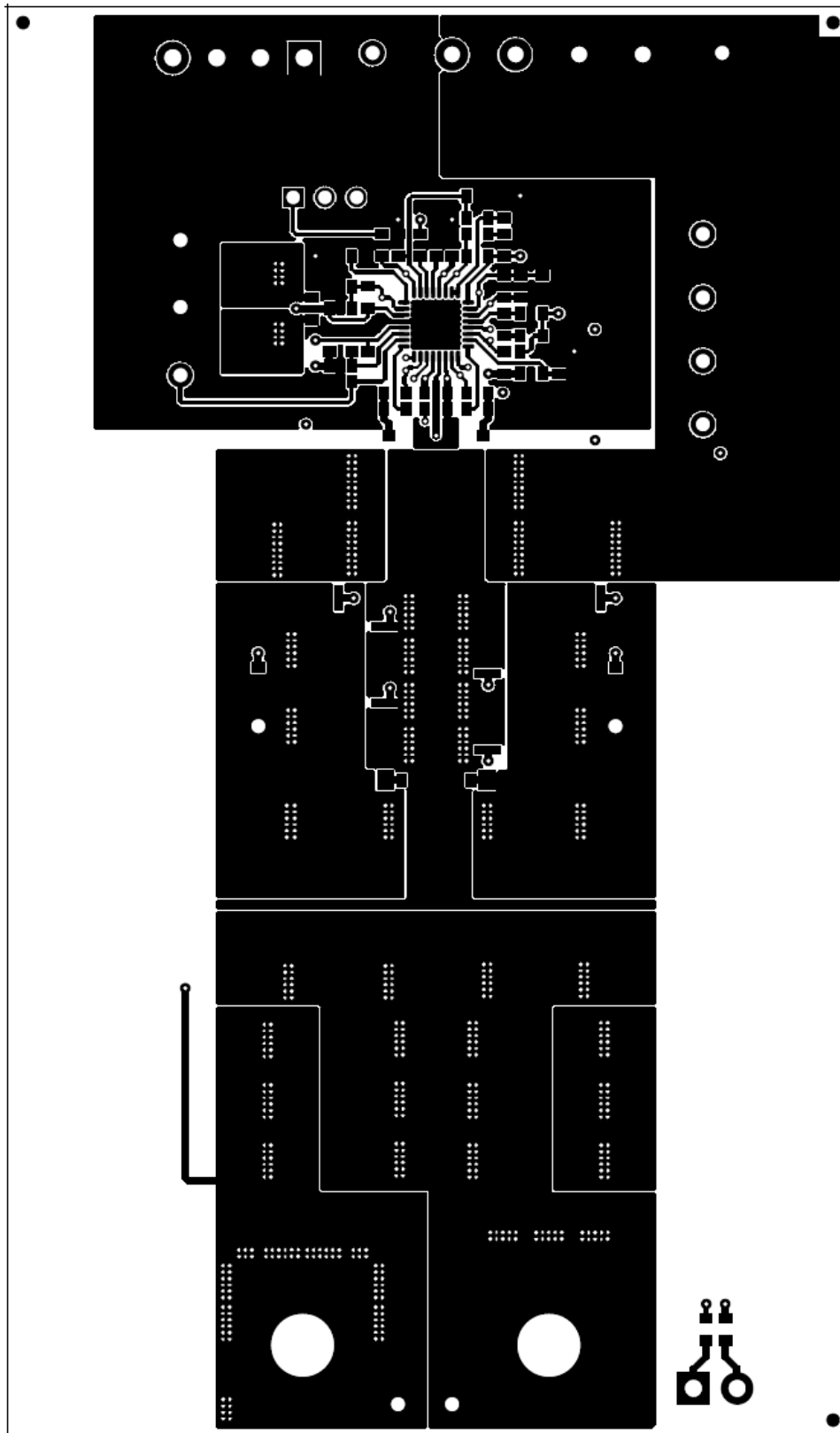


Figure 13. TPS40131EVM Top Copper (Viewed from Top)

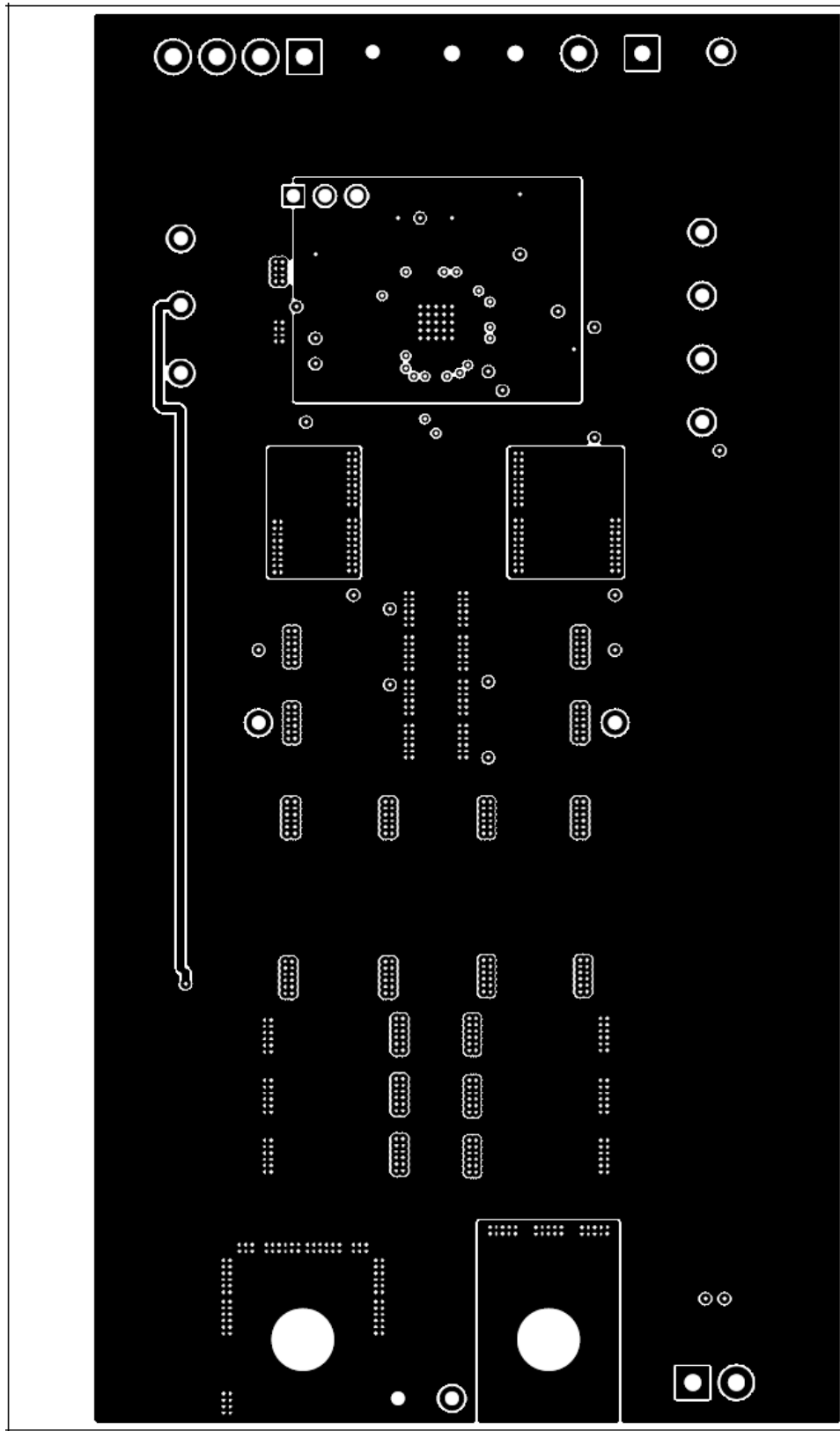


Figure 14. TPS40131EVM Layer 2 Copper (X-Ray View from Top)

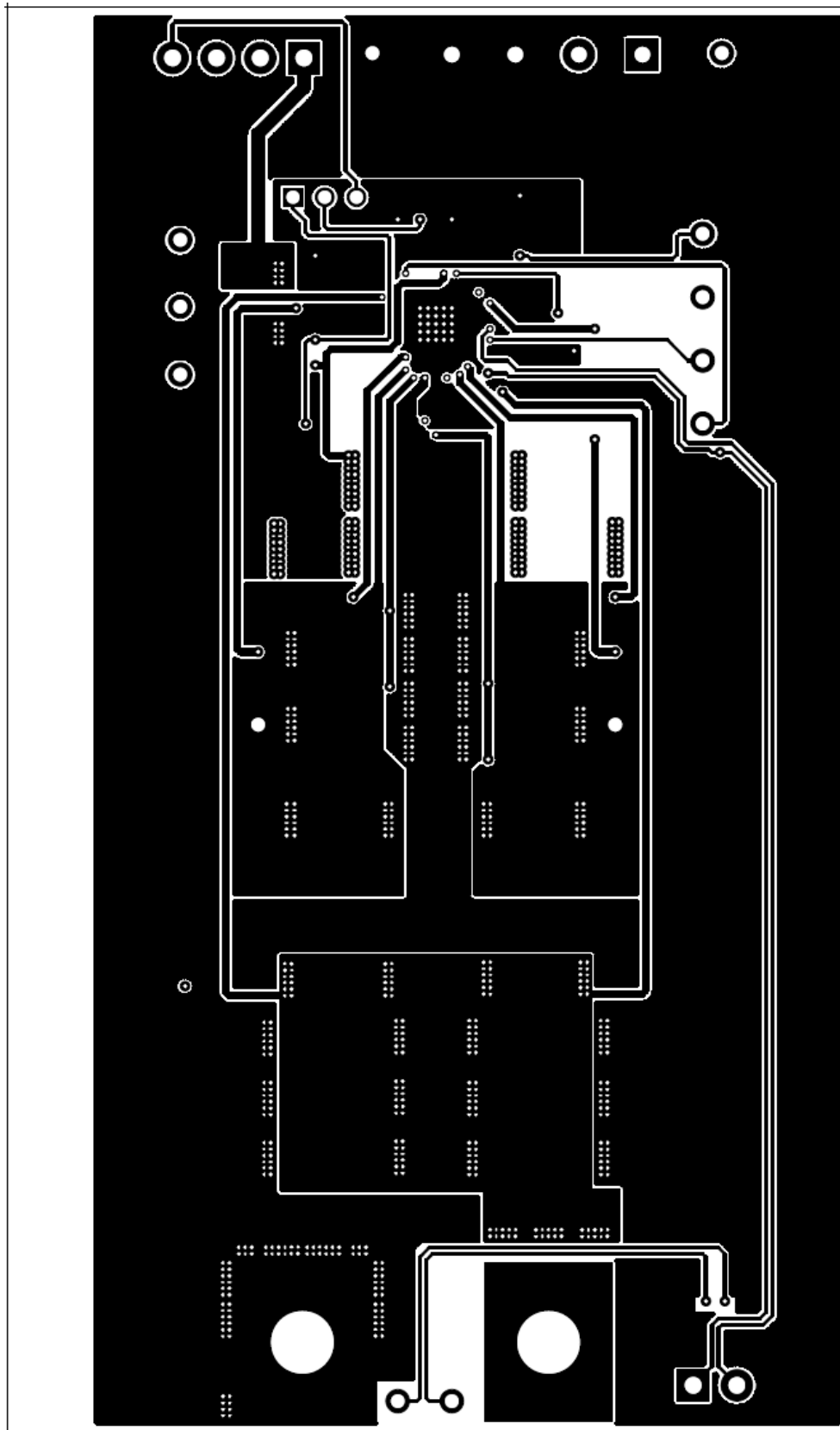


Figure 15. TPS40131EVM Layer 3 Copper (X-Ray View from Top)

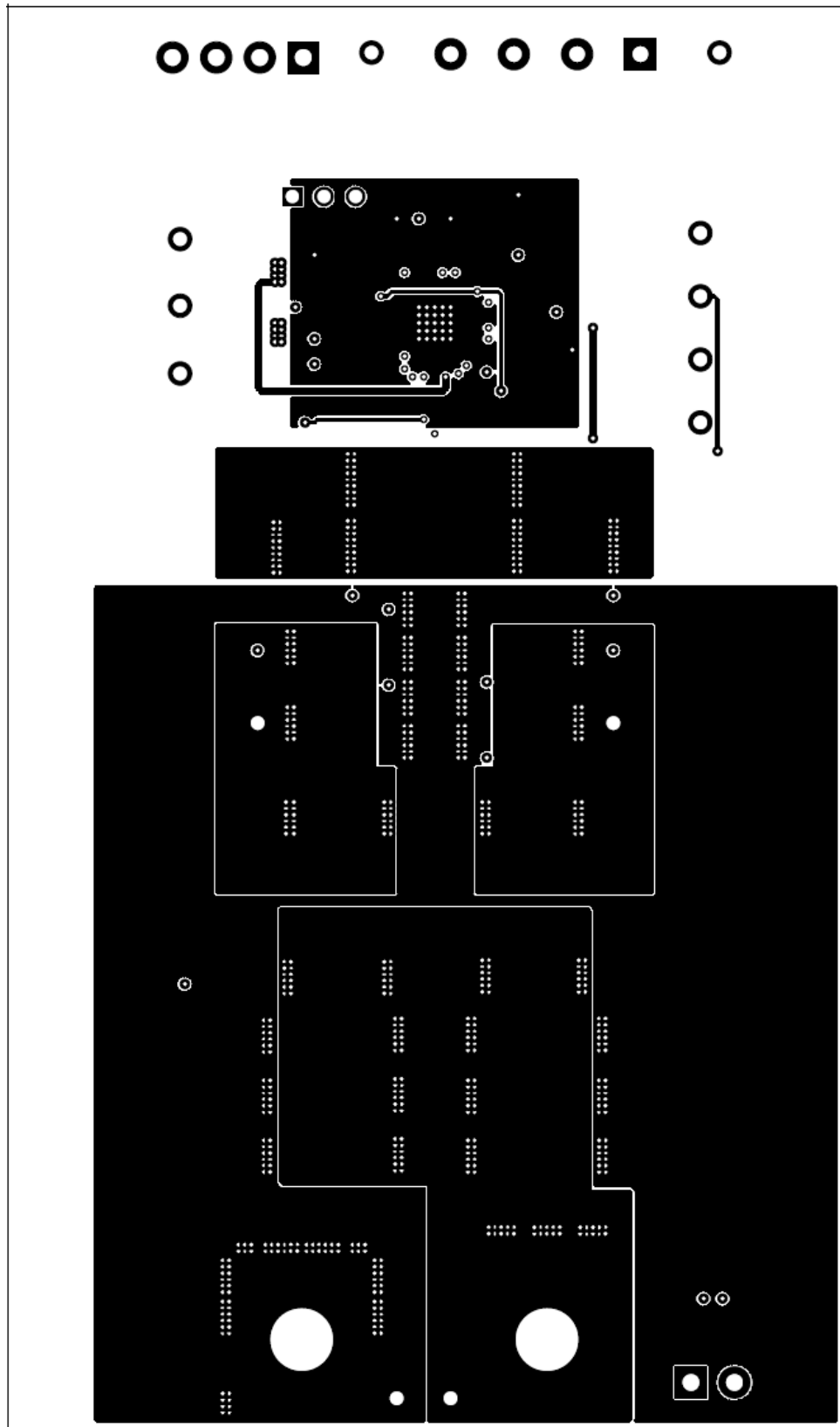


Figure 16. TPS40131EVM Bottom Copper (X-Ray View from Top)

8 List of Materials

Table 3 lists the EVM components as configured according to the schematic shown in Figure 1.

Table 3. TPS40131EVM Bill of Materials

Count	RefDes	Description	Part Number	MFR
6	C1, C2, C3, C18, C19, C34	Capacitor, Ceramic, 22- μ F, 16-V, X5R, 20%, 1210	Std	Std
11	C6, C10, C11, C20, C22, C24, C25, C26, C27, C30, C31	Capacitor, Ceramic, 0.1- μ F, 16-V, X7R, 10%, 0603	Std	Std
6	C12, C13, C14, C15, C16, C17	Capacitor, Aluminum-SE, 180- μ F, 6.3-V, 5-m Ω	EEF-SE0J181R	Panasonic
1	C23	Capacitor, Ceramic, 47- μ F, 6.3-V, X5R, 20%	C3225X5R0J476M	TDK
1	C28	Capacitor, Aluminum, 100- μ F, 16-V, \pm 20	EEVFK1C101P	Panasonic
1	C33	Capacitor, Ceramic, 0.022- μ F, 16-V, X7R, 10%, 0603	Std	Std
3	C4, C21, C32	Capacitor, Ceramic, 1- μ F, 6.3-V, X5R, 10%, 0603	Std	Std
1	C5	Capacitor, Ceramic, 47-pF, 16-V, X7R, 10%, 0603	Std	Std
1	C7	Capacitor, Ceramic, 4.7-nF, 16-V, X7R, 10%, 0603	Std	Std
2	C8, C29	Capacitor, Ceramic, 3.3-nF, 16-V, X7R, 10%, 0603	Std	Std
1	C9	Capacitor, Ceramic, 470-pF, 16-V, X7R, 10%, 0603	Std	Std
2	D1, D2	Diode, Schottky, 30-V, 0.35-Vf, SOD-323	BAT54HT1	On Semi
1	J1	Terminal Block, 4-pin, 15-A, 5,1-mm	ED2227	OST
1	J2	Terminal Block, 4-pin, 6-A, 3,5-mm	ED1516	OST
1	J3	Terminal Block, 2-pin, 6-A, 3,5mm	ED1514	OST
1	JP1	Header, 3-pin, 100-mil spacing, (36-pin strip)	PTC36SAAN	Sullins
2	L1, L2	Inductor, SMT, 0.82- μ H	IHLP-5050FD-01	Vishay
2	Q1, Q6	MOSFET, N-Ch, Vds 30V, Rds 4.2 m Ω , Id 40A	HAT2167H	Renesas
4	Q2, Q3, Q4, Q5	MOSFET, N-Ch, Vds 30V, Rds 2.5 m Ω , Id 60A	HAT2164H	Renesas
2	R1, R24	Resistor, Chip, 6.04-k Ω , 1%, 0603	Std	Std
2	R11, R19	Resistor, Chip, 2- Ω , 1%, 0603	Std	Std
2	R12, R13, R18	Resistor, Chip, 10- Ω , 1%, 0603	Std	Std
1	R14	Resistor, Chip, 4.02-k Ω , 1%, 0603	Std	Std
1	R16	Resistor, Chip, 5.1- Ω , 1%, 0603	Std	Std
0	R2, R23	Resistor, Chip, Open, 1%, 0603	Std	Std
1	R20	Resistor, Chip, 75-k Ω , 1%, 0603	Std	Std
1	R25	Resistor, Chip, 2.49-k Ω , 1%, 0603	Std	Std
1	R3	Resistor, Chip, 4.99-k Ω , 1%, 0603	Std	Std
2	R4, R21	Resistor, Chip, 1- Ω , 0805	Std	Std
5	R5, R10, R15, R17, R22	Resistor, Chip, 10-k Ω , 1%, 0603	Std	Std
1	R6	Resistor, Chip, 3-k Ω , 1%, 0603	Std	Std
1	R7	Resistor, Chip, 20- Ω , 1%, 0603	Std	Std
2	R8, R9	Resistor, Chip, 8.66-k Ω , 1%, 0603	Std	Std
1		Jumper, 0.1-inch, 2 contacts	2-382811-1	Tyco/AMP
9	TP1, TP3, TP4, TP5, TP6, TP7, TP9, TP10, TP13	Test Point, Red, Thru-Hole Color Keyed	5000	Keystone
4	TP2, TP8, TP11, TP12	Test Point, Black, Thru-Hole Color Keyed	5001	Keystone
1	U1	IC, 2-phase single output PWM controller, QFN	TPS40131RHB	TI
1	HPA220	PCB, 4.5 inch (114,3 mm) \times 2.7 inch (68,6 mm)	HPA220	

EVALUATION BOARD/KIT IMPORTANT NOTICE

Texas Instruments (TI) provides the enclosed product(s) under the following conditions:

This evaluation board/kit is intended for use for **ENGINEERING DEVELOPMENT, DEMONSTRATION, OR EVALUATION PURPOSES ONLY** and is not considered by TI to be a finished end-product fit for general consumer use. Persons handling the product(s) must have electronics training and observe good engineering practice standards. As such, the goods being provided are not intended to be complete in terms of required design-, marketing-, and/or manufacturing-related protective considerations, including product safety and environmental measures typically found in end products that incorporate such semiconductor components or circuit boards. This evaluation board/kit does not fall within the scope of the European Union directives regarding electromagnetic compatibility, restricted substances (RoHS), recycling (WEEE), FCC, CE or UL, and therefore may not meet the technical requirements of these directives or other related directives.

Should this evaluation board/kit not meet the specifications indicated in the User's Guide, the board/kit may be returned within 30 days from the date of delivery for a full refund. **THE FOREGOING WARRANTY IS THE EXCLUSIVE WARRANTY MADE BY SELLER TO BUYER AND IS IN LIEU OF ALL OTHER WARRANTIES, EXPRESSED, IMPLIED, OR STATUTORY, INCLUDING ANY WARRANTY OF MERCHANTABILITY OR FITNESS FOR ANY PARTICULAR PURPOSE.**

The user assumes all responsibility and liability for proper and safe handling of the goods. Further, the user indemnifies TI from all claims arising from the handling or use of the goods. Due to the open construction of the product, it is the user's responsibility to take any and all appropriate precautions with regard to electrostatic discharge.

EXCEPT TO THE EXTENT OF THE INDEMNITY SET FORTH ABOVE, NEITHER PARTY SHALL BE LIABLE TO THE OTHER FOR ANY INDIRECT, SPECIAL, INCIDENTAL, OR CONSEQUENTIAL DAMAGES.

TI currently deals with a variety of customers for products, and therefore our arrangement with the user **is not exclusive.**

TI assumes **no liability for applications assistance, customer product design, software performance, or infringement of patents or services described herein.**

Please read the User's Guide and, specifically, the Warnings and Restrictions notice in the User's Guide prior to handling the product. This notice contains important safety information about temperatures and voltages. For additional information on TI's environmental and/or safety programs, please contact the TI application engineer or visit www.ti.com/esh.

No license is granted under any patent right or other intellectual property right of TI covering or relating to any machine, process, or combination in which such TI products or services might be or are used.

FCC Warning

This evaluation board/kit is intended for use for **ENGINEERING DEVELOPMENT, DEMONSTRATION, OR EVALUATION PURPOSES ONLY** and is not considered by TI to be a finished end-product fit for general consumer use. It generates, uses, and can radiate radio frequency energy and has not been tested for compliance with the limits of computing devices pursuant to part 15 of FCC rules, which are designed to provide reasonable protection against radio frequency interference. Operation of this equipment in other environments may cause interference with radio communications, in which case the user at his own expense will be required to take whatever measures may be required to correct this interference.

EVM WARNINGS AND RESTRICTIONS

It is important to operate this EVM within the input voltage range of 10.8 V to 13.2 V, and the output voltage range of 1.5 V at 40 A. Exceeding the specified input range may cause unexpected operation and/or irreversible damage to the EVM. If there are questions concerning the input range, please contact a TI field representative prior to connecting the input power.

Applying loads outside of the specified output range may result in unintended operation and/or possible permanent damage to the EVM. Please consult the EVM User's Guide prior to connecting any load to the EVM output. If there is uncertainty as to the load specification, please contact a TI field representative.

During normal operation, some circuit components may have case temperatures greater than 70°C. The EVM is designed to operate properly with certain components above 70°C as long as the input and output ranges are maintained. These components include but are not limited to, switching transistors, inductor, and IC. These types of devices can be identified using the EVM schematic located in the EVM User's Guide. When placing measurement probes near these devices during operation, please be aware that these devices may be very warm to the touch.

Mailing Address: Texas Instruments, Post Office Box 655303, Dallas, Texas 75265
Copyright © 2007, Texas Instruments Incorporated

IMPORTANT NOTICE

Texas Instruments Incorporated and its subsidiaries (TI) reserve the right to make corrections, modifications, enhancements, improvements, and other changes to its products and services at any time and to discontinue any product or service without notice. Customers should obtain the latest relevant information before placing orders and should verify that such information is current and complete. All products are sold subject to TI's terms and conditions of sale supplied at the time of order acknowledgment.

TI warrants performance of its hardware products to the specifications applicable at the time of sale in accordance with TI's standard warranty. Testing and other quality control techniques are used to the extent TI deems necessary to support this warranty. Except where mandated by government requirements, testing of all parameters of each product is not necessarily performed.

TI assumes no liability for applications assistance or customer product design. Customers are responsible for their products and applications using TI components. To minimize the risks associated with customer products and applications, customers should provide adequate design and operating safeguards.

TI does not warrant or represent that any license, either express or implied, is granted under any TI patent right, copyright, mask work right, or other TI intellectual property right relating to any combination, machine, or process in which TI products or services are used. Information published by TI regarding third-party products or services does not constitute a license from TI to use such products or services or a warranty or endorsement thereof. Use of such information may require a license from a third party under the patents or other intellectual property of the third party, or a license from TI under the patents or other intellectual property of TI.

Reproduction of information in TI data books or data sheets is permissible only if reproduction is without alteration and is accompanied by all associated warranties, conditions, limitations, and notices. Reproduction of this information with alteration is an unfair and deceptive business practice. TI is not responsible or liable for such altered documentation.

Resale of TI products or services with statements different from or beyond the parameters stated by TI for that product or service voids all express and any implied warranties for the associated TI product or service and is an unfair and deceptive business practice. TI is not responsible or liable for any such statements.

TI products are not authorized for use in safety-critical applications (such as life support) where a failure of the TI product would reasonably be expected to cause severe personal injury or death, unless officers of the parties have executed an agreement specifically governing such use. Buyers represent that they have all necessary expertise in the safety and regulatory ramifications of their applications, and acknowledge and agree that they are solely responsible for all legal, regulatory and safety-related requirements concerning their products and any use of TI products in such safety-critical applications, notwithstanding any applications-related information or support that may be provided by TI. Further, Buyers must fully indemnify TI and its representatives against any damages arising out of the use of TI products in such safety-critical applications.

TI products are neither designed nor intended for use in military/aerospace applications or environments unless the TI products are specifically designated by TI as military-grade or "enhanced plastic." Only products designated by TI as military-grade meet military specifications. Buyers acknowledge and agree that any such use of TI products which TI has not designated as military-grade is solely at the Buyer's risk, and that they are solely responsible for compliance with all legal and regulatory requirements in connection with such use.

TI products are neither designed nor intended for use in automotive applications or environments unless the specific TI products are designated by TI as compliant with ISO/TS 16949 requirements. Buyers acknowledge and agree that, if they use any non-designated products in automotive applications, TI will not be responsible for any failure to meet such requirements.

Following are URLs where you can obtain information on other Texas Instruments products and application solutions:

Products		Applications	
Amplifiers	amplifier.ti.com	Audio	www.ti.com/audio
Data Converters	dataconverter.ti.com	Automotive	www.ti.com/automotive
DSP	dsp.ti.com	Broadband	www.ti.com/broadband
Interface	interface.ti.com	Digital Control	www.ti.com/digitalcontrol
Logic	logic.ti.com	Military	www.ti.com/military
Power Mgmt	power.ti.com	Optical Networking	www.ti.com/opticalnetwork
Microcontrollers	microcontroller.ti.com	Security	www.ti.com/security
RFID	www.ti-rfid.com	Telephony	www.ti.com/telephony
Low Power Wireless	www.ti.com/lpw	Video & Imaging	www.ti.com/video
		Wireless	www.ti.com/wireless

Mailing Address: Texas Instruments, Post Office Box 655303, Dallas, Texas 75265
Copyright © 2007, Texas Instruments Incorporated