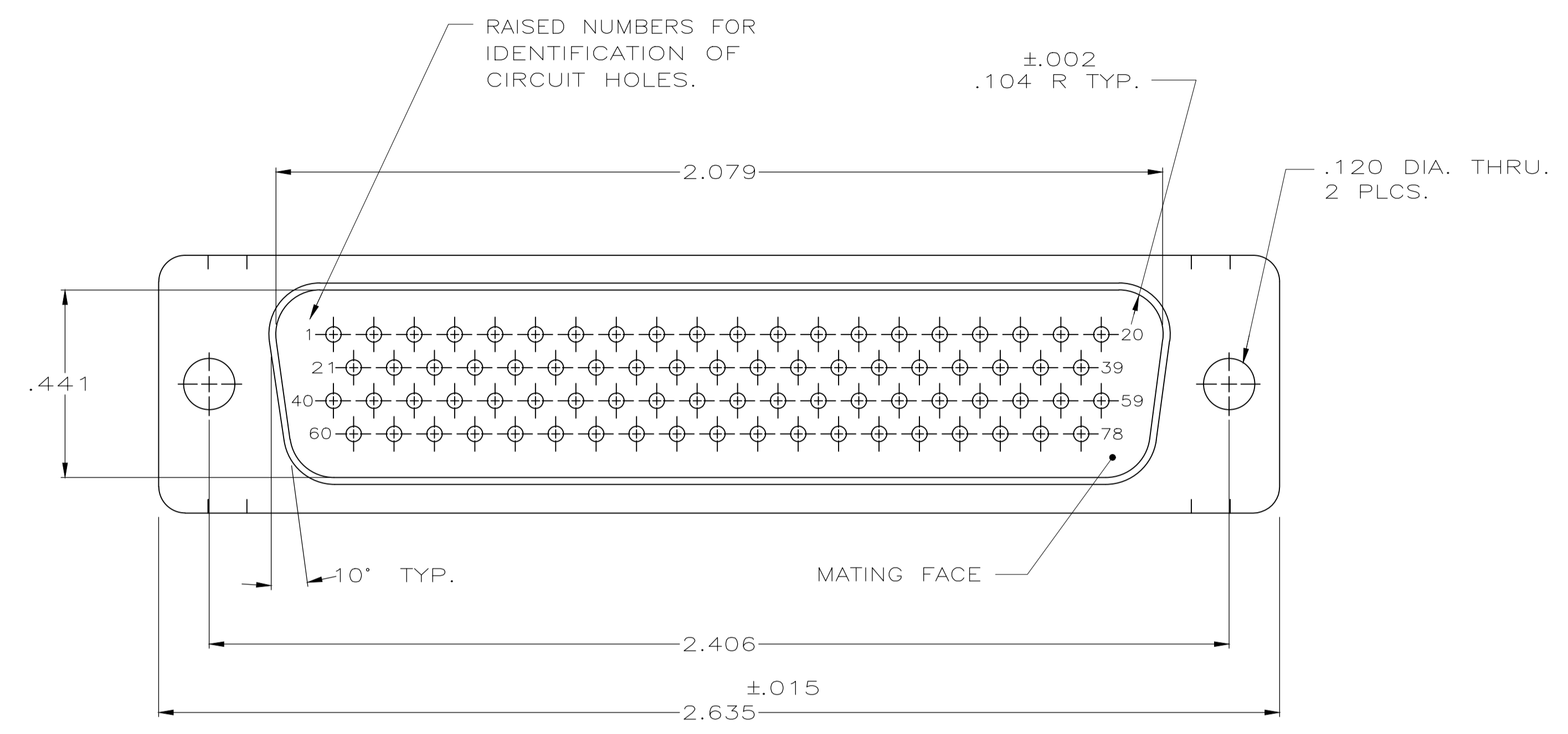
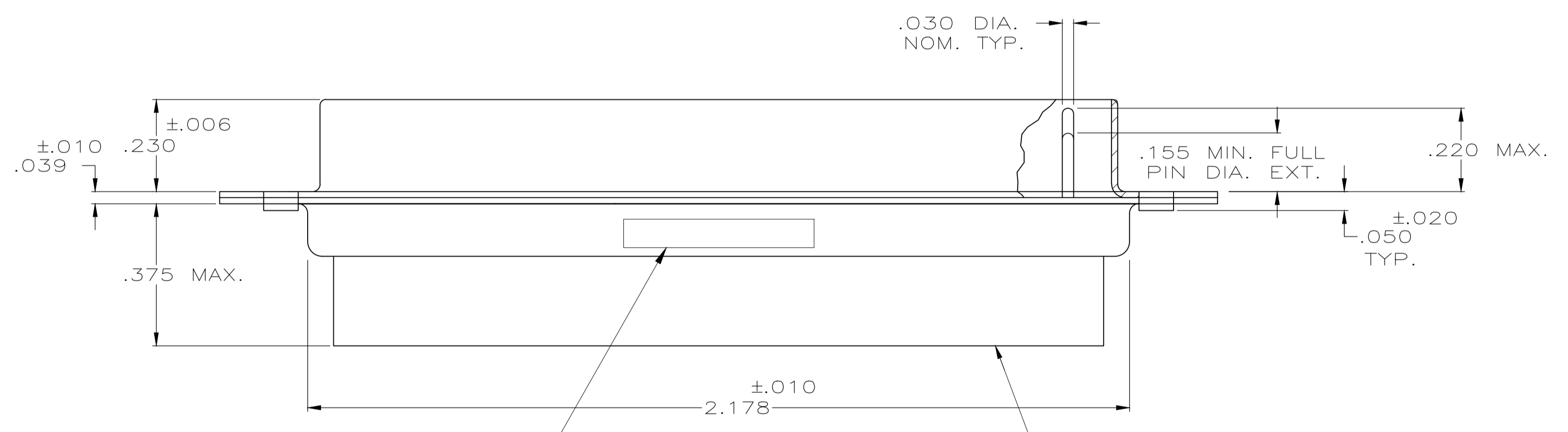


REVISIONS					
P	LTR	DESCRIPTION	DATE	DMN	APVD
D		REV PER ECO 19-016079	12-11-19	CT	DM

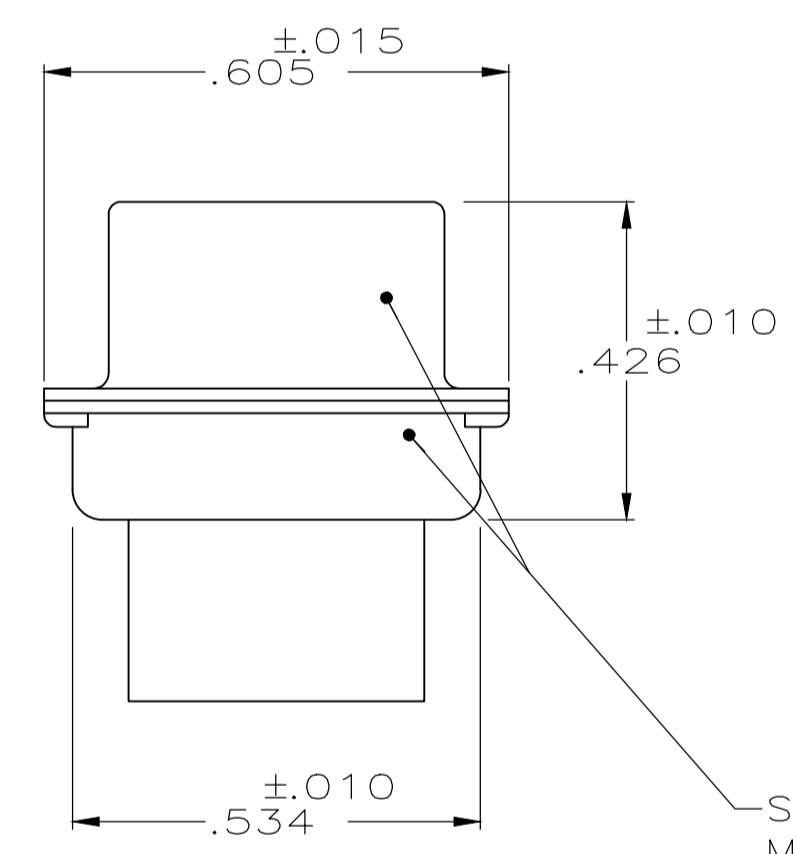


- THIS PLUG WILL MATE WITH ANY SIZE 5,78 POSN.. RCPT. IN AMPLIMITE SERIES.
 - CONNECTOR SUPPLIED WITHOUT CONTACTS; SHOWN FOR ILLUSTRATION ONLY.
 - BE-CU RETENTION CLIPS ARE INCLUDED IN INSERTS AND INSTALLED WITH TINES POINTING TOWARDS MATING FACE.
 - OVERALL DIMENSIONS DO NOT INCLUDE RAISED CAVITY IDENTIFICATION.
 - MARKING FAR SIDE REFERS TO WIDE SIDE OF KEYSTONE. NEAR SIDE REFERS TO NARROW SIDE OF KEYSTONE.
- △ 100% INSPECTION REQUIRED PER BOEING 1B01:
 A. VISUAL
 B. DWV
 C. IR
7. CUSTOMER REQUIRES SINGLE LOT DATE CODE.



CUSTOMER P/N (IF APPLICABLE) MARKED ON FAR SIDE.
 MANUFACTURER'S NAME, BRAND NAME OR LOGO AND MANUFACTURER'S PART NO AND DATE CODE MARKED ON NEAR SIDE

INSERT ASSEMBLY
 MAT'L: DIALLYL PHTHALATE PER MIL-M-14, CLASS SDG-F
 COLOR: BLACK
 OR POLYPHENYLENE SULFIDE (PPS) PER MIL-M-24519, TYPE GST-40F.



SHELL, FRONT & REAR
 MAT'L: BRASS PER ASTM B-19
 FINISH: GOLD PLATED PER ASTM-B-488 OVER 0.000100
 MIN COPPER PER AMS 2418

△ 6	1B01 - 011PHW	1-211653-1
△ 6	1B01 - 011	211653-1
REMARKS	CUSTOMER MARKING	PART NO.

THIS DRAWING IS A CONTROLLED DOCUMENT.		DIN 3/26/84		D. ERDMAN	
DIMENSIONS: INCHES		TOLERANCES UNLESS OTHERWISE SPECIFIED:		C/K 4-26-84	
0 PLC ± -		1 PLC ± -		B. YOHN 6-29-84	
1 PLC ± -		2 PLC ± -		APVD J. BROSCARD	
2 PLC ± -		3 PLC ± .005		NAME	
3 PLC ± -		4 PLC ± -		PRODUCT SPEC	
4 PLC ± -		ANGLES ± 0°30'		APPLICATION SPEC	
MATERIAL SEE CALLOUT		FINISH SEE CALLOUT		SIZE CAGE CODE DRAWING NO	
		WEIGHT 0.000000		A1 00779 C=211653	
		CUSTOMER DRAWING		SCALE NTS SHEET 1 OF 1 REV D	