

EMI/EMC FILTER

RoHS

CN SERIES



Features

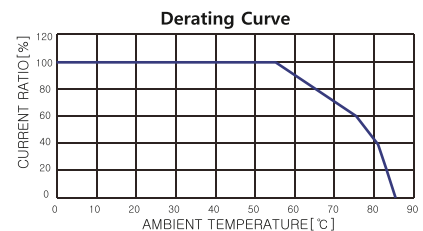
- General purpose low cost plastic case
- Varieties in circuit and component for right selection
- Good filtering characteristics for both differential mode and common mode
- Epoxy molded for reliability

Applications

- Battery, ESS equipments
- Personal computers and peripherals
- Digital equipments, battery, ESS equipments
- For industrial equipments
- For vending machines and OA equipments

Specifications

Model	Rated Voltage (AC, DC)	Rated Current	Leakage Current (250V AC)	Operating Temperature
CN2-F30	250V (50/60Hz)	3A	0.5mA max.	-25°C to +85°C Including temperature rise
CN2-F60		6A		



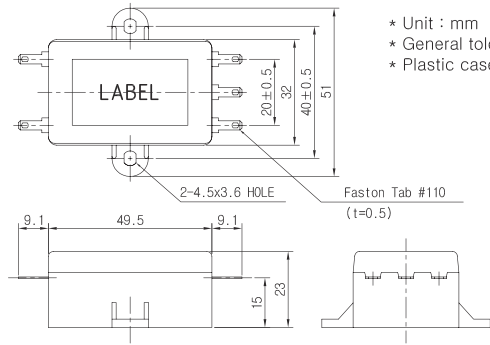
Note

Test Voltage : 1500V AC one minute, line to earth
 Insulation Resistance : 300 Mohm min. at 500V DC
 Voltage Drop : 1V max. (except CN3-*10*) at rated current
 Weight : 60g

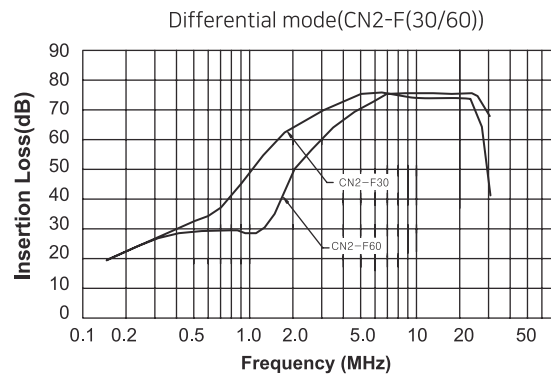
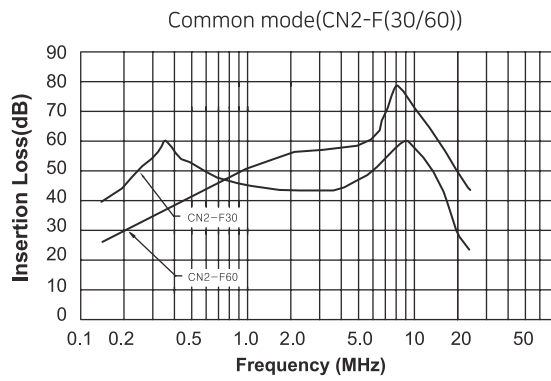
Model Number Construction

CN	2	F	10	1
Series Description Screw Mounting/ Plastic Case	Circuit : See Circuit Diagram on next page	Input/Output Terminal F : Faston Tab #110 H : Faston Tab #250	Current Rating : AC rms 10 : 1amp(CN3 Only) 20 : 2amp 30 : 3amp 60 : 6amp(CN1, 2 Only)	Line-Line Cap.Value 2 : 0.22 μF(with resistor) 4 : 0.47 μF(with resistor) None : 0.1 μF(without resistor)

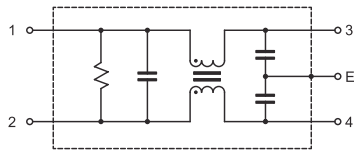
CN*-F**



Attenuation Characteristics

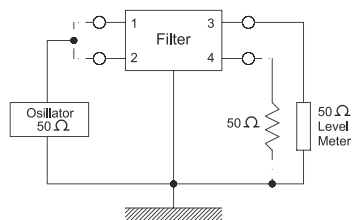


Circuit Diagram

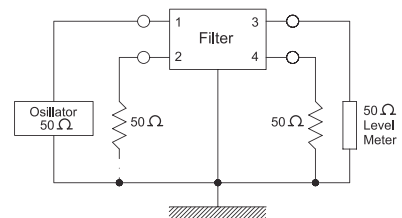


CN2 Series

Measurement Configuration



Common mode



Differential mode