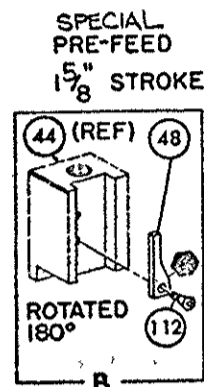
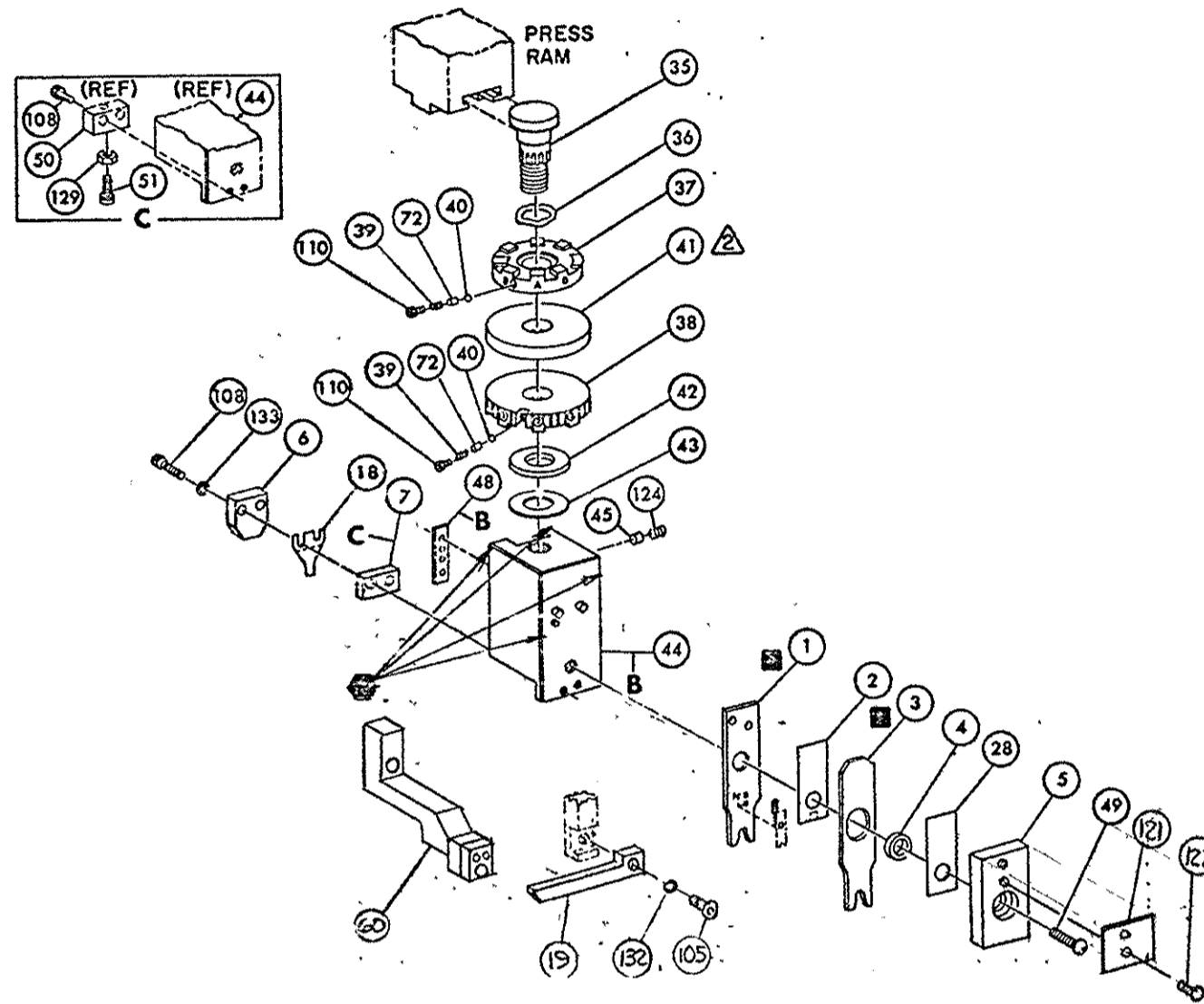


THIS DRAWING IS A CONTROLLED DOCUMENT FOR AMP INCORPORATED. IT IS SUBJECT TO CHANGE AND THE CONTROLLING ENGINEERING ORGANIZATION SHOULD BE CONTACTED FOR THE LATEST REVISION.

THIS IS A CONTROLLED DOCUMENT.



**NOTES:**

1- ONLY THE ITEMS WITH QUANTITIES SPECIFIED ON PARTS LIST ARE USED ON THIS APPLICATOR.

△ USED IN PLACE OF ITEM 38 WHEN INSULATION CRIMP IS NOT USED.

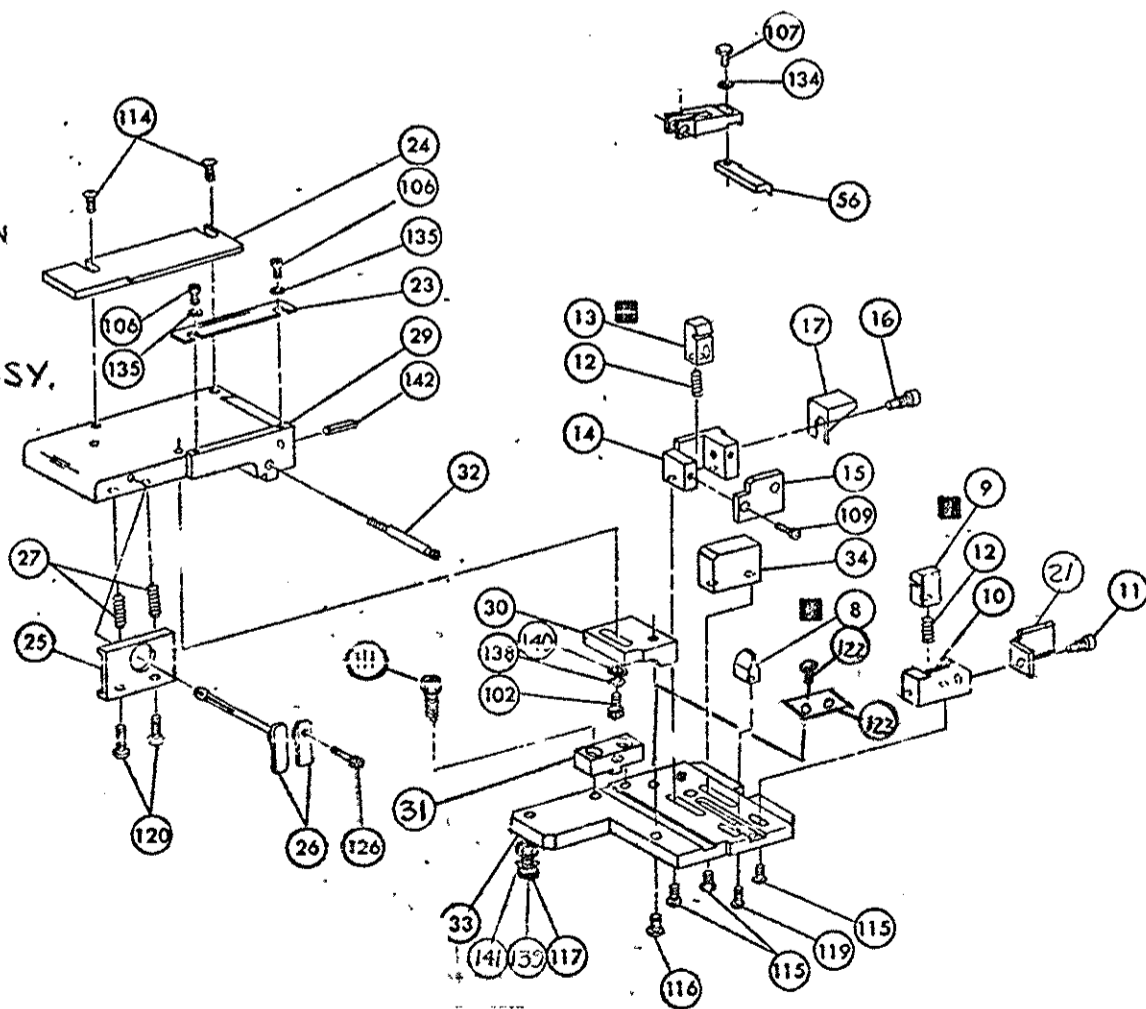
3-FEED PIVOT- BOTTOM HOLE

△ CUT TO LENGTH AT ASSY.

**KEY:**

☐ RECOMMENDED SPARE PARTS CUSTOMER RESPONSIBLE FOR REPLACEMENT.

☑ GREASE WEEKLY



QTY	PART NO	DESCRIPTION	ITEM NO	REV	QTY	PART NO	DESCRIPTION	ITEM NO
1	4-21028-0	PIN, SLOT SPR (.093 DIA X .75) STR G PLATE	142	REF	694433-8	PAWL FEED	56	
1	21899-2	WASHER, FLAT (NO 10) MOUNTING	141				55	
1	21899-2	WASHER, FLAT (NO 10) S. G. ADJ BLOCK	140				54	
1	21024-5	WASHER, LOCK (NO 10) MOUNTING	139				53	
1	21024-5	WASHER, LOCK (NO 10) STRIP GUIDE ADJ BLOCK	138				52	
			137				51	
			136				50	
2	21057-2	WASHER, LOCK (NO 4) FRONT STRIP GUIDE	135	1	7-21002-9	BOLT, CRIMPER (BUT. HD. 5/16-24 UNF X 1.00)	49	
REF	21024-4	WASHER, LOCK (NO 8) FEED FINGER	134	1	690602-6	CAM PRE FEED 1.6Z STROKE	48	
2	21024-4	WASHER, LOCK (NO 8) DEPRESSOR	133				47	
REF	21024-4	WASHER, LOCK (NO 8) STRIPPER	132				46	
			131	1	690191-1	PLUG, NYLON	45	
			130	1	455673-1	RAM	44	
			129	1	690125-1	WASHER, LAMINATED	43	
			128	1	690124-1	WASHER, RAM	42	
			127			DISC, SPACER	41	
			126	2	23241-6	BALL, STEEL	40	
			125	2	690170-1	SPRING, COMPRESSION	39	
1	21009-2	SCR, SKT SET (1/4-20 X .25) (LOC-WEL) RAM	124	1	690142-1	DISC, INSULATION	38	
1	690701-2	PLATE, SERIAL NO	123	1	9-690692-9	DISC, WIRE	37	
4	21017-2	SCR, DRIVE (#2 X 1.88 LG)	122	1	22480-5	WASHER, SPRING	36	
1	819247-1	PLATE, I.D.	121	1	690212-1	POST, RAM	35	
2	2-21002-9	SCR, BUT HD SKT CAP (10-32 X .75) DRAG	120			SUPPORT, TERMINAL	34	
1	22733-8	SCR, BUT HD SKT CAP (8-32 X .38) (LOC-WEL) ANVIL	119	1	462544-1	PLATE, BASE SPECIAL	33	
			118	1	690432-3	SCREW, ADJUSTMENT	32	
1	3-21000-9	SCR, SOC HD SKT CAP (10-32 X 1.00) MOUNTING	117	1	462543-1	BLOCK, SCREW SPECIAL	31	
1	2-22733-1	SCR, BUT HD SKT CAP (10-32 X .50) SG ADJ BLOCK	116	1	455689-1	BLOCK, STRIP GUIDE ADJ	30	
4	22733-9	SCR, BUT HD SKT CAP (8-32 X .50) SHEAR	115	1	455671-2	PLATE, STRIP GUIDE	29	
2	2-21002-2	SCR, BUT HD SKT CAP (8-32 X .50) R STRIP GUIDE	114	1	1-455888-0	SPACER, FRONT SHEAR DEPRESSOR	28	
			113	2	1-22284-1	SPRING, DRAG	27	
1	1-21002-7	SCR, BUT HD SKT CAP (6-32 X .50) CAM	112	1	690546-1	LEVER, DRAG RELEASE	26	
2	2-21000-1	SCR, SKT HD CAP (8-32 X .50) SCR. BLOCK	111	1	240792-1	DRAG, STOCK	25	
2	23030-1	SCR, SKT HD CAP (6-32 X .25) (LOC-WEL) CP DISC	110	1	856873-1	GUIDE STRIP (REAR)	24	
2	1-21000-8	SCR, SKT HD CAP (6-32 X .25) REAR SHEAR PLATE	109	1	690438-1	GUIDE, STRIP (FRONT)	23	
REF	3-21000-0	SCR, SKT HD CAP (8-32 X .38) DEPRESSOR (REAR)	108				22	
2	2-21002-1	SCR, BUT HD SKT CAP (8-32 X .38) FEED FINGER	107	1	463756-1	GUIDE SCRAP	21	
2	1-21000-3	SCR, SKT HD CAP (4-40 X .25) F STRIP GUIDE	106				20	
REF	2-21002-1	SCR, BUT HD CAP (8-32 X .38) STRIPPER	105	1	462615-4	STRIPPER	19	
			104	1	1-690518-9	HOLDER, TERMINAL	18	
			103	1	691668-1	GUARD CHIP (REAR)	17	
1	3-22603-1	SCR, HEX HD CAP (10-32 X .38) SG ADJ BLOCK	102	1	690461-1	STOP, SHEAR (REAR)	16	
			101	1	690691-9	PLATE, SHEAR (REAR)	15	
			79	1	681023-1	HOLDER, SHEAR (REAR)	14	
			78	1	690463-1	SHEAR, FLOAT (REAR)	13	
2	463310-4	BLADE, STRIPPING (#18)	77	2	5-22280-0	SPRING, SHEAR	12	
			76	1	690461-2	STOP, SHEAR (FRONT)	11	
			75	1	462548-1	HOLDER, SHEAR (FRONT) SPECIAL	10	
			74	1	462547-1	SHEAR, FLOAT (FRONT) SPECIAL	9	
			73	1	7-690471-0	ANVIL	8	
1	690603-1	SPRING, ASSIST	72	1	6-240641-8	SPACER, DEPRESSOR (REAR)	7	
			71	1	690468-1	DEPRESSOR, SHEAR (REAR)	6	
			70	1	462838-1	DEPRESSOR, SHEAR (FRONT) SPECIAL	5	
			69	1	2-238011-2	SPACER, TUBULAR, INS CRIMPER	4	
			68	1	4-456135-4	CRIMPER, INSULATION	3	
			67	1	4-55888-3	SPACER, CRIMPER	2	
			66	1	2-456403-0	CRIMPER, WIRE	1	

CRIMPING DATA				APPLICATOR WILL APPLY	
PAD LTR	CRIMP HEIGHT	WIRE SIZE	STRIP LENGTH		
A	.037	22		583649	
B	NOT USED			530235	
C	.046	18		531478	
D	.040	20 or 0.50mm		531482	
CRIMP	SIZE	TYPE	FEED	APPL INST	
WIRE	.062	F		A1	
INSUL	.096	O	.330		
WIRE RANGE	22-18	INSULATION RANGE	PRESS NO		
			463345-1		

REMARKS	NO	REV
APPL USED ON MACHINE PART NO	MACH SERIAL NO	DISTRIBUTION
CUSTOMER NAME	APPL SERIAL NO	ORIGINAL
ADDRESS	PURCHASE ORDER	CUSTOMER COPY
CITY	ENG APP	FIELD ENG COPY

REV	DATE	DESCRIPTION	APP'D	DATE	DESCRIPTION	APP'D
KI	0130-0704-02	REV PER ECN R2708				
K	0150-785-37	REV PER ECN R2975				
EC	0150-4416-93	REV PER ECN R2753				
ECN	A-045085	REV PER ECN R2708				
ECN	R-06696	REV PER ECN R2708				
ECN	R-3745	REV PER ECN R2708				

466928-1