

MATED VIEW  
10-WAFER CONNECTOR SHOWN

NOTES:

- MATERIALS:  
RETAINER HOUSING/WAFER PLASTIC - LIQUID CRYSTAL POLYMER (LCP),  
GLASS FILLED, UL94 V-0. COLOR: BLACK (30µin Au) OR GRAY (50µin Au)  
TERMINALS - HIGH PERFORMANCE COPPER ALLOY
- FINISHES:  
TERMINAL - SELECTIVE GOLD (Au) IN CONTACT AREA,  
SELECTIVE MATTE TIN (Sn) ON PCB TAILS,  
NICKEL (Ni) UNDERPLATE OVERALL
- PRODUCT SPECIFICATION: PS-74031-999
- PACKAGING SPECIFICATION: PK-70873-0750
- MATES WITH VHDM 8-ROW BACKPLANE HEADER SERIES NO. 74060
- THESE PARTS CONFORM TO MOLEX COSMETIC SPECIFICATION PS-45499-002 CLASS B.

MATERIAL NUMBER ASSIGNMENT

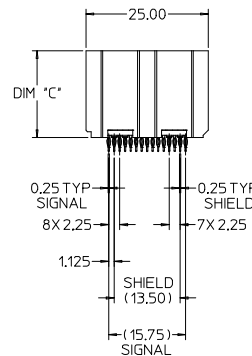
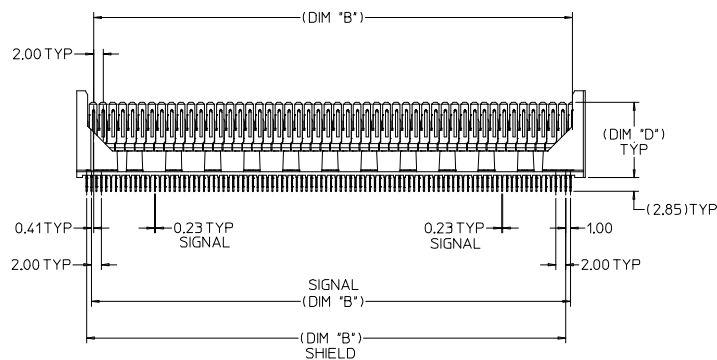
75117 - \* \* \* \*

GOLD THICKNESS/TAIL PLATING

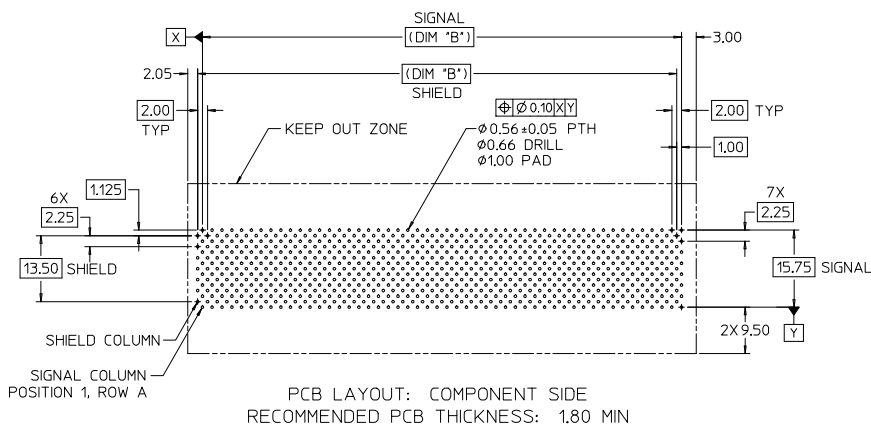
- 0 = 30µm / MATTE TIN (FORMERLY TIN/LEAD)
- 1 = 50µm / MATTE TIN (FORMERLY TIN/LEAD)
- 7 = 10µm/MATTE TIN (MAPS)
- 8 = 50µm/MATTE TIN
- 9 = 30µm/MATTE TIN

STACK HEIGHT  
DIM "H"  
18 = 18mm  
\* 28 = 28mm

\* CONSULT FACTORY FOR AVAILABILITY  
NUMBER OF WAFERS  
0 = 50  
1 = 10  
2 = 25



LEAD FREE  
PLATING



MATERIAL NUMBER	NUMBER OF WAFERS	DIM 'A'	DIM 'B'	DIM 'C'	DIM 'D'	DIM 'H' STACK HEIGHT
*75117-*228	25	54.05	48.00	27.74	25.36	28
*75117-*128	10	24.05	18.00			
*75117-*028	50	104.05	98.00	17.74	15.36	18
75117-*218	25	54.05	48.00			
75117-*118	10	24.05	18.00			
75117-*018	50	104.05	98.00			

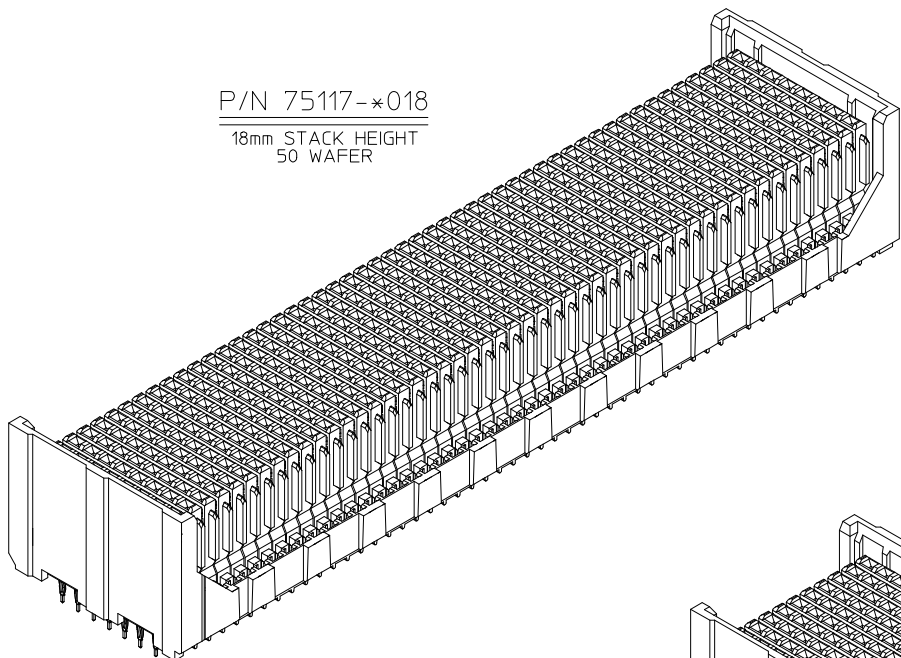
\* CONSULT FACTORY FOR AVAILABILITY

L.F. CONVERSION /MAPS E.C. NO: UCP2013-3702 DRAWN BY: DRYNWRHPPLP CHECKED BY: CHYKHMOLEF APPROVED BY: APPRSHILLER DATE: 2013/02/07 DATE: 2014/02/05 DESCRIPTION:	QUALITY SYMBOLS	GENERAL TOLERANCES (UNLESS SPECIFIED)	DIMENSION STYLE	SCALE	DESIGN UNITS	THIRD ANGLE PROJECTION	
	▽=0	mm INCH	MM ONLY	2:1	METRIC		
	▽=0	4 PLACES ± --- ± ---	DRAWN BY: SREED	DATE: 2013/02/27	TITLE: VHDM 8-ROW DAUGHTERCARD STACKER CONNECTOR SALES DRAWING		
	▽=0	3 PLACES ± --- ± --- 2 PLACES ± 0.13 ± --- 1 PLACE ± 0.25 ± --- 0 PLACE ± ±	CHECKED BY: JBI NINGHAM	DATE: 2013/02/27	molex		
	ANGULAR ± 2 °	DRAFT WHERE APPLICABLE MUST REMAIN WITHIN DIMENSIONS	MATERIAL NO. SEE CHART	DOCUMENT NO. SD-75117-001	SHEET NO. 1 OF 2		
THIS DRAWING CONTAINS INFORMATION THAT IS PROPRIETARY TO MOLEX INCORPORATED AND SHOULD NOT BE USED WITHOUT WRITTEN PERMISSION							

20 19 18 17 16 15 14 13 12 11 10 9 8 7 6 5 4 3 2 1

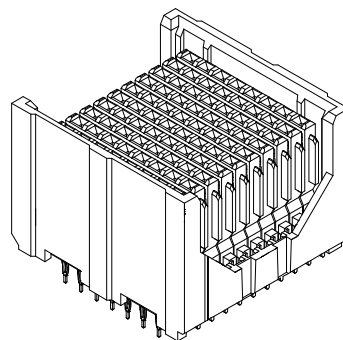
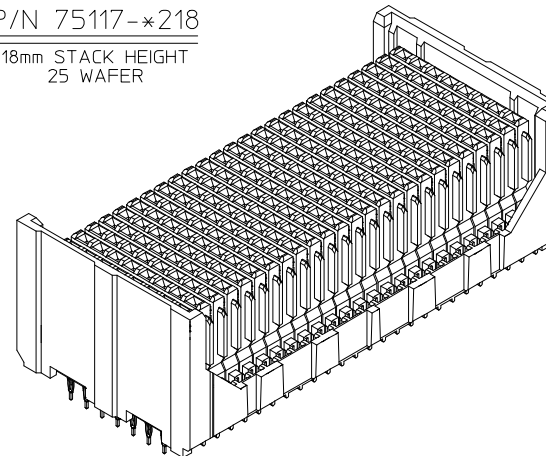
P/N 75117-\*018

18mm STACK HEIGHT  
50 WAFER



P/N 75117-\*218

18mm STACK HEIGHT  
25 WAFER

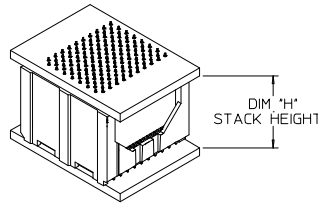
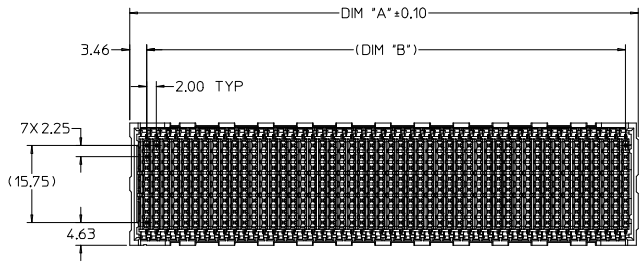


P/N 75117-\*118

18mm STACK HEIGHT  
10 WAFER

<b>LEAD FREE CONVERSION</b> IEC NO: UCP2013-3702 DRAWN BY: CHYKWHIPPLE 2013/02/07 CHECKED BY: CHYKWHIPPLE 2013/02/07 APPROVED BY: APPR:SMILLER 2014/02/05 REV:	QUALITY SYMBOLS	GENERAL TOLERANCES (UNLESS SPECIFIED)	DIMENSION STYLE	SCALE	DESIGN UNITS	THIRD ANGLE PROJECTION
	▽=0	4 PLACES ± mm ± INCH	MM ONLY	4:1	METRIC	
	▽=0	3 PLACES ± 0.13 ± ---				
	▽=0	2 PLACES ± 0.25 ± ---				
		ANGULAR ± 2 °	DRAWN BY: SREED DATE: 2003/02/27	TITLE: VHDM 8-ROW DAUGHTERCARD STACKER CONNECTOR SALES DRAWING		
		DRAFT WHERE APPLICABLE MUST REMAIN WITHIN DIMENSIONS	CHECKED BY: JB INGHAM DATE: 2003/02/27	DOCUMENT NO. SD-75117-001		
			APPROVED BY: CBIXLER DATE: 2003/02/27	SHEET NO. 2 OF 2		
			MATERIAL NO. SEE CHART	THIS DRAWING CONTAINS INFORMATION THAT IS PROPRIETARY TO MOLEX INCORPORATED AND SHOULD NOT BE USED WITHOUT WRITTEN PERMISSION		

19 18 17 16 15 14 13 12 11 10 9 8 7 6 5 4 3 2 1



MATED VIEW  
10-WAFER CONNECTOR SHOWN

NOTES:

- MATERIALS:  
RETAINER HOUSING/WAFER PLASTIC - LIQUID CRYSTAL POLYMER (LCP),  
GLASS FILLED, UL94 V-0. COLOR: BLACK (30µin Au) OR GRAY (50µin Au)  
TERMINALS - HIGH PERFORMANCE COPPER ALLOY
- FINISHES:  
TERMINAL - SELECTIVE GOLD (Au) IN CONTACT AREA,  
SELECTIVE MATTE TIN (Sn) ON PCB TAILS,  
NICKEL (Ni) UNDERPLATE OVERALL
- PRODUCT SPECIFICATION: PS-74031-999
- PACKAGING SPECIFICATION: PK-70873-0750
- MATES WITH VHDM 8-ROW BACKPLANE HEADER SERIES NO. 74060
- THESE PARTS CONFORM TO MOLEX COSMETIC SPECIFICATION PS-45499-002 CLASS B.

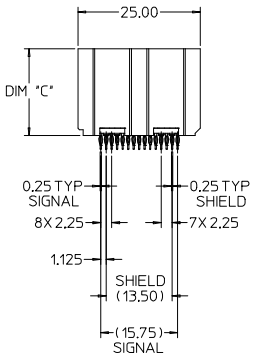
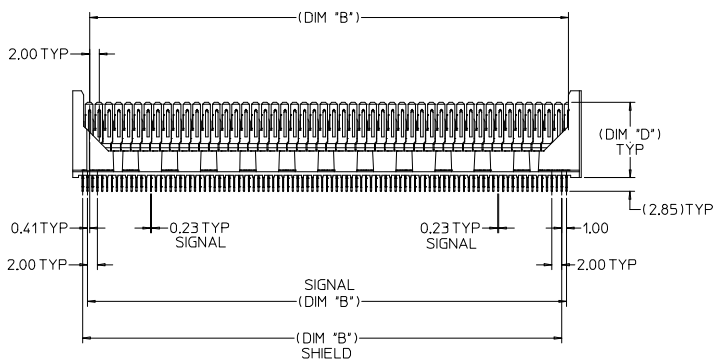
MATERIAL NUMBER ASSIGNMENT

75117 - \* \* \* \*

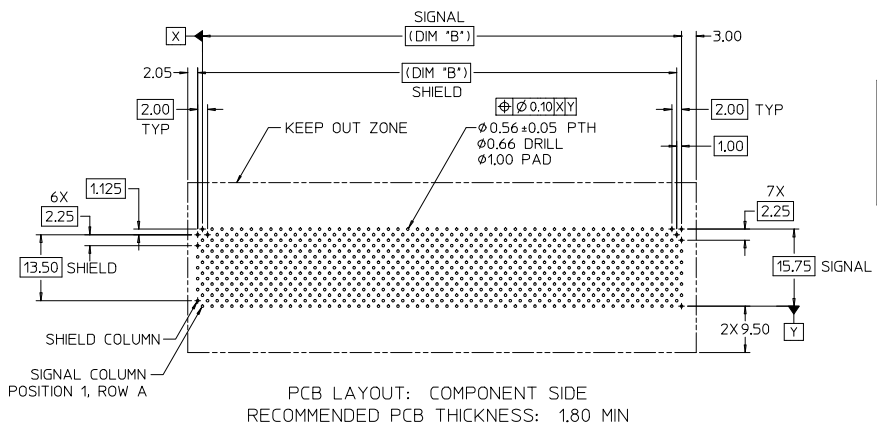
GOLD THICKNESS/TAIL PLATING

- 0 = 30µm / MATTE TIN (FORMERLY TIN/LEAD)
- 1 = 50µm / MATTE TIN (FORMERLY TIN/LEAD)
- 7 = 10µm/MATTE TIN (MAPS)
- 8 = 50µm/MATTE TIN
- 9 = 30µm/MATTE TIN

- STAR SIGN \* CONSULT FACTORY FOR AVAILABILITY
- NUMBER OF WAFERS
  - 0 = 50
  - 1 = 10
  - 2 = 25
- STAR SIGN \* DIM "H" STACK HEIGHT
  - 18 = 18mm
  - 28 = 28mm



LEAD FREE  
PLATING



MATERIAL NUMBER	NUMBER OF WAFERS	DIM 'A'	DIM 'B'	DIM 'C'	DIM 'D'	DIM 'H' STACK HEIGHT
*75117-*228	25	54.05	48.00	27.74	25.36	28
*75117-*128	10	24.05	18.00			
*75117-*028	50	104.05	98.00	17.74	15.36	18
75117-*218	25	54.05	48.00			
75117-*118	10	24.05	18.00			
75117-*018	50	104.05	98.00			

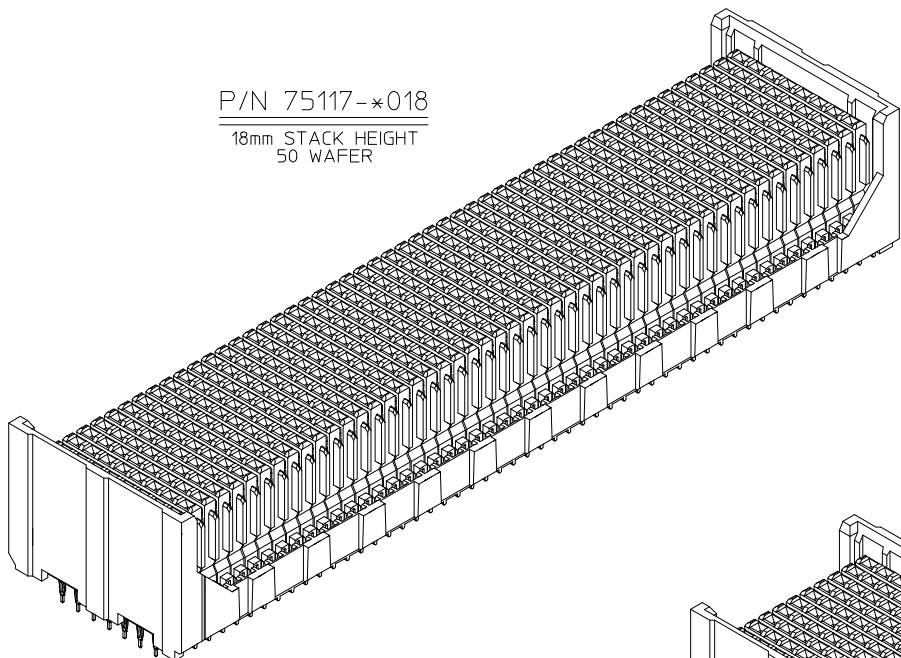
\* CONSULT FACTORY FOR AVAILABILITY

L.F. CONVERSION /MAPS E.C. NO: UCP2013-3702 DRAWN BY: DRYNWRHPPLE CHECKED BY: CHYKHMOLEE APPROVED BY: APPRSHILLER 2013/02/07 2013/02/07 2014/02/05	QUALITY SYMBOLS ∇=0 ∇=0 ∇=0	GENERAL TOLERANCES (UNLESS SPECIFIED) DIMENSIONS IN INCH 4 PLACES ±--- ±--- 3 PLACES ±--- ±--- 2 PLACES ±0.13 ±--- 1 PLACE ±0.25 ±--- 0 PLACE ± ± ANGULAR ± 2 ° DRAFT WHERE APPLICABLE MUST REMAIN WITHIN DIMENSIONS	DIMENSION STYLE MM ONLY DRAWN BY: SREED DATE: 2013/02/27 CHECKED BY: JBI NINGHAM DATE: 2013/02/27 APPROVED BY: CBI XLER DATE: 2013/02/27	SCALE: 2:1 DESIGN UNITS: METRIC THIRD ANGLE PROJECTION	TITLE: VHDM 8-ROW DAUGHTERCARD STACKER CONNECTOR SALES DRAWING molex	MATERIAL NO. SD-75117-001 DOCUMENT NO. SD-75117-001	SHEET NO. 1 OF 2

20 19 18 17 16 15 14 13 12 11 10 9 8 7 6 5 4 3 2 1

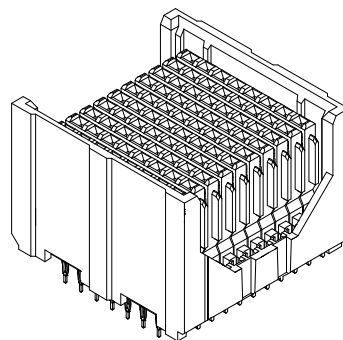
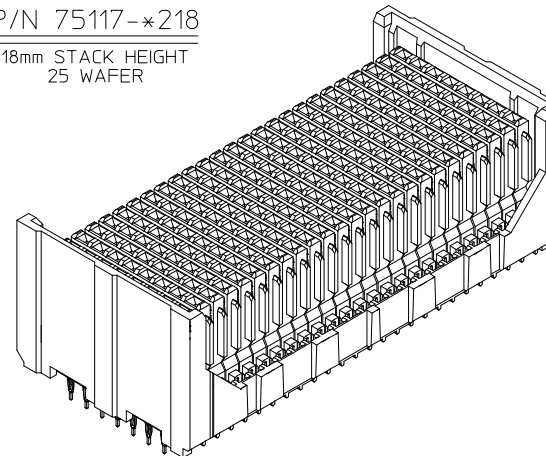
P/N 75117-\*018

18mm STACK HEIGHT  
50 WAFER



P/N 75117-\*218

18mm STACK HEIGHT  
25 WAFER



P/N 75117-\*118

18mm STACK HEIGHT  
10 WAFER

<b>LEAD FREE CONVERSION</b> IEC NO: UCP2013-3702 DRAWN BY: CHYKHOFFLE 2013/02/07 CHECKED BY: APPR:SMILLER 2014/02/05 DATE:	QUALITY SYMBOLS	GENERAL TOLERANCES (UNLESS SPECIFIED)	DIMENSION STYLE	SCALE	DESIGN UNITS	THIRD ANGLE PROJECTION
	▽=0	4 PLACES ± mm ± INCH	MM ONLY	4:1	METRIC	
	▽=0	3 PLACES ± 0.13 ± ---				
	▽=0	2 PLACES ± 0.25 ± ---				
		ANGULAR ± 2 °				
		DRAFT WHERE APPLICABLE MUST REMAIN WITHIN DIMENSIONS	MATERIAL NO.	DATE	TITLE	
			SEE CHART	2003/02/27	VHDM 8-ROW DAUGHTERCARD STACKER CONNECTOR SALES DRAWING	
				2003/02/27	<b>molex</b>	
					DOCUMENT NO.	SHEET NO.
					SD-75117-001	2 OF 2
					THIS DRAWING CONTAINS INFORMATION THAT IS PROPRIETARY TO MOLEX INCORPORATED AND SHOULD NOT BE USED WITHOUT WRITTEN PERMISSION	

19 18 17 16 15 14 13 12 11 10 9 8 7 6 5 4 3 2 1