

PART NUMBER	REV	FEED TYPE	DESCRIPTION	PROGRAMMED MEMORY CHIP
2151004-1	A	MECHANICAL	FINE CRIMP HEIGHT ADJUST	-
2151004-2	A	PNEUMATIC	FINE CRIMP HEIGHT ADJUST	-
2151004-5	A	SERVO	FINE CRIMP HEIGHT ADJUST	8-2151004-5
2151004-6	A	SERVO	NON CRIMP HEIGHT ADJUST	8-2151004-6
2151004-7	A	NONE	FINE CRIMP HEIGHT ADJUST	-
7-2151004-7	A	-	SPARE PARTS KIT	-

SUPERSEDED BY 2151488-1
 SUPERSEDED BY 2151488-2
 SUPERSEDED BY 2151488-5
 SUPERSEDED BY 2151488-6
 SUPERSEDED BY 2151488-7

CRIMP	SIZE	TYPE
WIRE	1.07 mm [.042]	F
INSUL	1.58 mm [.062]	O

TERMINAL DATA: TE TERMINAL TYCO ELECTRONICS CRIMP SPEC
 TERMINAL NAME: AMPMODU CRIMP SNAP-IN 22-26 AWG

WIRE STRIP LENGTH	INSULATION DIAMETER RANGE
3.18-3.96 mm [.125-.156 IN]	Ø0.00-1.52 mm [.000-.060 IN]

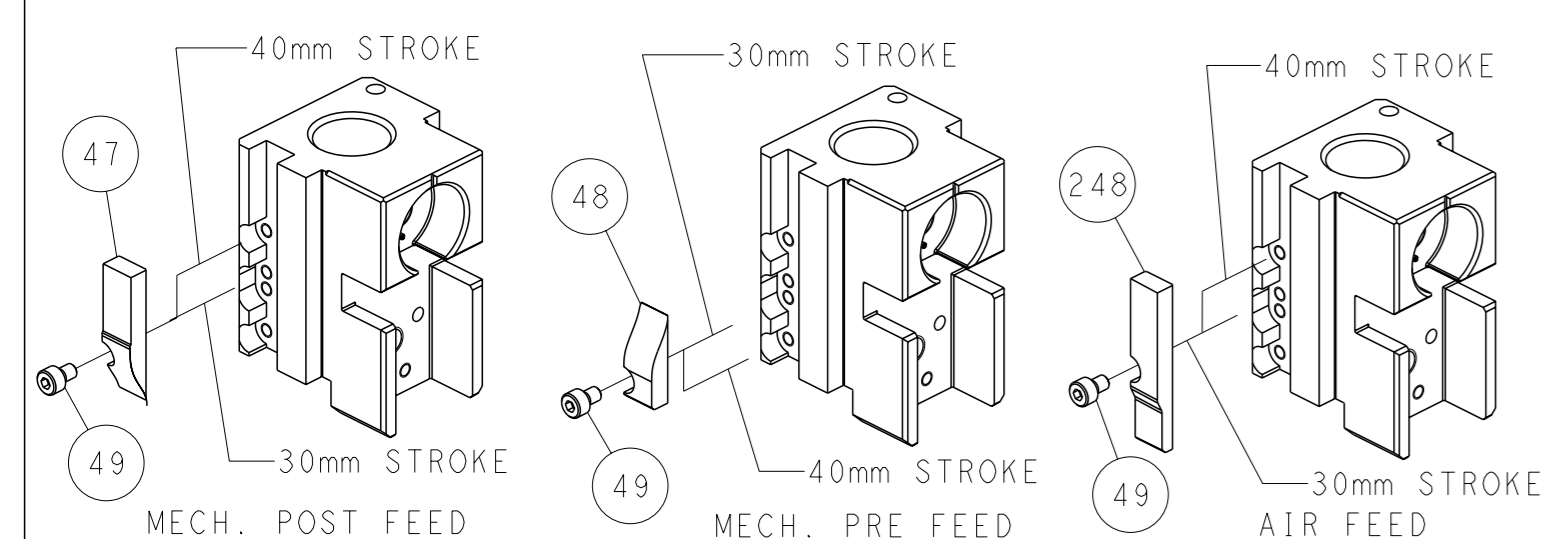
TERMINAL APPL SPEC (A)114-25038 Rev H

TE TERMINAL	TE TERMINAL	TE TERMINAL	TE TERMINAL
104480-2	104480-3	104480-4	1-104480-2
1-104480-3	1-104480-7		

WIRE SIZE	CRIMP HEIGHT mm [INCH]	FINE ADJUST REF SETTING*
22 AWG	0.91±0.05 [.036±.002]	8.2
24 AWG	0.81±0.05 [.032±.002]	9.6
26 AWG	0.76±0.05 [.030±.002]	10.0

- RECOMMENDED SPARE PARTS
- GREASE BEARING SURFACES LIGHTLY
- LUBRICATE DAILY PER THE APPLICATOR INSTRUCTION SHEET SUPPLIED WITH THE APPLICATOR.
- APPLICATOR SPECIFIC DATA TO BE ENTERED INTO BLANK MEMORY CHIP AT ASSEMBLY.
- TO CONVERT THE APPLICATOR TO A NON-CARRIER CUTTING STYLE, REMOVE ITEM 13 AND ATTACH TO THE LOCATION INDICATED.
- POSITIONAL ADJUSTMENTS OF THE STRIPPER MAY BE REQUIRED WHEN MOVING THE APPLICATOR BETWEEN BENCH AND LEADMAKER APPLICATIONS.
- FOR THE ASIAN VERSION OF THIS APPLICATOR, SEE LOG 2151004-9
- GREASE THREADS, GROOVE AND O-RING ON ITEMS 35 & 252.
- MAGNET MUST BE ORIENTED CORRECTLY IN ORDER TO PROPERLY ACTUATE THE COUNTER.

FEED VER. TO CONVERT TO	RETROFIT KIT	ADDITIONAL PARTS REQ'D
MECHANICAL	2119949-1	56
PNEUMATIC	2119950-1	56
SERVO	2119951-1	135, 198, 240



ITEM NO	DESCRIPTION	ITEM NO	
-77	8-21084-0 O-RING, .676 ID, .070 DIA. MAT.	252	
-7	2119640-1 PUSH ROD, AIR FEED	250	
-6	2079988-1 BUSHING, LCH5-12, MISUMI	249	
-5	2119641-1 FEED CAM, AIR FEED	248	
-2	2119798-1 DETENT PIN	247	
-1	1-22279-3 SPRING, COMPRESSION	246	
	2119758-1 RAM, AMP STYLE, SIDE FEED, NON-ADJ.	245	
	2119082-1 CAM, SNAIL, INSULATION ADJUSTMENT	244	
	2079764-1 WASHER, WAVE SPRING, CREST-TO-CREST	243	
	PART NO	DESCRIPTION	ITEM NO

SUPERSEDED BY 2151488-7
 SUPERSEDED BY 2151488-6
 SUPERSEDED BY 2151488-5
 SUPERSEDED BY 2151488-2
 SUPERSEDED BY 2151488-1

REV	DATE	BY	APPV
A	28SEP2011		TE
A1	21AUG2012		TE
A2	07SEP2012		TE

ITEM NO	DESCRIPTION	ITEM NO	
-	2119083-1 RETAINER, INSULATION DIAL	242	
-	18023-1 SCR, SKT HD CAP M3 X 5.0	241	
-	2168400-6 SHCS, LOW HEAD, RoHS, M5 X 16	240	
-	2119580-1 MECHANICAL FEED ASSEMBLY	239	
-	2063440-1 AIR FEED MODULE	238	
-	356885-4 STOP, SHEAR	237	
-	2119740-2 TAG, IDENTIFICATION	213	
-	1901094-3 SPACER, FEEDER	198	
-	21045-3 RING, RETAIN, EXTERN, 3/16 CRESCENT	172	
-	994969-1 MAGNET, RARE EARTH HIGH ENERGY	166	
-	240638-1 SPRING, FEED FINGER	163	
-	3-23627-7 PIN, RETAIN, GRVD, 3/16 X .854	137	
-	2119799-1 HOLDER, FEED FINGER, AF	136	
-	REF REF SEE TABLE MEMORY CHIP, PROGRAMMED	135	
-	1633743-1 SERVO FEED LATCH ASM	133	
-	1-22281-8 SPRING, COMPRESSION	121	
-	690438-1 FRONT STRIP GUIDE	96	
-	2168083-1 SCR, SKT HD CAP, RoHS, M3 X 8.0	95	
-	2168083-6 SCR, SKT HD CAP, RoHS, M5 X 65	93	
-	455888-6 SPACER, CRIMPER	82	
-	240641-2 SPACER	81	
-	2119956-1 DOCUMENTATION PACKAGE	71	
-	2119740-1 TAG, IDENTIFICATION	67	
-	2168078-1 SCREW, DRIVE, RH, RoHS, 2 x .188	66	
-	2119793-1 LIMITER, ADJUSTMENT BOLT	63	
-	992763-5 SCR, SET, SOC, CONE POINT, M3 x 4.0	62	
-	2-18032-5 SCR, SET, FLT POINT M5 X 20.0	61	
-	2079383-4 SCR, BHSC, RoHS (M4 X 8)	60	
-	5-18022-5 SCR, HEX HD CAP, M4 X 6.0	59	
-	1338683-1 FEED PAWL	56	
-	2168400-1 SHCS, LOW HEAD, RoHS, M4 X 12	54	
-	1-18023-3 SCR, SKT HD CAP M4 X 16.0	53	
-	18023-9 SCR, SKT HD CAP M4 X 6.0	49	
-	2119652-1 FEED CAM, PRE FEED	48	
-	2119653-1 FEED CAM, POST FEED	47	
-	2119656-9 APPLICATOR BASIC ASSEMBLY, SF	46	
-	2119370-1 RAM, AMP STYLE, SIDE FEED	44	
-	2079383-7 SCR, BHSC, RoHS (M8 X 25)	41	
-	2119645-1 DISC, NUMBERED FA WIRE ADJUSTMENT	40	
-	2119957-1 APPLICATOR SHIM PACK	39	
-	2119644-1 RAM WASHER, PRECISION	38	
-	2119085-1 FA HEAD, ATLANTIC STYLE	37	
-	2119092-1 BOLT, ADJUSTMENT	35	
-	2161328-1 HEX HEAD, FLANGED, M5 x 8mm LONG	31	
-	1901091-1 PLATE, REAR STRIP GUIDE	29	
-	1-455888-0 SPACER, CRIMPER	28	
-	22283-1 SPRING, COMPRESSION	27	
-	356835-1 LEVER, DRAG RELEASE	26	
-	240792-1 DRAG, TERMINAL	25	
-	189124-7 GUIDE, FRONT STRIP	24	
-	980371-4 SCR, SKT HD SHLDR 5.0 DIA X 6.0	23	
-	2168083-2 SCR, SKT HD CAP, RoHS, M4 X 8.0	21	
-	1-18028-2 WASHER, FLAT, REG M4	20	
-	2119533-1 STRIPPER, SIDE FEED	19	
-	690518-1 HOLD DOWN, TERMINAL	18	
-	690463-1 FLOATING SHEAR, REAR	17	
-	1-2168083-1 SCR, SKT HD CAP, RoHS, M3 X 6	16	
-	1-690691-3 PLATE, REAR SHEAR	15	
-	2119862-1 SHEAR HOLDER, REAR	14	
-	2119806-1 INSERT, SHEAR	13	
-	3-22280-3 SPRING, COMPRESSION	12	
-	356885-5 STOP, SHEAR	11	
-	2119805-1 SHEAR HOLDER, FRONT	10	
-	462006-6 FLOATING SHEAR, FRONT	9	
-	4-1633139-8 ANVIL, COMBINATION	8	
-	1-240641-1 SPACER	7	
-	690468-2 DEPRESSOR SHEAR, REAR	6	
-	2119757-4 DEPRESSOR, SHEAR	5	
-	2-238011-2 BLOCK, CRIMPER SPACER	4	
-	2119784-5 CRIMPER, INSULATION O PREMIUM	3	
-	455888-7 SPACER, CRIMPER	2	
-	2-1633730-7 CRIMPER, WIRE	1	
-77	PART NO	DESCRIPTION	ITEM NO

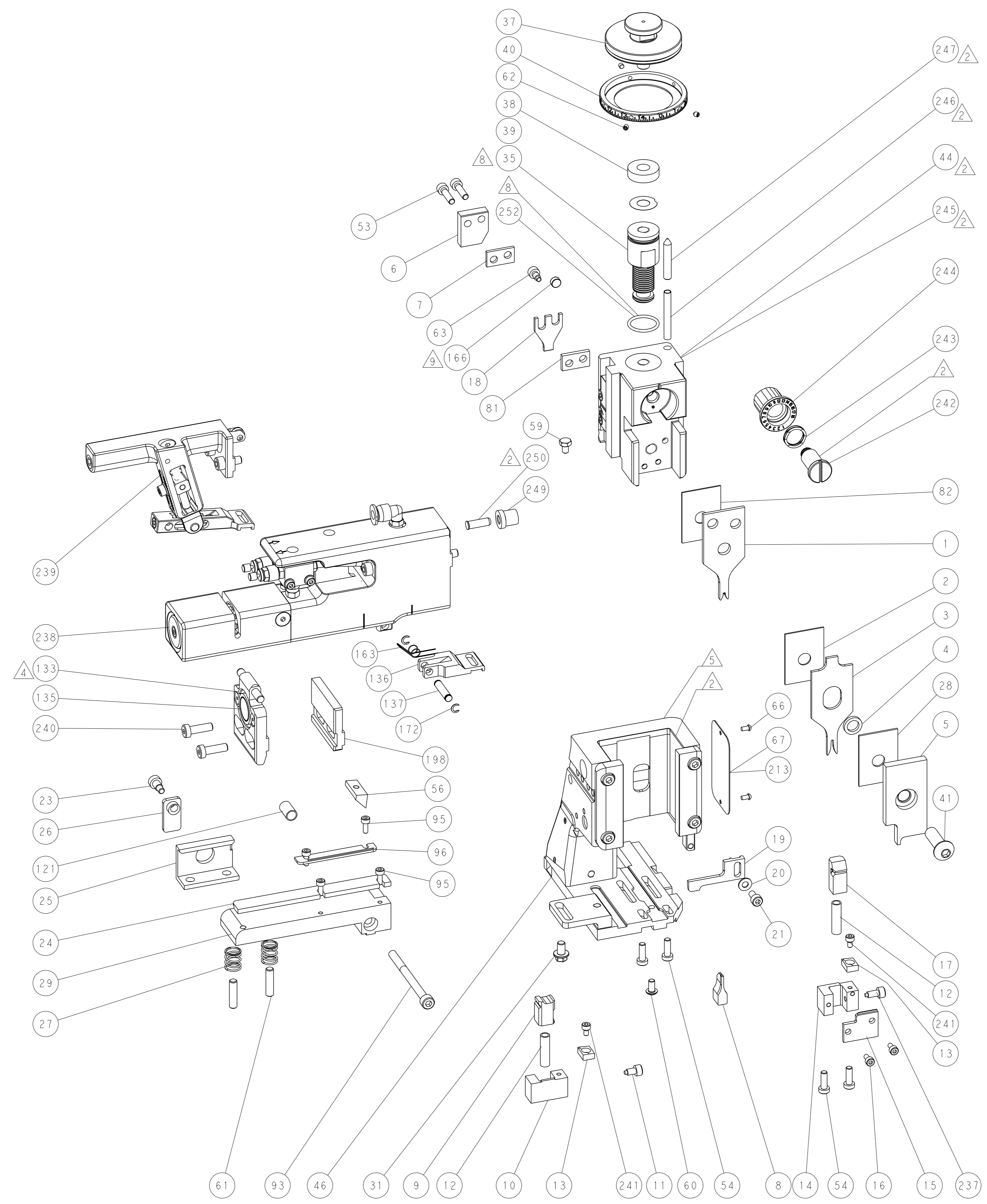
THIS DRAWING IS A CONTROLLED DOCUMENT. DWG: G. HOFFNER 12JAN2011, CHK: G. BAILEY 13JAN2011, APVD: G. BAILEY 13JAN2011

STE TE Connectivity

NAME: Ocean Side Feed Atlantic Style Applicator

SIZE: A1, CAGE CODE: 00779, DRAWING NO: 2151004, SCALE: 1:2, SHEET 1 OF 2, REV: A2

LOC		DIST		REVISIONS			
A	66	P	LYR	DESCRIPTION	DATE	OWN	APVD
		-		SEE SHEET 1	-	-	-



THIS DRAWING IS A CONTROLLED DOCUMENT.		OWN G. HOFFNER 12 JAN 2011	TE Connectivity	
DIMENSIONS: mm		CHK G. BAILEY 13 JAN 2011	NAME Ocean Side Feed Atlantic Style Applicator	
TOLERANCES UNLESS OTHERWISE SPECIFIED: 0 PLC ± 1 PLC ±0.5 2 PLC ±0.13 3 PLC ±0.013 4 PLC ±0.001 ANGLES ±0.0001		APVD G. BAILEY 13 JAN 2011	PRODUCT SPEC	
MATERIAL		APPLICATION SPEC	RESTRICTED TO	
		WEIGHT	SIZE CAGE CODE DRAWING NO A100779C=2151004	
		FINISH	Customer Accessible Production Drawing SCALE 1:2 SHEET 2 OF 2 REV A2	