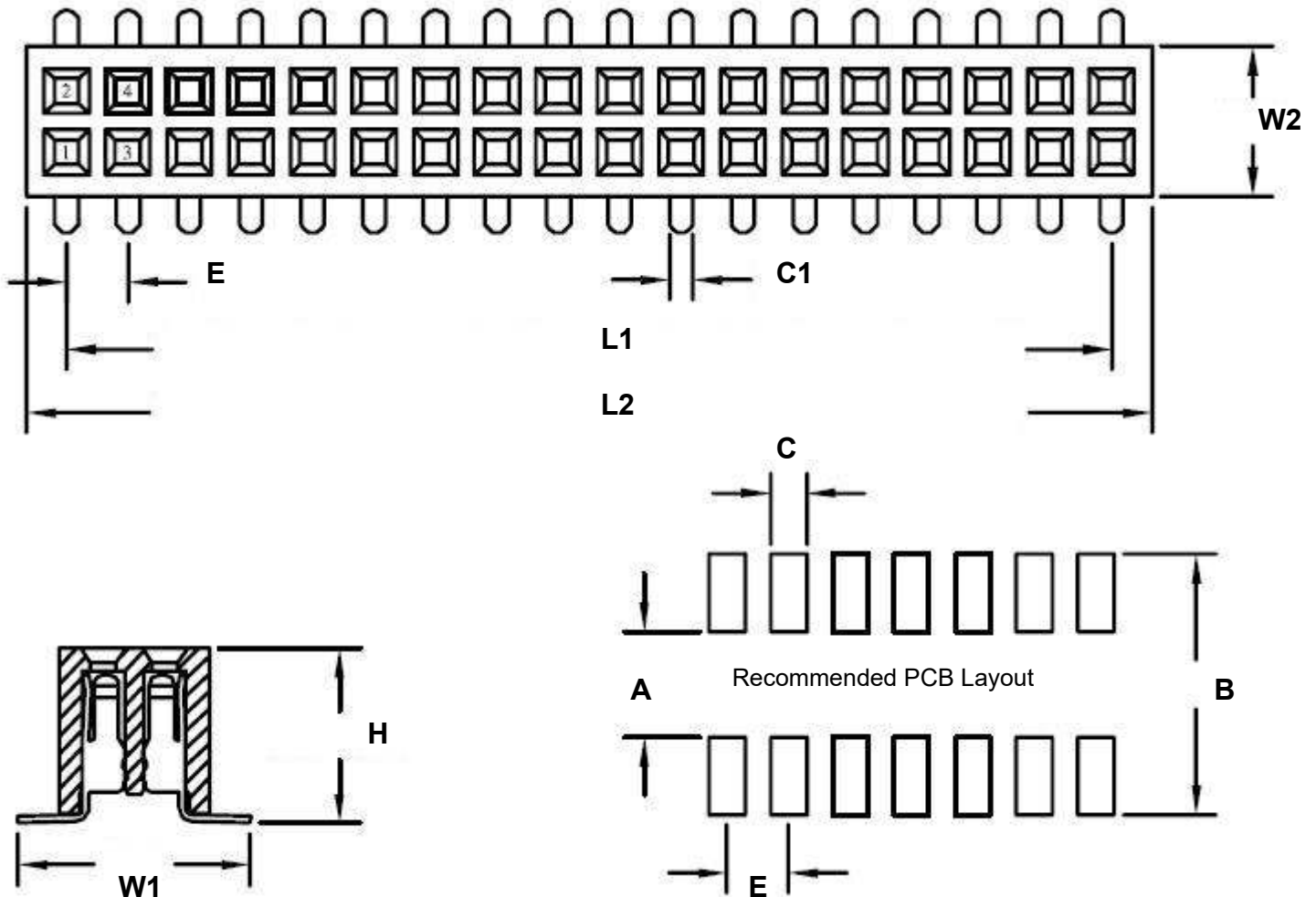


**1.27 mm 80 pin Vertical Female Header Surface Mount Gold**

REF.	DIMENSIONS					
	mm			inches		
	MIN.	TYP.	MAX.	MIN.	TYP.	MAX.
A		2.20				
B		5.40				
C		0.74				
C1		0.48				
E		1.27				
H		3.40				
L1		49.53				
L2		51.20				
W1		4.80				
W2		3.10				



## **SPECIFICATIONS**

Plastic body construction: PA6T plastic (320°C melting point)

Pin construction: Gold plated (brass pin, with 1um gold over 50um nickel)

Operating temperature range: -40°C to +130°C

Reflow maximum temperature: +260°C