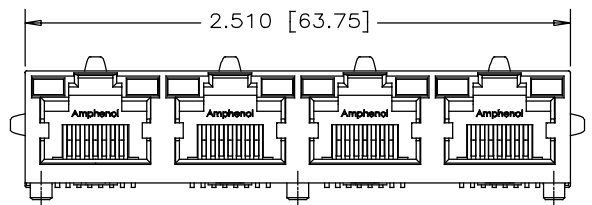
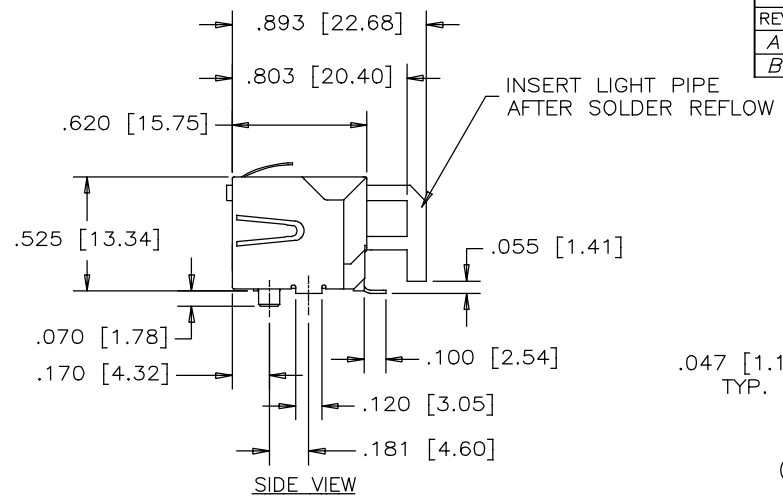


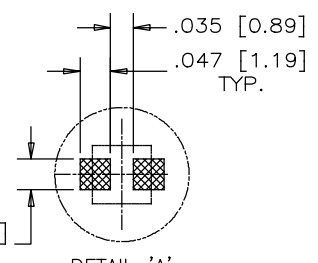
REVISIONS			
REV	DESCRIPTION, ECN, EAR NO.	DATE	APP'D
A	PROPOSAL	MAY15/15	L.CHAN
B	UPDATED SHIELD	MAY25/15	L.CHAN



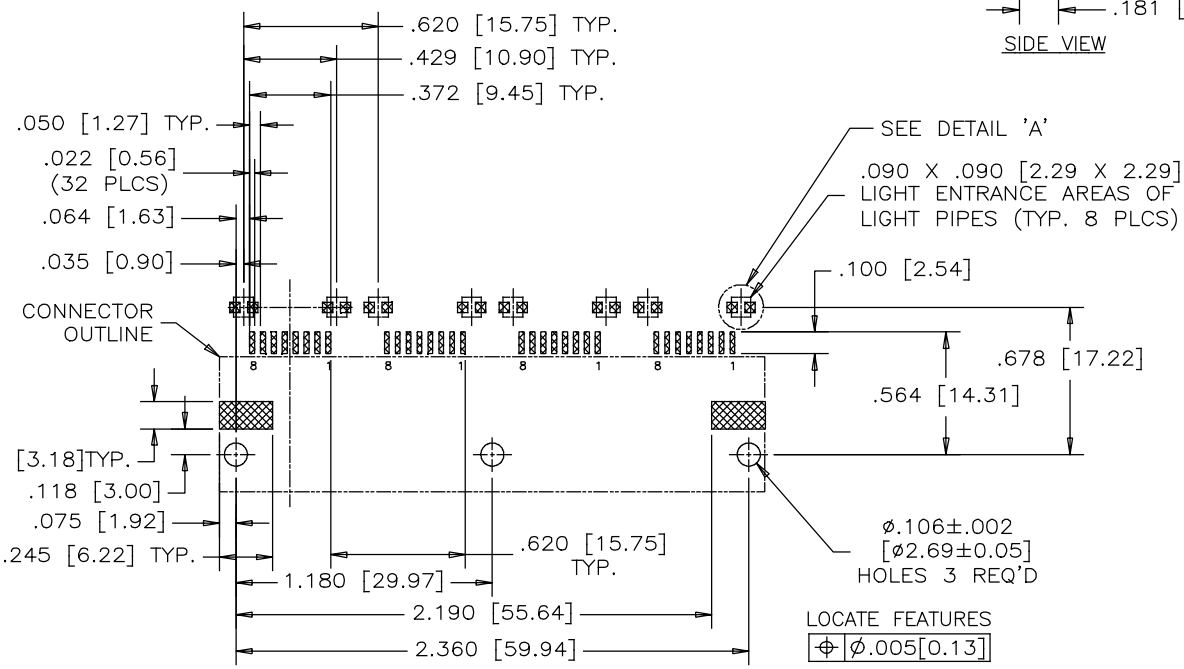
FRONT VIEW



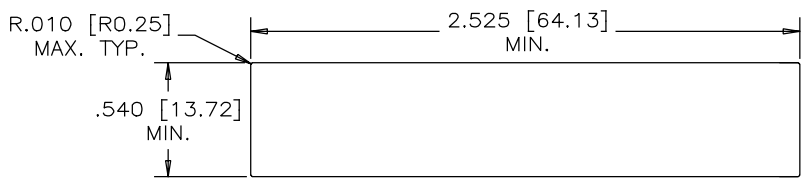
SIDE VIEW



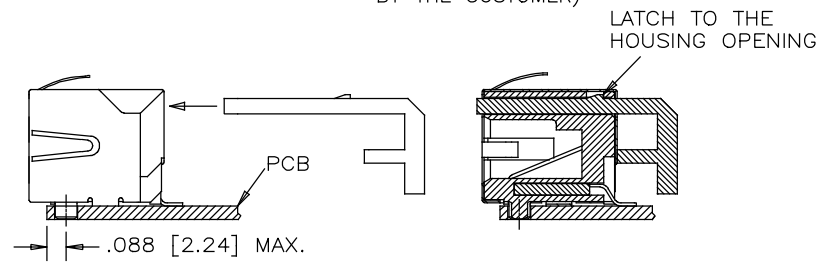
DETAIL 'A'
(ENLARGED)
SMT LED SOLDER PAD
(SMT LED TO BE PROVIDED BY THE CUSTOMER)



RECOMMENDED P.C.B. LAYOUT
(COMPONENT SIDE OF BOARD)



RECOMMENDED PANEL CUTOUT



AFTER SOLDER REFLOW, LOAD LIGHT PIPE THROUGH THE CONNECTOR REAR ACCESS IN THE DIRECTION AS SHOWN

- MATERIALS:**
 PLASTIC HOUSING: HIGH TEMPERATURE THERMOPLASTIC
 FLAMMABILITY RATING UL 94V-0
- CONTACTS:**
 PHOSPHOR BRONZE
 PLATING: 20 μ" [0.51 MICRONS]
 MIN. GOLD ON MATING SURFACES.
 50 μ" [1.27 MICRONS]
 MIN. NICKEL UNDERPLATE.
 100 μ" [2.54 MICRONS]
 MIN. MATTE TIN ON CONTACT TAILS.

SHIELD:
 COPPER ALLOY
 PLATING: NICKEL

LIGHT PIPE:
 CLEAR POLYCARBONATE
 FLAMMABILITY RATING UL 94V-0

AMPHENOL PART NUMBER: RJSSE-5581-04



UNLESS SPECIFIED OTHERWISE	DRAWN FRANK.W	DATE MAY15/15
PRIMARY UNITS INCH	CHECKED L.CHAN	MAY15/15
SECONDARY MILLIMETER	M.E. APP'D	
REFERENCE IN PARENTHESES	Q.A. APP'D	
GENERAL TOLERANCES	DWG APPR.	
1 DECIMAL PLACE ±0.025	ENG. REL. NO.	
2 DECIMAL PLACES ±0.020	REF.	
3 DECIMAL PLACES ±0.015	THIRD ANGLE PROJECTION	DO NOT SCALE DRAWING
ANGULAR DEGREES ±1.0°		

Amphenol Canada Corp. www.amphenolcanada.com	
TITLE 4 PORT SURFACE MOUNT JACK 8 POSITION, 8 CONTACTS, SHIELD, WITH LIGHT PIPES - RoHS COMPLIANT	
DWG. NO. P-RJSSE-5581-04	REV B
CODE ID NO. 03554	DWG SIZE: C SCALE: N/A SHEET 1 OF 1