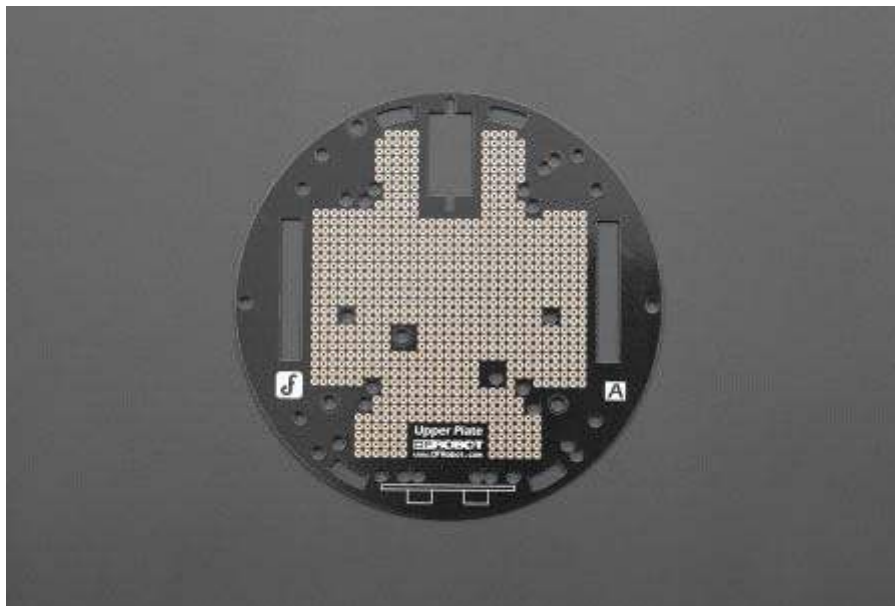




# Upper Deck for MiniQ

## SKU:DFR0310



## INTRODUCTION

Time to upgrade! This is an upper deck PCB for the 2WD MiniQ Robot Chassis. It is compatible with 9g micro servo and URM ultrasonic mounting bracket. With this upper deck you can upgrade the MiniQ with more sensors, and carry more duties - more possibilities, much more fun.

The leaf pads on the surface make it an ideal on-the-go prototyping board, and it is stackable. You can not only solder DIP components but also solder SMD components with this upper deck.

## **SPECIFICATION**

- Compatible with Romeo V1.1 & Romeo V2
- Size: 12.2 x 12.2 cm(4.8x4.8")
- PCB Surface: immersion gold

## **SHIPPING LIST**

- Upper Deck for MiniQ x1