

- 1
- 2
- 3
- 4
- 5
- 6
- 7
- 8
- 9
- 10
- 11
- 12
- 13
- 14
- 15
- 16
- 17
- 18

**MATERIAL**

Glass-fibre reinforced polyamide based (PA) technopolymer, black colour, matte finish with "PUSH" tampoprinted in grey colour. Avoid contact with solvents, alcohol or detergents containing alcohol to prevent deterioration of the tampoprinted inscription.

**CENTRE CAP**

Technopolymer, black colour. On request and for sufficient quantities, it can be supplied in yellow RAL 1021 (safety) or in other colours, with customised graphic symbols, marks or writing.

**STANDARD EXECUTION**

Glass-fibre reinforced technopolymer clamping element with tothing and retaining pin, black colour, with knurling on the protruding part to make initial tightening easier. AISI 302 stainless steel return spring. Brass boss, threaded blind hole.

**OTHER EXECUTIONS ON REQUEST**

Standard metric holes.

**FEATURES AND APPLICATIONS**

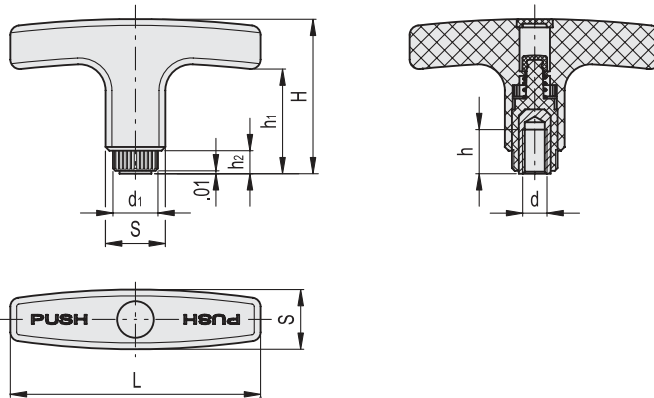
Particularly suitable where the handle needs to turn freely to avoid that clamping may be accidentally affected.

**INSTRUCTIONS OF USE**

Press the handle to engage the tothing and turn it. By releasing the handle the spring releases the tothing, thus the handle returns to the rest position.



ELESA Original design



Fixed & Revolving handles

INCH

Code	Description	L	d	S	H	d1	h	h1	h2	Teeth nr	Δ
932631	L.652-S/67 B-1/4-20	2.64	1/4-20	0.63	1.61	0.47	0.39	1.14	0.16	18	0.07
932662	L.652-S/80 B-5/16-18	3.15	5/16-18	0.79	1.85	0.59	0.51	1.24	0.22	20	0.1