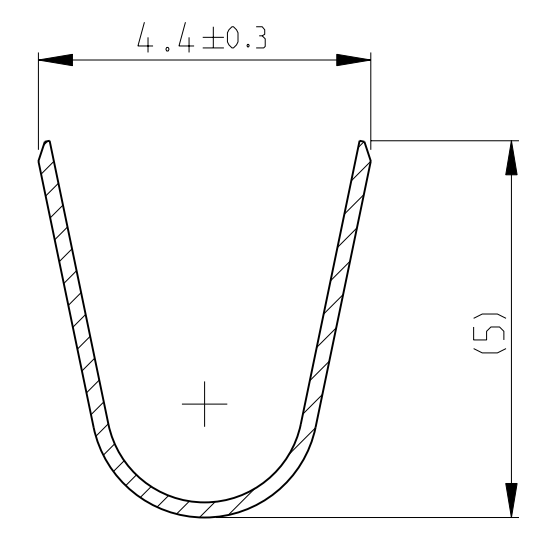
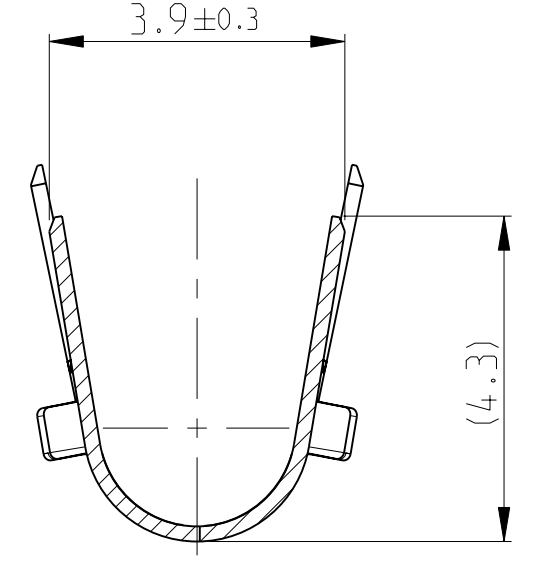


EGGMA09502

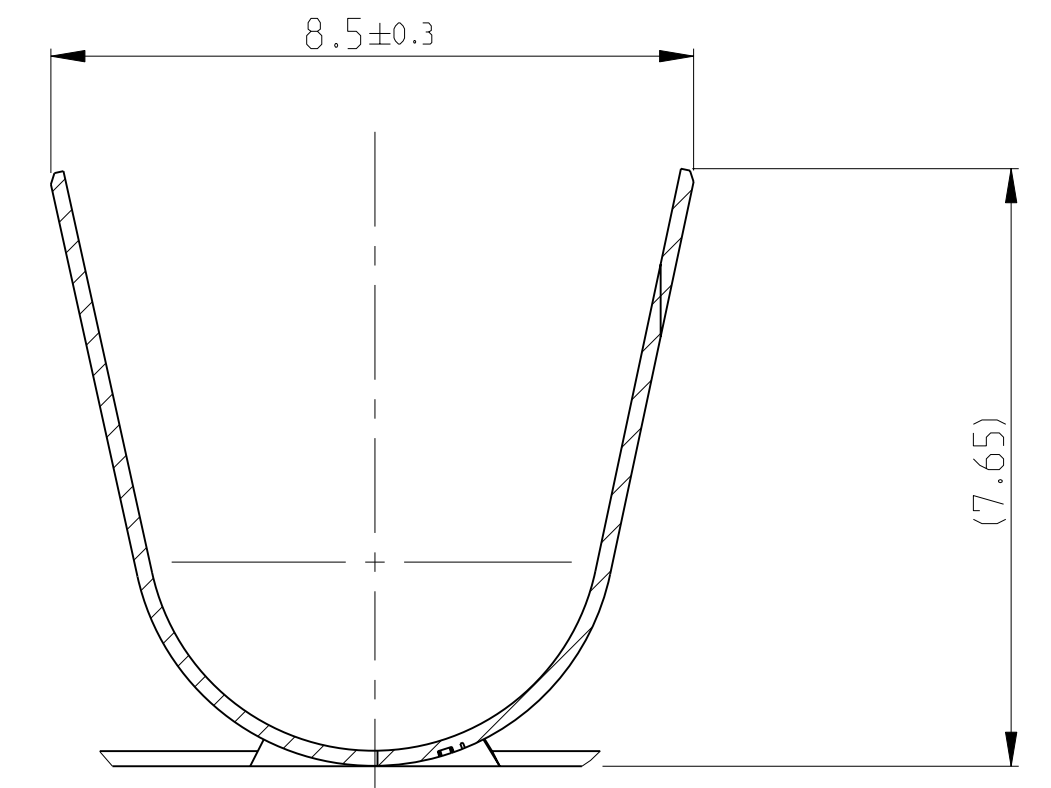
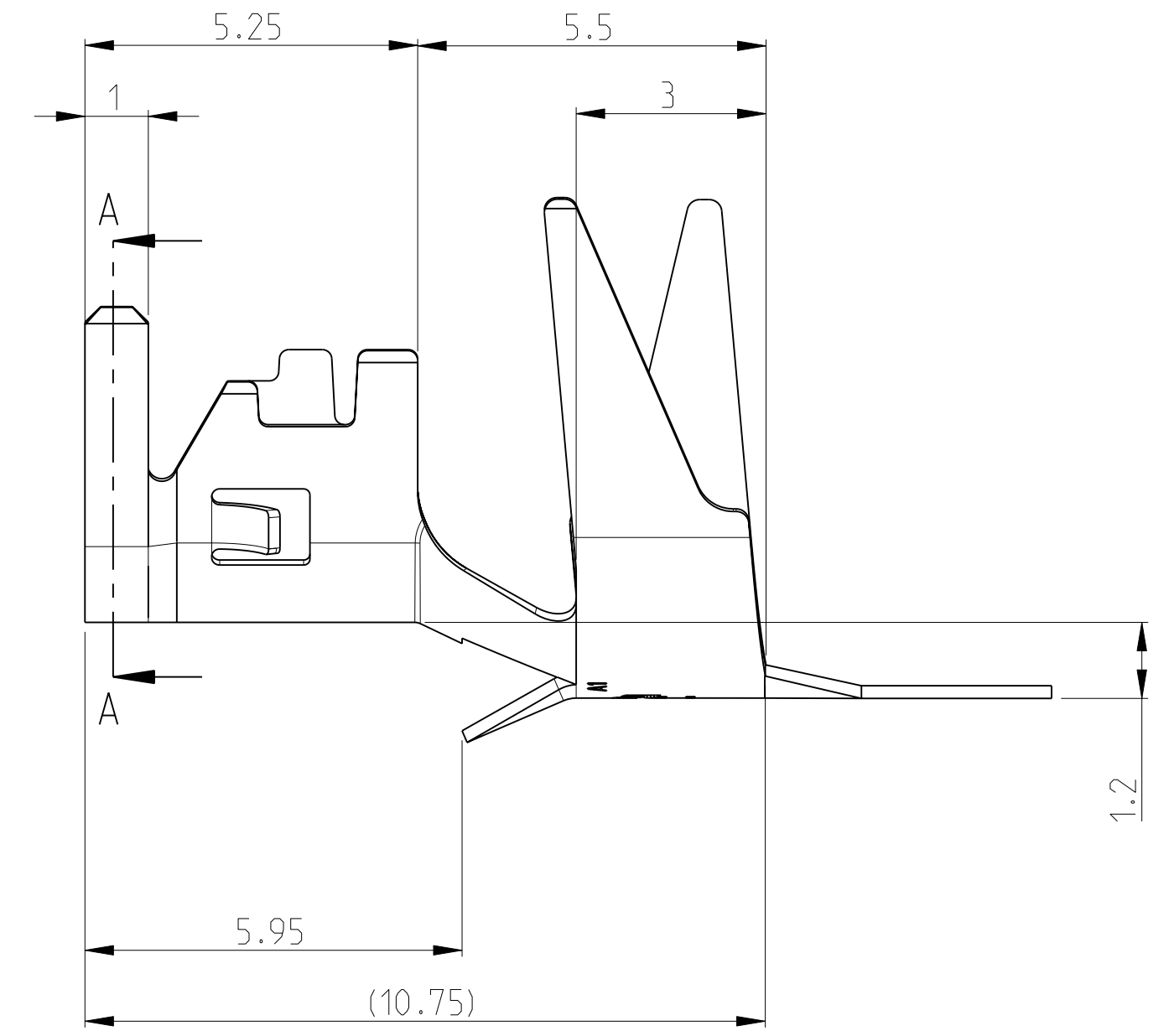
LOC	DIST	REV	DATE	DWN	APVD
A1	-	A1	27MAI2009	HA	WH
		B1	22MAR2010	WH	BS
		-	-	-	-



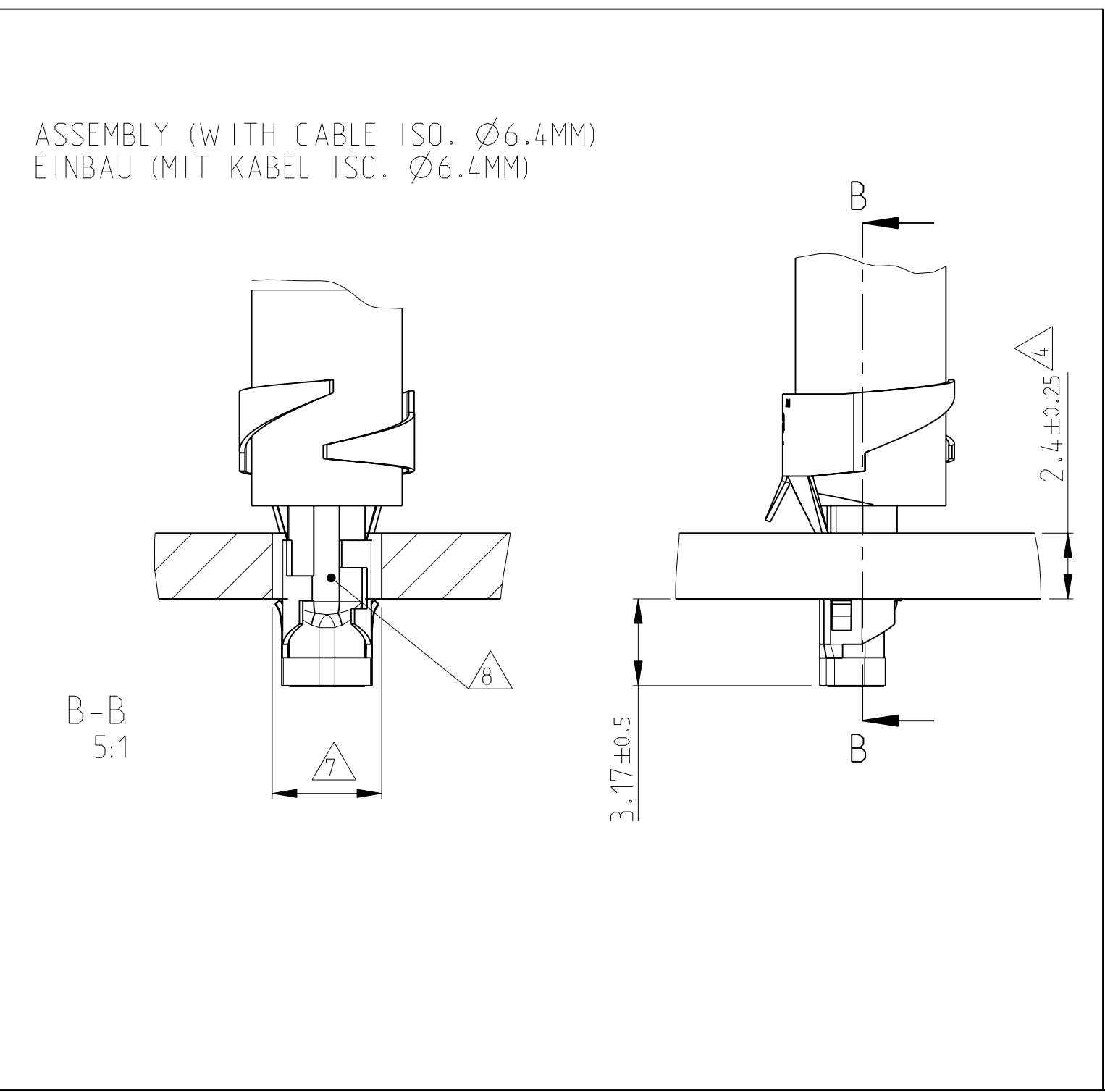
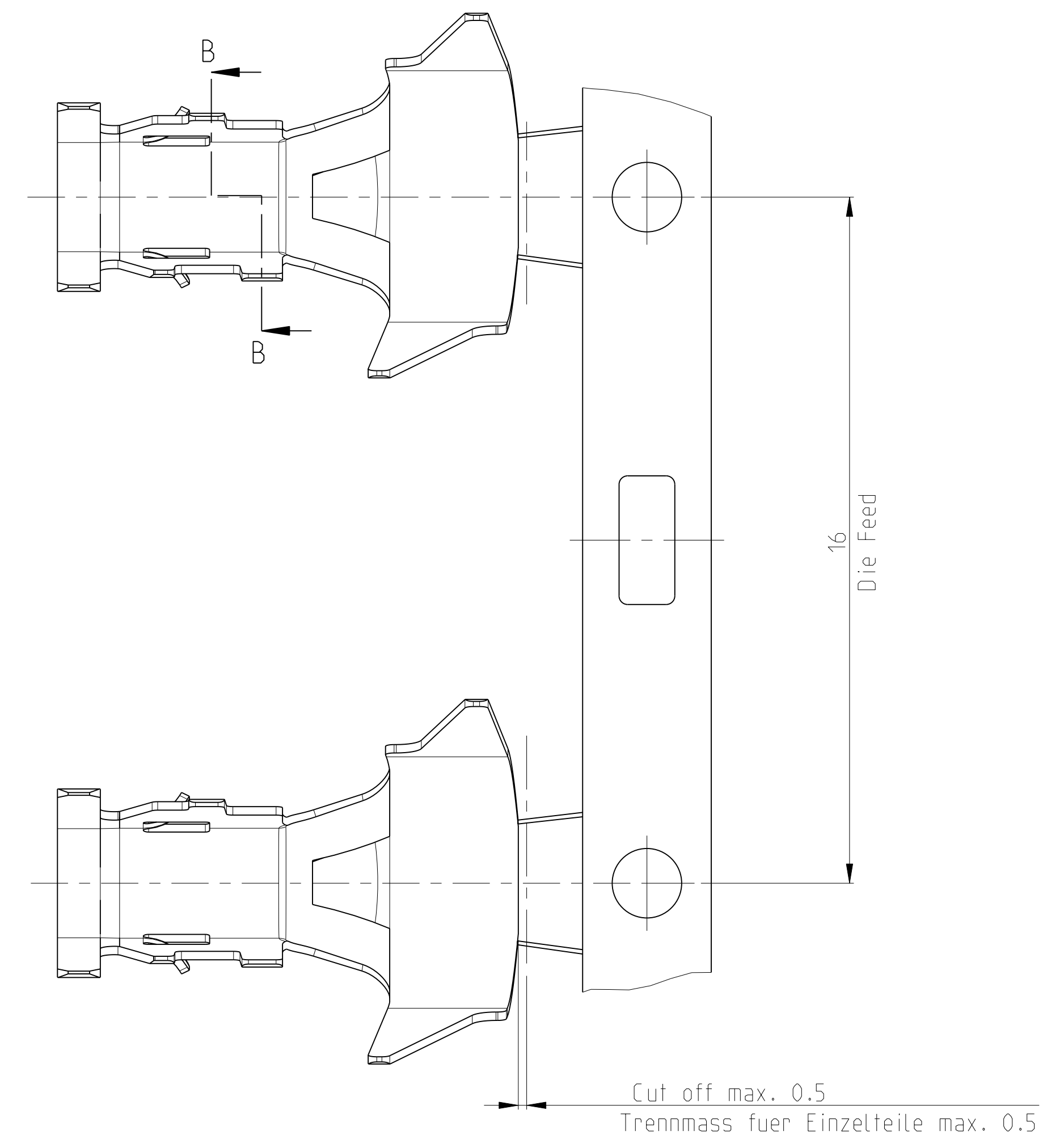
A-A



B-B



C-C



1 FOR WIRE SECTION 4 - 6 MM² AND ISOLATION Ø 4.35 - 6.4
 fuer Leitungsquerschnitt 4 - 6 mm² und Isolations Ø 4.35 - 6.4 mm

2 MATERIAL CuSn. PRE-TIN PLATED
 Material CuSn. vorverzinkt

3 DELIVERED STATE: STRIP ON CORRUGATED REEL
 Anlieferungszustand: Bandware auf Wellenpappenspule

4 PCB THICKNESS ACCORDING DIN EN 60249-2-4 TABLE 3
 Leiterplattendicke nach DIN EN 60249-2-4 Tabelle 3

5 SOLDER FILLING ACCORDING IPC-A-610.6.3.1
 REQUIREMENTS 100%; ACCEPTABLE 80%
 Loeffuellung nach IPC-A-610.6.3.1
 Vorgabe 100%; Akzeptabel 80%

6 MAX. 1 SPLICE PER REEL
 SPLICE BE NOT BONDET TOGETHER
 Max. 1 Trennstelle pro Spule
 Trennstellen sind nicht miteinander verbunden

7 DIAMETERS FOR PCB HOLE; SEE APPLICATION SPECIFICATION 114-94001
 Lochdurchmesser fuer Leiterplatte; siehe Verarbeitungsspezifikation 114-94001

8 APPLICATOR PN....
 Anschlagwerkzeug PN.....

DIMENSIONS: mm 		TOLERANCES UNLESS OTHERWISE SPECIFIED: 0 PLC ± 1 PLC ±0.2 2 PLC ± 3 PLC ± 4 PLC ± ANGLES ±1° FINISH		DWN: H.ATZMANN 27MAI2009 CHK: W.HOFFMANN 27MAI2009 APVD: - NAME: TERMINAL, AMP - IN PRODUCT SPEC: - APPLICATION SPEC: - SIZE: A1 00779 C=1987984 SCALE: 10:1 SHEET: 1 OF 1 REV: B1		Tyco Electronics AMP GmbH 64625 Bensheim (Germany)	
MATERIAL: - 2 FINISH: - 2		WEIGHT: - CUSTOMER DRAWING		RESTRICTED TO: -		Tyco Electronics AMP GmbH 64625 Bensheim (Germany)	