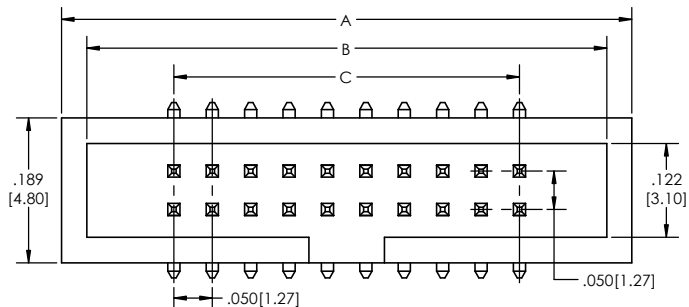
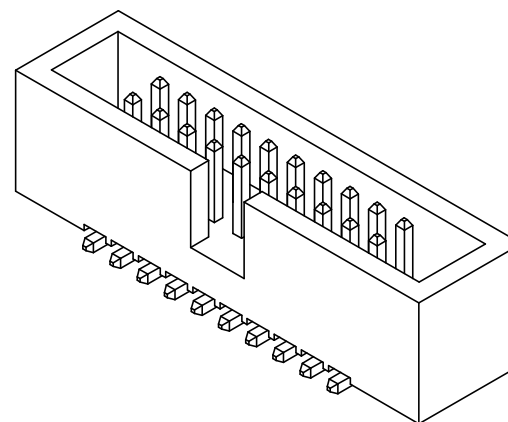
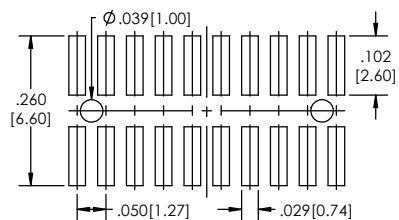


Recommended P.C. Board Layout  
SCALE 6:1



SHTSHSM-5 **XX** - **D** - **02** - **XX** - **V** - **XX** - **XX** - **X** - **LF**  
**(A) (B) (C) (D) (E) (F) (G) (H) (I)**

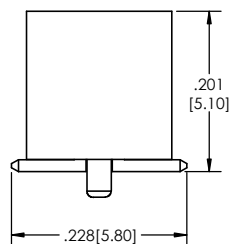
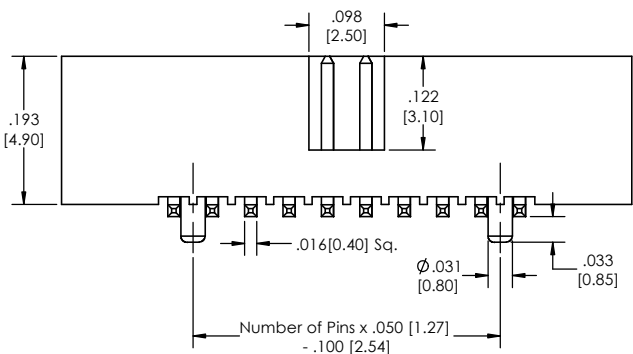
- A. Pins Per Row
  - 03 through 40
  - See Pin Options Box below
- B. Row Specification
  - D= Double Row
- C. Pin Options
  - 02= Surface Mount
- D. Plating Options
  - See Plating Options below
- E. Vertical Mount
- F. Alignment Pin Option
  - Leave blank if not needed
  - AP= With
- G. Packaging Option
  - TB= Tube
  - TR= Tape and Reel
- H. Pad
  - P= Plastic Pad
  - O= No Pad
- I. Lead Free

Pin Options			
Position	A	B	C
03	0.39[9.97]	0.33[8.31]	0.10[2.54]
04	0.44[11.24]	0.37[9.58]	0.15[3.81]
05	0.49[12.51]	0.43[10.85]	0.20[5.08]
06	0.54[13.78]	0.47[12.12]	0.25[6.35]
07	0.59[15.05]	0.53[13.39]	0.30[7.62]
08	0.64[16.32]	0.57[14.66]	0.35[8.89]
10	0.74[18.86]	0.67[17.20]	0.45[11.43]
11	0.79[20.13]	0.73[18.47]	0.50[12.70]
12	0.84[21.40]	0.77[19.74]	0.55[13.97]
13	0.89[22.67]	0.83[21.01]	0.60[15.24]
15	0.99[25.21]	0.93[23.55]	0.70[17.78]
17	1.09[27.75]	1.03[26.09]	0.80[20.32]
20	1.24[31.56]	1.20[29.90]	0.95[24.13]
22	1.34[34.10]	1.30[32.44]	1.05[26.67]
25	1.49[37.91]	1.43[36.25]	1.20[30.84]
30	1.74[44.26]	1.67[42.60]	1.45[36.83]
34	1.94[49.34]	1.87[47.68]	1.65[41.91]
40	2.24[56.96]	2.17[55.30]	1.95[49.53]

Plating options	
T	Matte Tin all Over
F	Gold Flash over Entire Pin
FT	Gold Flash on Contact Area/ Matte Tin on Tail

Specifications:  
 Current Rating: 1.0 Amp  
 Contact Resistance: 30 m Ohms max.  
 Insulation Resistance: 1000 M Ohms min.  
 Dielectric Withstanding Voltage: 250V AC for 1 minute  
 Operating Temperature: -40°C to +105°C

Materials:  
 Insulator: LCP, glass reinforced, rated UL 94V-0  
 Contact: Phosphor Bronze  
 Tails may be clipped to achieve specific dimensions.  
 Products cut to specific sizes are uncancellable/ nonreturnable.  
 Parts are subject to change without notice.



PROPRIETARY AND CONFIDENTIAL  
 THE INFORMATION CONTAINED IN THIS DRAWING IS THE SOLE PROPERTY OF Major League Electronics. ANY REPRODUCTION IN PART OR AS A WHOLE WITHOUT THE WRITTEN PERMISSION OF Major League Electronics IS PROHIBITED.

UNLESS OTHERWISE SPECIFIED:		NAME	DATE
DRAWN	EOW		08/28/15
CHECKED	GWE		08/28/15
ENG APPR.			
MFG APPR.			
INTERPRET GEOMETRIC TOLERANCING PER:		ADDRESS:	
MATERIAL:		2533 Centennial Blvd. Jeffersonville, IN 47130 Phone: 812-944-7244 Fax: 812-944-7268 E-Mail: mle@mllectronics.com	
NEXT ASSY	USED ON	FINISH	
APPLICATION	DO NOT SCALE DRAWING		

**MAJOR LEAGUE Electronics**

TITLE: SHTSHSM-5 Series

SIZE DWG. NO. **C** REV **C**

SCALE 8:1 SHEET 1 OF 1