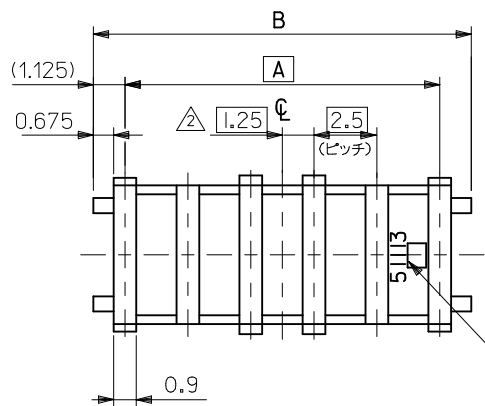
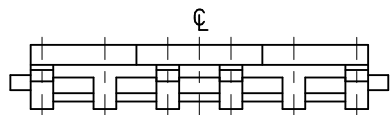
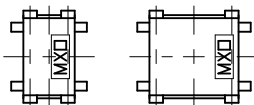
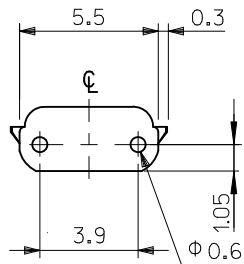


トレードマーク  
TRADE MARK



製品番号  
ENG. NO.



2 CKT. 3 CKT.

2, 3極品形状  
VIEW OF 2,3 CKT.

NOTES

- 適合ハウジング : 51111,51112シリーズ  
APPLICABLE HOUSING : 51111,51112SERIES.
- 極数 / 2 = 偶数に適用。  
APPLY FOR CKT. SIZE / 2 = EVEN.
- 本製品のプラスチック部に黒点等が確認される場合や色合いが異なる場合がありますが、製品性能に影響はありません。  
THERE IS NO INFLUENCE IN THE PRODUCT PERFORMANCE THOUGH THE BLACK SPOT ETC. MIGHT BE CONFIRMED TO THE PLASTIC PART OF THIS PRODUCT AND THE SHADE MIGHT BE DIFFERENT.
- ELV及びRoHS適合品  
ELV AND RoHS COMPLIANT.

2.5	0	17.5	37.25	35	51113-1505	15
1.25	1.25	16.25	34.75	32.5	-1405	14
2.5	0	15	32.25	30	-1305	13
1.25	1.25	13.75	29.75	27.5	-1205	12
2.5	0	12.5	27.25	25	-1105	11
1.25	1.25	11.25	24.75	22.5	-1005	10
2.5	0	10	22.25	20	-0905	9
1.25	1.25	8.75	19.75	17.5	-0805	8
2.5	0	7.5	17.25	15	-0705	7
1.25	1.25	6.25	14.75	12.5	-0605	6
2.5	0	5	12.25	10	-0505	5
1.25	1.25	3.75	9.75	7.5	-0405	4
2.5	0	—	7.25	5	-0305	3
1.25	1.25	—	4.75	2.5	51113-0205	2
E	D	C	B	A	製品番号 MATERIAL NO.	極数 NO. OF CKT.

REVISED EC NO. : J2011-0892 2011/01/06 DRW:RHORI CHKD:KASAKAWA 2011/01/06 APPR:NUKITA 2011/01/11	DESCRIPTION	GENERAL TOLERANCES (UNLESS SPECIFIED)		DIMENSION STYLE MM ONLY		SCALE 5:1	DESIGN UNITS METRIC	THIRD ANGLE PROJECTION		
		10 UNDER	±0.2	DRAWN BY NITO	DATE 2009/08/28	TITLE 2.5 WIRE TO WIRE CONN. RETAINER				
		10 OVER 30 UNDER	±0.25	CHECKED BY KASAKAWA	DATE 2009/08/28	MOLEX INCORPORATED				
		30 OVER	±0.3	APPROVED BY NUKITA	DATE 2009/08/28	MATERIAL NO. DOCUMENT NO. SHEET NO. SEE TABLE SD-51113-001 1 OF 1				
A	REV	ANGULAR ±3 ° DRAFT WHERE APPLICABLE MUST REMAIN WITHIN DIMENSIONS		THIS DRAWING CONTAINS INFORMATION THAT IS PROPRIETARY TO MOLEX INCORPORATED AND SHOULD NOT BE USED WITHOUT WRITTEN PERMISSION						

部品 PART	材質 MATERIAL
リテーナー RETAINER	ポリブチレンテレフタレート UL94V-0 色 : 灰色 POLYBUTYLENE TEREPHTHALATE UL94V-0 COLOR:GRAY