

REV. D

RECOMMENDED P.C. BOARD LAYOUT FOR PLCC

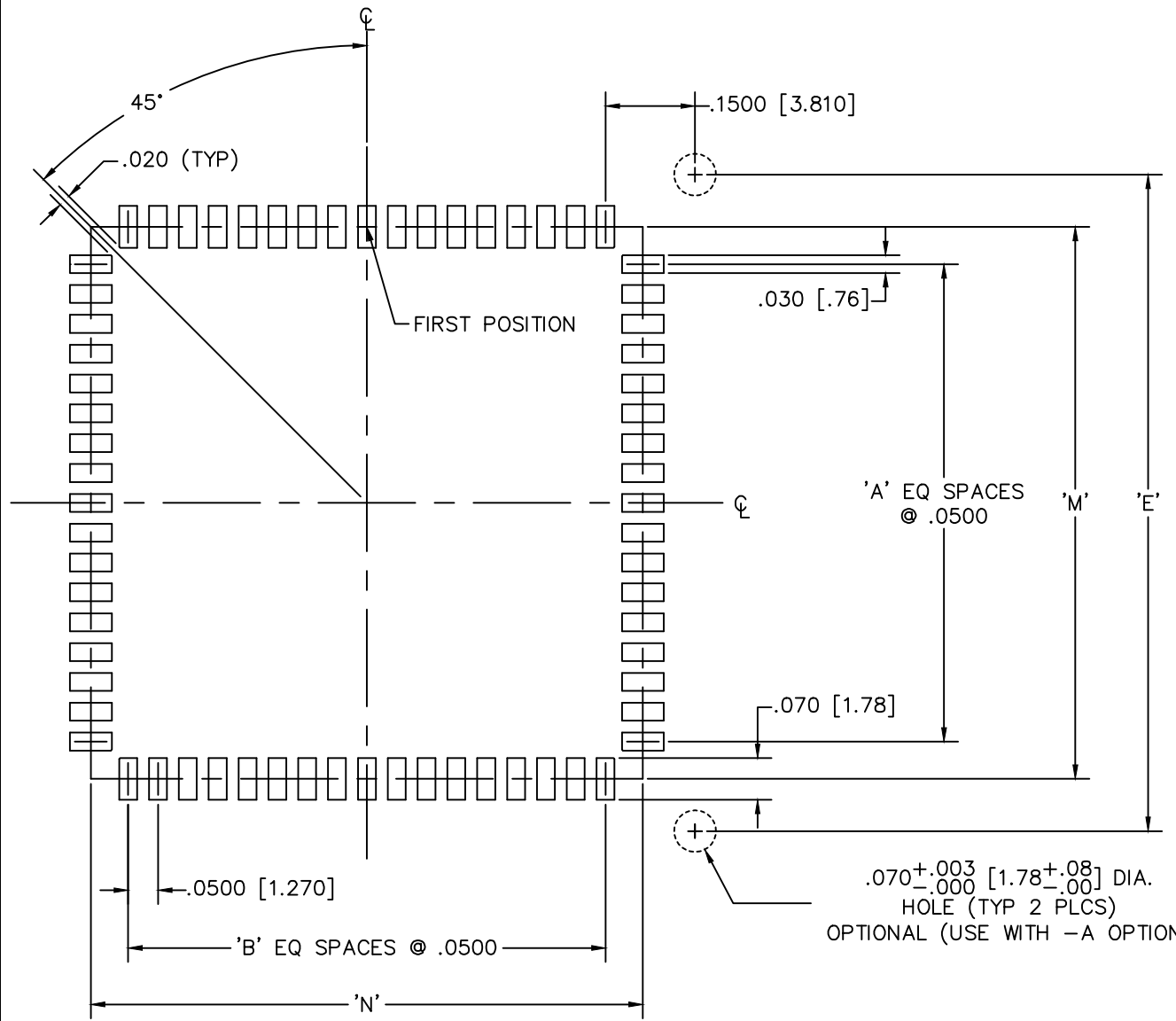


TABLE 1

| 'XX' | 'A' | 'B' | 'M' | 'N' | 'E' |
|------|-----|-----|-------|-------|-------|
| 20 | .04 | .04 | .325 | .325 | .500 |
| 28 | .06 | .06 | .425 | .425 | .600 |
| 32 | .08 | .06 | .525 | .425 | .700 |
| 44 | .10 | .10 | .625 | .625 | .800 |
| 52 | .12 | .12 | .725 | .725 | .900 |
| 68 | .16 | .16 | .925 | .925 | 1.100 |
| 84 | .20 | .20 | 1.125 | 1.125 | 1.300 |

.070^{+.003}/_{-.000} [1.78^{+.08}/_{-.00}] DIA.
 HOLE (TYP 2 PLCS)
 OPTIONAL (USE WITH -A OPTION)

MISC\MKTG\FOOTPRINT
PLCC

samtec

520 PARK EAST BLVD. NEW ALBANY, INDIANA 47150
 PHONE (812) 944-6733 P.O. BOX 1147