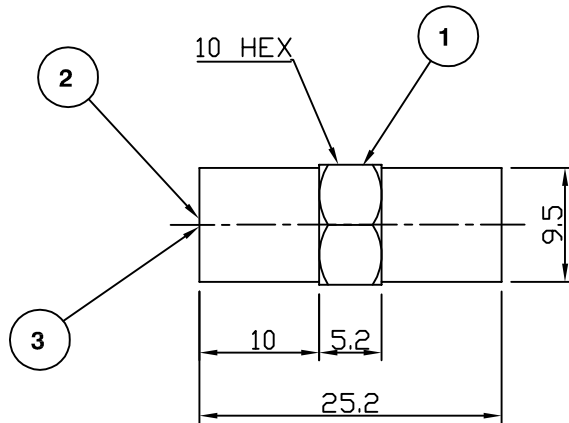


RoHS COMPLIANT



**Electrical Characteristics**

Nominal Impedance: 50 ohms  
 Frequency Range: DC to 2 GHz  
 VSWR: 1.3:1 Max

**Mechanical Characteristics**

Mating Cycles: 500 cycles minimum

| PART | DESCRIPTION                   |
|------|-------------------------------|
| 1    | Body<br>Brass, nickel plated  |
| 2    | Dielectric<br>Delrin          |
| 3    | Contact<br>Brass, gold plated |

|                         |       |     |           |
|-------------------------|-------|-----|-----------|
| First Issue             | JT    | 1   | 05 Aug 10 |
| DESCRIPTION OF REVISION | APPVD | ISS | DATE      |



Cinch Connectivity Solutions  
 7-13 Russell Way,  
 Widford Industrial Estate,  
 Chelmsford, Essex,  
 CM1 3AA, UK.  
 Tel: +44 (0) 1245 359515  
 Fax: +44 (0) 1245 358938

SCALE: Not To Scale

DIMENSIONS: mm

TOLERANCES:  
 ± 0.2mm unless  
 otherwise stated

DRAWN BY: Johnson  
 CHECKED BY: M Spooner  
 APPROVED BY: M Spooner  
 DATE: 05 Aug 10

TITLE:  
**FME Plug to FME Plug**

PART NUMBER:  
**VRA601**

PAGE: 1 of 1