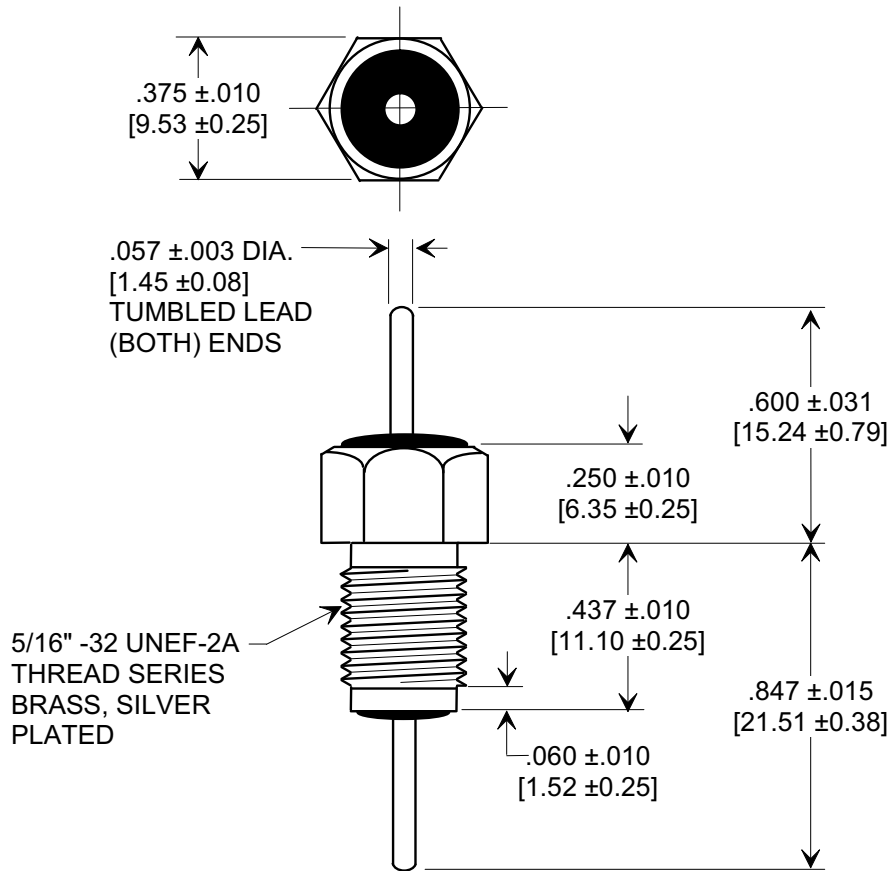
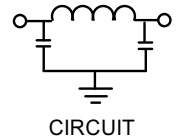
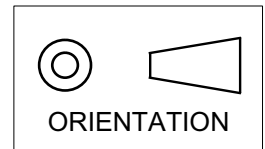


MARKETING SALES DRAWING
DIMENSIONS IN INCHES - DO NOT SCALE THIS DRAWING
DIMENSIONS IN METRIC - []

Electrical Testing
per Tusonix standard
test plans and Mil-Std-202
Test Methods.



NOTES:

- TUSONIX STANDARD PART NUMBER: 4206-020.
 TUSONIX RoHS COMPLIANT PART NUMBER: 4206-020 LF.
 CUSTOMER MUST SPECIFY STANDARD OR RoHS PART NUMBER WHEN ORDERING.
- LEAD FINISH: SILVER PLATED COPPER.
- PART MARKING: TRADEMARK AND VARIATION NUMBER ON HEX FLATS.
 STANDARD PART: BLACK INK. RoHS PART: GREEN INK.

4206	020	1500/ 3000	330 V	N/A	25 A	5	45	70	70	3000 VDC (1) SECOND
			85°C	125°C		10 MHz	100 MHz	1 GHz	10 GHz	
STYLE	VAR.	CAP. (pF)	WORKING VOLTAGE AC 50/60 Hz		CURRENT dc (A)	MINIMUM NO LOAD INSERTION LOSS (dB) AT 25°C PER MIL-STD -220				DIELECTRIC WITHSTANDING VOLTAGE

X-2015 Rev-0 REVISION RECORD Original Release C.O. 960308-1 ADDED NOTES, METRIC & CIRCUIT. S.M. 10-25-05 20051006-1-12	0	TOLERANCES unless otherwise specified 2 PLC. DECIMAL ± 3 PLC. DECIMAL ± NOTED ANGLES ±	Title EMI BUSHING FILTER	
	1		Drawn S.M. 03-08-96	
	TUSONIX TUCSON, ARIZONA		Approved B.Mc. 03-08-96	
	A	4206-020		