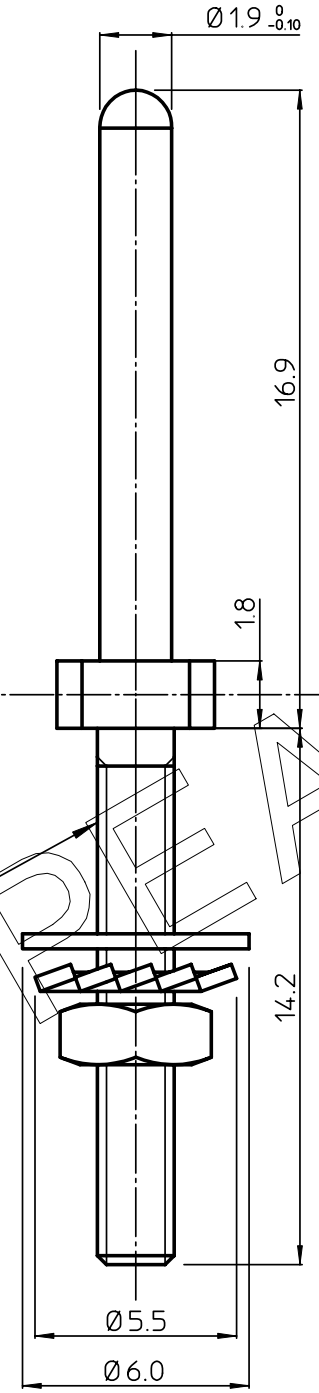
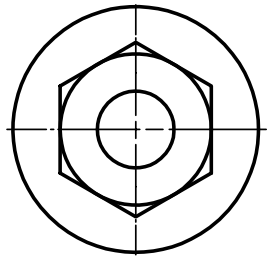
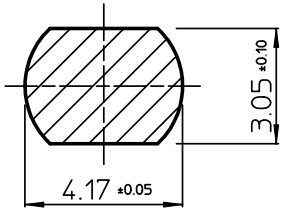


GEN. ST.	01	02	03	04	05	06	07	08	0D	50	60	70	80	90																	
INT. ST.	10	11	12	13	14	18	20	31	32	33	34	38	39	40	42	43	44	45	46	48	56	70	72	73	75	76	81	82	83	84	88

REV.	DATE	DESCRIPTION	BY	C 'K' 'D'
A	2001-09-14	CONVERSION REVISION 02	KN	
B	2005-12-30	105-0244	ALEX B	BKP
C	2006-08-03	106-0119	VIVEK	BKP
D	2008-05-09	108-0063	AB	AB



2-56 UNC-2A THREAD



EUROPEAN PROJECTION

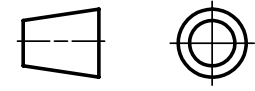
LEAD FREE INDICATOR : LF = LEAD FREE

HM2G04LF

NOTES

1. MATERIAL GUIDE PIN : 1/2 HARD BRAS.
2. FINISH: 0.3 TO 3 μ Ni PLATED ALLOVER.
3. THE PRODUCT (LF) MEETS EUROPEAN UNION DIRECTIVES AND OTHER COUNTRY REGULATIONS AS DESCRIBED IN GS-22-008

1DEC ±0.2 2DEC ±0.1 ANGLES ±1°	APPR.	DATE	SIGN.	MILLIPACS 2 / GUIDING PIN FOR 8 ROW MALE
WE RESERVE THE RIGHT TO CHANGE DIMENSIONS OR REQUIREMENTS WITHOUT PRIOR NOTICE.	DRAFT	1996-04-30	W. Panis	CAT. No. HM2G04LF
	CHECKED	2008-05-09	AB	
	PROD. MGR.	2008-05-09	VM	www.fciconnect.com
	PR. ENG. MGR.	2008-05-09	AB	
ALL DIMENSIONS IN MM	PR. MGT. MGR.			SCALE 3 / 1
REFERENCES				BS,C ,201911,010 DRAWING No. CUSTOMER DRAWING REVISION D



THIS IS OUR EXCLUSIVE PROPERTY. IT IS NOT TO BE COPIED, REPRINTED OR DISCLOSED TO A THIRD PARTY, NOR USED FOR MANUFACTURING WITHOUT OUR WRITTEN CONSENT, AND HAS TO BE RETURNED TO US IN CASE OF NO USAGE

DIT IS ONZE EIGENDOM EN MAG NOCH NAGEMAAKT. HERDRUKT, OVERGEMAAKT AAN DERDEN, NOCH VOOR FABRIKATIE GEBRUIKT WORDEN, ZONDER ONZE SCHRIFTELIJKE TOELATING. BIJ NIET GEBRUIK IS TERUGZENDING VERPLICHT.