

Using the LM8330EVM Evaluation Module

User's Guide



Literature Number: SNVU166
FEBRUARY 2013

| | | |
|----------|-------------------------------------------------------------------|-----------|
| 1 | Introduction | 4 |
| 1.1 | List of Hardware Items for Operation | 4 |
| 1.2 | List of Software Items for Operation | 4 |
| 1.3 | Step-by-step Instructions for Operation and Troubleshooting | 5 |
| 1.4 | Hardware Uninstall Instructions | 5 |
| 1.5 | Software Uninstall Instructions | 5 |
| 2 | EVM Configuration and Description | 6 |
| 2.1 | EVM Options | 6 |
| 2.2 | LED (D1) Indication of USB Attached | 6 |
| 2.3 | Input/Output Connector Description | 6 |
| 2.4 | Test Point Connectors | 6 |
| 2.5 | Schematics | 7 |
| 2.6 | Layout | 10 |
| 2.7 | Bill of Materials | 12 |
| 3 | GUI Configuration and Description | 14 |
| 3.1 | GUI Installation | 14 |
| 3.2 | GUI Functionality | 15 |
| 3.2.1 | Control Access | 15 |
| 3.2.2 | Initialization and LED Control | 18 |
| 3.2.3 | I2C Byte Access | 18 |
| 3.2.4 | LM8330 Registers | 18 |
| 3.2.5 | Keypad Status | 18 |
| 3.2.6 | Keypad Test | 19 |
| 4 | Related Documentation from Texas Instruments | 21 |

List of Figures

| | | |
|-------|---------------------------------------------|----|
| 2-1. | LM8330EVM Schematic Sheet1 | 7 |
| 2-2. | LM8330EVM Schematic Sheet2 | 8 |
| 2-3. | LM8330EVM Schematic Sheet3 | 9 |
| 2-4. | LM8330EVM Top Layer | 10 |
| 2-5. | LM8330EVM Bottom Layer | 11 |
| 3-1. | LM8330EVM GUI Installation Files..... | 14 |
| 3-2. | LM8330EVM GUI Install | 15 |
| 3-3. | LM8330 GUI Initial Screen | 16 |
| 3-4. | LM8330 GUI Open Success Screen..... | 16 |
| 3-5. | LM8330 GUI Open Error Screen | 17 |
| 3-6. | LM8330 GUI Close Screen..... | 17 |
| 3-7. | LM8330 Initialization Example | 18 |
| 3-8. | LM8330 GUI Keypad Test..... | 19 |
| 3-9. | LM8330 GUI Keypad Test Passed Example | 19 |
| 3-10. | LM8330 GUI Keypad Test Failed Example | 20 |

List of Tables

| | | |
|------|-----------------------------------------|----|
| 1-1. | Device and Package Configurations | 4 |
| 2-1. | Test Point Descriptions..... | 6 |
| 2-2. | Bill of Materials..... | 12 |

Introduction

The Texas Instruments (TI) LM8330 evaluation module (EVM) helps designers evaluate the operation and performance of the LM8330 I²C™ Keyscan Controller. The LM8330 keyscan operates from a 1.8V supply and supports 7- and 10-bit I²C addressing in both Standard (100 kHz) and Fast (400 kHz) modes. It offers exceptional ESD performance designed to tolerate IEC6100-4-2 level 4 ±8 kV direct contact. With 20 configurable GPIO pins, it can support 12x8 keypad array. This operation frees the processor from scanning the keypad for presses and releases, thus saving power and bandwidth of the system.

The LM8330EVM serves as an I²C interface adapter between a host PC, the LM8330, and/or other I²C-compatible devices externally connected to the EVM. The communication between the EVM and host PC is via USB (through a standard type-A to type-B USB cable), while the communication between the EVM, the LM8330, and/or other slave devices is via I²C bus. The EVM converts communication transactions between the USB and I²C. The LM8330EVM is a USB powered device with no external power supply required.

1.1 List of Hardware Items for Operation

To operate the LM8330EVM, the following items are required:

- The LM8330EVM
- Standard type-A to type-B mini-USB cable
- PC with Windows XP, Win7 or later operating system installed

The LM8330EVM contains a USB-to-I²C convertor (MSP430F5529), USB ESD Protection, LDOs, Level Shifters, and the LM8330.

Table 1-1. Device and Package Configurations

| Reference Designator | Device | Package |
|----------------------|-------------------|---------|
| U1 | MSP430F5529IPN | LQFP-80 |
| U2 | LM8330 | YFQ-25 |
| U3 | LP5990TM-1.8/NOPB | YFQ-4 |
| U4 | SN74AVC1T45YZPR | YZP-6 |
| U5 | TPS73533DRB | DRB-8 |
| U6 | TPD4E004DRY | DRY-6 |
| U7 | SN74AVC1T45YZPR | YZP-6 |
| U8 | PCA9306DQER | DQE-8 |

1.2 List of Software Items for Operation

In addition to the hardware items listed in [Table 1-1](#), this software is required:

- Demo GUI Software (LM8330.exe)

The software can be downloaded from the TI website at www.ti.com.

The EVM is recognized by a PC as a generic human interface device (HID), which is supported by the built-in USB/HID drivers of the Windows XP or later operating system. Therefore, it is plug-and-play, and no proprietary USB driver is required.

1.3 Step-by-step Instructions for Operation and Troubleshooting

After downloading and installing the GUI demo software, follow these steps to operate the EVM:

- Plug the USB cable into both the PC and the EVM and wait for the LED to illuminate.
Troubleshooting: if the LED does not illuminate after 30 seconds, follow these steps:
 - Verify that the USB cable is securely connected.
 - If the connection is secure, try a different USB port.
 - If the problem persists, try rebooting the PC.
 - If the problem still persists, try a different USB cable.
 - If these steps did not solve the problem, contact TI technical support for help.
- Run the LM8330EVM GUI software and follow the instructions for the GUI (refer to [Chapter 3](#)).

1.4 Hardware Uninstall Instructions

Unplug the EVM from the USB port to uninstall the hardware from the host PC.

1.5 Software Uninstall Instructions

For Windows operating system, go to Control Panel > Add or Remove Programs to remove the LM8330 GUI software.

EVM Configuration and Description

2.1 EVM Options

The hardware is based on the TI MSP430 16-bit, ultra-low power, mixed signal micro-controller with integrated USB. The PCB is a four-layer board with components mounted on both top and bottom layers (refer to SCHEMATIC).

2.2 LED (D1) Indication of USB Attached

A green LED is mounted adjacent to the USB (J3) connector on the EVM. Every time the USB interface adapter is attached to a PC via a USB cable, and if the host PC detects it and goes through enumeration successfully, the embedded firmware illuminates the LED (D1); otherwise, the LED remains off. After unplugging the USB cable, the LED turns off immediately.

2.3 Input/Output Connector Description

J2 - Input/Output is the keypad IO connector. This connector provides the connection between the keypad and the LM8330.

J3 - Input is the USB input connector. This connector provides USB data communication, 5V Power In and ground (GND) connections.

J4 - Input/Output is the I²C input/output connector. This connector provides access to the I²C SCL and SDA signals for monitoring from an external device.

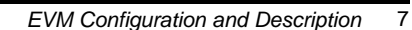
2.4 Test Point Connectors

Test point connectors TP1 through TP4 allow the users to verify internal power rails on the LM8330EVM. describes the functions of all of the test points on the EVM.

Table 2-1. Test Point Descriptions

| Test Point | Signal | Functionality |
|------------|-----------------|------------------------------------------------------------------------|
| TP1 | 1.8V Test Point | Connect to DMM positive terminal to monitor the LM8330 1.8V power rail |
| TP2 | GND Test Point | Connect to DMM negative terminal to monitor the LM8330 1.8V power rail |
| TP3 | GND Test Point | Connect to DMM negative terminal to monitor the LM8330 3.3V power rail |
| TP4 | 3.3V Test Point | Connect to DMM positive terminal to monitor the LM8330 3.3V power rail |

Figure 2-1. LM8330EVM Schematic Sheet1



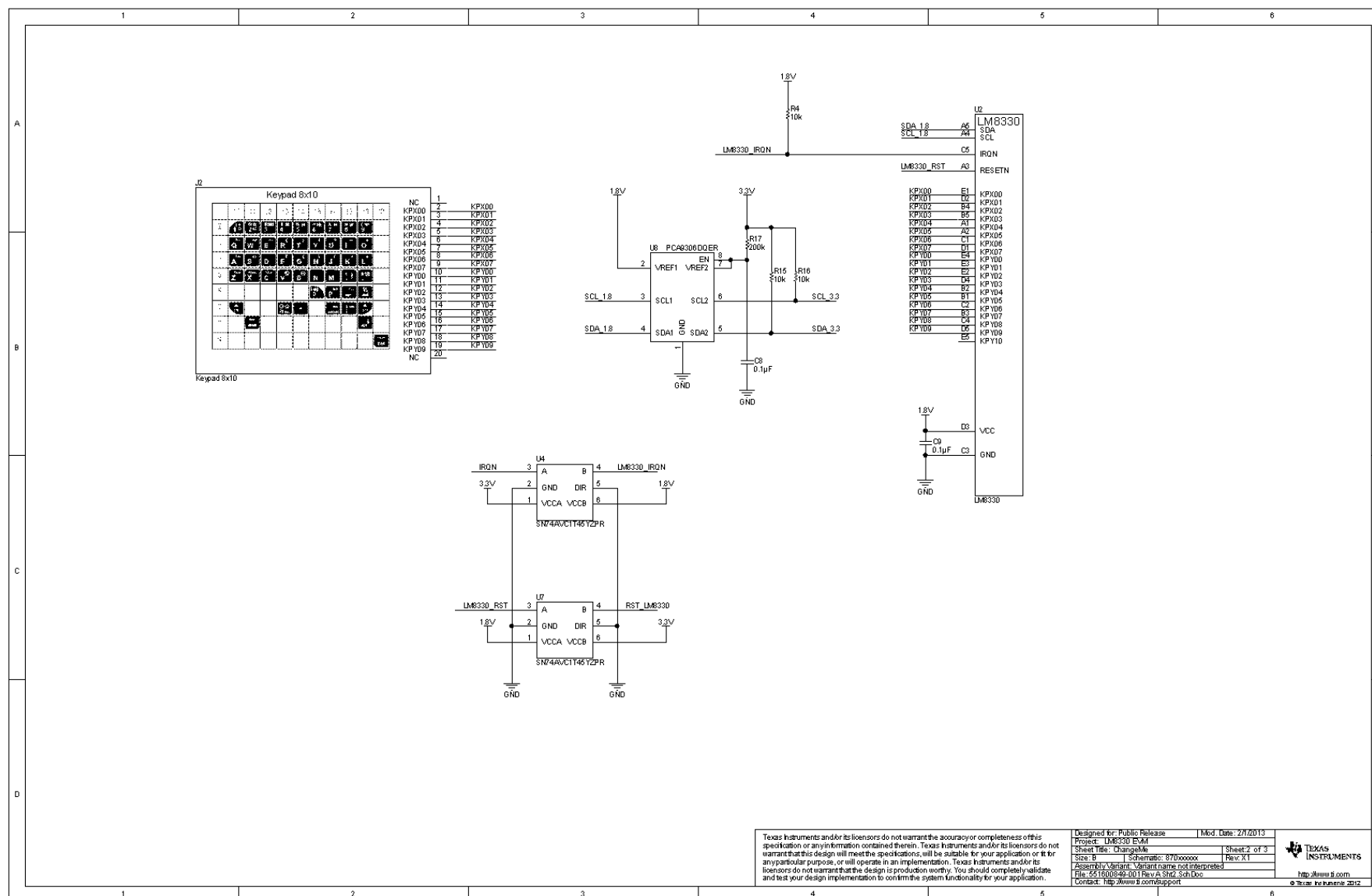


Figure 2-2. LM8330EVM Schematic Sheet2

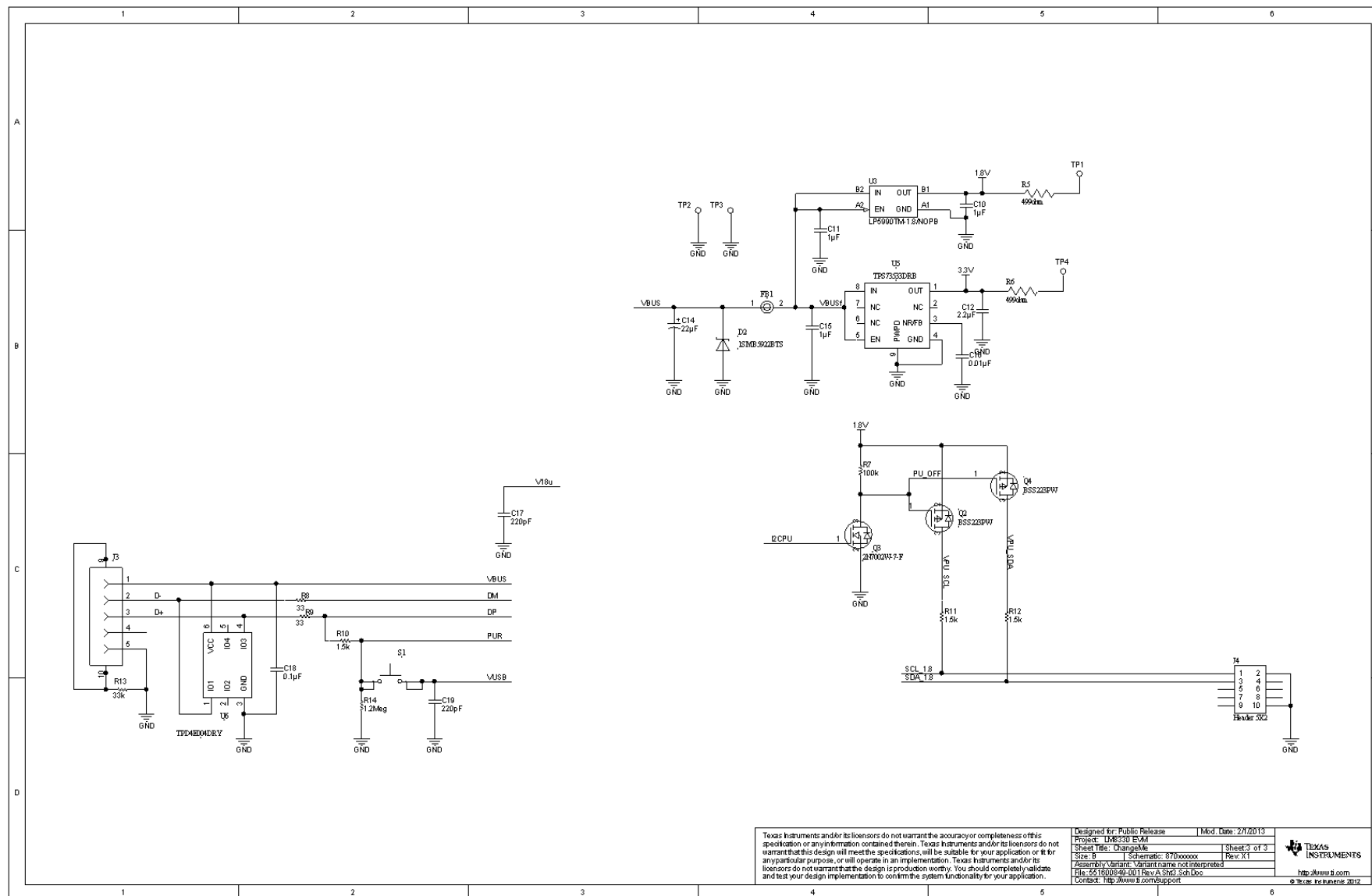


Figure 2-3. LM8330EVM Schematic Sheet3

2.6 Layout

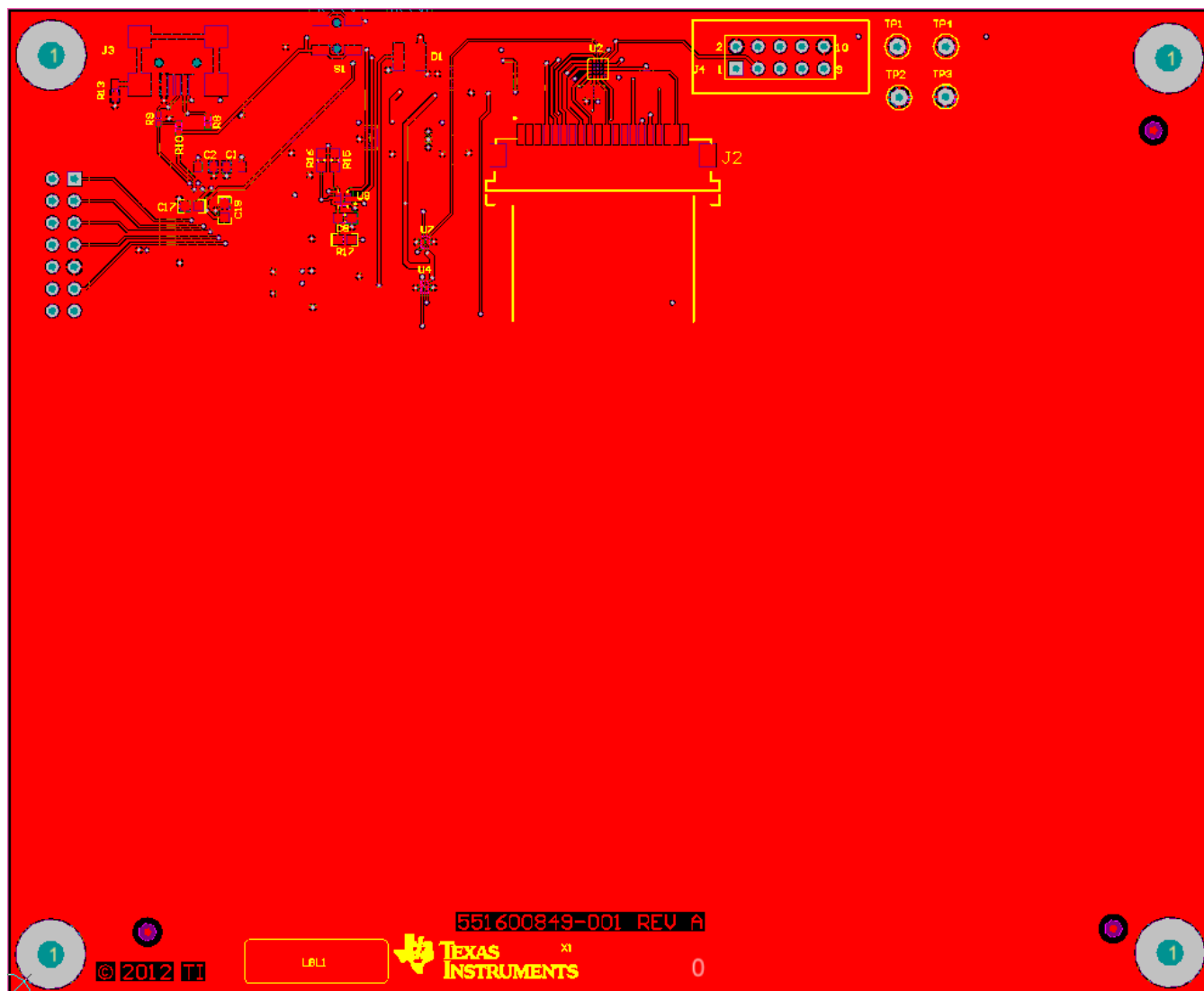


Figure 2-4. LM8330EVM Top Layer

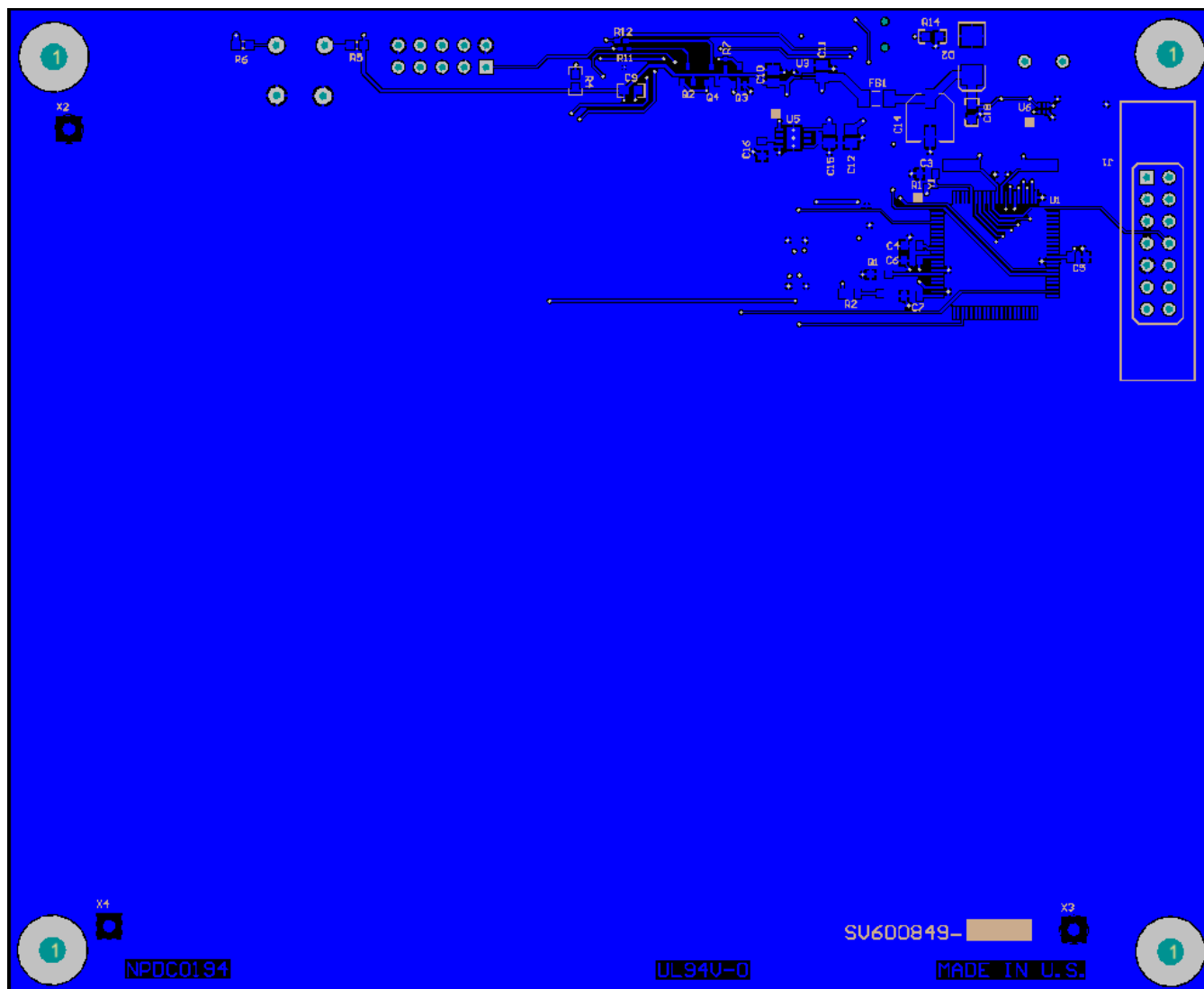


Figure 2-5. LM8330EVM Bottom Layer

2.7 Bill of Materials

Table 2-2. Bill of Materials

| Qty. | Designator | Value | Description | Size | Part Number | Manufacturer |
|------|---------------|-----------------|------------------------------------------------------|----------------------|---------------------|-----------------|
| 2 | C1, C2 | 30pF | CAP, CERM, 30pF, 100V, $\pm 5\%$, C0G/NP0, 0603 | 0603 | GRM1885C2A300JA01D | MuRata |
| 1 | C3 | 2200pF | CAP, CERM, 2200pF, 50V, $\pm 10\%$, X7R, 0603 | 0603 | C0603X222K5RACTU | Kemet |
| 3 | C4, C5, C6 | 0.1 μ F | CAP, CERM, 0.1 μ F, 16V, $\pm 5\%$, X7R, 0603 | 0603 | 0603YC104JAT2A | AVX |
| 1 | C7 | 0.47 μ F | CAP, CERM, 0.47 μ F, 10V, $\pm 10\%$, X7R, 0603 | 0603 | GRM188R71A474KA61D | MuRata |
| 2 | C8, C9 | 0.1 μ F | CAP, CERM, 0.1 μ F, 25V, $\pm 10\%$, X5R, 0603 | 0603 | 06033D104KAT2A | AVX |
| 3 | C10, C11, C15 | 1 μ F | CAP CER 1 μ F 16V 10% X7R 0805 | 0805 | C2012X7R1C105K/1.25 | TDK |
| 1 | C12 | 2.2 μ F | CAP, CERM, 2.2 μ F, 16V, $\pm 10\%$, X5R, 0805 | 0805 | 0805YD225KAT2A | AVX |
| 1 | C14 | 22 μ F | CAP ALUM 22 μ F 10V 20% SMD | 5x5.2mm | EEE-1AA220WR | Panasonic - ECG |
| 1 | C16 | 0.01 μ F | CAP, CERM, 0.01 μ F, 50V, $\pm 10\%$, X7R, 0603 | 0603 | C1608X7R1H103K | TDK |
| 2 | C17, C19 | 220pF | CAP, CERM, 220pF, 50V, $\pm 1\%$, C0G/NP0, 0603 | 0603 | 06035A221FAT2A | AVX |
| 1 | C18 | 0.1 μ F | CAP, CERM, 0.1 μ F, 16V, $\pm 5\%$, X7R, 0603 | 0603 | 0603YC104JAT2A | AVX |
| 1 | D1 | SSF-LXH305GD-TR | LED 3MM RA GREEN DIFFUSED SMD | 0.250 x 0.250 inches | SSF-LXH305GD-TR | Lumex |
| 1 | D2 | 1SMB5922BTS | Diode, Zener, 7.5V, 50-mA, 3W | SMB | 1SMB5922BT3G | On Semi |
| 1 | FB1 | BK1608HS600-T | Bead, Ferrite, SMT, 60 Ω , 800mA | 1206 | BK1608HS600-T | Taiyo Yuden |
| 1 | J1 | PEC07DAAN | Header, Male 2x7 pin, 100mil spacing | 0.100 inch x 2X7 | PEC07DAAN | Sullins |
| 1 | J2 | 1464-1 | Keypad, Membrane, 49 Key, 8x10 matrix | 2.5 x 4.75 inches | 1464-1 | CSI Keyboards |
| 1 | J3 | 1734035-2 | Connector, Recpt, USB-B, Mini, 5-pins, SMT | 0.354 X 0.400 Inches | 1734035-2 | Tyco |
| 1 | J4 | PEC05DAAN | Header, 5-Pin, Dual row | 0.100 inch x 2x5 | PEC05DAAN | Sullins |
| 1 | Q1 | BSS138 | MOSFET, Nch, 50V, 0.22A, 3.5 Ω | SOT23 | BSS138 | Fairchild |
| 2 | Q2, Q4 | BSS223PW | MOSFET, Pch, -20 V, -0.39 A, 1.2 Ω | SOT323 | SI1307DL-T1-E3 | Siliconix |
| 1 | Q3 | 2N7002W-7-F | MOSFET, Nch, 60V, 115mA | SOT323 [SC70] | 2N7002W-7-F | Diodes |
| 1 | R1 | 33k | RES, 33k Ω , 5%, 0.063W, 0402 | 0402 | CRCW040233K0JNED | Vishay-Dale |

Table 2-2. Bill of Materials (continued)

| Qty. | Designator | Value | Description | Size | Part Number | Manufacturer |
|------|---------------|----------------|-------------------------------------------------------------------------|--------------------------|-------------------|--------------|
| 1 | R2 | 200 | RES, 200Ω, 1%, 0.1W, 0603 | 0603 | CRCW0603200RFKEA | Vishay-Dale |
| 3 | R4, R15, R16 | 10k | RES, 10kΩ, 5%, 0.1W, 0603 | 0603 | CRCW060310K0JNEA | Vishay-Dale |
| 2 | R5, R6 | 499Ω | RES, 499Ω, 5%, 0.1W, 0603 | 0603 | CRCW0603499RFKEA | Vishay-Dale |
| 1 | R7 | 100k | RES, 100kΩ, 5%, 0.063W, 0402 | 0402 | CRCW0402100KJNED | Vishay-Dale |
| 2 | R8, R9 | 33 | RES, 33Ω, 5%, 0.063W, 0402 | 0402 | CRCW040233R0JNED | Vishay-Dale |
| 3 | R10, R11, R12 | 1.5k | RES, 1.5kΩ, 5%, 0.063W, 0402 | 0402 | CRCW04021K50JNED | Vishay-Dale |
| 1 | R13 | 33k | RES, 33kΩ, 5%, 0.063W, 0402 | 0402 | CRCW040233K0JNED | Vishay-Dale |
| 1 | R14 | 1.2MΩ | RES, 1.2MΩ, 5%, 0.1W, 0603 | 0603 | CRCW06031M20JNEA | Vishay-Dale |
| 1 | R17 | 200k | RES, 200kΩ, 1%, 0.1W, 0603 | 0603 | CRCW0603200KFKEA | Vishay-Dale |
| 1 | S1 | EVQPSD02K | Switch, SMD Light-Touch, Side Operation | 6.1mm x 4.0mm | EVQPSD02K | Panasonic |
| 2 | TP1, TP4 | Red | Test Point, TH, Miniature, Red | 80mil pad with 40mil via | 5000 | Keystone |
| 2 | TP2, TP3 | Black | Test Point, TH, Miniature, Black | 80mil pad with 40mil via | 5001 | Keystone |
| 1 | U1 | MSP430F5529IPN | IC, Mixed Signal Microcontroller | TQFP-80 | MSP430F5529IPN | TI |
| 1 | U2 | LM8330 | IC, 8x20 Keypad Controller, 25DSBGA | YFQ-25 | LM8330TME | TI |
| 1 | U3 | LP5990 | Micropower 200mA Low Dropout Voltage Regulator, 4-pin DSBGA, Pb-Free | YFQ-4 | LP5990TM-1.8/NOPB | TI |
| 2 | U4, U7 | SN74AVC1T45 | IC BUS TRANSCVR TRI-ST 6DSBGA | YZP-6 | SN74AVC1T45YZPR | TI |
| 1 | U5 | TPS73533DRB | IC, 500mA, Low Quiescent Current, Ultra-Low Noise, High PSRR LDO, 3.3-V | SON-8 | TPS73533DRB | TI |
| 1 | U6 | TPD4E004DRY | IC, 4-Chan ESD-Protection Array | SON-6 | TPD4E004DRY | TI |
| 1 | U8 | PCA9306 | IC VOLT LEVEL TRANSLATOR 8-VSSOP | DQE-8 | PCA9306DQER | TI |
| 1 | Y1 | 24.0 MHz | Crystal, SMT Quart Crystal | 0.484 x 0.190 inch | ECS-240-20-5PX-TR | ECS |

GUI Configuration and Description

3.1 GUI Installation

1. Extract the zip file to a temporary folder.

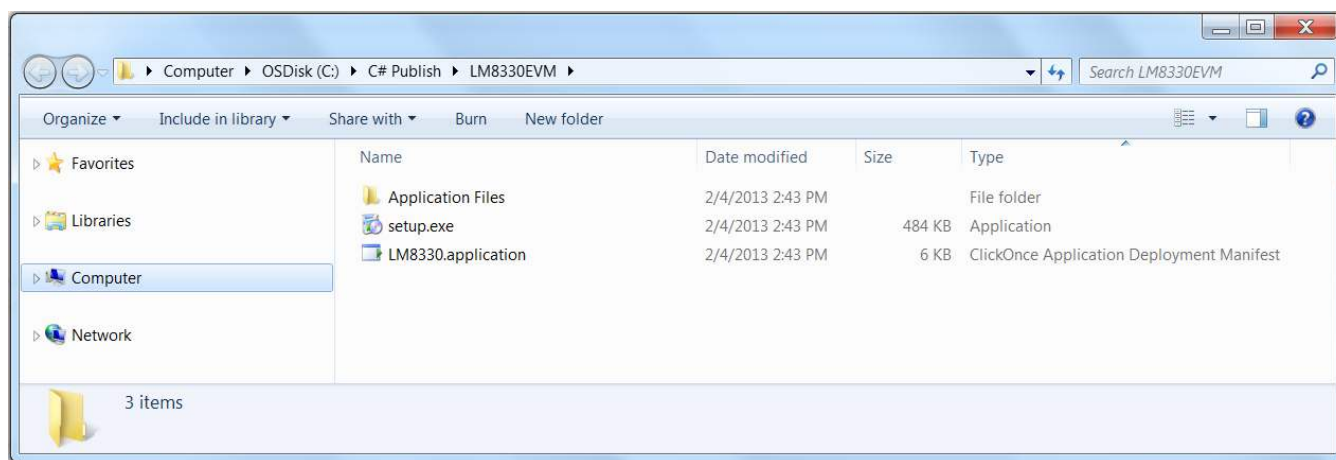


Figure 3-1. LM8330EVM GUI Installation Files

2. Open the setup.exe file and click Install to finish the GUI installation.

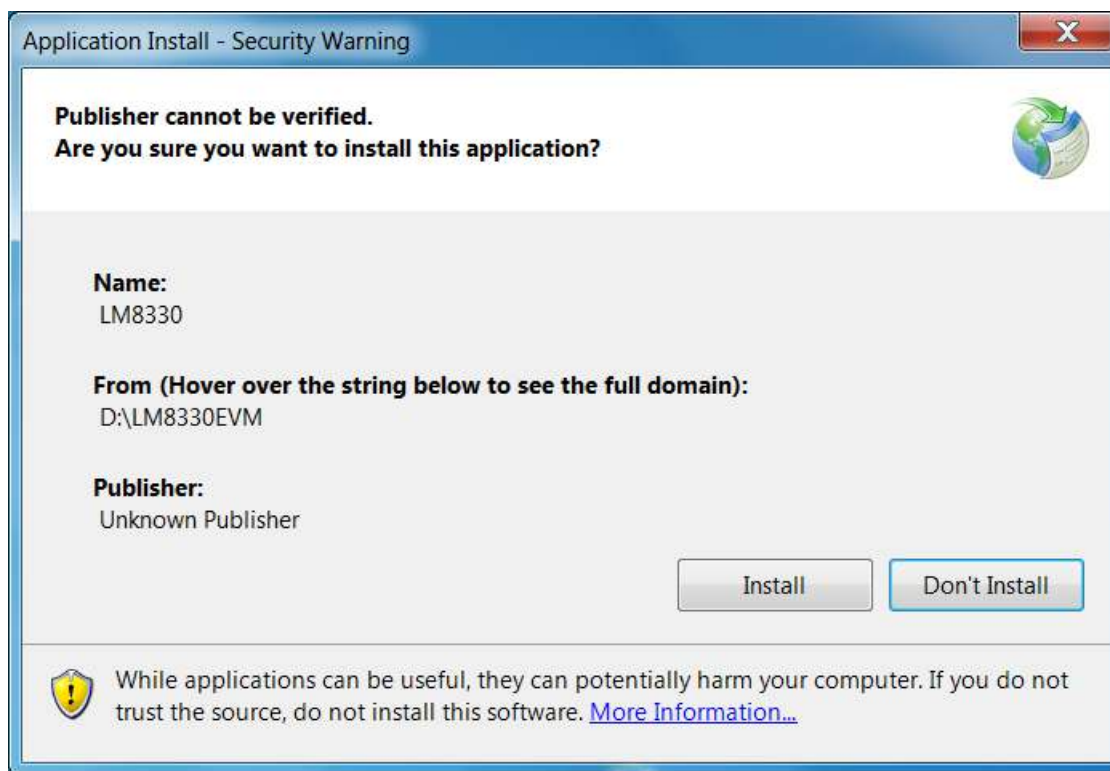


Figure 3-2. LM8330EVM GUI Install

3. Launch the GUI from Start > All Programs > Texas Instruments, Inc > LM8330.

3.2 GUI Functionality

The LM8330 GUI is organized into six sections:

- Control Access: establishes the USB connection between PC and EVM
- Initialization and LED Control: provides access to the LED and initialization of the LM8330
- I2C Access: provides single byte read and write access to any I²C Slave Address
- LM8330 Registers: provides multi-byte read and write access to the LM8330
- Keypad Status : indicates the status of the keypad (key pressed or released)
- Keypad Test: provides test capability to verify each key press & release

3.2.1 Control Access

The control access section is used to establish the USB connection between PC and EVM after the USB cable is connected. Click the Open button to establish the USB connection. The Serial and Firmware Version fields will be updated if the USB connection is properly established. Clicking the Close button will disable USB access, reinitialize the LM8330 to default values, and reset all GUI settings to the default values. Anytime the USB cable is disconnected the Close button will need to be clicked or the program terminated by clicking on the Windows Close ICON in the upper right hand corner of the GUI Window.

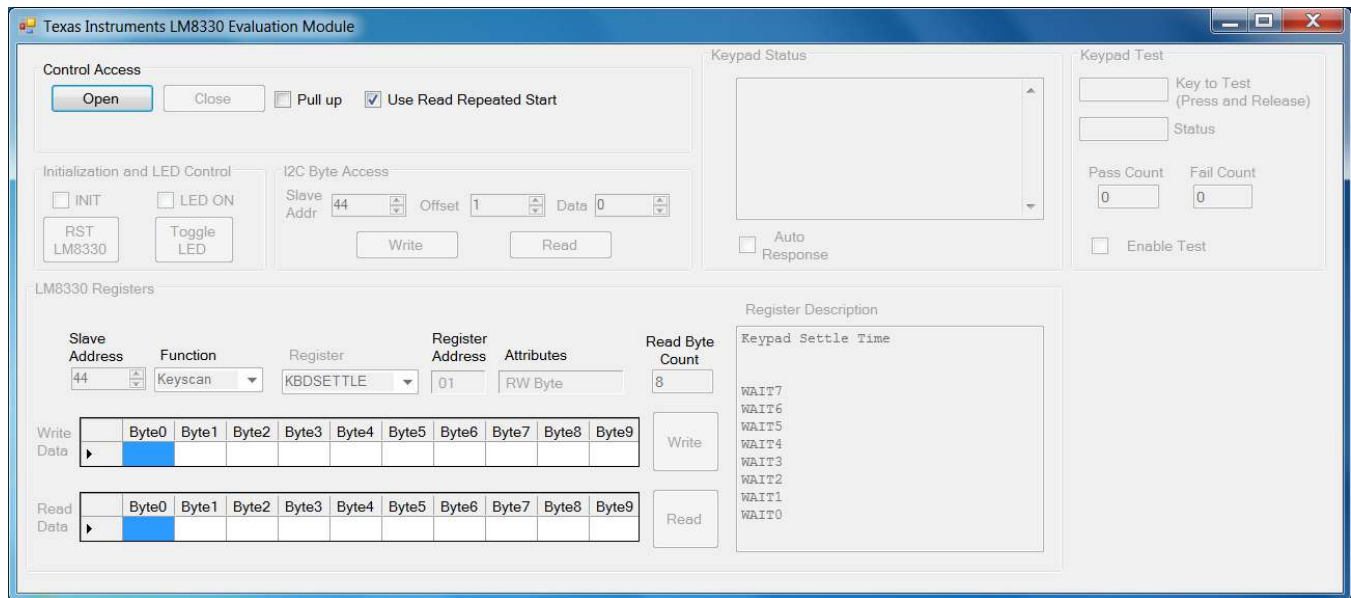


Figure 3-3. LM8330 GUI Initial Screen

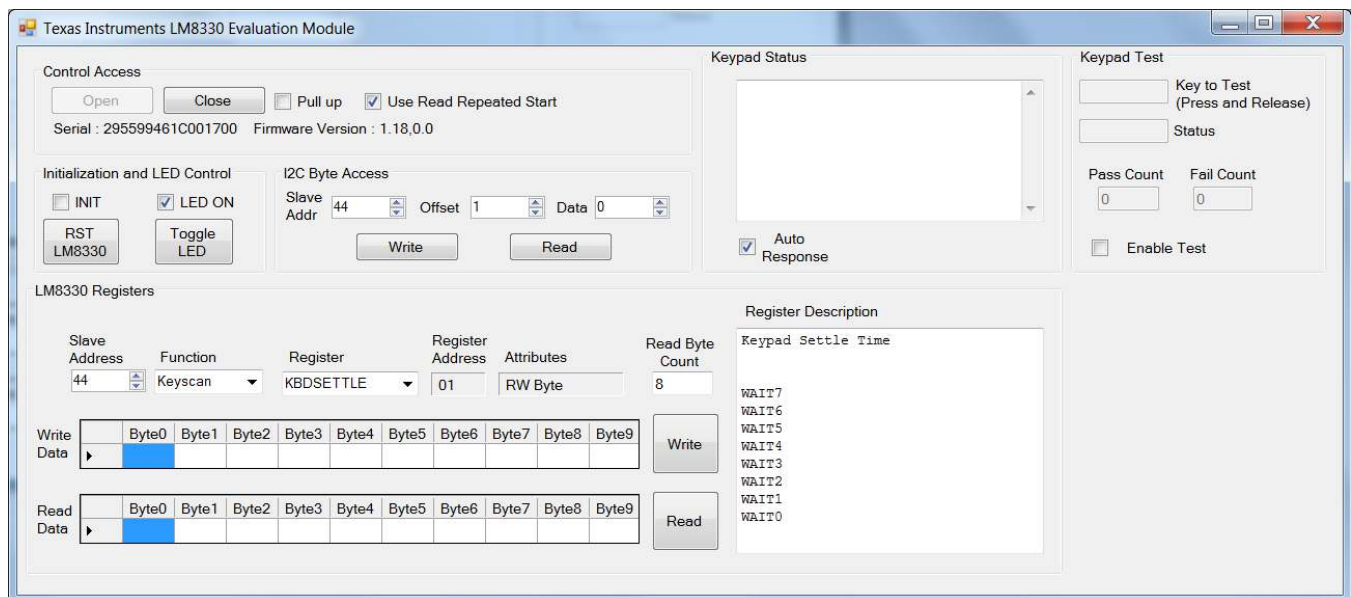


Figure 3-4. LM8330 GUI Open Success Screen

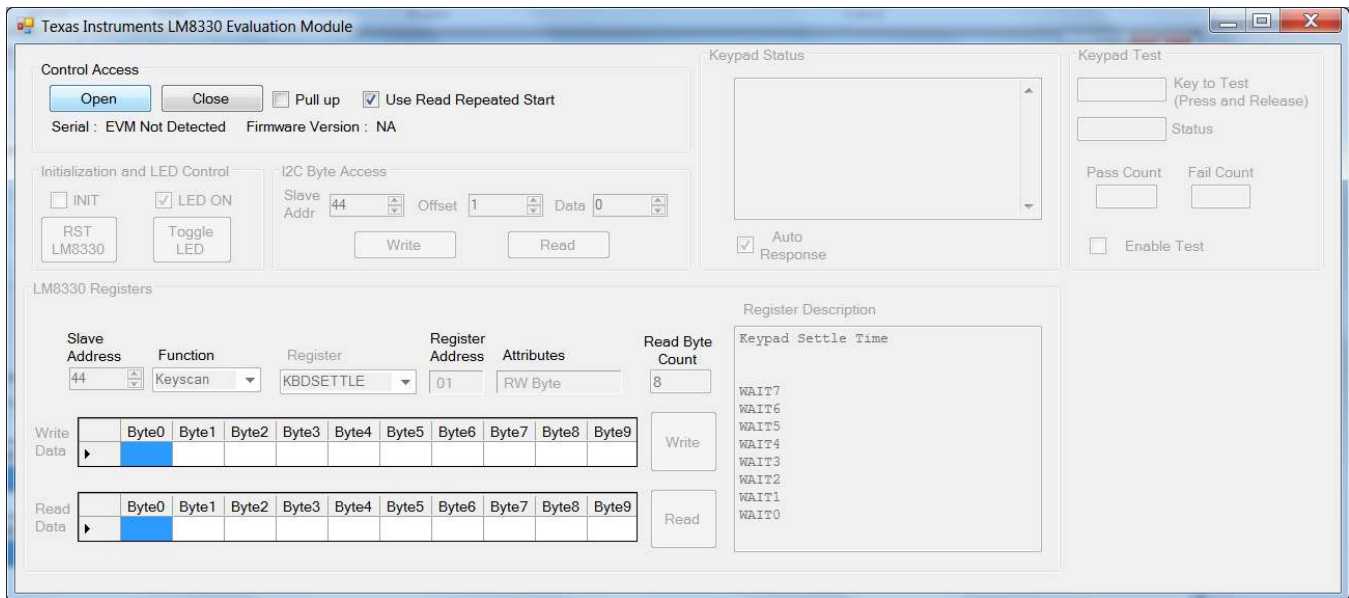


Figure 3-5. LM8330 GUI Open Error Screen

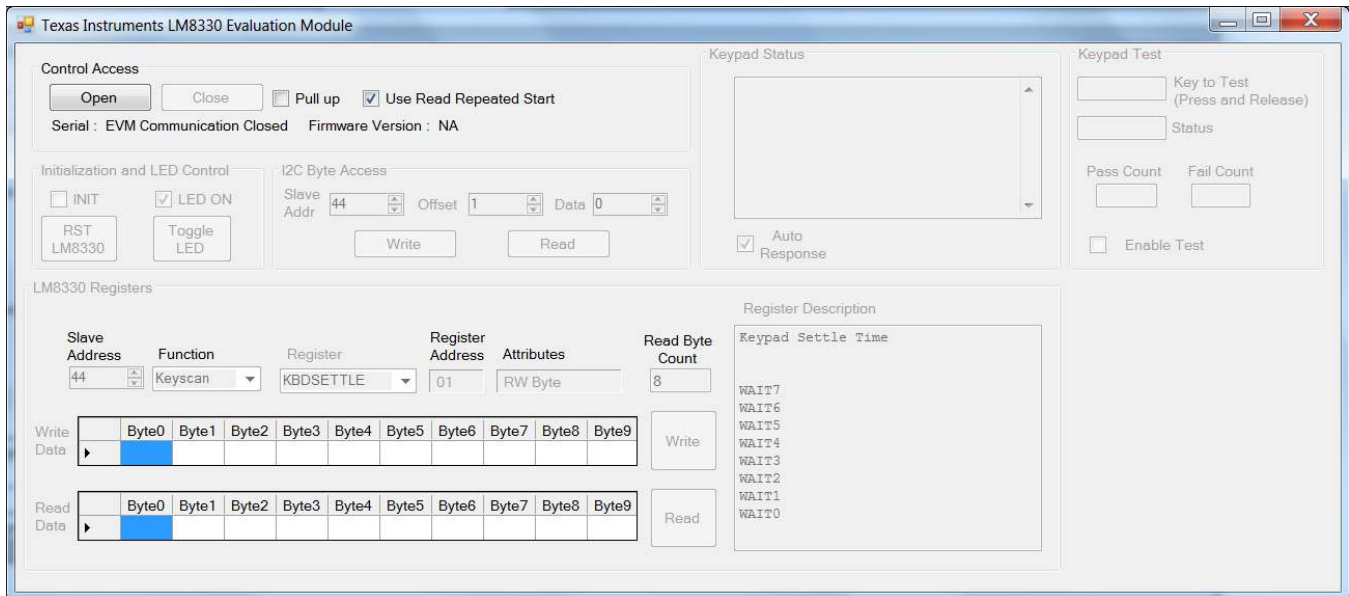


Figure 3-6. LM8330 GUI Close Screen

3.2.2 Initialization and LED Control

The initialization and LED control provides LM8330 initialization, LM8330 reset and control of the LED mounted on the EVM. The initialization checkbox needs to be checked to configure the LM8330 for 8x10 keypad scanning. The LED control is provided to verify USB communication to the EVM.

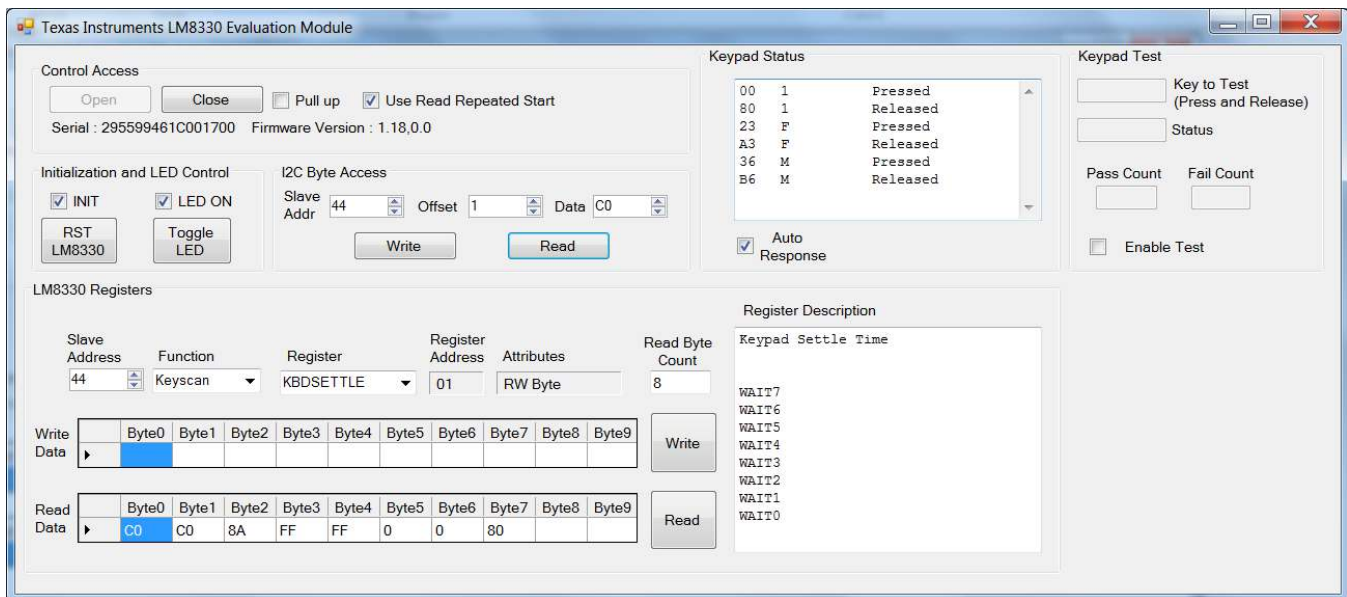


Figure 3-7. LM8330 Initialization Example

3.2.3 I2C Byte Access

The I²C Byte Access section provides single byte read and write access to any slave address. The data field is used for both read and write operation. Note: the Slave Addr, Offset and Data fields are independent from the corresponding fields in the LM8330 registers section.

3.2.4 LM8330 Registers

The LM8330 registers section provides multi-byte read and write access to the LM8330 registers. The LM8330 registers are organized by function as follows:

1. Keyscan: provides access to the Keyscan specific registers
2. PWM: provides access to the PWM specific registers
3. System: provides access to the System registers
4. GPIO: provides access to the GPIO specific registers

When the specific register is selected via the register dialog box the Register Address, Attributes, and Register Description fields are updated with the specific register information. The multi-byte write access will begin at the address indicated in the Register Address field with the number of data bytes entered in the Write Data grid beginning with Byte 0 (Note: the maximum number of bytes written is limited to 10) when the Write button is clicked. The multi-byte read access will begin at the address indicated in the Register Address field for the number of bytes entered in the Read Byte Count box (Note: the maximum number of bytes read is limited to 10) when the Read button is clicked.

3.2.5 Keypad Status

The Keypad Status section provides direct reporting of the Key Code, Key Value, and Key State. This information is automatically updated by responding to the LM8330 interrupt (IRQN). If desired the interrupt response can be disabled by unchecking the Auto Response checkbox. When operating in this mode the user will need to manually read the EVTCODE register to ensure that no Key Codes are lost by overflow of the EVTCODE buffer.

3.2.6 Keypad Test

The Keypad Test Section provides test capability of the LM8330EVM Keypad. The keypad test is executed as follows:

- Initialize the LM8330 by clicking on the INIT box in the Initialization and LED Control section
- Enable the Keypad test by clicking on the Enable Test box in the Keypad Test section
- Pressing/releasing the Key indicated in the Key to Test box in the Keypad Test section

The keypad test begins with the "1" key and advances through all ten columns and all five rows of the keypad (refer to [Figure 3-8](#)). The Status, Pass Count, and Fail Count fields are updated as the test progresses (Note: all 49 keys must be pressed/released to complete the keypad test refer to [Figure 3-9](#) and [Figure 3-10](#)).

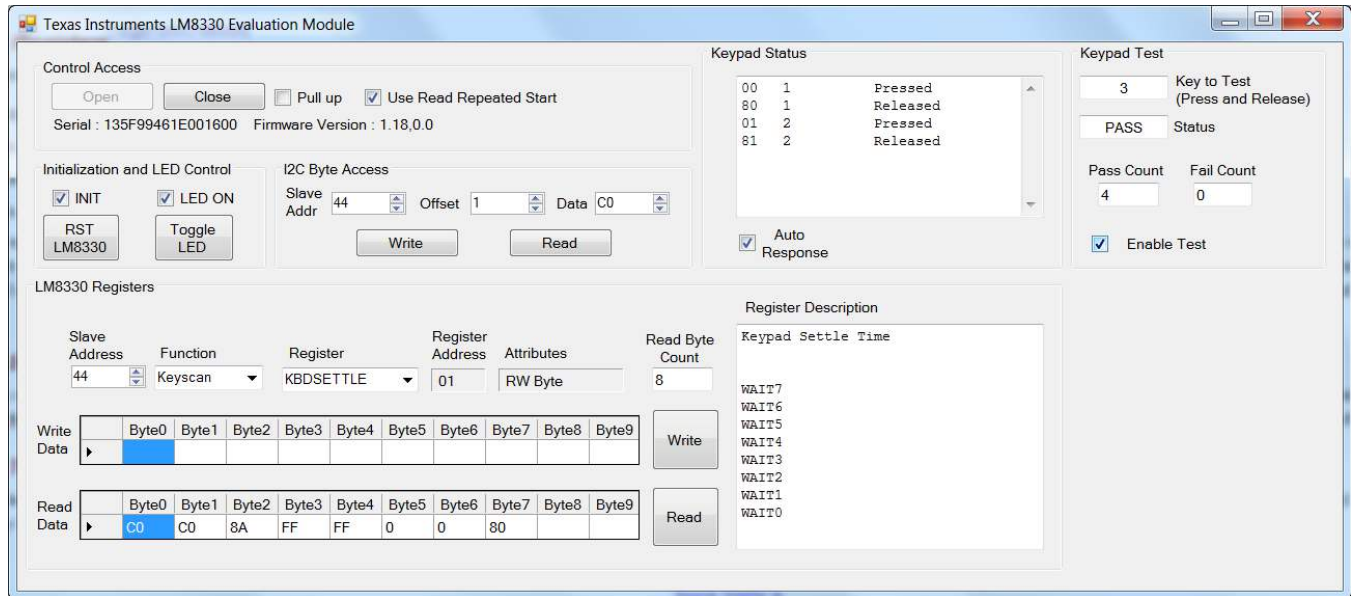


Figure 3-8. LM8330 GUI Keypad Test

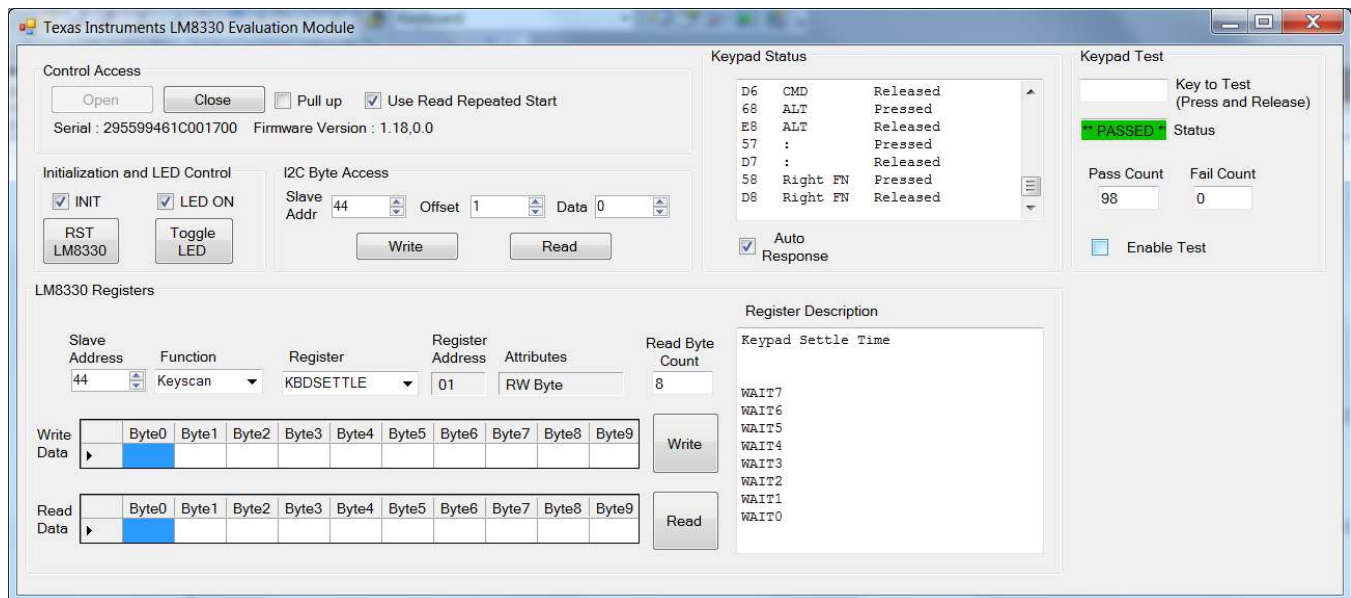


Figure 3-9. LM8330 GUI Keypad Test Passed Example

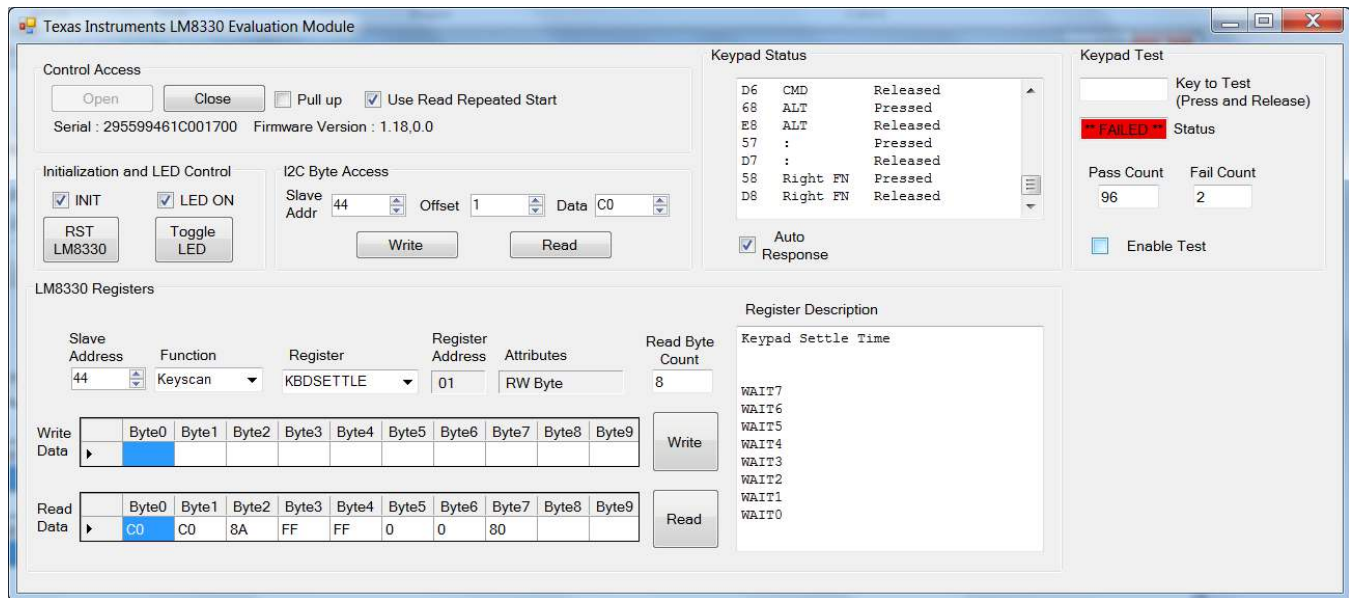


Figure 3-10. LM8330 GUI Keypad Test Failed Example

Related Documentation from Texas Instruments

LM8330 I²C-Compatible Keypad Controller with GPIO, PWM and IEC61000 ESD Protection data sheet ()

EVALUATION BOARD/KIT/MODULE (EVM) ADDITIONAL TERMS

Texas Instruments (TI) provides the enclosed Evaluation Board/Kit/Module (EVM) under the following conditions:

The user assumes all responsibility and liability for proper and safe handling of the goods. Further, the user indemnifies TI from all claims arising from the handling or use of the goods.

Should this evaluation board/kit not meet the specifications indicated in the User's Guide, the board/kit may be returned within 30 days from the date of delivery for a full refund. THE FOREGOING LIMITED WARRANTY IS THE EXCLUSIVE WARRANTY MADE BY SELLER TO BUYER AND IS IN LIEU OF ALL OTHER WARRANTIES, EXPRESSED, IMPLIED, OR STATUTORY, INCLUDING ANY WARRANTY OF MERCHANTABILITY OR FITNESS FOR ANY PARTICULAR PURPOSE. EXCEPT TO THE EXTENT OF THE INDEMNITY SET FORTH ABOVE, NEITHER PARTY SHALL BE LIABLE TO THE OTHER FOR ANY INDIRECT, SPECIAL, INCIDENTAL, OR CONSEQUENTIAL DAMAGES.

Please read the User's Guide and, specifically, the Warnings and Restrictions notice in the User's Guide prior to handling the product. This notice contains important safety information about temperatures and voltages. For additional information on TI's environmental and/or safety programs, please visit www.ti.com/esh or contact TI.

No license is granted under any patent right or other intellectual property right of TI covering or relating to any machine, process, or combination in which such TI products or services might be or are used. TI currently deals with a variety of customers for products, and therefore our arrangement with the user is not exclusive. TI assumes no liability for applications assistance, customer product design, software performance, or infringement of patents or services described herein.

REGULATORY COMPLIANCE INFORMATION

As noted in the EVM User's Guide and/or EVM itself, this EVM and/or accompanying hardware may or may not be subject to the Federal Communications Commission (FCC) and Industry Canada (IC) rules.

For EVMs **not** subject to the above rules, this evaluation board/kit/module is intended for use for ENGINEERING DEVELOPMENT, DEMONSTRATION OR EVALUATION PURPOSES ONLY and is not considered by TI to be a finished end product fit for general consumer use. It generates, uses, and can radiate radio frequency energy and has not been tested for compliance with the limits of computing devices pursuant to part 15 of FCC or ICES-003 rules, which are designed to provide reasonable protection against radio frequency interference. Operation of the equipment may cause interference with radio communications, in which case the user at his own expense will be required to take whatever measures may be required to correct this interference.

General Statement for EVMs including a radio

User Power/Frequency Use Obligations: This radio is intended for development/professional use only in legally allocated frequency and power limits. Any use of radio frequencies and/or power availability of this EVM and its development application(s) must comply with local laws governing radio spectrum allocation and power limits for this evaluation module. It is the user's sole responsibility to only operate this radio in legally acceptable frequency space and within legally mandated power limitations. Any exceptions to this are strictly prohibited and unauthorized by Texas Instruments unless user has obtained appropriate experimental/development licenses from local regulatory authorities, which is responsibility of user including its acceptable authorization.

For EVMs annotated as FCC – FEDERAL COMMUNICATIONS COMMISSION Part 15 Compliant

Caution

This device complies with part 15 of the FCC Rules. Operation is subject to the following two conditions: (1) This device may not cause harmful interference, and (2) this device must accept any interference received, including interference that may cause undesired operation.

Changes or modifications not expressly approved by the party responsible for compliance could void the user's authority to operate the equipment.

FCC Interference Statement for Class A EVM devices

This equipment has been tested and found to comply with the limits for a Class A digital device, pursuant to part 15 of the FCC Rules. These limits are designed to provide reasonable protection against harmful interference when the equipment is operated in a commercial environment. This equipment generates, uses, and can radiate radio frequency energy and, if not installed and used in accordance with the instruction manual, may cause harmful interference to radio communications. Operation of this equipment in a residential area is likely to cause harmful interference in which case the user will be required to correct the interference at his own expense.

FCC Interference Statement for Class B EVM devices

This equipment has been tested and found to comply with the limits for a Class B digital device, pursuant to part 15 of the FCC Rules. These limits are designed to provide reasonable protection against harmful interference in a residential installation. This equipment generates, uses and can radiate radio frequency energy and, if not installed and used in accordance with the instructions, may cause harmful interference to radio communications. However, there is no guarantee that interference will not occur in a particular installation. If this equipment does cause harmful interference to radio or television reception, which can be determined by turning the equipment off and on, the user is encouraged to try to correct the interference by one or more of the following measures:

- Reorient or relocate the receiving antenna.
- Increase the separation between the equipment and receiver.
- Connect the equipment into an outlet on a circuit different from that to which the receiver is connected.
- Consult the dealer or an experienced radio/TV technician for help.

For EVMs annotated as IC – INDUSTRY CANADA Compliant

This Class A or B digital apparatus complies with Canadian ICES-003.

Changes or modifications not expressly approved by the party responsible for compliance could void the user's authority to operate the equipment.

Concerning EVMs including radio transmitters

This device complies with Industry Canada licence-exempt RSS standard(s). Operation is subject to the following two conditions: (1) this device may not cause interference, and (2) this device must accept any interference, including interference that may cause undesired operation of the device.

Concerning EVMs including detachable antennas

Under Industry Canada regulations, this radio transmitter may only operate using an antenna of a type and maximum (or lesser) gain approved for the transmitter by Industry Canada. To reduce potential radio interference to other users, the antenna type and its gain should be so chosen that the equivalent isotropically radiated power (e.i.r.p.) is not more than that necessary for successful communication.

This radio transmitter has been approved by Industry Canada to operate with the antenna types listed in the user guide with the maximum permissible gain and required antenna impedance for each antenna type indicated. Antenna types not included in this list, having a gain greater than the maximum gain indicated for that type, are strictly prohibited for use with this device.

Cet appareil numérique de la classe A ou B est conforme à la norme NMB-003 du Canada.

Les changements ou les modifications pas expressément approuvés par la partie responsable de la conformité ont pu vider l'autorité de l'utilisateur pour actionner l'équipement.

Concernant les EVMs avec appareils radio

Le présent appareil est conforme aux CNR d'Industrie Canada applicables aux appareils radio exempts de licence. L'exploitation est autorisée aux deux conditions suivantes : (1) l'appareil ne doit pas produire de brouillage, et (2) l'utilisateur de l'appareil doit accepter tout brouillage radioélectrique subi, même si le brouillage est susceptible d'en compromettre le fonctionnement.

Concernant les EVMs avec antennes détachables

Conformément à la réglementation d'Industrie Canada, le présent émetteur radio peut fonctionner avec une antenne d'un type et d'un gain maximal (ou inférieur) approuvé pour l'émetteur par Industrie Canada. Dans le but de réduire les risques de brouillage radioélectrique à l'intention des autres utilisateurs, il faut choisir le type d'antenne et son gain de sorte que la puissance isotrope rayonnée équivalente (p.i.r.e.) ne dépasse pas l'intensité nécessaire à l'établissement d'une communication satisfaisante.

Le présent émetteur radio a été approuvé par Industrie Canada pour fonctionner avec les types d'antenne énumérés dans le manuel d'usage et ayant un gain admissible maximal et l'impédance requise pour chaque type d'antenne. Les types d'antenne non inclus dans cette liste, ou dont le gain est supérieur au gain maximal indiqué, sont strictement interdits pour l'exploitation de l'émetteur.

【Important Notice for Users of this Product in Japan】

This development kit is NOT certified as Confirming to Technical Regulations of Radio Law of Japan

If you use this product in Japan, you are required by Radio Law of Japan to follow the instructions below with respect to this product:

1. Use this product in a shielded room or any other test facility as defined in the notification #173 issued by Ministry of Internal Affairs and Communications on March 28, 2006, based on Sub-section 1.1 of Article 6 of the Ministry's Rule for Enforcement of Radio Law of Japan,
2. Use this product only after you obtained the license of Test Radio Station as provided in Radio Law of Japan with respect to this product, or
3. Use of this product only after you obtained the Technical Regulations Conformity Certification as provided in Radio Law of Japan with respect to this product. Also, please do not transfer this product, unless you give the same notice above to the transferee. Please note that if you could not follow the instructions above, you will be subject to penalties of Radio Law of Japan.

Texas Instruments Japan Limited
(address) 24-1, Nishi-Shinjuku 6 chome, Shinjuku-ku, Tokyo, Japan

<http://www.tij.co.jp>

【ご使用にあたっての注】

本開発キットは技術基準適合証明を受けておりません。

本製品のご使用に際しては、電波法遵守のため、以下のいずれかの措置を取っていただく必要がありますのでご注意ください。

1. 電波法施行規則第6条第1項第1号に基づく平成18年3月28日総務省告示第173号で定められた電波暗室等の試験設備でご使用いただく。
2. 実験局の免許を取得後ご使用いただく。
3. 技術基準適合証明を取得後ご使用いただく。

なお、本製品は、上記の「ご使用にあたっての注意」を譲渡先、移転先に通知しない限り、譲渡、移転できないものとします。

上記を遵守頂けない場合は、電波法の罰則が適用される可能性があることをご留意ください。

日本テキサス・インスツルメンツ株式会社

東京都新宿区西新宿 6 丁目 2 4 番 1 号

西新宿三井ビル

<http://www.tij.co.jp>

EVALUATION BOARD/KIT/MODULE (EVM) WARNINGS, RESTRICTIONS AND DISCLAIMERS

For Feasibility Evaluation Only, in Laboratory/Development Environments. Unless otherwise indicated, this EVM is not a finished electrical equipment and not intended for consumer use. It is intended solely for use for preliminary feasibility evaluation in laboratory/development environments by technically qualified electronics experts who are familiar with the dangers and application risks associated with handling electrical mechanical components, systems and subsystems. It should not be used as all or part of a finished end product.

Your Sole Responsibility and Risk. You acknowledge, represent and agree that:

1. You have unique knowledge concerning Federal, State and local regulatory requirements (including but not limited to Food and Drug Administration regulations, if applicable) which relate to your products and which relate to your use (and/or that of your employees, affiliates, contractors or designees) of the EVM for evaluation, testing and other purposes.
2. You have full and exclusive responsibility to assure the safety and compliance of your products with all such laws and other applicable regulatory requirements, and also to assure the safety of any activities to be conducted by you and/or your employees, affiliates, contractors or designees, using the EVM. Further, you are responsible to assure that any interfaces (electronic and/or mechanical) between the EVM and any human body are designed with suitable isolation and means to safely limit accessible leakage currents to minimize the risk of electrical shock hazard.
3. You will employ reasonable safeguards to ensure that your use of the EVM will not result in any property damage, injury or death, even if the EVM should fail to perform as described or expected.
4. You will take care of proper disposal and recycling of the EVM's electronic components and packing materials.

Certain Instructions. It is important to operate this EVM within TI's recommended specifications and environmental considerations per the user guidelines. Exceeding the specified EVM ratings (including but not limited to input and output voltage, current, power, and environmental ranges) may cause property damage, personal injury or death. If there are questions concerning these ratings please contact a TI field representative prior to connecting interface electronics including input power and intended loads. Any loads applied outside of the specified output range may result in unintended and/or inaccurate operation and/or possible permanent damage to the EVM and/or interface electronics. Please consult the EVM User's Guide prior to connecting any load to the EVM output. If there is uncertainty as to the load specification, please contact a TI field representative. During normal operation, some circuit components may have case temperatures greater than 60°C as long as the input and output are maintained at a normal ambient operating temperature. These components include but are not limited to linear regulators, switching transistors, pass transistors, and current sense resistors which can be identified using the EVM schematic located in the EVM User's Guide. When placing measurement probes near these devices during normal operation, please be aware that these devices may be very warm to the touch. As with all electronic evaluation tools, only qualified personnel knowledgeable in electronic measurement and diagnostics normally found in development environments should use these EVMs.

Agreement to Defend, Indemnify and Hold Harmless. You agree to defend, indemnify and hold TI, its licensors and their representatives harmless from and against any and all claims, damages, losses, expenses, costs and liabilities (collectively, "Claims") arising out of or in connection with any use of the EVM that is not in accordance with the terms of the agreement. This obligation shall apply whether Claims arise under law of tort or contract or any other legal theory, and even if the EVM fails to perform as described or expected.

Safety-Critical or Life-Critical Applications. If you intend to evaluate the components for possible use in safety critical applications (such as life support) where a failure of the TI product would reasonably be expected to cause severe personal injury or death, such as devices which are classified as FDA Class III or similar classification, then you must specifically notify TI of such intent and enter into a separate Assurance and Indemnity Agreement.

Mailing Address: Texas Instruments, Post Office Box 655303, Dallas, Texas 75265
Copyright © 2012, Texas Instruments Incorporated

IMPORTANT NOTICE

Texas Instruments Incorporated and its subsidiaries (TI) reserve the right to make corrections, enhancements, improvements and other changes to its semiconductor products and services per JESD46, latest issue, and to discontinue any product or service per JESD48, latest issue. Buyers should obtain the latest relevant information before placing orders and should verify that such information is current and complete. All semiconductor products (also referred to herein as "components") are sold subject to TI's terms and conditions of sale supplied at the time of order acknowledgment.

TI warrants performance of its components to the specifications applicable at the time of sale, in accordance with the warranty in TI's terms and conditions of sale of semiconductor products. Testing and other quality control techniques are used to the extent TI deems necessary to support this warranty. Except where mandated by applicable law, testing of all parameters of each component is not necessarily performed.

TI assumes no liability for applications assistance or the design of Buyers' products. Buyers are responsible for their products and applications using TI components. To minimize the risks associated with Buyers' products and applications, Buyers should provide adequate design and operating safeguards.

TI does not warrant or represent that any license, either express or implied, is granted under any patent right, copyright, mask work right, or other intellectual property right relating to any combination, machine, or process in which TI components or services are used. Information published by TI regarding third-party products or services does not constitute a license to use such products or services or a warranty or endorsement thereof. Use of such information may require a license from a third party under the patents or other intellectual property of the third party, or a license from TI under the patents or other intellectual property of TI.

Reproduction of significant portions of TI information in TI data books or data sheets is permissible only if reproduction is without alteration and is accompanied by all associated warranties, conditions, limitations, and notices. TI is not responsible or liable for such altered documentation. Information of third parties may be subject to additional restrictions.

Resale of TI components or services with statements different from or beyond the parameters stated by TI for that component or service voids all express and any implied warranties for the associated TI component or service and is an unfair and deceptive business practice. TI is not responsible or liable for any such statements.

Buyer acknowledges and agrees that it is solely responsible for compliance with all legal, regulatory and safety-related requirements concerning its products, and any use of TI components in its applications, notwithstanding any applications-related information or support that may be provided by TI. Buyer represents and agrees that it has all the necessary expertise to create and implement safeguards which anticipate dangerous consequences of failures, monitor failures and their consequences, lessen the likelihood of failures that might cause harm and take appropriate remedial actions. Buyer will fully indemnify TI and its representatives against any damages arising out of the use of any TI components in safety-critical applications.

In some cases, TI components may be promoted specifically to facilitate safety-related applications. With such components, TI's goal is to help enable customers to design and create their own end-product solutions that meet applicable functional safety standards and requirements. Nonetheless, such components are subject to these terms.

No TI components are authorized for use in FDA Class III (or similar life-critical medical equipment) unless authorized officers of the parties have executed a special agreement specifically governing such use.

Only those TI components which TI has specifically designated as military grade or "enhanced plastic" are designed and intended for use in military/aerospace applications or environments. Buyer acknowledges and agrees that any military or aerospace use of TI components which have **not** been so designated is solely at the Buyer's risk, and that Buyer is solely responsible for compliance with all legal and regulatory requirements in connection with such use.

TI has specifically designated certain components as meeting ISO/TS16949 requirements, mainly for automotive use. In any case of use of non-designated products, TI will not be responsible for any failure to meet ISO/TS16949.

Products

| | |
|------------------------------|--------------------------------------------------------------------------------------|
| Audio | www.ti.com/audio |
| Amplifiers | amplifier.ti.com |
| Data Converters | dataconverter.ti.com |
| DLP® Products | www.dlp.com |
| DSP | dsp.ti.com |
| Clocks and Timers | www.ti.com/clocks |
| Interface | interface.ti.com |
| Logic | logic.ti.com |
| Power Mgmt | power.ti.com |
| Microcontrollers | microcontroller.ti.com |
| RFID | www.ti-rfid.com |
| OMAP Applications Processors | www.ti.com/omap |
| Wireless Connectivity | www.ti.com/wirelessconnectivity |

Applications

| | |
|-------------------------------|------------------------------------------------------------------------------------------|
| Automotive and Transportation | www.ti.com/automotive |
| Communications and Telecom | www.ti.com/communications |
| Computers and Peripherals | www.ti.com/computers |
| Consumer Electronics | www.ti.com/consumer-apps |
| Energy and Lighting | www.ti.com/energy |
| Industrial | www.ti.com/industrial |
| Medical | www.ti.com/medical |
| Security | www.ti.com/security |
| Space, Avionics and Defense | www.ti.com/space-avionics-defense |
| Video and Imaging | www.ti.com/video |

TI E2E Community

e2e.ti.com