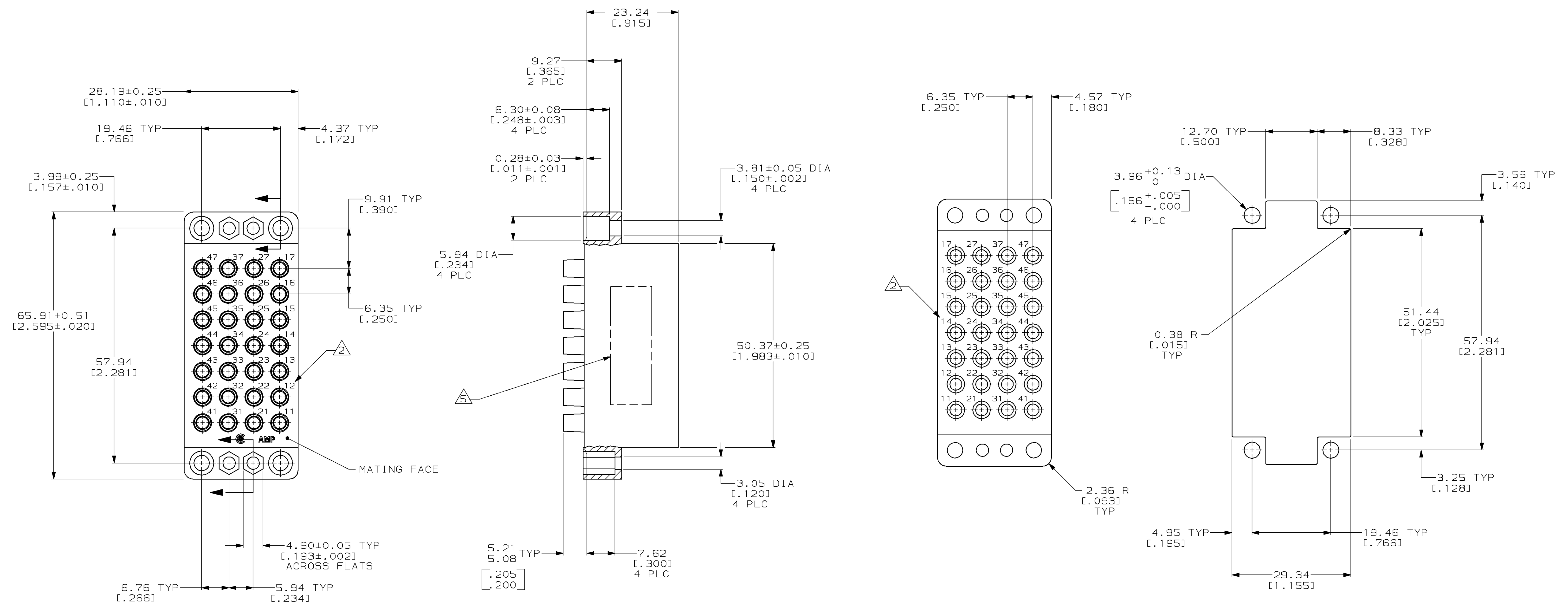


LOC		DIST		REVISIONS			
P	LTR	DESCRIPTION	DATE	OWN	APVD		
E		REDRAWN W/O CHANGE PER EC 0020-289-96	23 MAY 97	-	-		
F		REV PER EC 0320-348-97	18 NOV 97	PB	GS		



RECOMMENDED PANEL CUTOUT

- △ PHENOLIC, BLACK, PER MIL-M-14, TYPE CFG.
- △ CAVITY IDENTIFICATION, RAISED, BOTH FACES.
- 3. CONNECTOR WILL ACCEPT 28 TYPE II OR III+, SIZE 16, SOCKET CONTACTS.
- 4. CONNECTOR MATES WITH HOUSING 205689-2.
- △ PART NUMBER, DATE CODE OPTIONAL, MARKED IN THIS APPROXIMATE AREA.

205690-2  
 PART NUMBER

THIS DRAWING IS A CONTROLLED DOCUMENT.		OWN D. HARDY	23 MAY 97	AMP <b>AMP</b> AMP Incorporated Harrisburg, PA 17105-3508
DIMENSIONS: mm (INCHES)		CHK R. STONE	26 JUN 97	
TOLERANCES UNLESS OTHERWISE SPECIFIED:		APP'D G. STEINHAUER	02 SEP 97	NAME BLOCK, SOCKET, 28 POSITION, SPECIAL, M SERIES
0 PLC ±.005		PRODUCT SPEC		
1 PLC ±.005		APPLICATION SPEC		RESTRICTED TO
2 PLC ±.013 (.005)		SIZE		A1
3 PLC ±.013 (.005)		CAGE CODE		00779
4 PLC ±.013 (.005)		DRAWING NO		205690
ANGLES ±.013 (.005)		WEIGHT		-
FINISH -		CUSTOMER DRAWING		SCALE 2:1
		SHEET 1 OF 1		REV F