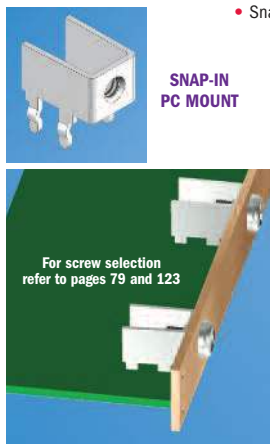
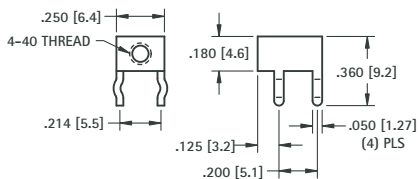


# SNAP-IN THREADED PC MOUNT BRACKETS

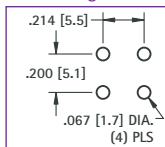
• Snaps in for wave soldering • Reduces assembly time • Easily mount into predrilled or punched holes • Stable no rock design



## 4-40 THREAD



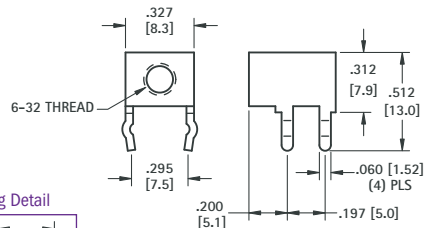
### Mounting Detail



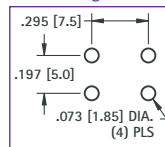
**MATERIAL:** .032 (.81) Brass, Tin Plate

**CAT. NO. 7774**

## 6-32 THREAD



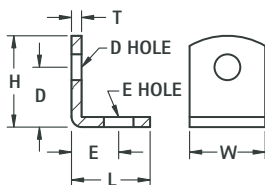
### Mounting Detail



**MATERIAL:** .032 (.81) Brass, Tin Plate

**CAT. NO. 7779**

# UNIVERSAL CLEAR HOLE BRACKETS



| CAT. NO.    | H            | L           | W           | D           | D HOLE DIAMETER | E           | E HOLE DIAMETER | T           | MATERIAL | FINISH |
|-------------|--------------|-------------|-------------|-------------|-----------------|-------------|-----------------|-------------|----------|--------|
| <b>633</b>  | .375 (9.5)   | .375 (9.5)  | .281 (7.1)  | .218 (5.5)  | .140 (3.6)      | .218 (5.5)  | .140 (3.6)      | .032 (.81)  | Brass    | Nickel |
| <b>613</b>  | .390 (9.9)   | .453 (11.5) | .375 (9.5)  | .234 (5.9)  | .147 (3.7)      | .299 (7.6)  | .128 (3.3)      | .032 (.81)  | Brass    | Nickel |
| <b>615</b>  | .420 (10.7)  | .343 (8.7)  | .281 (7.1)  | .281 (7.1)  | .144 (3.7)      | .203 (5.2)  | .128 (3.3)      | .032 (.81)  | Brass    | Tin    |
| <b>4335</b> | .562 (14.3)  | .562 (14.3) | .500 (12.7) | .412 (10.5) | .120 (3.0)      | .411 (10.4) | .120 (3.0)      | .062 (1.57) | Steel    | Nickel |
| <b>4336</b> | .562 (14.3)  | .562 (14.3) | .500 (12.7) | .412 (10.5) | .144 (3.7)      | .412 (10.5) | .144 (3.7)      | .062 (1.57) | Steel    | Nickel |
| <b>618</b>  | .628 (16.0)  | .628 (16.0) | .375 (9.5)  | .378 (9.6)  | .169 (4.3)      | .378 (9.6)  | .169 (4.3)      | .050 (1.27) | Brass    | Tin    |
| <b>619</b>  | .687 (17.4)  | .687 (17.4) | .375 (9.5)  | .500 (12.7) | .144 (3.7)      | .500 (12.7) | .144 (3.7)      | .032 (.81)  | Steel    | Tin    |
| <b>4326</b> | 1.013 (25.7) | .487 (12.4) | .312 (7.9)  | .816 (20.7) | .140 (3.6)      | .332 (8.4)  | .140 (3.6)      | .050 (1.27) | Steel    | Nickel |
| <b>620</b>  | 1.156 (29.4) | .656 (16.7) | .375 (9.5)  | .906 (23.0) | .169 (4.3)      | .420 (10.7) | .169 (4.3)      | .032 (.81)  | Steel    | Tin    |

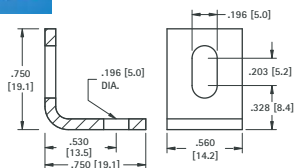
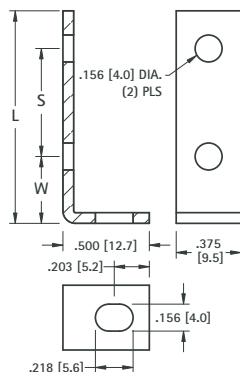
# BOARD BRACKETS



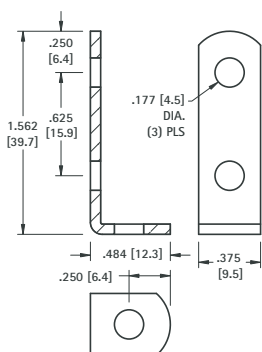
Originally designed for our line of standardized terminal boards; these brackets can also be used in other applications. See pages 148-149 for Turret Terminal Boards.

**MATERIALS:** .062 (1.57) Steel, Nickel Plate

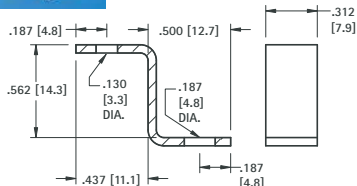
| CAT. NO.    | W          | L            | S            |
|-------------|------------|--------------|--------------|
| <b>1570</b> | .281 (7.1) | 1.187 (30.1) | .750 (19.1)  |
| <b>1556</b> | .375 (9.5) | 1.625 (41.3) | 1.000 (25.4) |
| <b>1571</b> | .281 (7.1) | 1.625 (41.3) | 1.187 (30.1) |
| <b>1567</b> | .375 (9.5) | 2.125 (54.0) | 1.500 (38.1) |
| <b>1568</b> | .375 (9.5) | 2.625 (66.7) | 2.000 (50.8) |
| <b>1569</b> | .375 (9.5) | 3.125 (79.4) | 2.500 (63.5) |



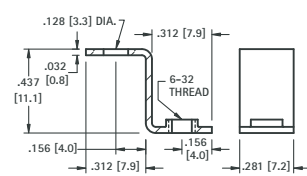
**CAT. NO. 4337** **MATERIAL:** .080 (2.03) Aluminum



**CAT. NO. 1564** **MATERIAL:** .062 (1.57) Steel, Nickel Plate



**CAT. NO. 4325** **MATERIAL:** .050 (1.27) Steel, Nickel Plate



**CAT. NO. 630** **MATERIAL:** .032 (.81) Brass, Tin Plate