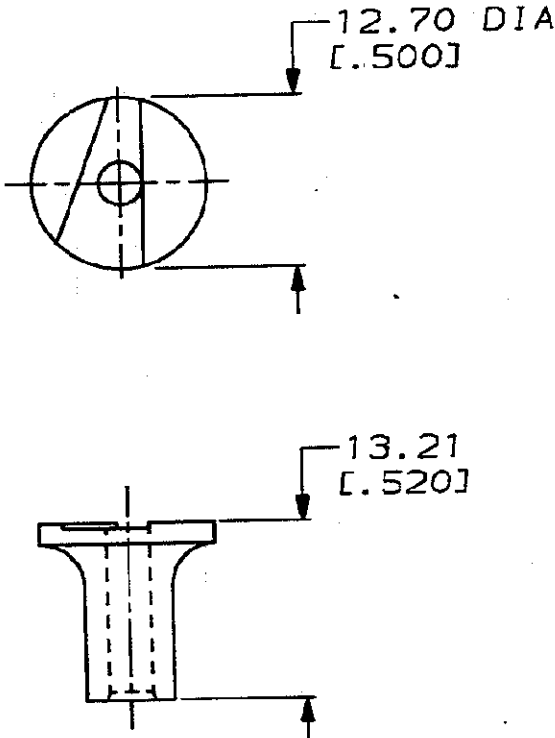


DRAWING MADE IN THIRD ANGLE PROJECTION

LOC	DIST	REVISIONS					
CE	16	P	F	LTR	DESCRIPTION	DATE	APPROVED
		✓			B REDRAW AND REV PER CE-1199	1-12-88	CE/PLM 1-15-88



1. DIMENSIONS IN [ ] ARE IN INCHES

METRIC

228837-1  
PART NUMBER

THIS DRAWING IS UNPUBLISHED. RELEASED FOR PUBLICATION BY AMP INCORPORATED. ALL INTERNATIONAL RIGHTS RESERVED. © COPYRIGHT 19

DO NOT SCALE PRINT.  
UNLESS SPECIFIED  
DIMENSIONS IN MM  
TOLERANCES ON:  
UN PLC DEC ± .25 (.0102)  
UN PLC DEC ± \_\_\_\_\_  
ANGLES ± \_\_\_\_\_

DR *C. Coughlin* 1-12-88  
CHK *[Signature]* 1-14-88  
APPR *Robert J. Mangione* 1-15-88  
APPR *[Signature]* 1-15-88

**AMP**

AMP INCORPORATED  
Harrisburg, Pa. 17105

MATERIAL  
STAINLESS  
STEEL

PRODUCT SPEC \_\_\_\_\_

NAME  
CUTTING FIXTURE,  
DNP, OPTIMATE

FINISH \_\_\_\_\_

APPLICATION SPEC \_\_\_\_\_

SIZE **A** FSCM NO 00779 DRAWING NO 228837

WEIGHT \_\_\_\_\_

SCALE NTS SHEET 1 OF 1