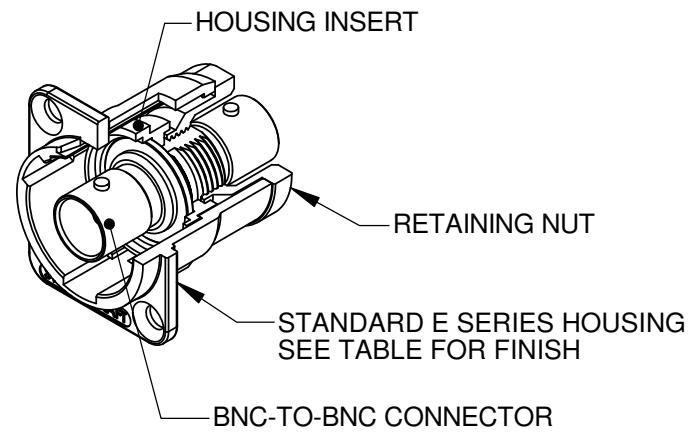
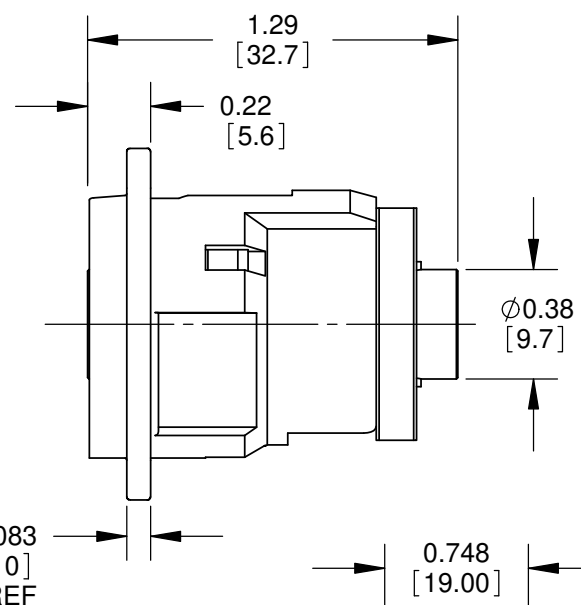
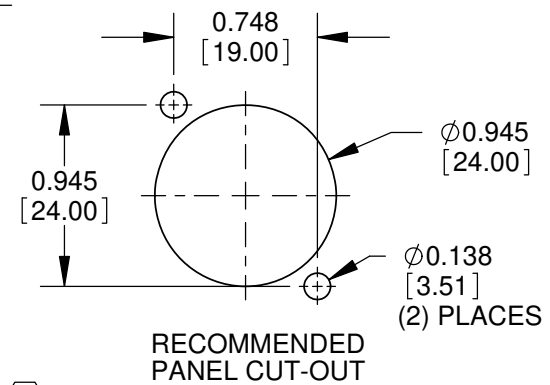


SEE NOTE 2



✓  $\varnothing 0.138$  [3.51] THRU  
 $\varnothing 0.230$  [5.84] x 82°  
 (2) PLACES REF



RECOMMENDED PANEL CUT-OUT

NOTES:

- MATERIALS:  
 HOUSING - ZINC ALLOY  
 HOUSING INSERT - THERMOPLASTIC, BLACK  
 RETAINING NUT - THERMOPLASTIC, BLACK  
 BNC TO BNC CONNECTOR - BRASS, NICKEL PLATED

Ⓢ 2. ORIENTATION OF BAYONET POSTS  $\pm 20^\circ$  FROM VERTICAL. Ⓣ

3. THESE PRODUCTS ARE RoHS COMPLIANT.

| PART NUMBER | HOUSING FINISH |
|-------------|----------------|
| EBNC2R      | NICKEL PLATED  |
| EBNC2RB     | BLACK CHROME   |

**CUSTOMER DRAWING**

| REV | ECO NUMBER | DATE     | BY | APVD |
|-----|------------|----------|----|------|
| D   | 28183      | 6-18-19  | PC | TJK  |
| C   | 27546      | 7-24-15  | TO | TJK  |
| B   | 27482      | 04/20/15 | PC | TJK  |
| A   | 25317      | 3/22/06  | RS | TJK  |

UNLESS OTHERWISE SPECIFIED

1. ALL DIMENSIONS IN INCHES [mm]  
 - TWO PLACE DECIMALS  $\pm 0.02$  [0.5]  
 - THREE PLACE DECIMALS  $\pm 0.005$  [0.13]

**DO NOT SCALE DRAWING**

THIS DRAWING DESCRIBES A DESIGN CONSIDERED PROPRIETARY IN NATURE, DEVELOPED AND MANUFACTURED BY SWITCHCRAFT INC. AND IS RELEASED ON A CONFIDENTIAL BASIS FOR IDENTIFICATION PURPOSES ONLY.

|  |       |             |               |        |
|--|-------|-------------|---------------|--------|
| SIZE   | WIDTH | MULT        | LBS/M         | TEMPER |
| FINISH   |       |             | MATERIAL      |        |
| SPEC No.   |       |             | SPEC No.      |        |
| FIRST USED ON  |       | SCALE 1.5:1 |               |        |
| DATE DRAWN   | BY    | CHKD        | APVD          |        |
| 3/16/06  | MA    | MA          | MA            |        |
|  |       | 3/16/06     | 3/16/06       |        |
| NAME   |       |             | PART No.      | REV    |
| E SERIES CONNECTOR<br>RECESSED BNC FEEDTHROUGH, RoHS |       |             | EBNC2R SERIES | D      |

SHEET 1 OF 1