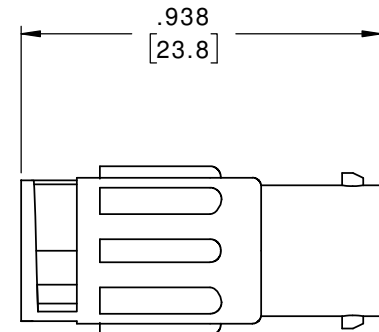
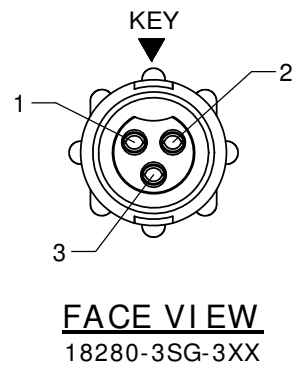
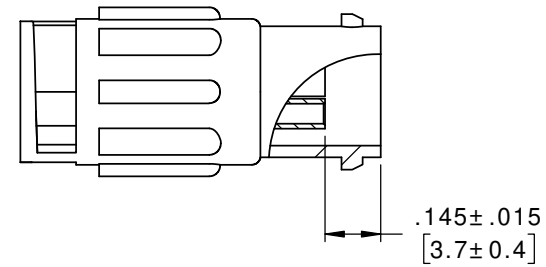
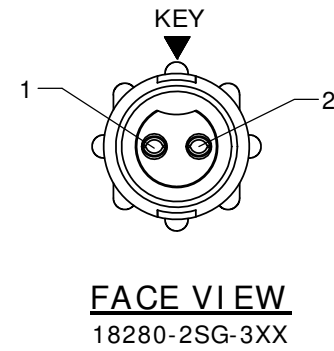
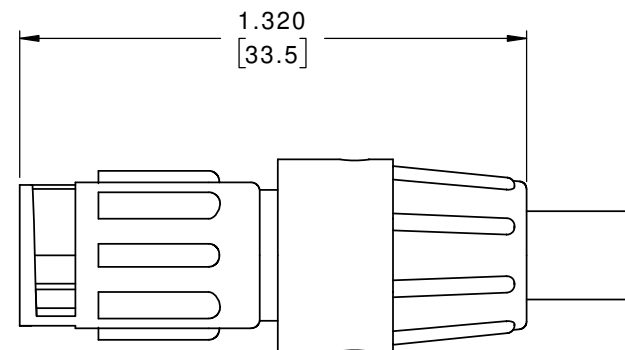
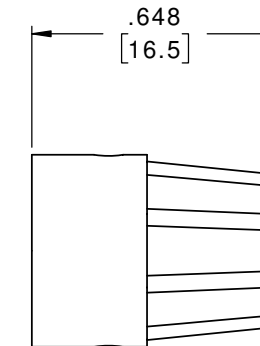
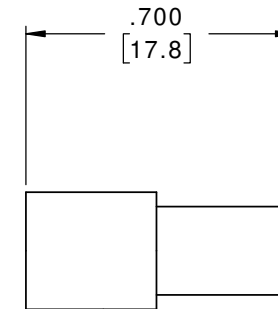
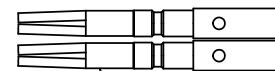


ASS'Y P/N	NO. OF CONTACTS	GROMMET FOR CABLE O.D.
18280-2SG-311	2	.09-.14 [2.3-3.5mm]
18280-2SG-315		.15-.17 [3.8-4.3mm]
18280-2SG-318		.18-.20 [4.6-5.1mm]
18280-3SG-311	3	.09-.14 [2.3-3.5mm]
18280-3SG-315		.15-.17 [3.8-4.3mm]
18280-3SG-318		.18-.20 [4.6-5.1mm]

NOTES:  
 1. ALL PARTS TO BE BULK PACKED  
 2. ALL DIMENSIONS ARE REFERENCE EXCEPT THOSE WITH A TOLERANCE



IN-LINE CONNECTOR, MALE  
 MAT'L: NYLON, BLACK  
 NO. OF CONTACTS: SEE CHART



**KIT SHOWN ASSEMBLED**  
 FOR CUSTOMER REFERENCE ONLY


DIMENSIONS IN BRACKETS [ ] ARE METRIC

**CUSTOMER APPROVAL**

THIS DOCUMENT CONTAINS CONFIDENTIAL INFORMATION PROPRIETARY TO CONXALL CORPORATION. ANY REPRODUCTION, DISCLOSURE, OR USE OF THIS DOCUMENT / INFORMATION IS EXPRESSLY PROHIBITED UNLESS AUTHORIZED IN WRITING BY CONXALL CORPORATION.

APPROVED BY: \_\_\_\_\_  
 DATE: \_\_\_\_\_

**RoHS COMPLIANT**

A	MA	06-02-20	DRAWING CREATED PER DOR 20-E149SL-15	
REV.	INIT.	DATE	DESCRIPTION	
	MA	06-02-20	ALL INFORMATION ILLUSTRATED IS THE PROPERTY OF CONXALL CORPORATION. UNAUTHORIZED DUPLICATION OR DISTRIBUTION OF THIS DOCUMENT IS PROHIBITED.  601 E. WILDWOOD VILLA PARK, IL 60181	
APPROVED BY:			TITLE:	
ALL UNITS ARE IN FEET, INCHES, FRACTION OF INCHES AND DECIMALS. - CRITICAL CHARACTERISTIC FLAG PER SPEC. XXXX			IN-LINE CONNECTOR KIT (2-3) #20 SOCKET CONTACTS MINI-CON-X STANDARD PRODUCT	
SCALE	SIZE	SHEET	CUSTOMER:	
NTS	B	1 OF 1	PART NUMBER: 18280-XSG-3XX	
FILE:	DIRECTORY:	REV		
18280-XSG-3XX	SLW	A		

CUSTOMER PRINT

PART NUMBER: 18280-XSG-3XX