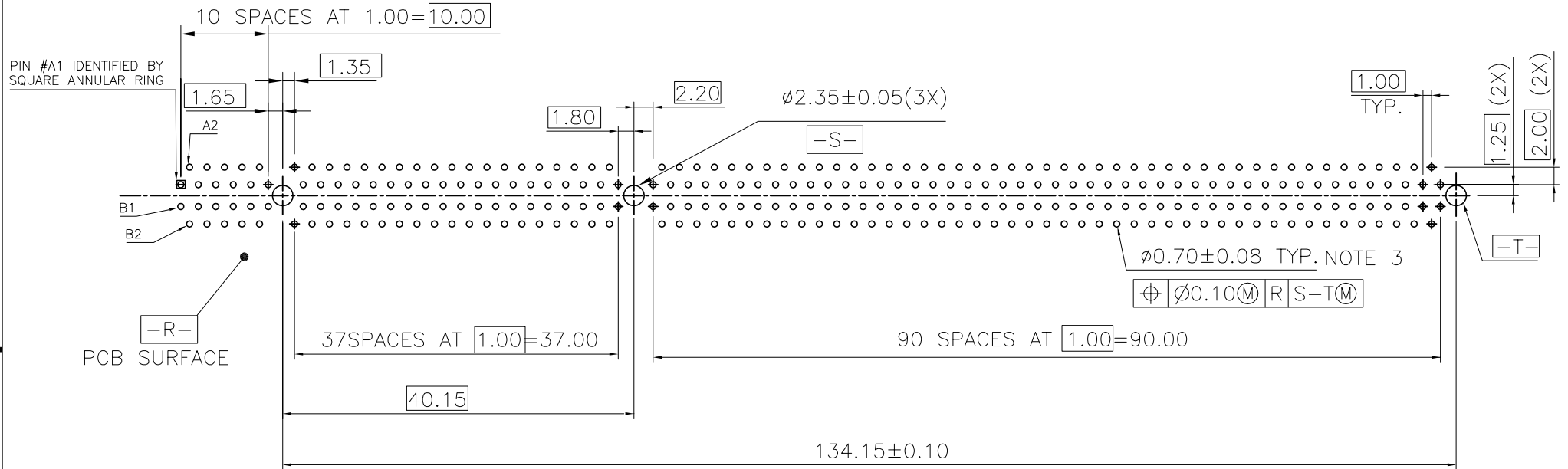


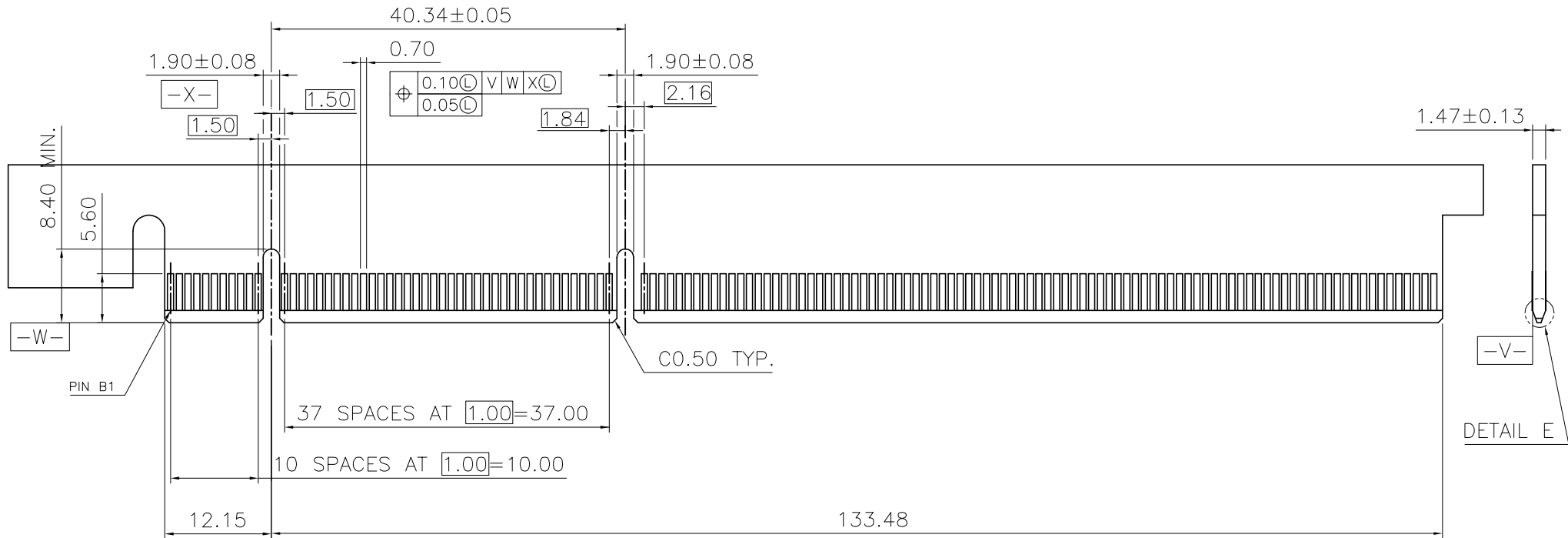
WITHOUT LATCHING TYPE

mat'l. code		-		surface		- ✓ tolerance		projection		product family	
						ASME_Y14.5		MM		PCI_EXPRESS	
lfr		ecn no		dr		date		tolerances unless otherwise specified		title	
A		T04-0383		MW		10/06/04		angles		PCI_EXPRESS_SUPER_SLOT_GEN3	
B		T05-0012		MW		01/13/05		Linear		CARD_EDGE_TH_280P_ASS'Y	
C		T05-0210		MW		09/15/05		±2'		scale N/A	
D		06-21161		ST		05/27/15		dr		dwg no	
E		06-30520		ZH		06/21/18		engr		sheet 1 of 4	
								chr		size	
								appd		A4	
sheet		revision		E				Amphenol FCI		10037901	
index		sheet						type		CUSTOMER Drawing	

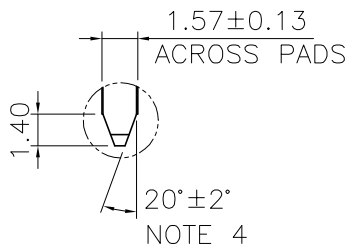


MOTHER BOARD FOOTPRINT PATTERN
CONNECTOR SIDE SHOWN

mat'l. code		-		surface		- ✓		tolerance		ASME_Y14.5		projection		product family		PCI_EXPRESS	
lfr		ecn no		dr		date		tolerances unless otherwise specified		MM		title		PCI_EXPRESS_SUPER_SLOT_GEN3		5	
								angles		.0±.0.30		scale N/A		CARD_EDGE_TH_280P_ASS'Y			
								±2'		.000±.0.10		Amphenol FCI		dwg no		sheet 2 of 4 size	
				dr		STONE_LI		2015-05-27				10037901		A4			
				enfr		STONE_LI		2015-05-27				type		CUSTOMER Drawing			
				chr		/		2015-05-27									
				appd		PM_ZHENG		2015-05-27									
sheet index		revision sheet		E													



DAUGHTER CARD
PRIMARY (COMPONENT) SIDE



SCALE 2:1
DETAIL E

mat'l. code		-		surface		- ✓		tolerance		ASME_Y14.5		projection		product family		PCI_EXPRESS	
lfr		ecn no		dr		date		tolerances unless otherwise specified		MM		scale N/A		title		PCI_EXPRESS_SUPER_SLOT_GEN3	
								angles		.0±0.30				CARD_EDGE_TH_280P_ASS'Y		5	
								±2'		.00±0.20				dwg no		sheet 3 of 4 size	
								dr		STONE_LI		2015-05-27		10037901		A4	
								engr		STONE_LI		2015-05-27		Amphenol FCI			
								chr		/		2015-05-27		type		CUSTOMER Drawing	
								appd		PM_ZHENG		2015-05-27					
sheet index		revision sheet		E													

NOTES:

1.MATERIAL:

HOUSING: HIGH TEMPERATURE NYLON, GLASS FILLED UL94V-0 RATED. SUITABLE FOR IR REFLOW.

TERMINAL: COPPER ALLOY

PLATING: 50u" NICKEL UNDERPLATE ALL OVER
CONTACT AREA PLATING - SEE PRODUCT NUMBER CODE
SOLDER TAIL: TIN OR TIN/LEAD (90/10) - SEE PRODUCT NUMBER CODE 100u" MIN. OVER 50u" NICKEL

METAL BOARD LOCKS: COPPER ALLOY
FINISH: 100u" TIN OR TIN/LEAD (90/10) OVER 50u" NICKEL UNDERPLATE SEE PRODUCT NUMBER CODE

2.PRODUCT SPECIFICATION: GS-12-233

③THE HORIZONTAL AXIS FOR THE HOLE PATTERN IS ESTABLISHED BY A LINE THROUGH THE CENTER OF THE TWO Ø2.35 HOLES. THE VERTICAL AXIS IS 90° TO THE HORIZONTAL AXIS, THROUGH THE CENTER OF DATUM Z.

④CHAMFER EDGES MUST BE FREE OF CUTTING BURRS.

5.RoHS COMPATIBLE PRODUCT SPECIFICATIONS

- a - PLATING:
 - "LF" MEANS THE PRODUCT IS LEAD-FREE, 2um MINIMUM MATTE TIN OVER 1.27um MINIMUM NICKEL UNDERPLATE.
- b - MANUFACTURING PROCESS COMPATIBILITY
 - THE HOUSING WILL WITHSTAND EXPOSURE TO 260°C±5°C SOLDER BATH TEMPERATURE FOR 5 SECONDS IN A REFLOW SOLDER APPLICATION WITH A 1.6mm MIN THICK CIRCUIT BOARD.

PRODUCT NUMBER CODE

10037901 -x x x x x □ □

HOUSING COLOR OPTIONS

1-BLACK

PEGS OPTIONS

1-METAL BOARD LOCKS

TERMINAL PLATING OPTIONS

- 0-50u" Ni UNDERPLATE
30u" Au CONTACT AREA
100u" TIN TAIL AREA ----- COMPATIBLE RoHS
- 1-50u" Ni UNDERPLATE
15u" Au CONTACT AREA
100u" TIN TAIL AREA ----- COMPATIBLE RoHS
- 2-50u" Ni UNDERPLATE
GOLD FLASH CONTACT AREA
100u" TIN TAIL AREA ----- COMPATIBLE RoHS
- 3-50u" Ni UNDERPLATE
30u" Au CONTACT AREA
100u" TIN/LEAD TAIL AREA ----- INCOMPLIANT RoHS
- 4-50u" Ni UNDERPLATE
15u" Au CONTACT AREA
100u" TIN/LEAD TAIL AREA ----- INCOMPLIANT RoHS
- 5-50u" Ni UNDERPLATE
GOLD FLASH CONTACT AREA
100u" TIN/LEAD TAIL AREA ----- INCOMPLIANT RoHS

LEAD FREE OPTION

LEAVE BLANK FOR TERMINAL PLATING 3,4,5
"LF" FOR TERMINAL PLATING OPTION 0,1,2

PACKAGING OPTIONS
T-TRAY PACKAGING

TAIL LENGTH OPTIONS

LATCHING OPTIONS
0-WITHOUT LATCHING

	DIM "D"	PCB THICKNESS	BOARD LOCKS DIM "G"
0	2.30 ± 0.25 -0.13	1.56±0.10	1.70±0.15
1	3.10 ± 0.25 -0.13	2.36±0.10	2.50±0.15
2	2.54±0.25	1.56±0.10	1.70±0.15

mat'l. code		surface		tolerance		projection		product family	
-		-		ASME_Y14.5				PCI_EXPRESS	
lfr	ecn no	dr	date	tolerances unless otherwise specified				title	
				angles	lineal	MM		PCI_EXPRESS_SUPER_SLOT_GEN3	
				±2'	.02±0.30	scale N/A		CARD_EDGE_TH_280P_ASS'Y	
				dr	STONE_LI	2015-05-27			dwg no
				enfr	STONE_LI	2015-05-27			sheet 4 of 4
				chr	/	2015-05-27			size
				appd	PM_ZHENG	2015-05-27			A4
sheet index		revision	E					type	
		sheet						CUSTOMER Drawing	