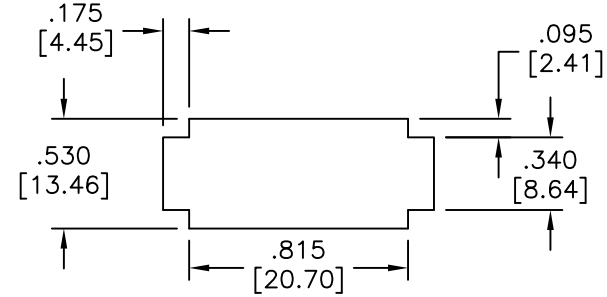
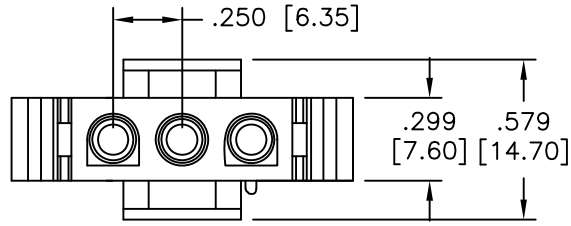
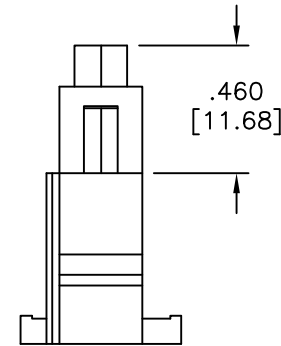
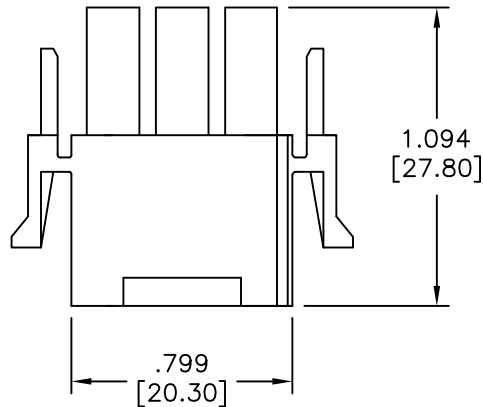


APPROVED: _____
 DATE: _____ TITLE: _____

Rev	AWO #	Description	Date	Appr
-		RELEASED	11/19/10	
A		REDRAWN	08/30/12	
B		UPDATE SPEC.	6/10/19	LH/KC



Panel hole dimensions



SPECIFICATIONS:

Material:
 Insulator: Nylon66. rated UL94V-2
 Insulator color: Natural

Electrical:

Current rating: 13A Δ
 Voltage rating: 600V
 Insulation resistance: 1000 Mohms min
 Dielectric withstanding voltage: 5000 VAC for 1 minut
 Temperature range: -55°C to +105°C

Environmental:

Lead free, RoHS compliant.



UNLESS OTHERWISE SPECIFIED ALL DIMENSIONS ARE INCHES [MM] TOLERANCES: EXCEPT AS NOTED INCHES HOLES .X ± .10 Ø.X ± .10 .XX ± .020 Ø.XX ± .015 .XXX ± .015 Ø.XXX ± .010		ADAM TECH INTERCONNECTS		909 Rahway Avenue, Union, NJ 07083 Phone: 908-687-5000 Fax: 908-687-5710	
APPROVALS		DATE		TITLE	
DRAWN	DY	11/19/10		6.35MM PITCH CONNECTOR, SINGLE ROW HOUSING, MALE, 3 POSITION	
CHECKED		SIZE	PART NO.	REV.	
APPROVED		X	DME-M-03	B	
REF: S00123T		SCALE: NTS	SHEET 1 OF 1		