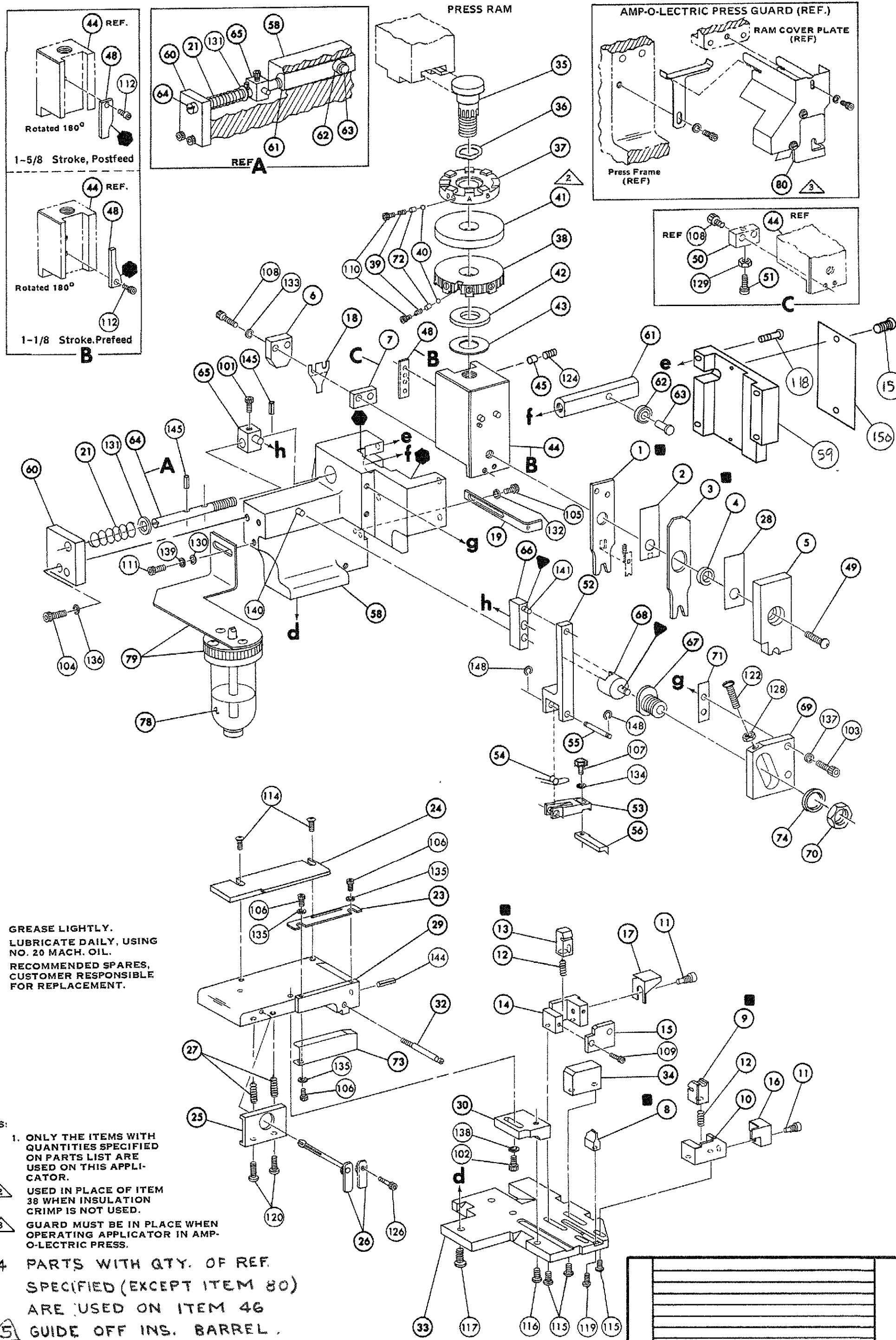


THIS IS A CONTROLLED DOCUMENT.



REQ.	PART NO.	DESCRIPTION	NO.	REQ.	PART NO.	DESCRIPTION	NO.
			162	REF	690517-1	SPACER	71
			161	REF	22594-8	NUT, HEX	70
			160	REF	240628-1	PLATE, ADJUSTMENT	69
			159	REF	240626-1	SHAFT, PIVOT	68
			158	REF	240633-1	BUSHING	67
			157	REF	455680-1	LEVER, INTERMEDIATE	66
			156	REF	240629-1	BLOCK, PIVOT	65
			155	REF	240632-2	SCREW, ADJUSTMENT, FEED ROD	64
			154	REF	240659-3	PIN, CAM ROLLER	63
			153	REF	240658-1	ROLLER, CAM	62
			152	REF	454398-2	ROD, FEED	61
			151	REF	454178-1	GUIDE, FEED ROD	60
			150	REF	454220-1	CAP, HOUSING	59
			149	REF	454485-1	HOUSING	58
REF	21045-3	RING, RETNG "C" (.187 DIA) FEED FINGER PIN	148				57
			147	1	690542-2	PAWL, FEED	56
			146	REF	240624-1	PIN, FEED FINGER	55
REF	5- 21028-1	PIN, SLTD SPRNG (.125 DIA x .50) ADJ ROD	145	REF	691499-1	SPRING, FEED FINGER	54
1	4- 21028-0	PIN, SLTD SPRNG (.093 DIA x .75) S. G. PL	144	REF	690541-1	FINGER, FEED	53
			143	REF	455679-1	LEVER, TERMINAL FEED ARM	52
			142	1	811242-1	BUMPER, HOLDDOWN	51
REF	1- 21030-1	PIN, DOWEL (.187 DIA x .50) LEVER	141	1	690753-1	SPACER, TONKER MOUNT	50
REF	1- 21030-6	PIN, DOWEL (.187 DIA x 1.25) HOUSING	140	1	7-21002-9	BOLT, CRIMPER	49
			139	1	690602-5	CAM PREFEED STROKE 1 1/8	48
			138				47
REF	21024-5	WASHER, LOCK (NO. 10) STRIP GUIDE ADJ BLK	137	1	459456-1	APPL. BASIC SUB-ASSY	46
REF	21024-5	WASHER, LOCK (NO. 10) ADJ PLATE	136	1	690191-1	PLUG, NYLON	45
			135	1	455673-1	RAM	44
3	21057-2	WASHER, LOCK (NO. 4) FRONT STRIP GUIDE	134	1	690125-1	WASHER, LAMINATED	43
1	21024-4	WASHER, LOCK (NO. 8) FEED FINGER	133	1	690124-1	WASHER, RAM	42
2	21024-4	WASHER, LOCK (NO. 8) DEPRESSOR	132				41
1	21024-4	WASHER, LOCK (NO. 8) STRIPPER	131	2	23241-6	BALL, STEEL	40
REF	21899-4	WASHER, FLAT (5/16 DIA) SCREW ADJ	130	2	690170-1	SPRING, COMPRESSION	39
			129	1	690142-1	DISC, INSULATION	38
1	21068-5	NUT, HEX MACH (6-32) HOLDDOWN	128	1	7-690141-8	DISC, WIRE	37
REF	21068-5	NUT, HEX MACH (6-32) FEED ADJ	127	1	22480-5	WASHER, SPRING	36
1	22353-8	SCREW, SHLDR (.187 DIA x .250 LG) DRAG LEVER	126	1	690212-1	POST, RAM	35
			125	1	690786-1	SUPPORT, TERMINAL	34
1	21009-2	SCREW, SKT SET (1/4-20 x .25) (NYLON) RAM	124	REF	455675-1	PLATE, BASE	33
			123	1	690432-3	SCREW, ADJUSTMENT	32
REF	3- 21064-2	SCREW, RD HD MACH (6-32 x 1.50) FEED ADJ	122				31
			121	REF	455689-1	BLOCK, STRIP GUIDE ADJ	30
2	3-21002-0	SCREW, BTN HD SKT CAP (10-32 x .38) DRAG	120	1	458144-3	PLATE, STRIP GUIDE	29
1	22733-8	SCREW, BTN HD SKT CAP (8-32 x .38) ANVIL	119	1	455888-0	SPACER, F. SHEAR DEPRESSOR	28
REF	2- 21002-9	SCREW, BTN HD SKT CAP (10-32 x .75) CAP	118	2	1-22284-0	SPRING, DRAG	27
REF	1- 24073-9	SCREW, BTN HD SKT CAP (NYLON) 1/4-20 x .75 HSG	117	1	240793-1	LEVER, DRAG RELEASE	26
REF	2- 21002-7	SCREW, BTN HD SKT CAP (10-32 x .50) S.G. ADJ BLK	116	1	240792-1	DRAG, STOCK	25
4	2- 21002-2	SCREW, BTN HD SKT CAP (8-32 x .50) SHEAR	115	1	690504-8	GUIDE, STRIP REAR	24
2	2-21002-2	SCREW, BTN HD SKT CAP (8-32 x .50) R. S. G.	114	1	690438-1	GUIDE, STRIP FRONT	23
			113				22
1	2- 21003-0	SCREW, FLAT HD SKT CAP (6-32 x .50) CAM	112	REF	4- 22284-9	SPRING, FEED RETURN	21
3	21000-4	SCREW, SKT HD CAP (10-32 x .38) LUB ASSY	111				20
2	23030-1	SCREW, SKT HD CAP (6-32 x .25) (NYLON) C.P. DISC	110	1	690472-1	STRIPPER	19
			109				18
2	2-21000-7	SCREW, SKT HD CAP (8-32 x .50) DEPRESSOR	108				17
1	2-22603-0	SCREW, HEX. MACH. (8-32 x .31) FEED FINGER	107	1	691667-1	HOLDER, TERMINAL	16
3	1- 21000-3	SCREW, SKT HD CAP (4-40 x .25) F. STRIP GUIDE	106				15
1	2- 21000-7	SCREW, SKT HD CAP (8-32 x .50) STRIPPER	105				14
REF	3- 21000-7	SCREW, SKT HD CAP (10-32 x .75) FEED ROD G.	104				13
REF	3- 21000-6	SCREW, SKT HD CAP (10-32 x .62) FEED ADJ BLK	103	1	5- 22280-0	SHEAR, FLOAT REAR	12
1	3- 21000-4	SCREW, SKT HD CAP (10-32 x .38) S.G. ADJ BLK	102	1	690461-1	SPRING, SHEAR	11
REF	3- 21000-4	SCREW, SKT HD CAP (10-32 x .38) PIVOT BLOCK	101	1	690459-1	STOP, SHEAR	10
REF	455749-1	GUARD WINDOW	80	1	454276-1	HOLDER, SHEAR FRONT	9
1-465184-0	LUBRICATOR ASSY		79	1	5-6905123	SHEAR, FLOAT FRONT	8
			78				7
			77				6
			76	1	455889-9	ANVIL	5
			75	1	1-238011-0	SPACER, DEPRESSOR REAR	4
			74	1	456134-3	DEPRESSOR, SHEAR REAR	3
REF	458109-1	WASHER, FLAT, SPECIAL	73	1	455888-3	DEPRESSOR, SHEAR FRONT	2
1	454877-3	PLATE, STRIP GUIDE COVER	72	1	4-456406-7	SPACER, TUBULAR, INS CRIMPER	1
2	690603-1	SPRING, ASSIST	71	1		CRIMPER, INSULATION	0
						CRIMPER, WIRE	0

TERM APPL SPEC 114-2082

### CRIMPING DATA

PAD LETTER	CRIMP HEIGHT	WIRE SIZE	WIRE STRIP LENGTH	THIS APPLICATOR WILL APPLY
A	.061	16		
B	.053	18		
C	.049	20		
D	NOT USED			
CRIMP	SIZE	TYPE	FEED	USED ON MACH NO.
WIRE	.090	F	.535	565435-5
INSULATION	RANGE	WIRE RANGE	APPLICATOR INSTRUCTION	
.140	.060 - .110	20 - 16	A 8040	
REMARKS: AMP-O-LECTRIC PRE-FEED				

**AMP** APPLICATOR MINIATURE QUICK CHANGE  
 HD SIDE-FEED (187 SERIES PIGGY-BACK FASTON)  
 SET UP CASE 458637-1 LAYOUT NO. 674  
 DRAWN 9-20-73 APPROVED [Signature] 1-23  
 R. BENNETT  
 CHECKED [Signature] 7-3-73  
 M. [Signature]

687966-2

114-2082-1011-01  
 114-2082-0150-079-03  
 114-2082-0150-058-056  
 114-2082-0150-041-035  
 114-2082-0150-016-055  
 114-2082-0150-017-057  
 114-2082-0150-018-057  
 114-2082-0150-019-057

PRINT 66  
 2082-2