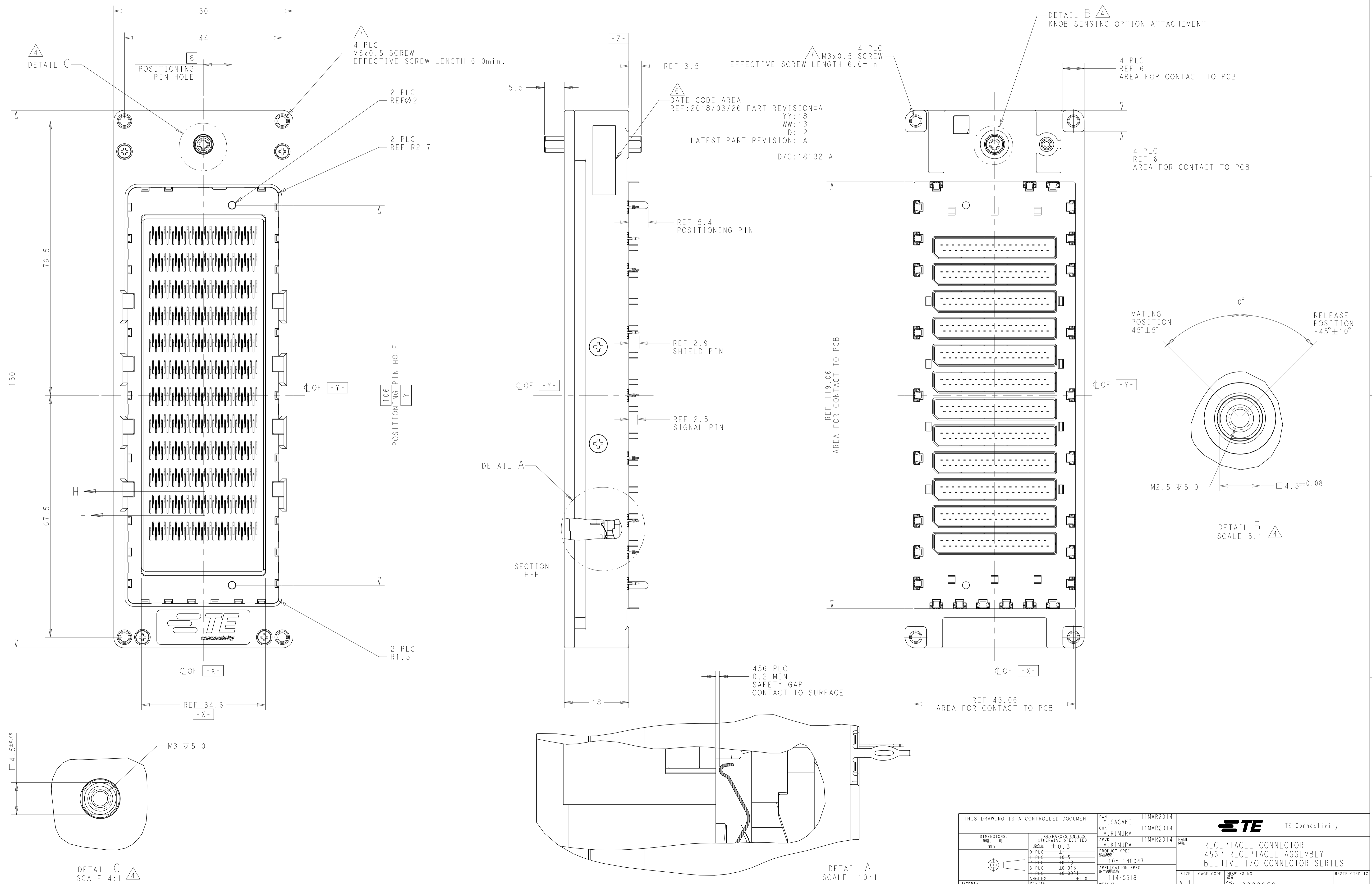


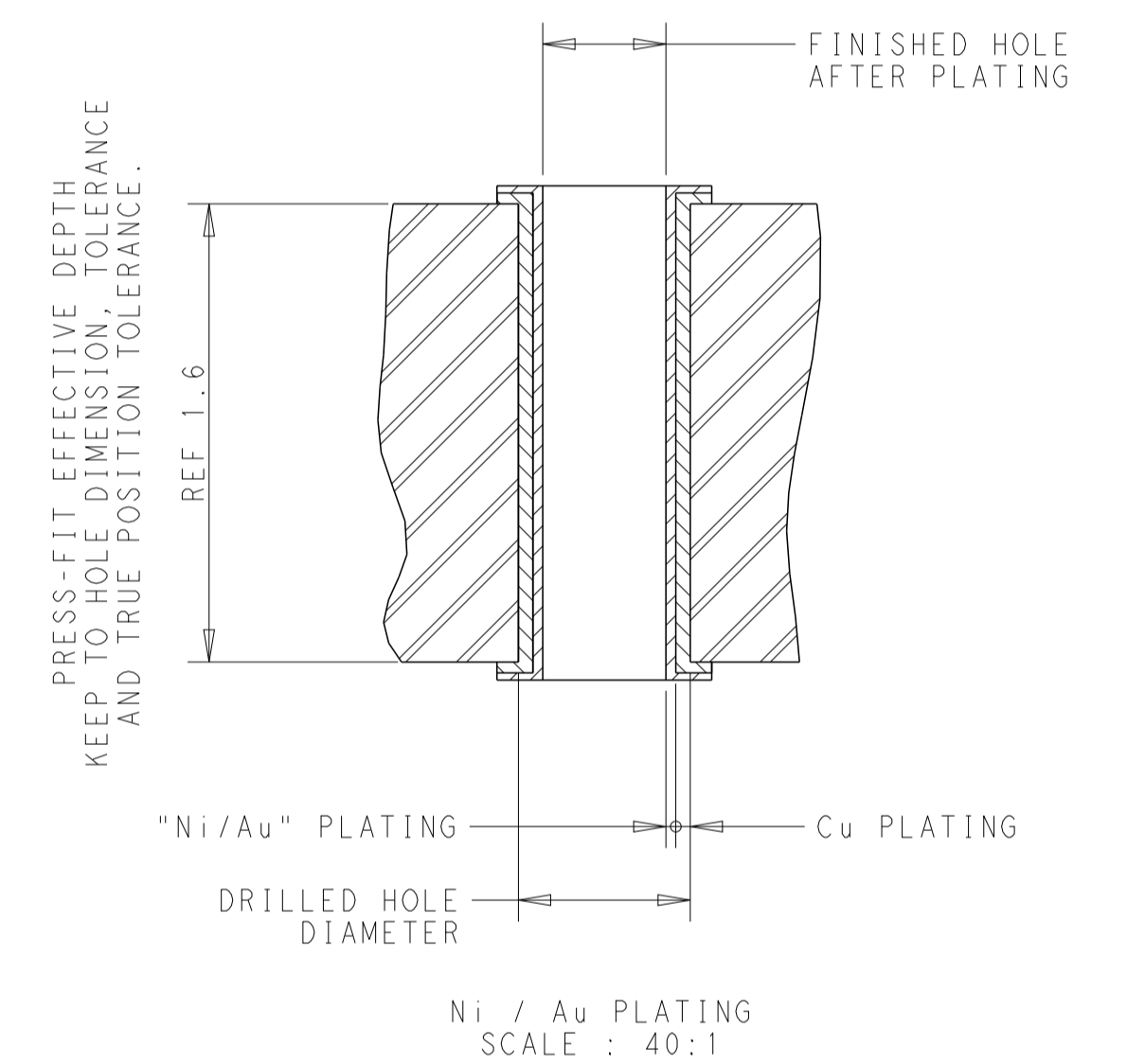
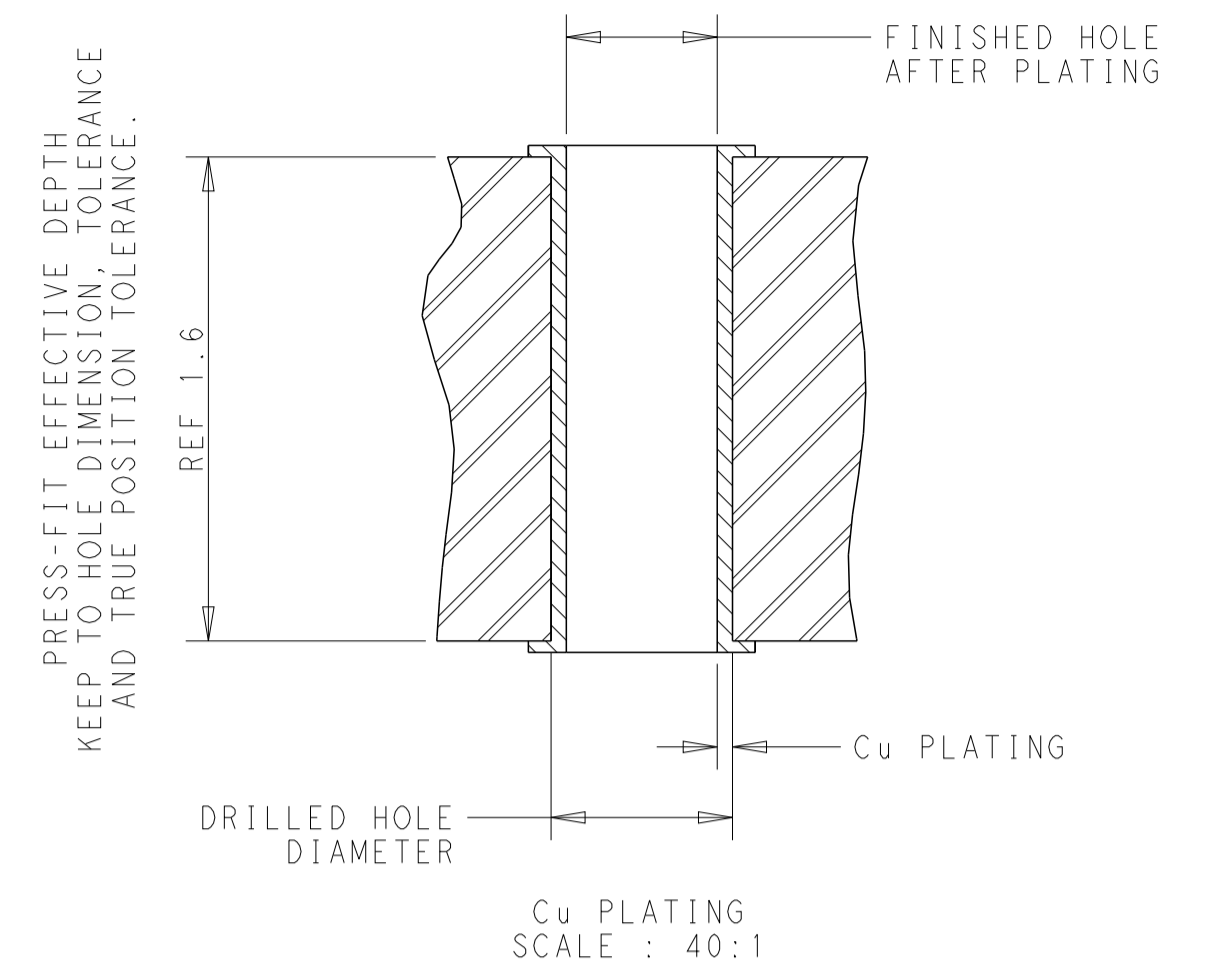
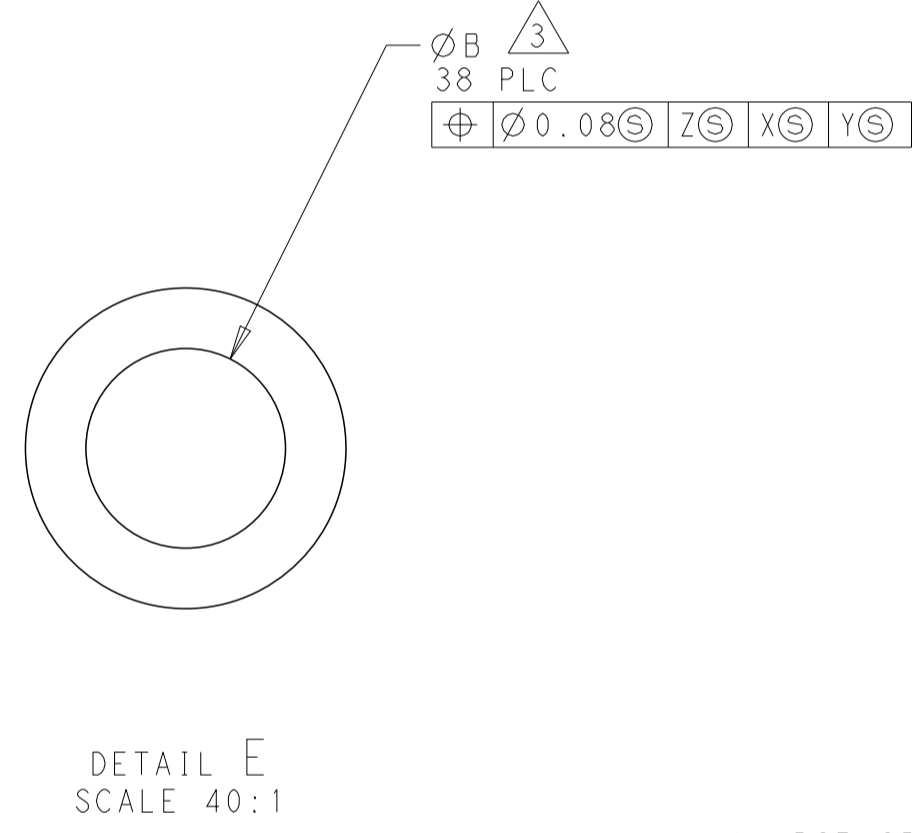
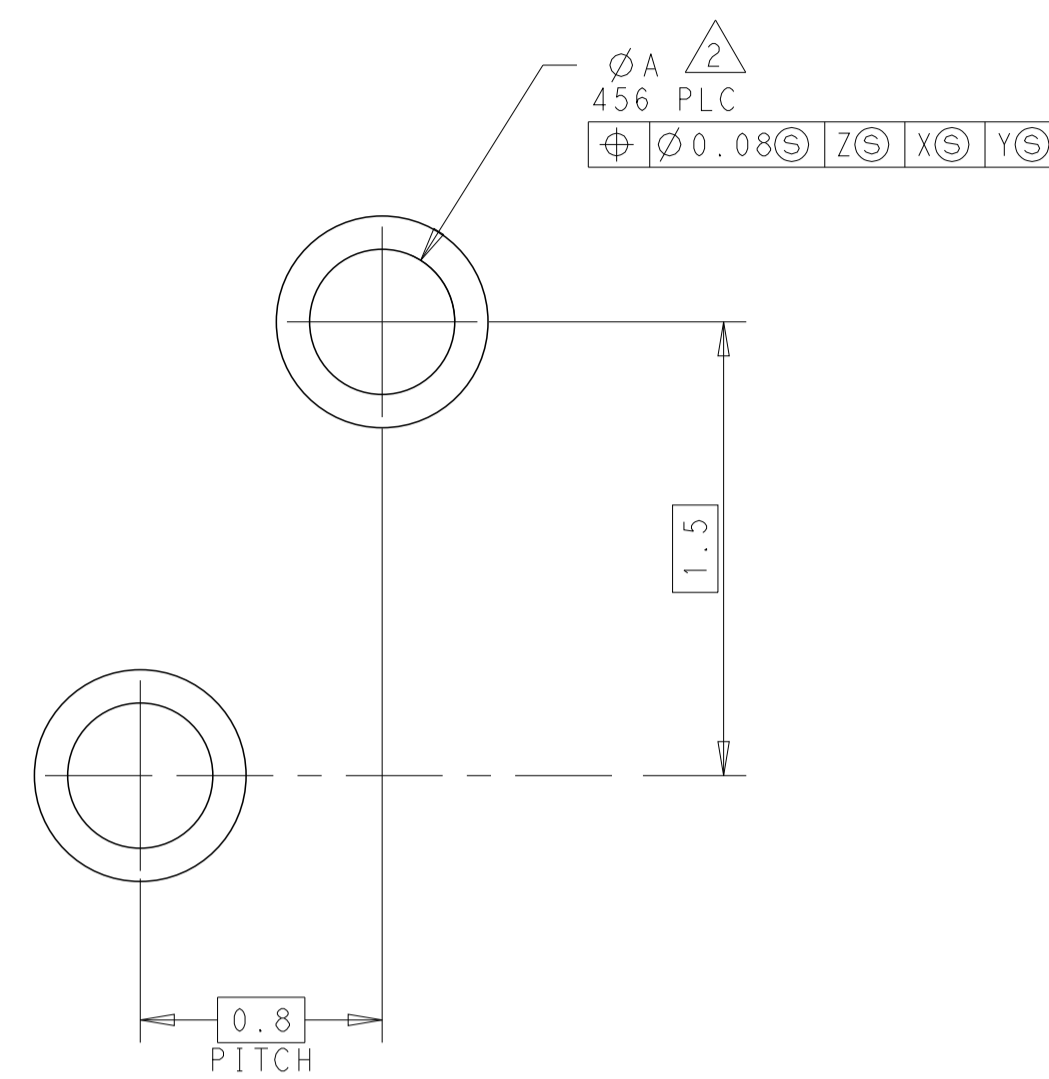
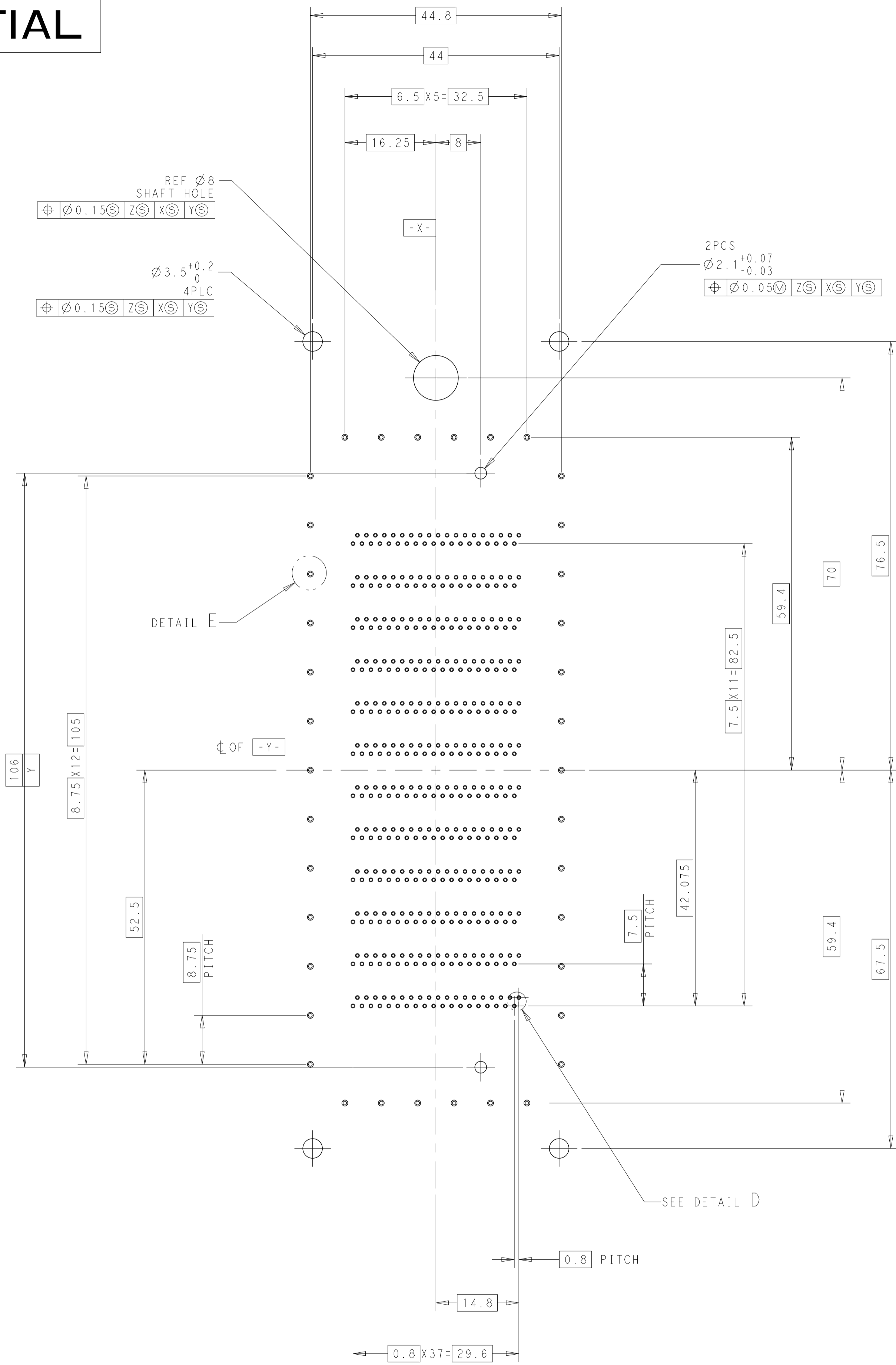
CONFIDENTIAL

REVISIONS				
REV	DESCRIPTION	DATE	OWN	APVD
E	REVISED	10SEP2015	Y.S	M.K
F	REVISED	06OCT2016	Y.S	M.K
G	REVISED FOR SHIELD FINGER CHANGED	23FEB2018	Y.S	M.K
H	REVISED ECO-18-006616	27APR2018	Y.S	M.K



THIS DRAWING IS A CONTROLLED DOCUMENT.		OWN: Y. SASAKI 11MAR2014		TE Connectivity	
DIMENSIONS: UNLESS OTHERWISE SPECIFIED: mm		CHK: M. KIMURA 11MAR2014		RECEPTACLE CONNECTOR 456P RECEPTACLE ASSEMBLY BEEHIVE I/O CONNECTOR SERIES	
TOLERANCES UNLESS OTHERWISE SPECIFIED:		APVD: M. KIMURA 11MAR2014	NAME: S/N	RESTRICTED TO	
0-PLC ±0.3 1-PLC ±0.5 2-PLC ±0.13 3-PLC ±0.013 4-PLC ±0.004		PRODUCT SPEC: 108-140047	SIZE: A1	CAGE CODE: -	DRAWING NO: C=2822650
MATERIAL: SEE SHEET 3 TABLE		APPLICATION SPEC: 114-5518	WEIGHT: 308 g	CUSTOMER DRAWING	
FINISH: SEE SHEET 3 TABLE		SCALE: 2:1 SHEET 1 OF 7 REV H			

CONFIDENTIAL



- PCB SPECIFICATION
MATERIAL : FR4(REF)
THICKNESS : 1.6mm MINIMUM
- PLATED THROUGH HOLE ØA
COPPER PLATING TYPE
COPPER FINISHED T,H DIA : REF Ø0.48 (Ø0.48±0.05)
DRILL HOLE DIA : Ø0.56±0.02
COPPER PLATING : 0.038±0.013

Au PLATING TYPE
Au FINISHED T,H DIA : REF Ø0.48 (Ø0.48±0.05)
DRILL HOLE DIA : Ø0.56±0.02
COPPER PLATING : 0.038±0.013
Ni PLATING : 0.00127 TO 0.0026mm
Au PLATING : 0.0001 TO 0.0005mm
- PLATED THROUGH HOLE ØB
COPPER PLATING TYPE
COPPER FINISHED T,H DIA : REF Ø0.66 (Ø0.66±0.05)
DRILL HOLE DIA : Ø0.74±0.025
COPPER PLATING : 0.038±0.013

Au PLATING TYPE
Au FINISHED T,H DIA : REF Ø0.66 (Ø0.66±0.05)
DRILL HOLE DIA : Ø0.74±0.025
COPPER PLATING : 0.038±0.013
Ni PLATING : 0.00127 TO 0.0026mm
Au PLATING : 0.0001 TO 0.0005mm

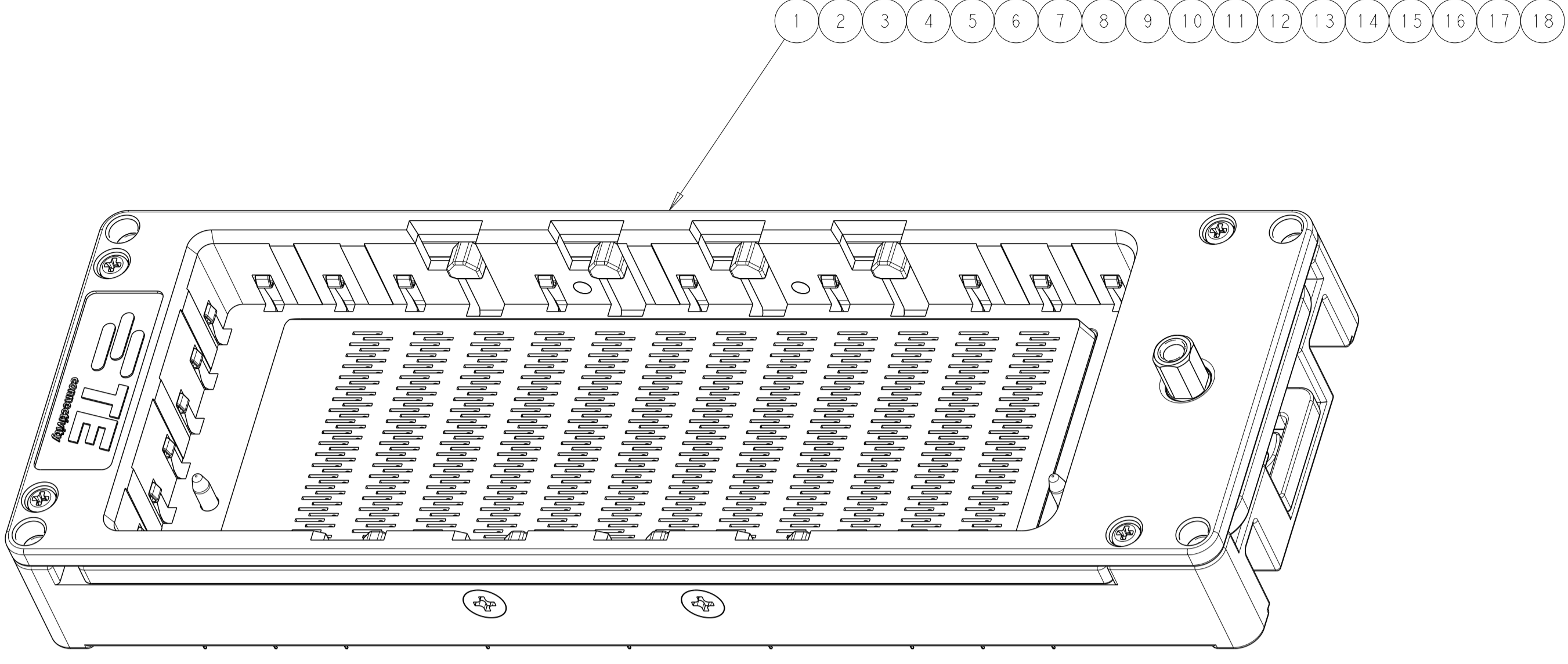
RECOMMENDED PCB LAYOUT
CONNECTOR TOP VIEW

REVISIONS				
REV	DATE	BY	CHK	APPV
1				
SEE SHEET 1				

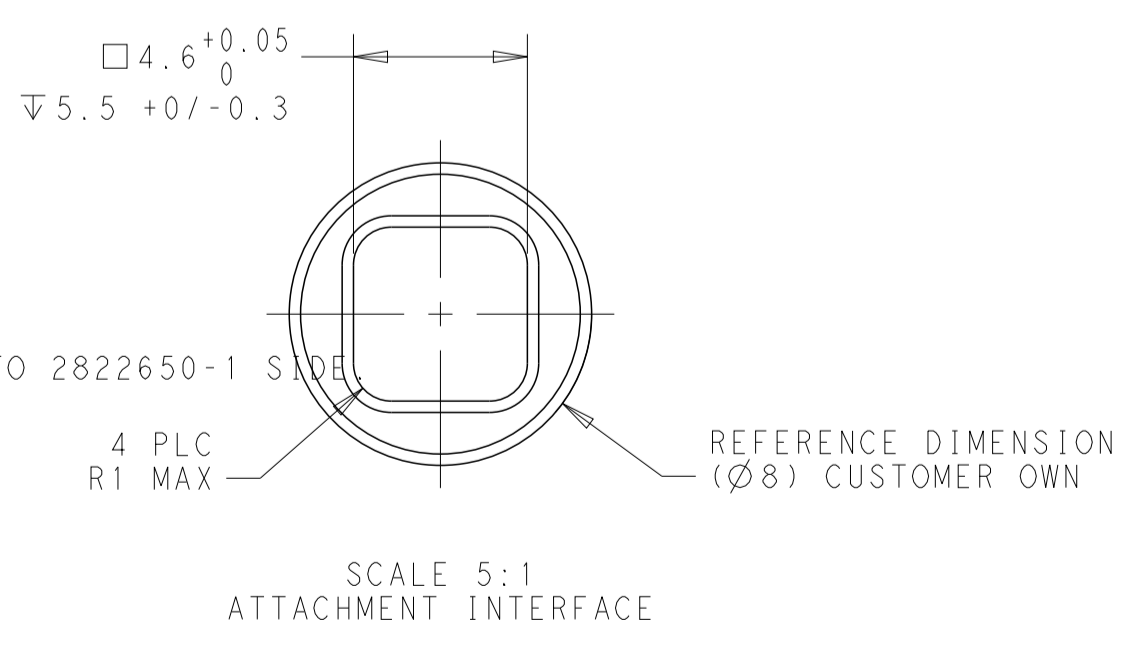
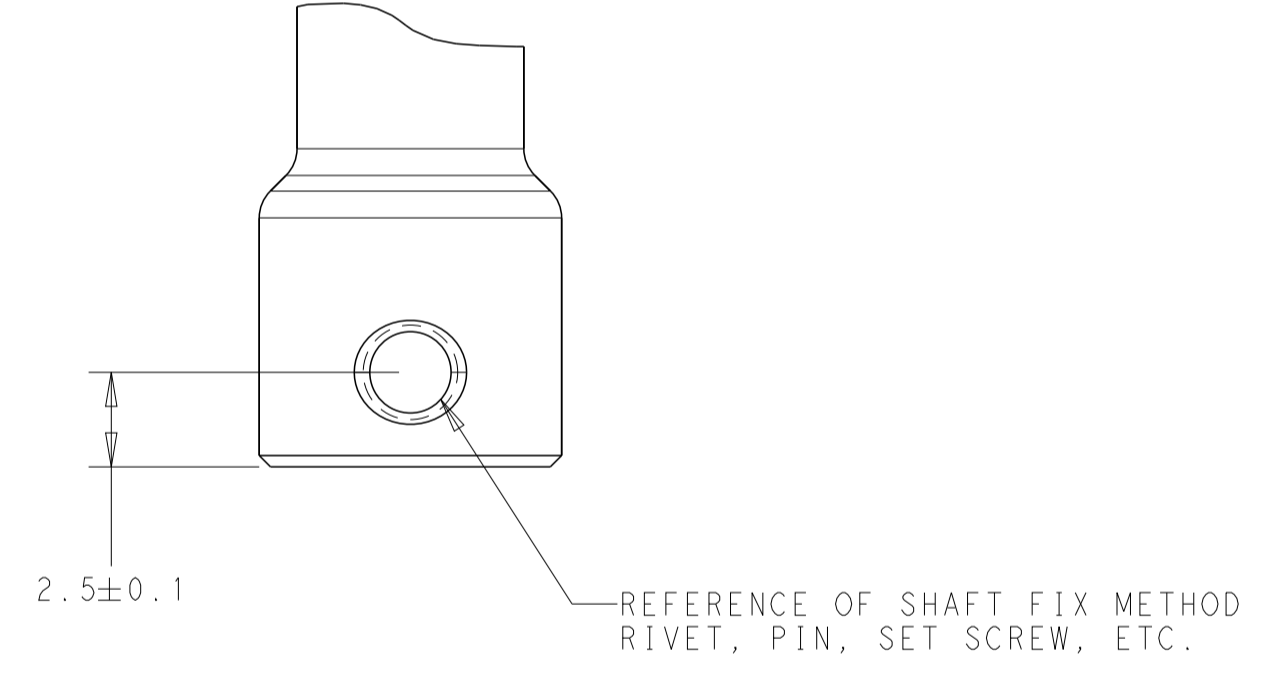
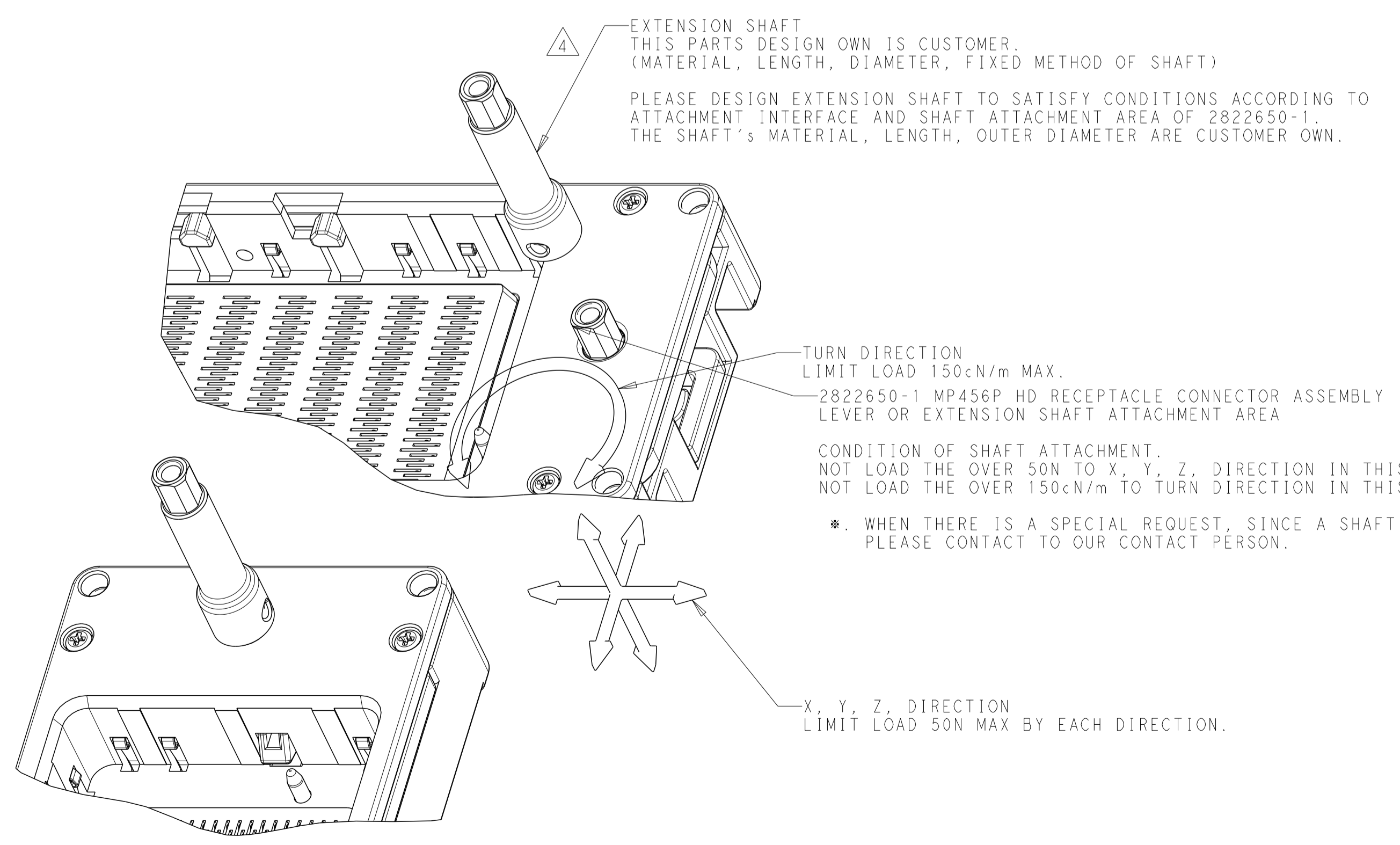
THIS DRAWING IS A CONTROLLED DOCUMENT.		OWN T. SASAKI 11MAR2014	CHK M. KIMURA 11MAR2014	TE Connectivity	
DIMENSIONS: mm	TOLERANCES UNLESS OTHERWISE SPECIFIED: mm	APVD M. KIMURA 11MAR2014	NAME S/N	RECEPTACLE CONNECTOR 456P RECEPTACLE ASSEMBLY BEEHIVE I/O CONNECTOR SERIES	
	0-PLC ±0.3 1-PLC ±0.5 2-PLC ±0.13 3-PLC ±0.013 4-PLC ±0.0041 ANGLES ±1.0	PRODUCT SPEC 108-140047	SIZE	CAGE CODE	DRAWING NO
MATERIAL SEE SHEET 3 TABLE	FINISH SEE SHEET 3 TABLE	APPLICATION SPEC 114-5518	A1	-	2822650
CUSTOMER DRAWING		WEIGHT 308 g	SCALE 2:1	SHEET 2	OF 7
		REV H			

CONFIDENTIAL

REVISIONS				
REV	DATE	BY	CHK	APPV
-	SEE SHEET 1	-	-	-



- 4. WHEN ROTATE A LEVER 90 ± 10 DEGREES, THERE NEEDS TO BE A FEELING OF A CLICK. WHEN MATING WITH PLUG ASSY LEVER OPERATING TORQUE : $70 \text{cN}\cdot\text{m}$ MAX.
- 5. DIELECTRIC WITHSTAND VOLTAGE : 500VAC ,CURRENT LEAKAGE 0.5mA,2sec DISCONTINUITY TEST, TEST CONDITION : VOLTAGE 5VDC, 2sec. LEVER ANGLE : 90 ± 10 (LOCK AND CONNECT COMPLETE STATE)
- 6. STAMP A DATE CODE : YYWWD * (* IS LATEST PART REVISION. REF:PART REVISION IS A. YYWWD A)
- 7. M3 SCREWS TO BE MOUNTED USING TORQUE DRIVER. TORQUE : REFER TO 0.315N·m
- 8. USED MATERIAL AND FINISH ARE ON THE TABLE OF SHEET 3.
- 9. PCB MOUNT M3.0 SCREW AND PCB, PCB ASSEMBLY ARE CUSTOMER OWN COMPONENT. THESE CUSTOMER OWN COMPONENT SHOULD MEET TE RECOMMENDATION FOR CONNECTOR ASSEMBLY.



QTY	MATERIAL	NAME	ITEM NO
4	SUS / Alok	M2.5x4 FLAT HEAD SCREW WITH ALOK	18
AR	LUBRICANT GREASE	-	17
AR	LUBRICANT OIL	-	16
4	SUS / Alok	M2.0x0.4 L6 SHALLOW HEAD SCREW	15
1	MISUMI BSZF3 OR EQUIVALENT PRODUCT	BALL PRANGER	14
1	SUS	LOCK BLOCK SPRING	13
1	SUS MIM	SHAFT LOCK BLOCK	12
2	SUS	POST PIN	11
1	Zn ALLOY DIE-CAST FINISH : Ni PLATING	UPPER SHELL	10
1	Zn ALLOY DIE-CAST FINISH : Ni PLATING	LOCK PLATE	9
1	LCP GF10	UPPER HOUSING	8
1	PA9T GF30	LIFT PLATE	7
1	SUS MIM	CAM SHAFT	6
1	PA9T GF30	SLIDE PLATE	5
27	PH BRONZE FINISH : Au, Ni PLATING	SHIELD FINGER	4
12	LCP GF10	CONTACT HOUSING	3
456	COPPER ALLOY FINISH : Au, Ni PLATING	RECEPCACLE CONTACT	2
1	Zn ALLOY DIE-CAST FINISH : Ni PLATING	BASE HOUSING	1

THIS DRAWING IS A CONTROLLED DOCUMENT.

OWN: Y. SASAKI 11MAR2014
 CHK: M. KIMURA 11MAR2014
 APVD: M. KIMURA 11MAR2014

TE Connectivity

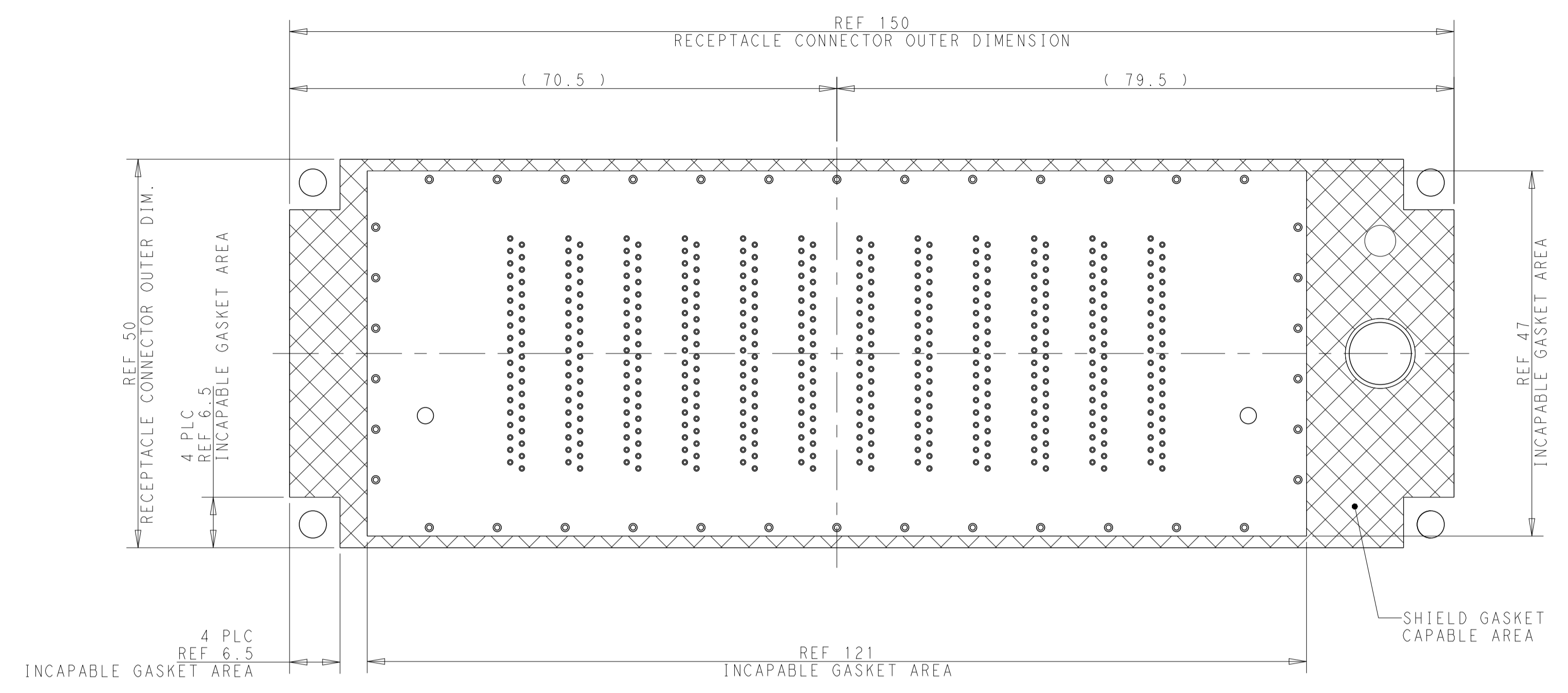
RECEPTACLE CONNECTOR
 456P RECEPTACLE ASSEMBLY
 BEEHIVE I/O CONNECTOR SERIES

SIZE: A1
 CAGE CODE: -
 DRAWING NO: C=2822650
 RESTRICTED TO: H

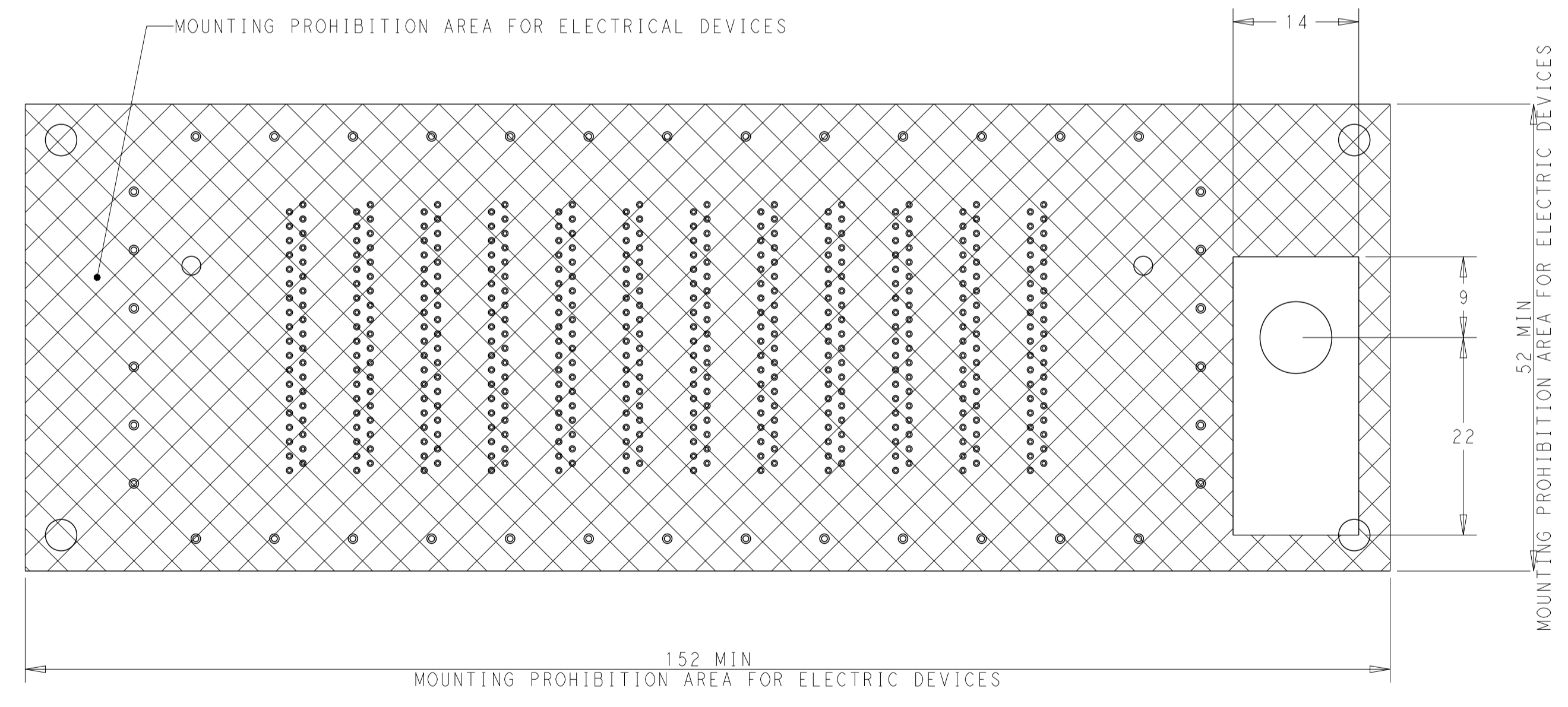
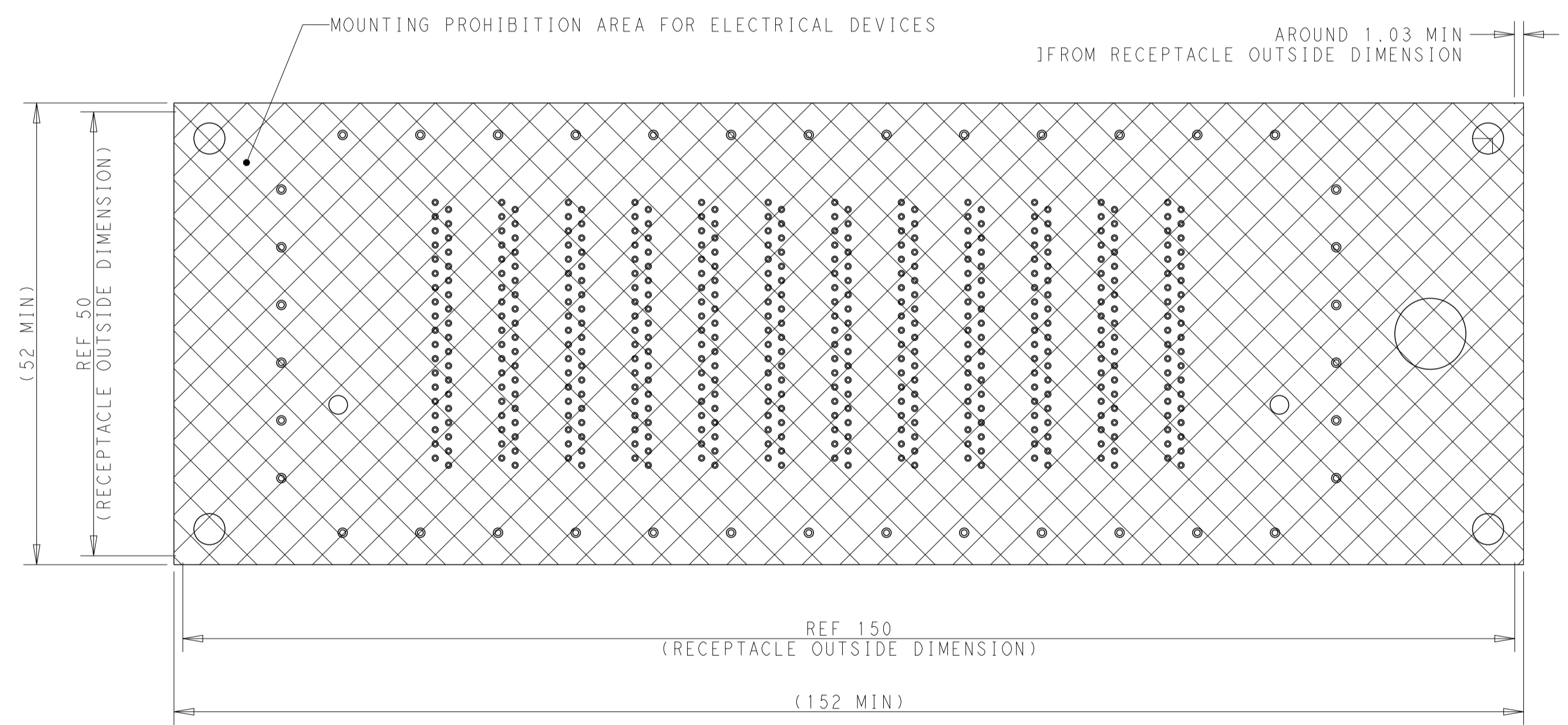
SCALE: 2:1 SHEET 3 OF 7 REV H

CONFIDENTIAL

REVISIONS				
P.	LTN.	DESCRIPTION	DATE	APVD.
-	-	SEE SHEET 1	-	-



SCALE 2:1
SHIELD GASKET AREA



ELECTRIC DEVICES MOUNTING CONSTRAINT AREA

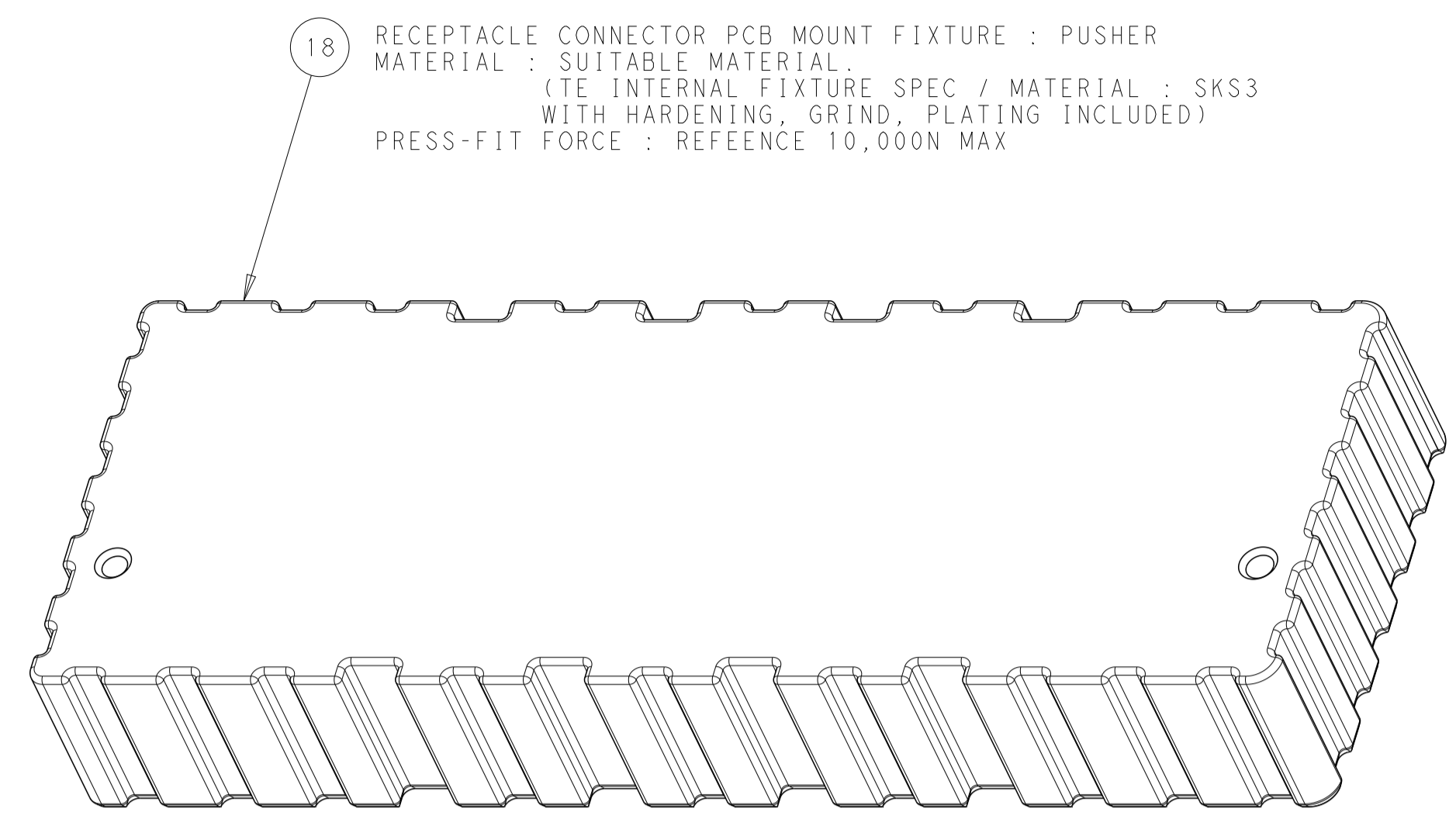
THIS DRAWING IS A CONTROLLED DOCUMENT.

DIMENSIONS: UNLESS OTHERWISE SPECIFIED: mm	TOLERANCES UNLESS OTHERWISE SPECIFIED: mm	OWN Y. SASAKI 11MAR2014	CHK M. KIMURA 11MAR2014	APVD M. KIMURA 11MAR2014	NAME SPE
0-PLC ±0.3	1-PLC ±0.5	TE Connectivity		RECEPTACLE CONNECTOR 456P RECEPTACLE ASSEMBLY BEEHIVE I/O CONNECTOR SERIES	
2-PLC ±0.13	3-PLC ±0.013	108-140047		PRODUCT SPEC	
4-PLC ±0.004	ANGLES ±1.0	114-5518		APPLICATION SPEC	
MATERIAL SEE SHEET 3 TABLE	FINISH SEE SHEET 3 TABLE	WEIGHT		RESTRICTED TO	
CUSTOMER DRAWING		SIZE A1	CAGE CODE -	DRAWING NO. C=2822650	SHEET 4 OF 7

SCALE 1:1

CONFIDENTIAL

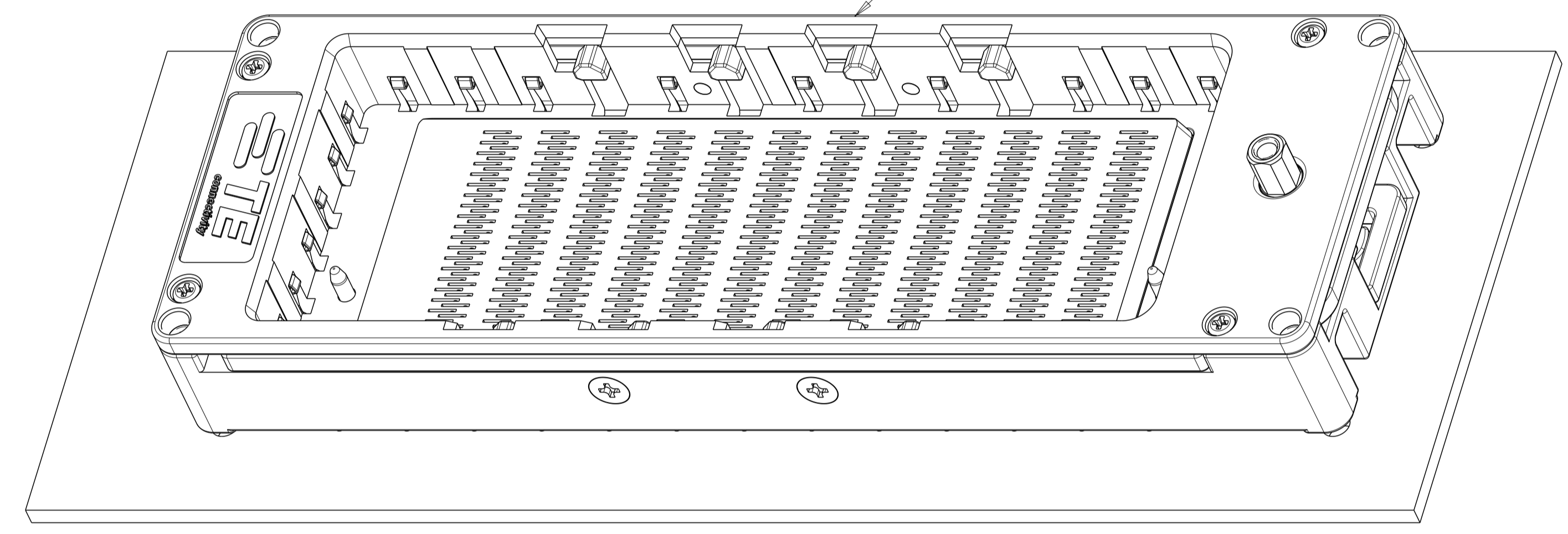
LOC		DIST		REVISIONS			
P	LTN	DESCRIPTION	DATE	DMN	APVD		
		SEE SHEET 1					



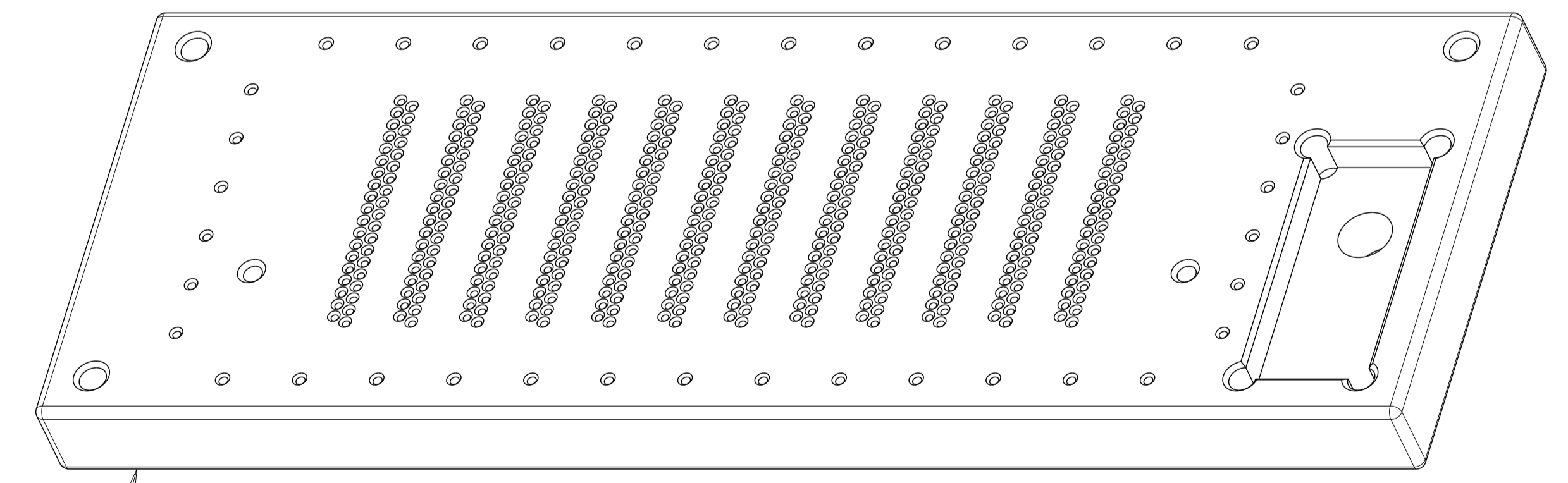
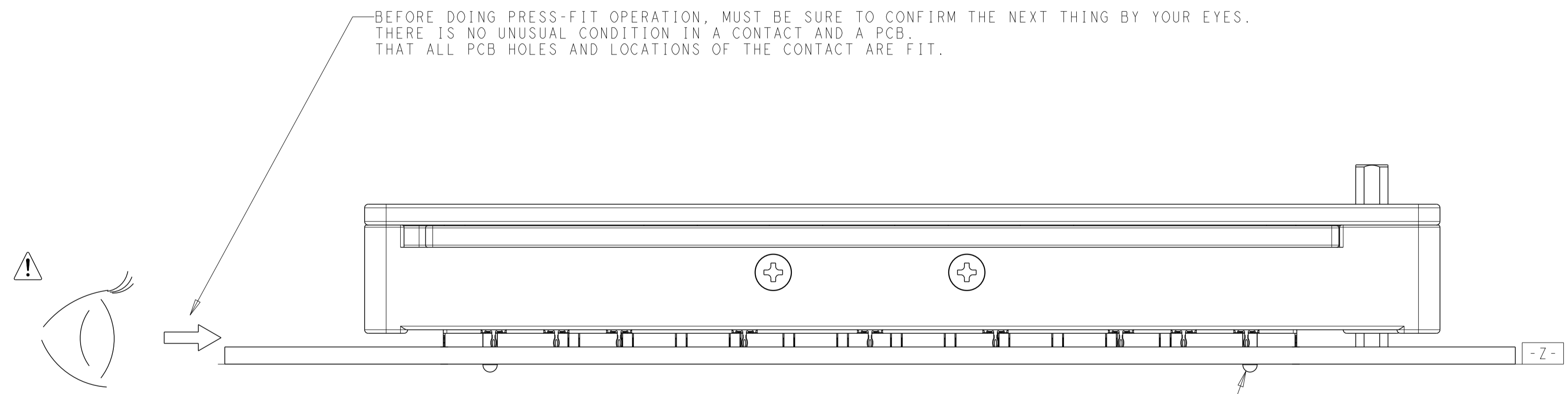
18 RECEPTACLE CONNECTOR PCB MOUNT FIXTURE : PUSHER
 MATERIAL : SUITABLE MATERIAL
 (TE INTERNAL FIXTURE SPEC / MATERIAL : SKS3
 WITH HARDENING, GRIND, PLATING INCLUDED)
 PRESS-FIT FORCE : REFERENCE 10,000N MAX

MP456P HD RECEPTACLE CONNECTOR
 P/N : 2822650-*

⚠ IMPORTANT !
 MUST BE APPLY THE LUBRICANT OIL TO ALL
 PRESS-FIT CONTACT AND EACH PCB THROUGH HOLE.



BEFORE DOING PRESS-FIT OPERATION, MUST BE SURE TO CONFIRM THE NEXT THING BY YOUR EYES.
 THERE IS NO UNUSUAL CONDITION IN A CONTACT AND A PCB.
 THAT ALL PCB HOLES AND LOCATIONS OF THE CONTACT ARE FIT.



19 RECEPTACLE CONNECTOR PCB MOUNT FIXTURE : BASE
 MATERIAL : SUITABLE MATERIAL
 (TE INTERNAL FIXTURE SPEC / MATERIAL : SKS3
 WITH HARDENING, GRIND, PLATING INCLUDED)

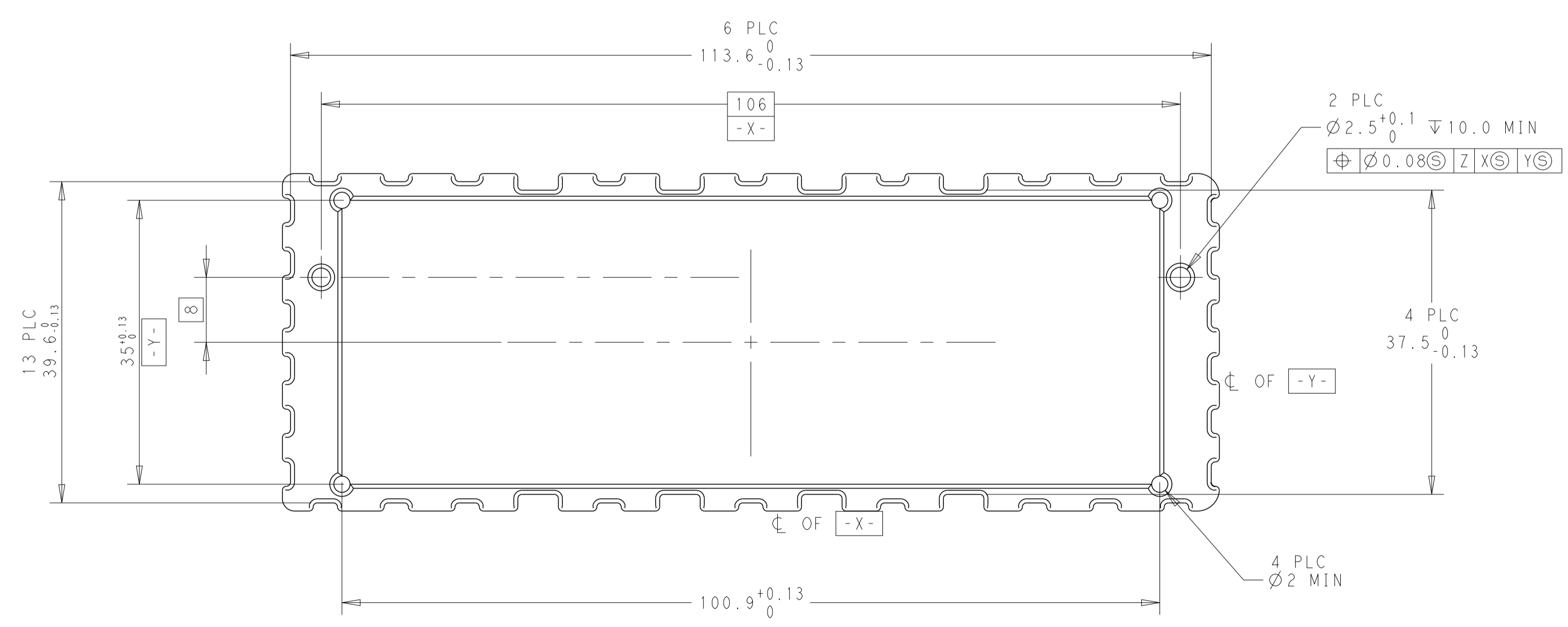
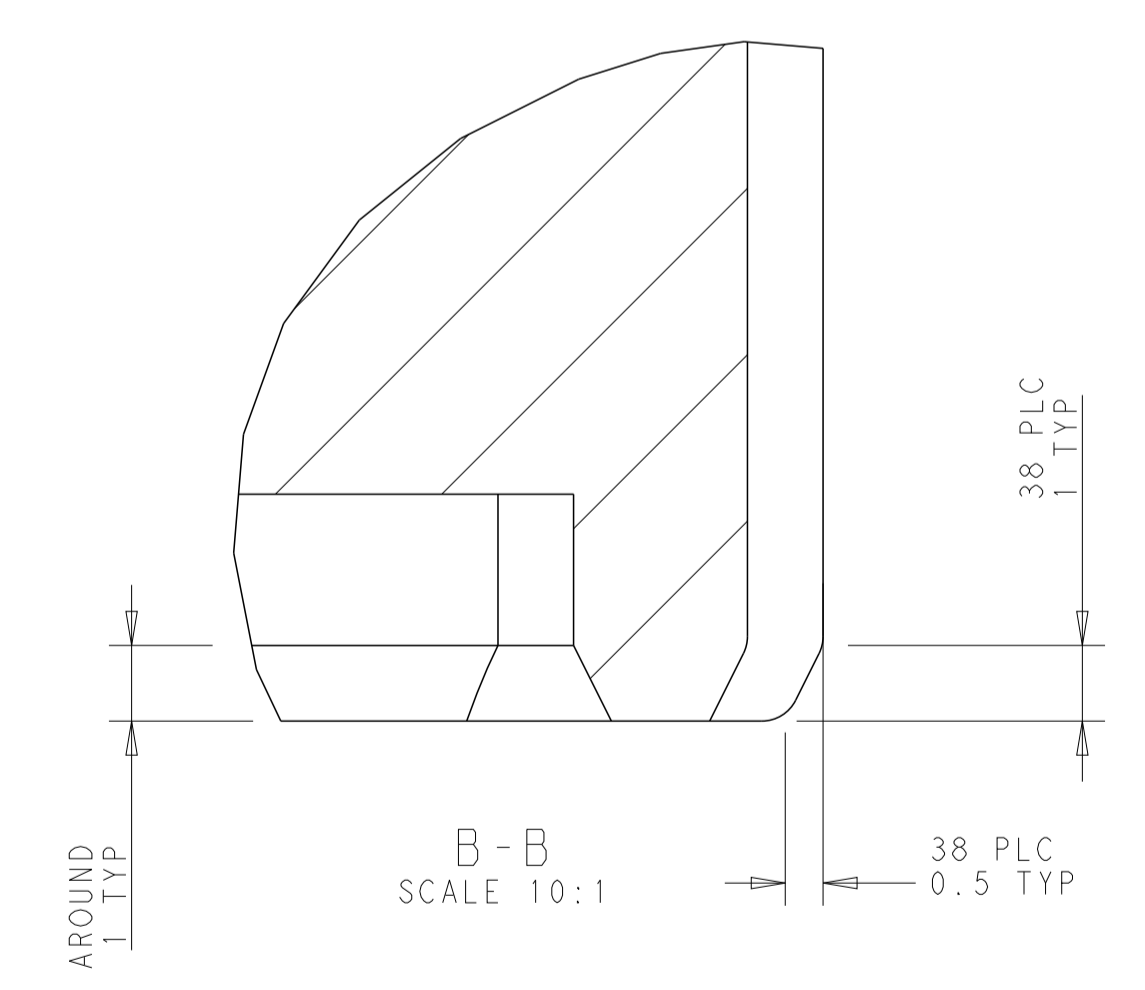
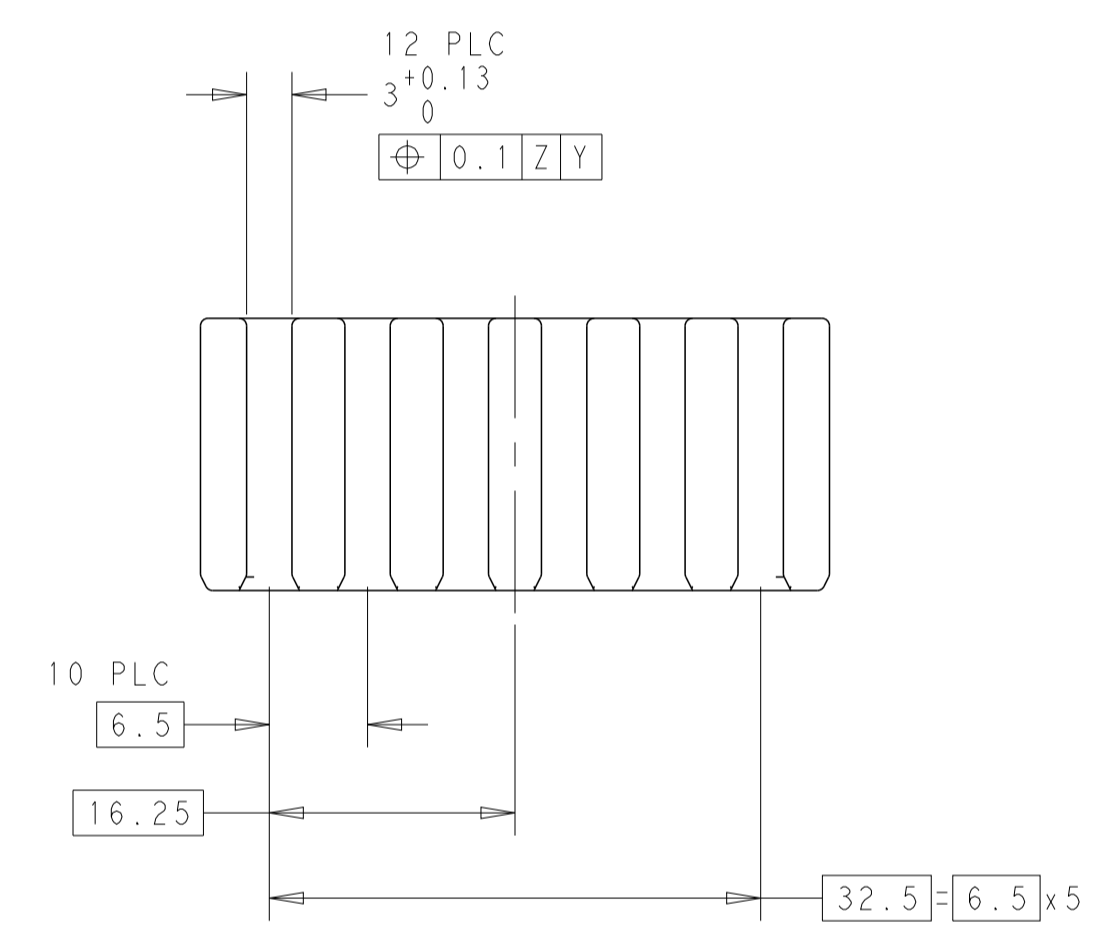
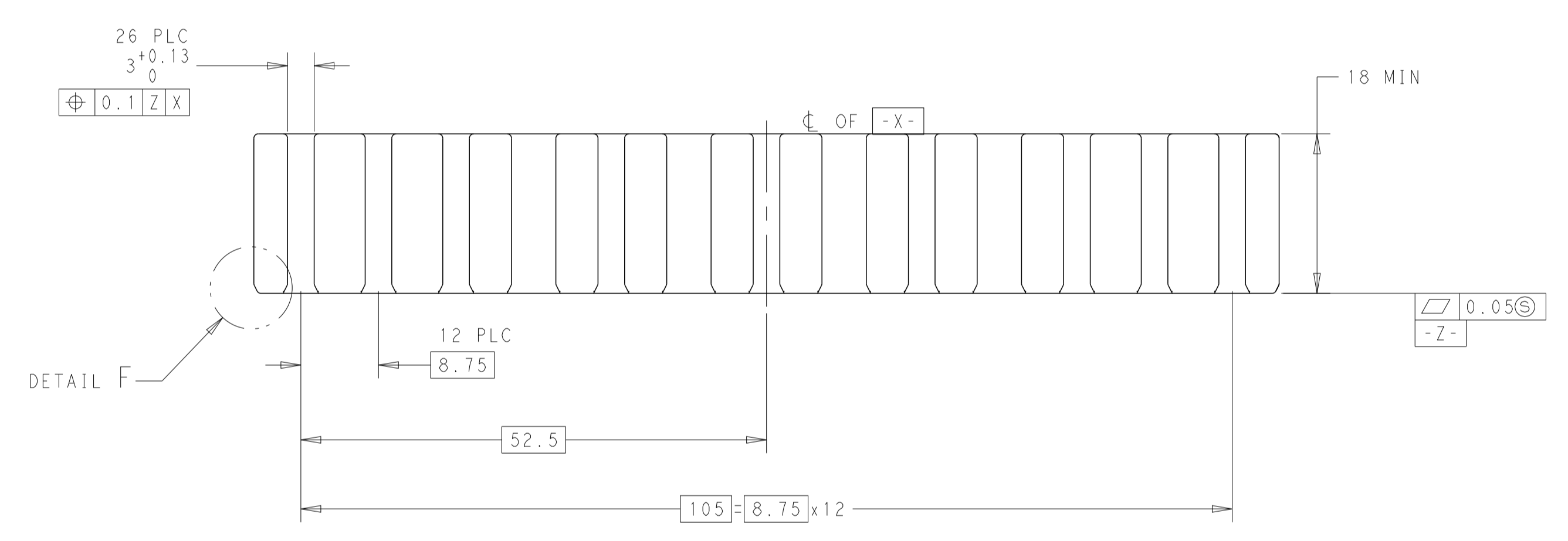
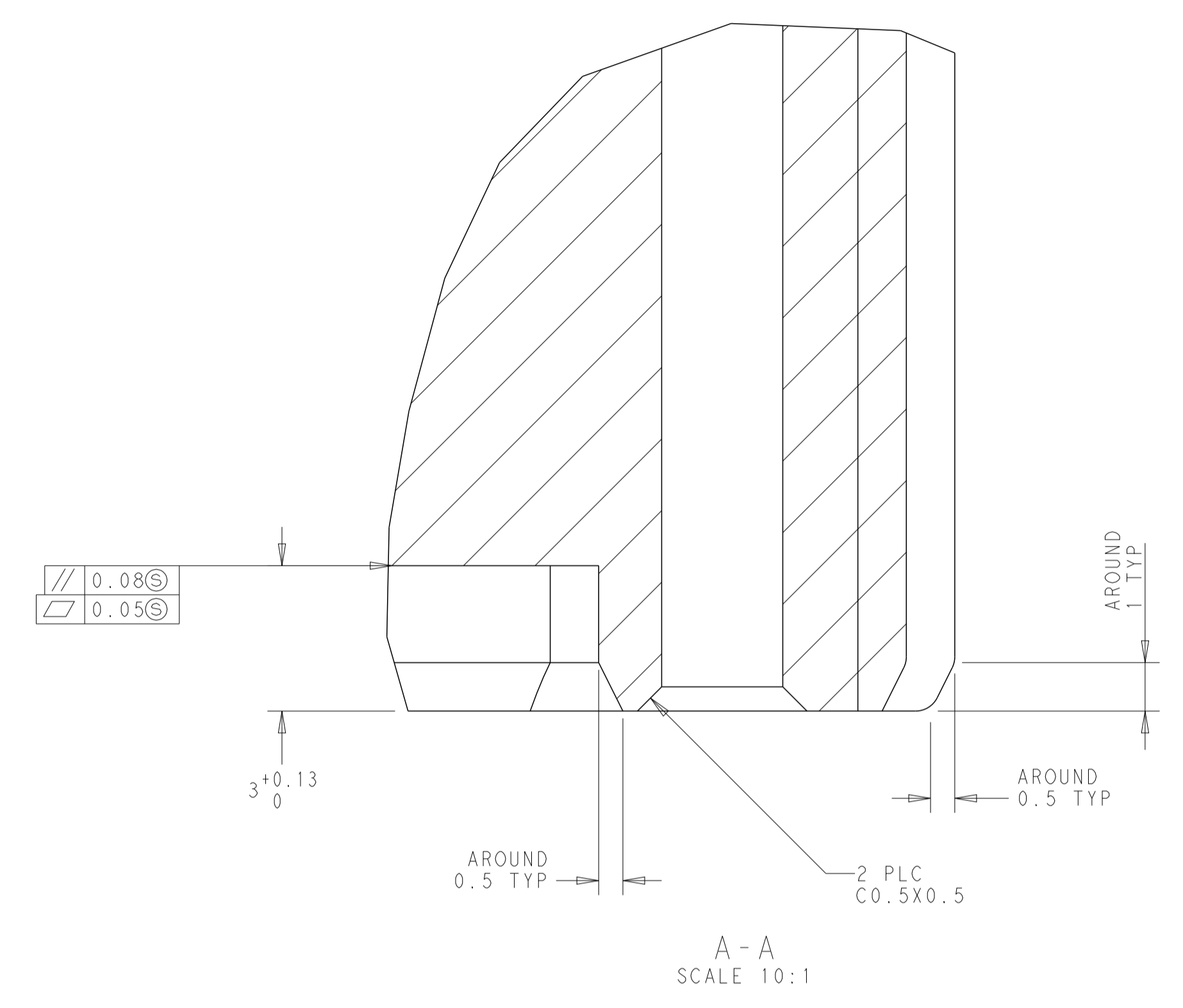
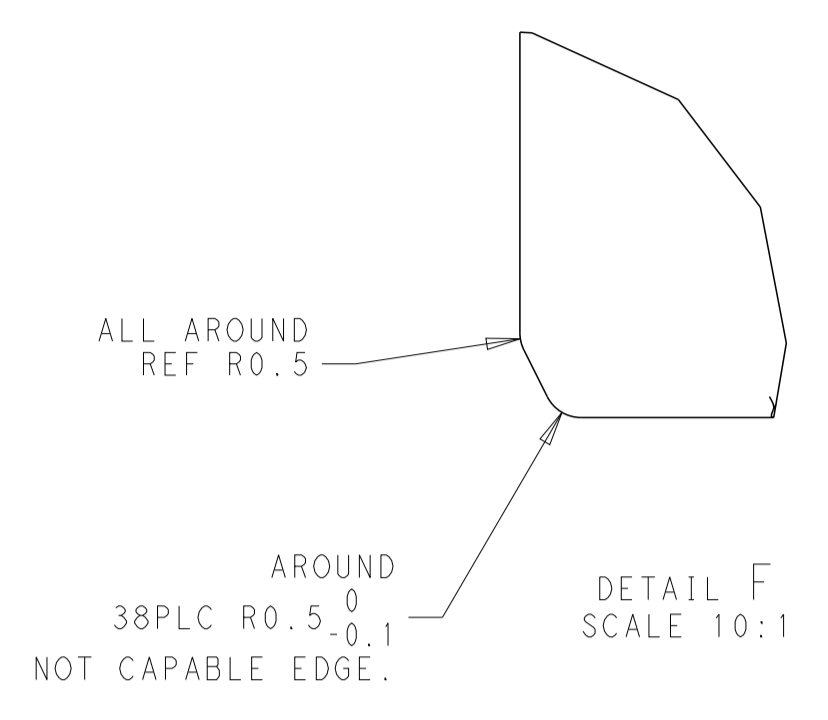
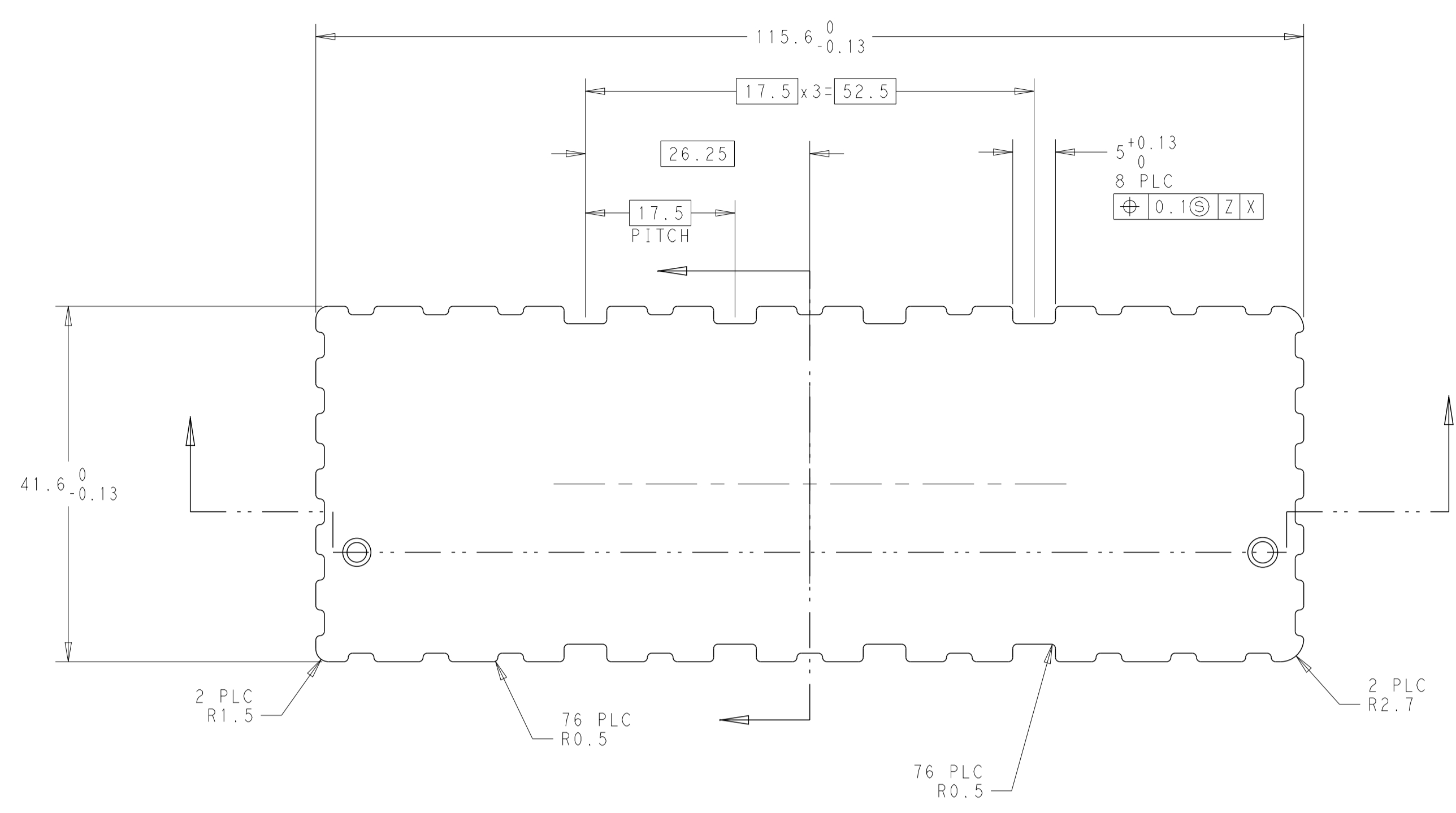
⚠ IMPORTANT !
 PLEASE CUSTOMIZE ACCORDING TO THE STATE OF THE PCB AND THE USE SITUATION.

WHEN THE THICKNESS OF PCB IS BIG, THE POSITIONING PINS DOES NOT WORK POSITIONING OF 2822650-*.
 PLEASE ADD A BEARING PIN TO BASE FIXTURE SO THAT THE LOCATION MAY BE DECIDED AT A HOLE IN A CORNER
 AND M3 HOLE OF 2822650-* OF BASE FIXTURE IN THIS CASE.

THIS DRAWING IS A CONTROLLED DOCUMENT.		DMN Y. SASAKI 11MAR2014	TE Connectivity
DIMENSIONS: mm		CHK M. KIMURA 11MAR2014	
TOLERANCES UNLESS OTHERWISE SPECIFIED: ± 0.3		APVD M. KIMURA 11MAR2014	NAME RECEPTACLE CONNECTOR 456P RECEPTACLE ASSEMBLY BEEHIVE I/O CONNECTOR SERIES
0-PLC ±0.3		PRODUCT SPEC	SIZE A1
1-PLC ±0.5		108-140047	CAGE CODE -
2-PLC ±0.13		APPLICATION SPEC	DRAWING NO C=2822650
3-PLC ±0.013		114-5518	RESTRICTED TO -
4-PLC ±0.001		WEIGHT -	SCALE 2:1
ANGLES ±1.0		CUSTOMER DRAWING	SHEET 5 of 7
FINISH SEE SHEET 5			REV H

CONFIDENTIAL

LOC	DIST	REVISIONS			
P	LTN	DESCRIPTION	DATE	DWN	APVD
-	-	SEE SHEET 1	-	-	-



THIS DRAWING IS A CONTROLLED DOCUMENT.		DWN Y. SASAKI 11MAR2014	TE Connectivity
DIMENSIONS: mm		CHK M. KIMURA 11MAR2014	
TOLERANCES UNLESS OTHERWISE SPECIFIED: ±0.3		APVD M. KIMURA 11MAR2014	NAME
0-PLC ±0.5		PRODUCT SPEC	RECEPTACLE CONNECTOR
1-PLC ±0.5		APPLICATION SPEC	456P RECEPTACLE ASSEMBLY
2-PLC ±0.13		114-5518	BEEHIVE I/O CONNECTOR SERIES
3-PLC ±0.13		114-5518	SIZE CAGE CODE DRAWING NO RESTRICTED TO
4-PLC ±0.001		114-5518	A1 - C=2822650
ANGLES ±1.0		114-5518	SCALE 2:1 SHEET 6 OF 7 REV H
FINISH SEE SHEET 5		114-5518	CUSTOMER DRAWING

