

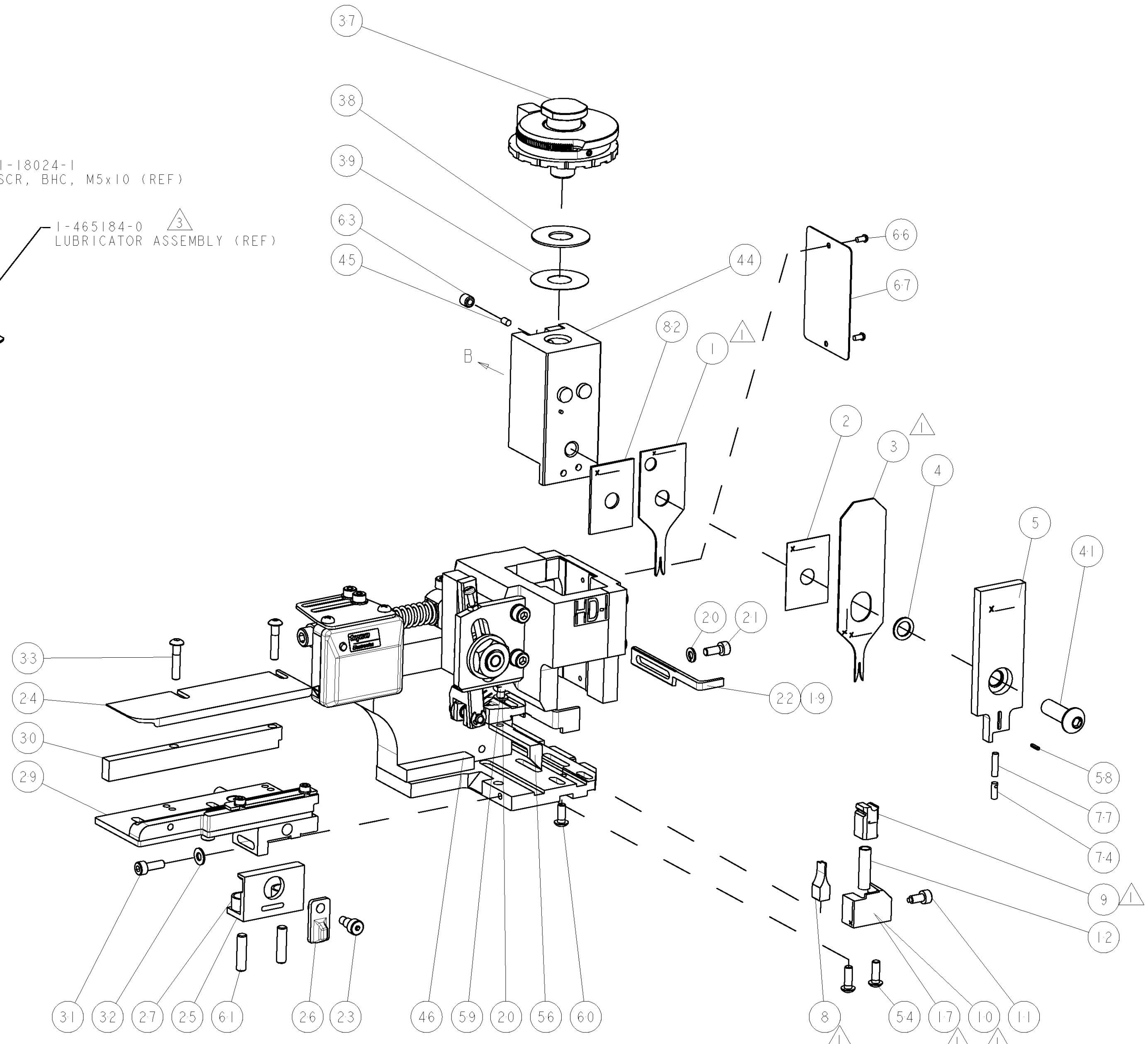
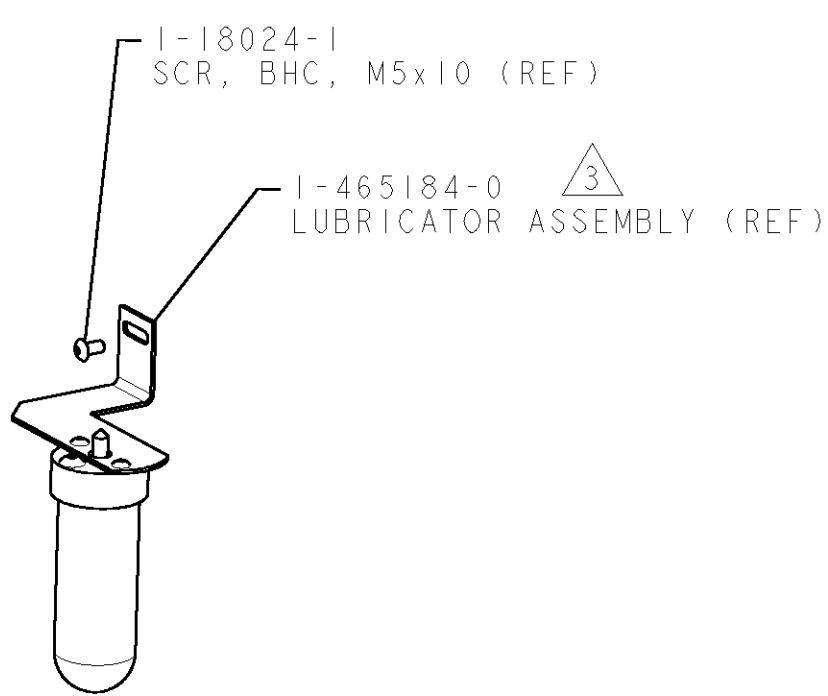
PART NUMBER	REV	TERMINATOR	FEED TYPE	DESCRIPTION
1528299-1	C	LEADMAKER	MECH POST FEED	CUTS CARRIER
1528299-2	C	BENCH	MECH PRE FEED	CUTS CARRIER
1528299-6	C	LEADMAKER	MECH POST FEED	CONTINUOUS CARRIER
7-1528299-1	C	LEADMAKER	MECH POST FEED	-1 AND SPARE PARTS
7-1528299-2	C	BENCH	MECH PRE FEED	-2 AND SPARE PARTS
7-1528299-6	C	LEADMAKER	MECH POST FEED	-6 AND SPARE PARTS
7-1528299-7	C	-	-	SPARE PARTS KIT

WIRE	SIZE	TYPE	RANGE
WIRE	0.80 [0.031 IN]	F	28-26 AWG or 0.08-0.12mm ²
INSUL	0.85 [0.033 IN]	F	0.50-1.00 [0.020-.039 IN]

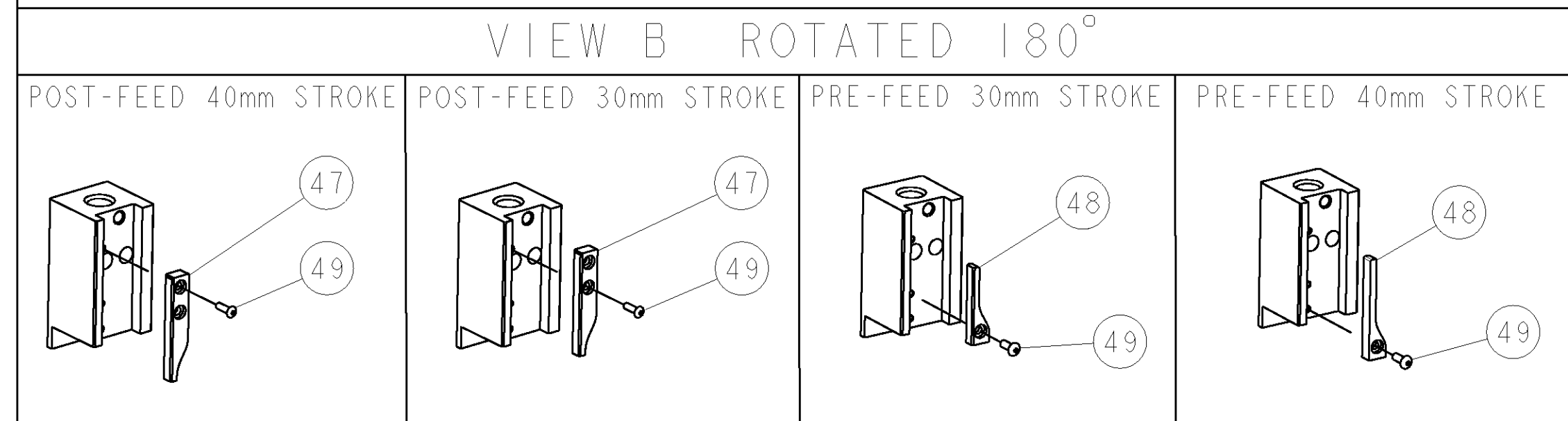
TE PN	MFR PN		
993820-1	50079-8000	-	-

WIRE SIZE	CRIMP HEIGHT	REF SETTING
26AWG or 0.12mm ²	0.60-0.65 [0.023-.025 IN]	B0
28AWG	0.58-0.64 [0.023-.025 IN]	B0
28AWG or 0.08mm ²	0.56-0.61 [0.022-.024 IN]	B1

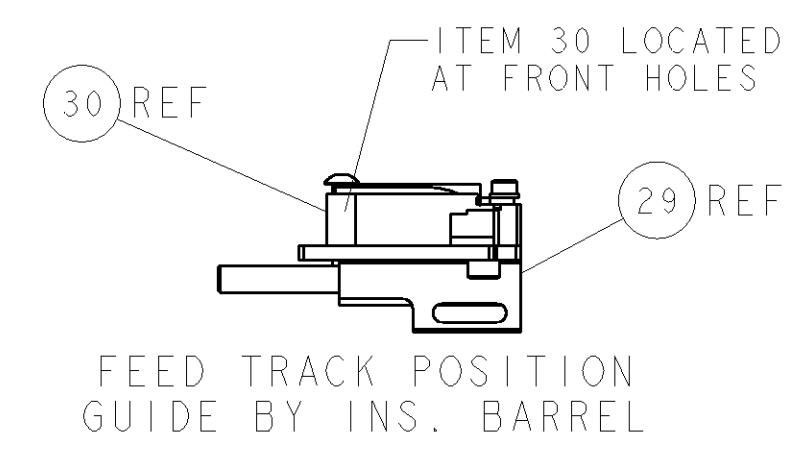
- △ RECOMMENDED SPARE PARTS.
- 2. GREASE RAM, CAM, CAM FOLLOWER AND FEED ROD LIGHTLY.
- △ CERTAIN TERMINALS REQUIRE LUBRICATION. REFER TO THE APPLICATOR INSTRUCTION SHEET FOR MORE INFORMATION.
- 4. LUBRICATE DAILY PER THE APPLICATOR INSTRUCTION SHEET SUPPLIED WITH THE APPLICATOR.
- △ CRIMP HEIGHT IS SPECIFIC TO ORIGINAL CUSTOMER.



*** WARNING**
ON INSTALLATION, SET WIRE DISC TO LARGEST WIRE SIZE SETTING. USE OF SETTINGS BELOW MIN. REQUIRED CRIMP HEIGHT SETTING WILL CAUSE DAMAGE TO CRIMP TOOLING.



QTY	DESCRIPTION	ITEM NO
-	SPACER, CRIMPER	84
-	SPRING, COMPRESSION	83
-	SPRING, COMPRESSION	82
-	SPRING, COMPRESSION	81
-	SPRING, COMPRESSION	80
-	SPRING, COMPRESSION	79
-	SPRING, COMPRESSION	78
-	SPRING, COMPRESSION	77
-	SPRING, COMPRESSION	76
-	SPRING, COMPRESSION	75
-	SPRING, COMPRESSION	74
-	SPRING, COMPRESSION	73
-	SPRING, COMPRESSION	72
-	SPRING, COMPRESSION	71
-	SPRING, COMPRESSION	70
-	SPRING, COMPRESSION	69
-	SPRING, COMPRESSION	68
-	SPRING, COMPRESSION	67
-	SPRING, COMPRESSION	66
-	SPRING, COMPRESSION	65
-	SPRING, COMPRESSION	64
-	SPRING, COMPRESSION	63
-	SPRING, COMPRESSION	62
-	SPRING, COMPRESSION	61
-	SPRING, COMPRESSION	60
-	SPRING, COMPRESSION	59
-	SPRING, COMPRESSION	58
-	SPRING, COMPRESSION	57
-	SPRING, COMPRESSION	56
-	SPRING, COMPRESSION	55
-	SPRING, COMPRESSION	54
-	SPRING, COMPRESSION	53
-	SPRING, COMPRESSION	52
-	SPRING, COMPRESSION	51
-	SPRING, COMPRESSION	50
-	SPRING, COMPRESSION	49
-	SPRING, COMPRESSION	48
-	SPRING, COMPRESSION	47
-	SPRING, COMPRESSION	46
-	SPRING, COMPRESSION	45
-	SPRING, COMPRESSION	44
-	SPRING, COMPRESSION	43
-	SPRING, COMPRESSION	42
-	SPRING, COMPRESSION	41
-	SPRING, COMPRESSION	40
-	SPRING, COMPRESSION	39
-	SPRING, COMPRESSION	38
-	SPRING, COMPRESSION	37
-	SPRING, COMPRESSION	36
-	SPRING, COMPRESSION	35
-	SPRING, COMPRESSION	34
-	SPRING, COMPRESSION	33
-	SPRING, COMPRESSION	32
-	SPRING, COMPRESSION	31
-	SPRING, COMPRESSION	30
-	SPRING, COMPRESSION	29
-	SPRING, COMPRESSION	28
-	SPRING, COMPRESSION	27
-	SPRING, COMPRESSION	26
-	SPRING, COMPRESSION	25
-	SPRING, COMPRESSION	24
-	SPRING, COMPRESSION	23
-	SPRING, COMPRESSION	22
-	SPRING, COMPRESSION	21
-	SPRING, COMPRESSION	20
-	SPRING, COMPRESSION	19
-	SPRING, COMPRESSION	18
-	SPRING, COMPRESSION	17
-	SPRING, COMPRESSION	16
-	SPRING, COMPRESSION	15
-	SPRING, COMPRESSION	14
-	SPRING, COMPRESSION	13
-	SPRING, COMPRESSION	12
-	SPRING, COMPRESSION	11
-	SPRING, COMPRESSION	10
-	SPRING, COMPRESSION	9
-	SPRING, COMPRESSION	8
-	SPRING, COMPRESSION	7
-	SPRING, COMPRESSION	6
-	SPRING, COMPRESSION	5
-	SPRING, COMPRESSION	4
-	SPRING, COMPRESSION	3
-	SPRING, COMPRESSION	2
-	SPRING, COMPRESSION	1



LOC	DIST	REV	DATE	BY	APPV
A	66		21OCT2008	MC	MC

QTY	DESCRIPTION	ITEM NO
-	SPRING, COMPRESSION	73
-	SPRING, COMPRESSION	72
-	DOCUMENTATION PACKAGE	71
-	SPRING, COMPRESSION	70
-	SPRING, COMPRESSION	69
-	SPRING, COMPRESSION	68
-	PLATE, IDENTIFICATION	67
-	SCREW, DRIVE	66
-	SPRING, COMPRESSION	65
-	SPRING, COMPRESSION	64
-	SCR, SET, CUP POINT M6 X 6.0	63
-	SPRING, COMPRESSION	62
-	SCR, SET, FLT POINT M5 X 20.0	61
-	SCR, BTN SKT HD CAP (M4 X 10.0)	60
-	SCR, HEX HD CAP M4 X 8.0	59
-	PIN, SLOTTED SPRING .062 X .250	58
-	SPRING, COMPRESSION	57
-	PAWL, FEED	56
-	SPRING, COMPRESSION	55
-	SCR, BTN SKT HD CAP (M4 X 12.0)	54
-	SPRING, COMPRESSION	53
-	SPRING, COMPRESSION	52
-	SPRING, COMPRESSION	51
-	SPRING, COMPRESSION	50
-	SCR, BTN SKT HD CAP (M3 X 10.0)	49
-	CAM, UNIVERSAL PRE FEED	48
-	CAM, UNIVERSAL POST-FEED	47
-	APPLICATOR SUBASSEMBLY, HDI	46
-	PLUG, NYLON	45
-	RAM	44
-	SPRING, COMPRESSION	43
-	SPRING, COMPRESSION	42
-	SCR, BTN SKT HD CAP (M8 X 25.0)	41
-	SPRING, COMPRESSION	40
-	SHIM SUB-ASSY	39
-	SHIM	38
-	FINE ADJUST HEAD ASSEMBLY	37
-	SPRING, COMPRESSION	36
-	SPRING, COMPRESSION	35
-	SPRING, COMPRESSION	34
-	SCR, BTN SKT HD CAP (M4 X 20.0)	33
-	WASHER, FLAT, REG M4	32
-	SCR, SKT HD CAP M4 X 12.0	31
-	SPACER, STRIP GUIDE	30
-	STRIP GUIDE ASSEMBLY	29
-	SPRING, COMPRESSION	28
-	SPRING, COMPRESSION	27
-	LEVER, DRAG RELEASE	26
-	DRAG, TERMINAL	25
-	PLATE, STRIP GUIDE	24
-	SCR, SKT HD SHLDR 5.0 DIA X 6.0	23
-	STRIPPER	22
-	SCR, SKT HD CAP M4 X 10.0	21
-	WASHER, SPRG LOCK, REG M4	20
-	STRIPPER	19
-	SPRING, COMPRESSION	18
-	SHEAR HOLDER, FRONT	17
-	SPRING, COMPRESSION	16
-	SPRING, COMPRESSION	15
-	SPRING, COMPRESSION	14
-	SPRING, COMPRESSION	13
-	SPRING, COMPRESSION	12
-	STOP, SHEAR	11
-	SHEAR HOLDER, FRONT, CUT	10
-	FLOATING SHEAR, FRONT	9
-	ANVIL	8
-	SPRING, COMPRESSION	7
-	SPRING, COMPRESSION	6
-	DEPRESSOR, SHEAR	5
-	BLOCK, CRIMPER SPACER	4
-	CRIMPER, INSULATION PREMIUM	3
-	SPACER, CRIMPER	2
-	CRIMPER, WIRE F	1

QTY	DESCRIPTION	ITEM NO
-77	SPRING, COMPRESSION	76
-76	SPRING, COMPRESSION	75
-72	SPRING, COMPRESSION	74
-71	SPRING, COMPRESSION	73
-6	SPRING, COMPRESSION	72
-2	SPRING, COMPRESSION	71
-1	SPRING, COMPRESSION	70

QTY	DESCRIPTION	ITEM NO
-	SPACER, CRIMPER	84
-	SPRING, COMPRESSION	83
-	SPRING, COMPRESSION	82
-	SPRING, COMPRESSION	81
-	SPRING, COMPRESSION	80
-	SPRING, COMPRESSION	79
-	SPRING, COMPRESSION	78
-	SPRING, COMPRESSION	77
-	SPRING, COMPRESSION	76
-	SPRING, COMPRESSION	75
-	SPRING, COMPRESSION	74
-	SPRING, COMPRESSION	73
-	SPRING, COMPRESSION	72
-	SPRING, COMPRESSION	71
-	SPRING, COMPRESSION	70
-	SPRING, COMPRESSION	69
-	SPRING, COMPRESSION	68
-	SPRING, COMPRESSION	67
-	SPRING, COMPRESSION	66
-	SPRING, COMPRESSION	65
-	SPRING, COMPRESSION	64
-	SPRING, COMPRESSION	63
-	SPRING, COMPRESSION	62
-	SPRING, COMPRESSION	61
-	SPRING, COMPRESSION	60
-	SPRING, COMPRESSION	59
-	SPRING, COMPRESSION	58
-	SPRING, COMPRESSION	57
-	SPRING, COMPRESSION	56
-	SPRING, COMPRESSION	55
-	SPRING, COMPRESSION	54
-	SPRING, COMPRESSION	53
-	SPRING, COMPRESSION	52
-	SPRING, COMPRESSION	51
-	SPRING, COMPRESSION	50
-	SPRING, COMPRESSION	49
-	SPRING, COMPRESSION	48
-	SPRING, COMPRESSION	47
-	SPRING, COMPRESSION	46
-	SPRING, COMPRESSION	45
-	SPRING, COMPRESSION	44
-	SPRING, COMPRESSION	43
-	SPRING, COMPRESSION	42
-	SPRING, COMPRESSION	41
-	SPRING, COMPRESSION	40
-	SPRING, COMPRESSION	39
-	SPRING, COMPRESSION	38
-	SPRING, COMPRESSION	37
-	SPRING, COMPRESSION	36
-	SPRING, COMPRESSION	35
-	SPRING, COMPRESSION	34
-	SPRING, COMPRESSION	33
-	SPRING, COMPRESSION	32
-	SPRING, COMPRESSION	31
-	SPRING, COMPRESSION	30
-	SPRING, COMPRESSION	29
-	SPRING, COMPRESSION	28
-	SPRING, COMPRESSION	27
-	SPRING, COMPRESSION	26
-	SPRING, COMPRESSION	25
-	SPRING, COMPRESSION	24
-	SPRING, COMPRESSION	23
-	SPRING, COMPRESSION	22
-	SPRING, COMPRESSION	21
-	SPRING, COMPRESSION	20
-	SPRING, COMPRESSION	19
-	SPRING, COMPRESSION	18
-	SPRING, COMPRESSION	17
-	SPRING, COMPRESSION	16
-	SPRING, COMPRESSION	15
-	SPRING, COMPRESSION	14
-	SPRING, COMPRESSION	13
-	SPRING, COMPRESSION	12
-	SPRING, COMPRESSION	11
-	SPRING, COMPRESSION	10
-	SPRING, COMPRESSION	9
-	SPRING, COMPRESSION	8
-	SPRING, COMPRESSION	7
-	SPRING, COMPRESSION	6
-	SPRING, COMPRESSION	5
-	SPRING, COMPRESSION	4
-	SPRING, COMPRESSION	3
-	SPRING, COMPRESSION	2
-	SPRING, COMPRESSION	1

QTY	DESCRIPTION	ITEM NO
-	SPRING, COMPRESSION	84
-	SPRING, COMPRESSION	83
-	SPRING, COMPRESSION	82
-	SPRING, COMPRESSION	81
-	SPRING, COMPRESSION	80
-	SPRING, COMPRESSION	79
-	SPRING, COMPRESSION	78
-	SPRING, COMPRESSION	77
-	SPRING, COMPRESSION	76
-	SPRING, COMPRESSION	75
-	SPRING, COMPRESSION	74
-	SPRING, COMPRESSION	73
-	SPRING, COMPRESSION	72
-	SPRING, COMPRESSION	71
-	SPRING, COMPRESSION	70
-	SPRING, COMPRESSION	69
-	SPRING, COMPRESSION	68
-	SPRING, COMPRESSION	67
-	SPRING, COMPRESSION	66
-	SPRING, COMPRESSION	65
-	SPRING, COMPRESSION	64
-	SPRING, COMPRESSION	63
-	SPRING, COMPRESSION	62
-	SPRING, COMPRESSION	61
-	SPRING, COMPRESSION	60
-	SPRING, COMPRESSION	59
-	SPRING, COMPRESSION	58
-	SPRING, COMPRESSION	57
-	SPRING, COMPRESSION	56
-	SPRING, COMPRESSION	55
-	SPRING, COMPRESSION	54
-	SPRING, COMPRESSION	53
-	SPRING, COMPRESSION	52
-	SPRING, COMPRESSION	51
-	SPRING, COMPRESSION	50
-	SPRING, COMPRESSION	49
-	SPRING, COMPRESSION	48
-	SPRING, COMPRESSION	47
-	SPRING, COMPRESSION	46
-	SPRING, COMPRESSION	45
-	SPRING, COMPRESSION	44
-	SPRING, COMPRESSION	43
-	SPRING, COMPRESSION	42
-	SPRING, COMPRESSION	41
-	SPRING, COMPRESSION	40
-	SPRING, COMPRESSION	39
-	SPRING, COMPRESSION	38
-	SPRING, COMPRESSION	37
-	SPRING, COMPRESSION	36
-	SPRING, COMPRESSION	35
-	SPRING, COMPRESSION	34
-	SPRING, COMPRESSION	33
-	SPRING, COMPRESSION	32
-	SPRING, COMPRESSION	31
-	SPRING, COMPRESSION	30
-	SPRING, COMPRESSION	29
-	SPRING, COMPRESSION	28
-	SPRING, COMPRESSION	27
-	SPRING, COMPRESSION	26
-	SPRING, COMPRESSION	25
-	SPRING, COMPRESSION	24
-	SPRING, COMPRESSION	23
-	SPRING, COMPRESSION	22
-	SPRING, COMPRESSION	21
-	SPRING, COMPRESSION	20
-		