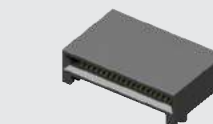


QSFP8-PF-02



QSFP8-038-01-L-D-RA1

**(0.80 mm) .0315"****QSFP8, QSFP8-PF, QSFP8-PF SERIES**

# QSFP CONNECTOR & CAGE

## SPECIFICATIONS

For complete specifications and recommended PCB layouts see [www.samtec.com/QSFP8](http://www.samtec.com/QSFP8)

**Insulator Material:**

LCP

**Contact Material:**

Phosphor Bronze

**Ground Plane:**

Phosphor Bronze

**Plating:**

Au or Sn over 50  $\mu$ " (1.27  $\mu$ m) Ni

**Current Rating (QSFP8/Card):**

1.6 A per pin

(2 pins powered)

## RECOGNITIONS

For complete scope of recognitions see [www.samtec.com/quality](http://www.samtec.com/quality)



### Note:

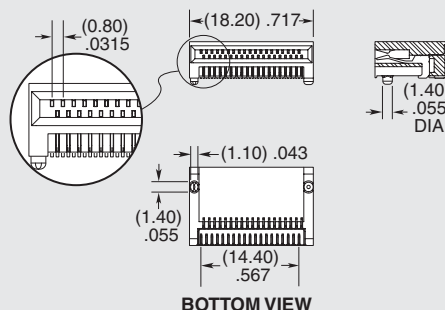
Some lengths, styles and options are non-standard, non-returnable.

**QSFP8****NO. OF POSITIONS****CARD THICKNESS****PLATING****D****RA1****-038**

= Total Number of Positions

**-01**

= (1.00 mm) .039" thick card

**-L**= 10  $\mu$ " (0.25  $\mu$ m) Gold on contact, Matte Tin on tail

BOTTOM VIEW

## SPECIFICATIONS

For complete specifications see [www.samtec.com/QSFP8-PF](http://www.samtec.com/QSFP8-PF) or [www.samtec.com/QSFP8-PF](http://www.samtec.com/QSFP8-PF)

**TYPE****TERMINATION****OPTION****QSFP8**

= Cage

**QSFP8**

= Cage and Connector Kit

**-PF**

= Press-fit

**-01**

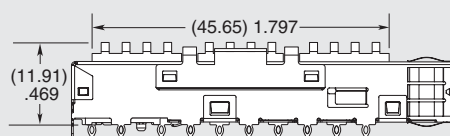
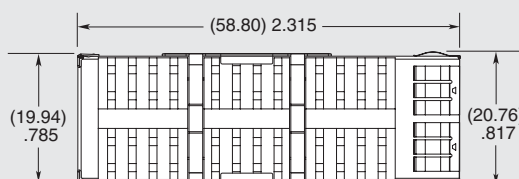
= Without Heat Sink

**-02**

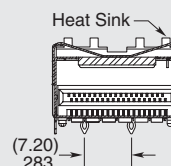
= With Heat Sink

**-03**

= With Heat Sink and clip packaged separately (Recommended for cage press-fit processing)



-02 SHOWN



### Note:

Some sizes, styles and options are non-standard, non-returnable.

Due to technical progress, all designs, specifications and components are subject to change without notice.

[WWW.SAMTEC.COM](http://WWW.SAMTEC.COM)

All parts within this catalog are built to Samtec's specifications.

Customer specific requirements must be approved by Samtec and identified in a Samtec customer-specific drawing to apply.