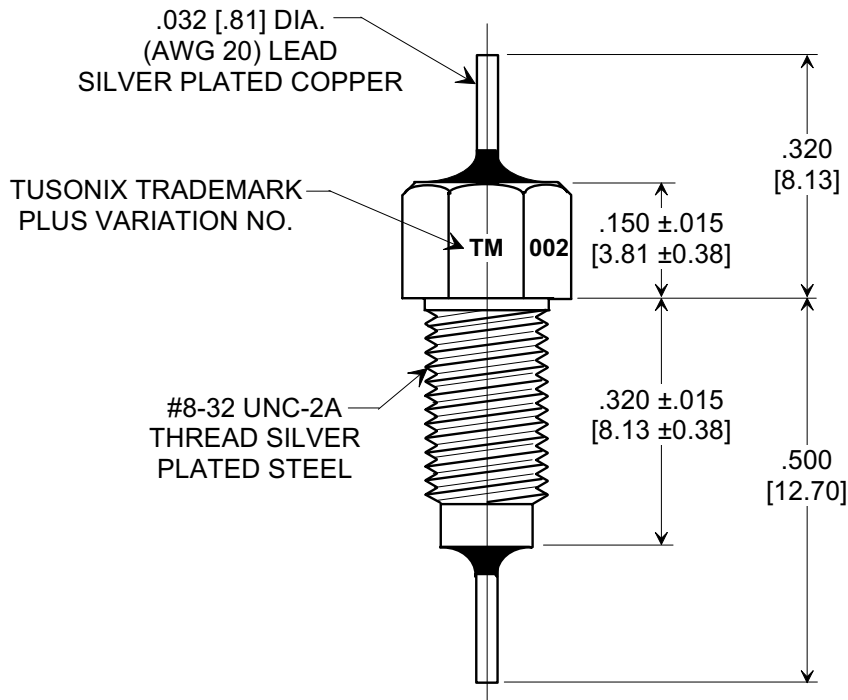
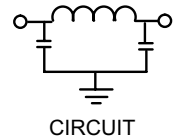
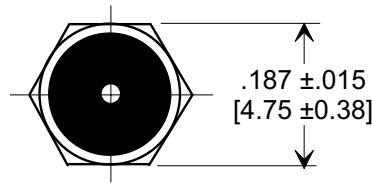
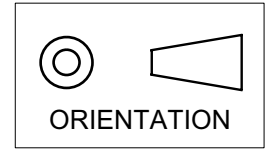


MARKETING SALES DRAWING
DIMENSIONS IN INCHES - DO NOT SCALE THIS DRAWING
DIMENSIONS IN METRIC []

Electrical Testing
per Tusonix standard
test plans and Mil-Std-202
Test Methods.



NOTES:

- TUSONIX STANDARD PART NUMBER: 4251-002.
TUSONIX RoHS COMPLIANT PART NUMBER: 4251-002 LF.
CUSTOMER MUST SPECIFY STANDARD OR RoHS PART NUMBER WHEN ORDERING.
- PART MARKING: TRADEMARK AND VARIATION NUMBER ON HEX FLATS.
STANDARD PART: BLACK INK. RoHS PART: GREEN INK.
- SUPPLIED WITH SILVER PLATED COPPER ALLOY HEX NUT AND INTERNAL TOOTH LOCK WASHER.

MIN. CAP.	125°C WORKING VOLTAGE	CURRENT Vdc	IR MIN.	DWV	MINIMUM NO LOAD INSERTION LOSS (dB) @ 25°C PER MIL-STD-220				
					1 MHz	10 MHz	100 MHz	1 GHz	10 GHz
12,000 pF	125 VDC	10 A	10 G Ω	500 VDC	5	28	65	70	70

X-2015 Rev-0	REVISION RECORD				--TOLERANCES-- Unless Otherwise Specified	Title	
	Original Release C.O. 6611	0				MULTILAYER BUSHING STYLE EMI FILTER	
	DIM'S REVISED, TITLE CHNGD. E.C. 05-26-92		1		DECIMAL ± .031 [0.79]		
	RDN TO COMP FMT & ADDED .015 TOL 3 PLCS. S.M. 02-28-02		2		ANGLES ±	Approved T.C. 02-28-02	
	NOTE 1 ADDED, & STEEL WAS BRASS, & TITLE REVISED L.E. 06-25-02		20020415-1-01	3		TUSONIX TUCSON, ARIZONA	A
ADDED NOTES 1-2. S.M. 10-06-05		20020415-1-01	4	20050927-7-04			