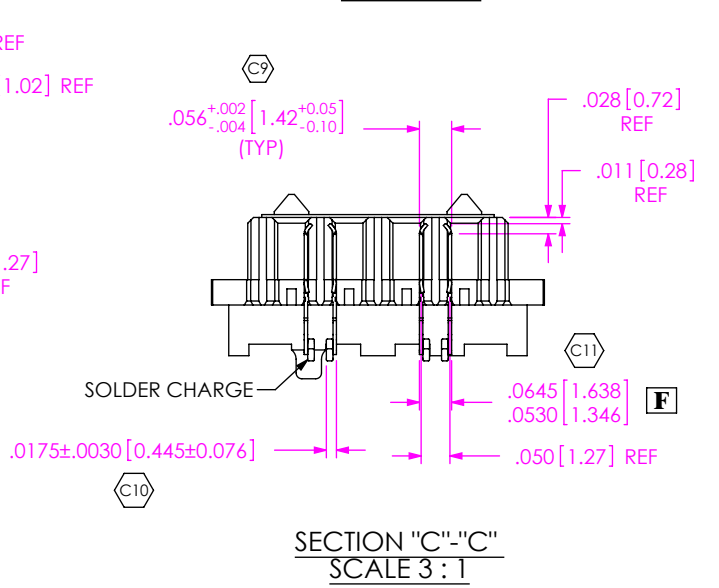
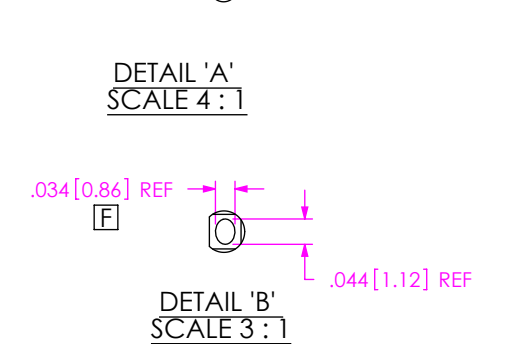
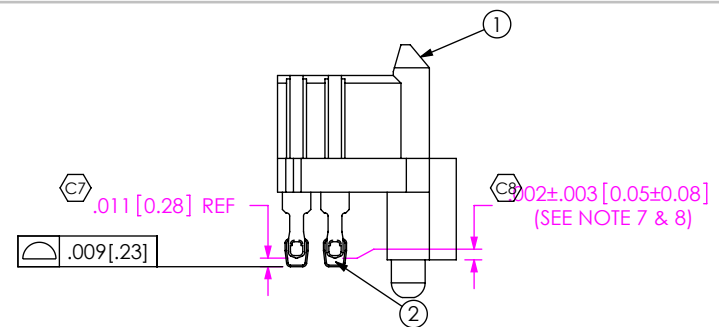
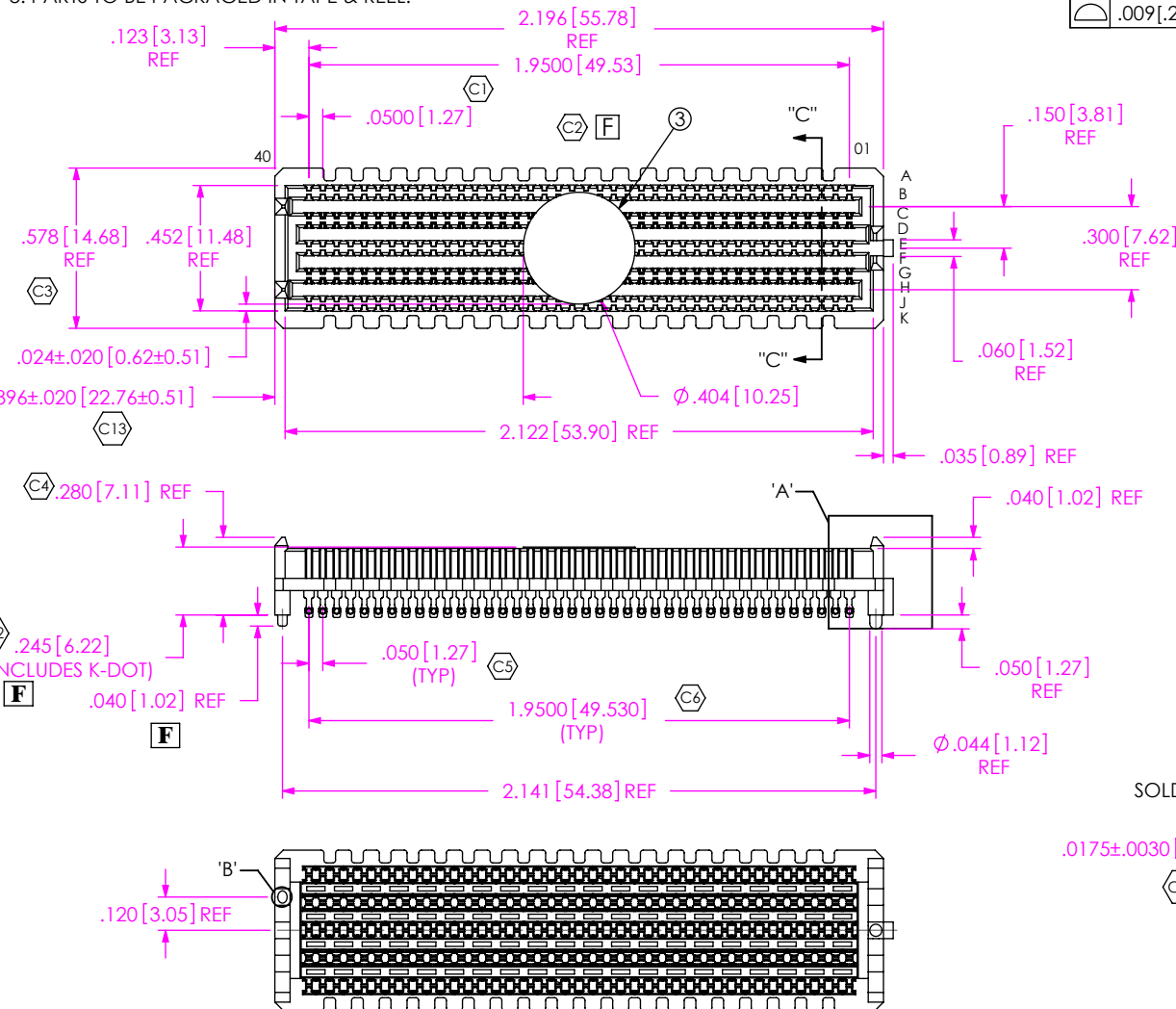


REVISION

F	EC	B RAY
8/17/2011 ECN-160746		
FRONT VIEW: ADD DIM 245 & D40		
REF: ADD REF TO DIM D44, ADD		
CRITICAL 4, 5, 6, 12; TOP VIEW: CHG		
D499 TO D500 & 1950 TO 19500,		
ADD DIM 123, ADD CRITICAL 2, 3, 13,		
14; DETAIL 'A': ADD CRITICAL 7, 8;		
DETAIL 'B': ADD REF TO D34;		
SECTION 'C'-'C': ADD DIM D530 -		
.0646, ADD CRITICAL 9, 10, 11; BOM,		
ITEM 1: CHG VECTRAE130 TO LCP		
UL 94 V0, ITEM 2: CHG BRUSH ALLOY		
390HT TO COPPER ALLOY LEADED		
SOLDER, ITEM 3: CHG BRUSH ALLOY		
390HT TO POLYIMIDE FILM, ITEM 4:		
CHG POLYIMIDE FILM TO		
CONDUCTIVE POLYMER; NOTES:		
ADD NOTES 1, 5, 6 & 7; SHT 2: ADD		
DIM D965, CHG D60 TO D500, DEL		
FOR -ALIGNMENT PIN OPTION		
FROM DIM 120 & D50; SHT 4: CHG		
BROKEN-OUT SECTION TO SECTION		
'D'-'D'.		

NOTES: [F]

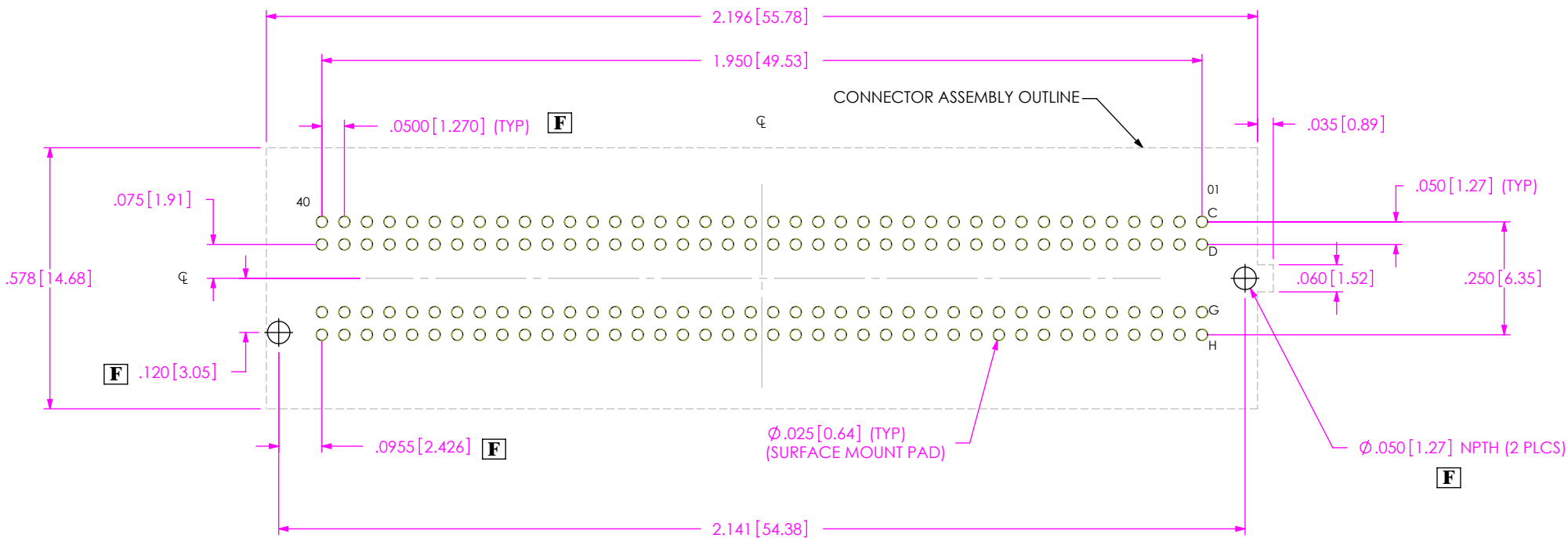
- VITA 57 CONNECTOR.
- FILL ROWS 3, 4, 7, 8 ONLY.
- [C] REPRESENTS A CRITICAL DIMENSION.
- MINIMUM PUSHOUT FORCE: .75 LBS.
- ATTACH LABEL "SEAX-0001" TO EACH TAPE & REEL PACKAGE.
- MAXIMUM ROW TO ROW VARIATION .003[0.08].
- DIMENSION C8 MUST BE MEASURED IN THE FOUR OUTSIDE CORNERS USING INSPECTION FIXTURE AT-1817-836-1, USE CO-AU-WI-2003-M FOR PROCESS.
- PARTS TO BE PACKAGED IN TAPE & REEL.



<input type="checkbox"/>	ACCEPTANCE OF DRAWING
<input type="checkbox"/>	ACCEPTED WITH DEVIATIONS LISTED
DATE:	COMPANY:
DATE:	CUSTOMER SIGNATURE:
DATE:	PRINTED NAME:
DATE:	PHONE NO.:
DATE:	FAX NO.:

ITEM NO.	PART NUMBER	QUANTITY	MATERIAL	[F]
1	SEAM-40-03.5-10-A	1.0000	LCP UL 94 V0, COLOR: BLACK	
2	SUB-T-1M36-03.5-S-1	1.0000	COPPER ALLOY/LEADED SOLDER	
3	K-DOT-.404-.500-.005	160.00	POLYIMIDE FILM	
4	CT-SEAM033MS	1.0000	CONDUCTIVE POLYMER	

UNLESS OTHERWISE SPECIFIED, DIMENSIONS ARE IN INCHES. TOLERANCES ARE: DECIMALS      ANGLES .XX: ±.01 [.3]      2° .XXX: ±.005 [.13] .XXXX: ±.0020 [.051]	PROPRIETARY NOTE THIS DOCUMENT CONTAINS INFORMATION CONFIDENTIAL AND PROPRIETARY TO SAMTEC, INC. AND SHALL NOT BE REPRODUCED OR TRANSFERRED TO OTHER DOCUMENTS OR DISCLOSED TO OTHERS OR USED FOR ANY PURPOSE OTHER THAN THAT WHICH IT WAS OBTAINED WITHOUT THE EXPRESSED WRITTEN CONSENT OF SAMTEC, INC.	520 PARK EAST BLVD, NEW ALBANY, IN 47150 PHONE: 812-944-6733      FAX: 812-948-5047 e-Mail: info@SAMTEC.com      code: 55322
PLATING: CONTACT AREA: .000030 GOLD OVER .000050 NICKEL REMAINDER: .000200 REF TIN OVER .000050 NICKEL	DESCRIPTION: .050 PITCH TERMINAL ARRAY ASSEMBLY	
DWG. NO. <b>ASP-127797-01</b>		
BY: B RAY      08/25/2006      SHEET 1 OF 4		



ALL DIMENSIONS ARE SYMMETRICAL ABOUT CENTERLINE

**PROPRIETARY NOTE**

THIS DOCUMENT CONTAINS INFORMATION CONFIDENTIAL AND PROPRIETARY TO SAMTEC, INC. AND SHALL NOT BE REPRODUCED OR TRANSFERRED TO OTHER DOCUMENTS OR DISCLOSED TO OTHERS OR USED FOR ANY PURPOSE OTHER THAN THAT WHICH IT WAS OBTAINED WITHOUT THE EXPRESSED WRITTEN CONSENT OF SAMTEC, INC.



520 PARK EAST BLVD, NEW ALBANY, IN 47150  
 PHONE: 812-944-6733 FAX: 812-948-5047  
 e-Mail: info@SAMTEC.com code: 55322

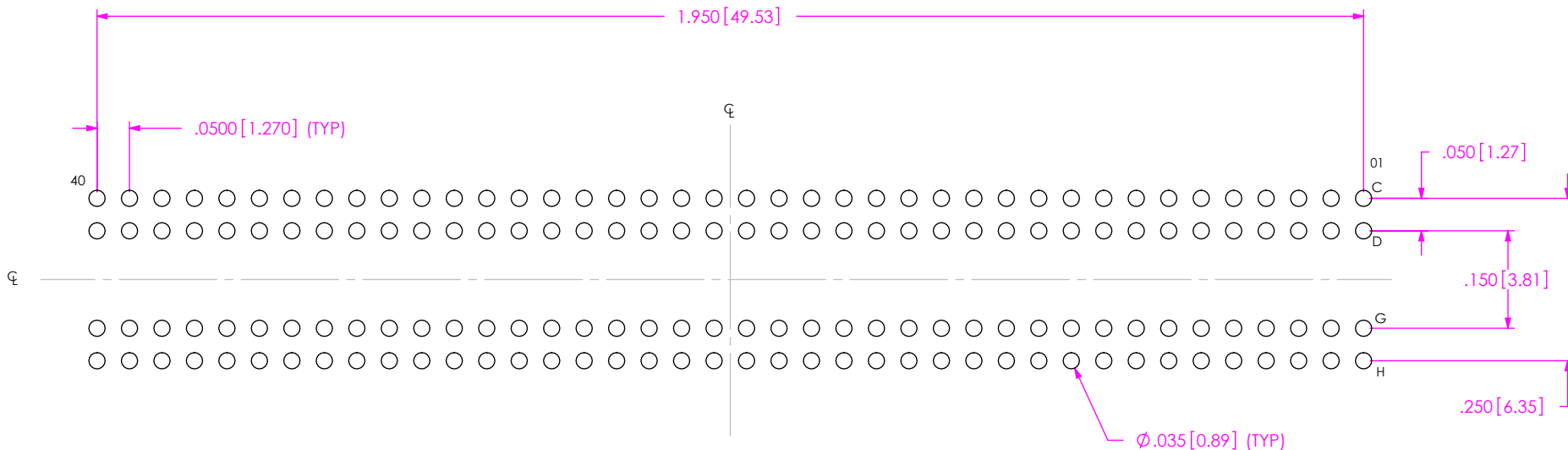
SHEET SCALE: 1.5:1

DESCRIPTION:  
 .050 PITCH TERMINAL ARRAY ASSEMBLY

DWG. NO.  
 ASP-127797-01

BY: B RAY 08/25/2006 SHEET 2 OF 4

NOTE:  
STENCIL TO BE .0060[.152] THICK



ALL DIMENSIONS ARE SYMMETRICAL ABOUT CENTERLINE

**PROPRIETARY NOTE**

THIS DOCUMENT CONTAINS INFORMATION CONFIDENTIAL AND PROPRIETARY TO SAMTEC, INC. AND SHALL NOT BE REPRODUCED OR TRANSFERRED TO OTHER DOCUMENTS OR DISCLOSED TO OTHERS OR USED FOR ANY PURPOSE OTHER THAN THAT WHICH IT WAS OBTAINED WITHOUT THE EXPRESSED WRITTEN CONSENT OF SAMTEC, INC.

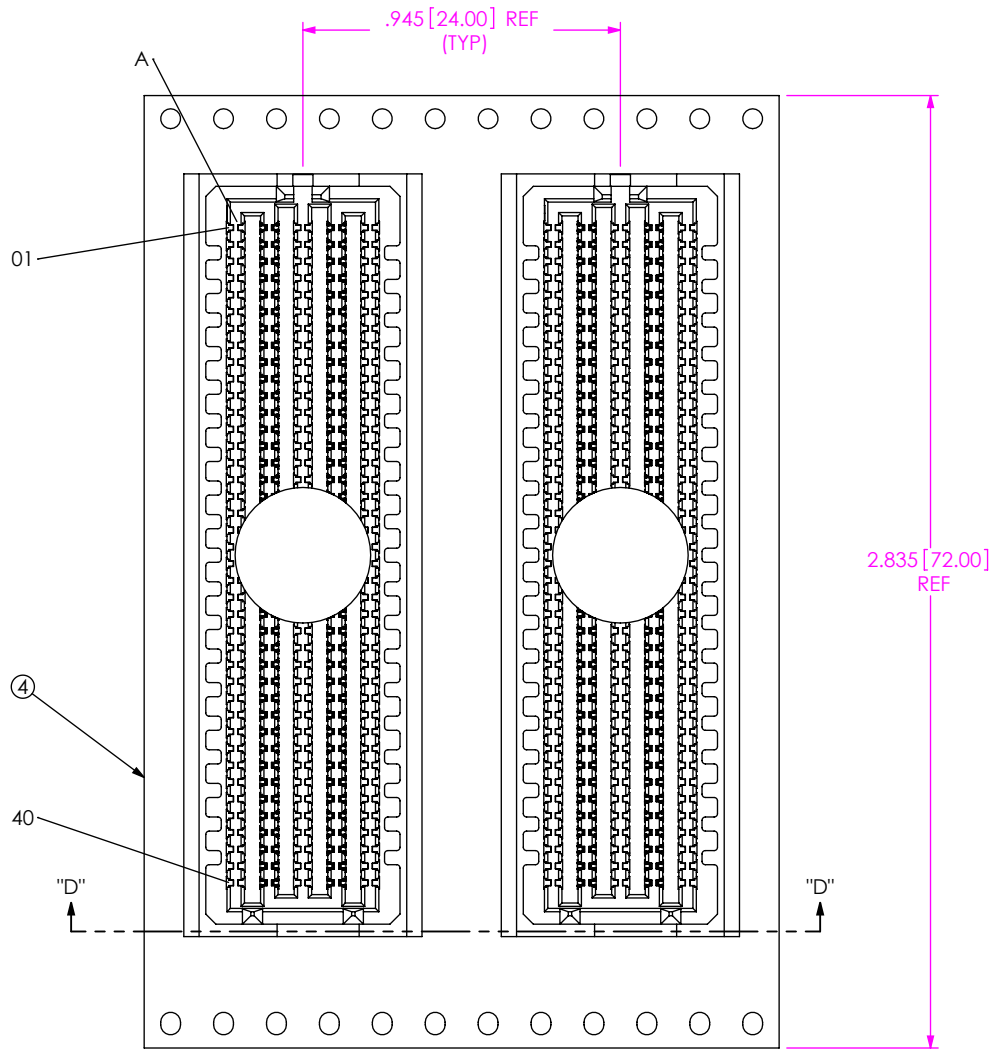


520 PARK EAST BLVD, NEW ALBANY, IN 47150  
PHONE: 812-944-6733 FAX: 812-948-5047  
e-Mail: info@SAMTEC.com code: 55322

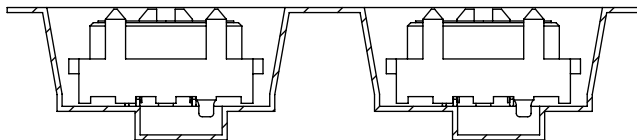
SHEET SCALE: 1.5:1

DESCRIPTION:  
.050 PITCH TERMINAL ARRAY ASSEMBLY

DWG. NO.  
ASP-127797-01



USER DIRECTION OF UN-REELING  
POCKET NOT DETAILED →



**F** SECTION "D"- "D"  
SCALE 1.75 : 1  
PACKAGING VIEW

**PROPRIETARY NOTE**

THIS DOCUMENT CONTAINS INFORMATION  
CONFIDENTIAL AND PROPRIETARY TO  
SAMTEC, INC. AND SHALL NOT BE REPRODUCED  
OR TRANSFERRED TO OTHER DOCUMENTS OR  
DISCLOSED TO OTHERS OR USED FOR ANY  
PURPOSE OTHER THAN THAT WHICH IT WAS  
OBTAINED WITHOUT THE EXPRESSED WRITTEN  
CONSENT OF SAMTEC, INC.

SHEET SCALE: 1.75:1



520 PARK EAST BLVD, NEW ALBANY, IN 47150  
PHONE: 812-944-6733 FAX: 812-948-5047  
e-Mail: info@SAMTEC.com code: 55322

DESCRIPTION:  
.050 PITCH TERMINAL ARRAY ASSEMBLY

DWG. NO. ASP-127797-01

BY: B RAY 08/25/2006 SHEET 4 OF 4