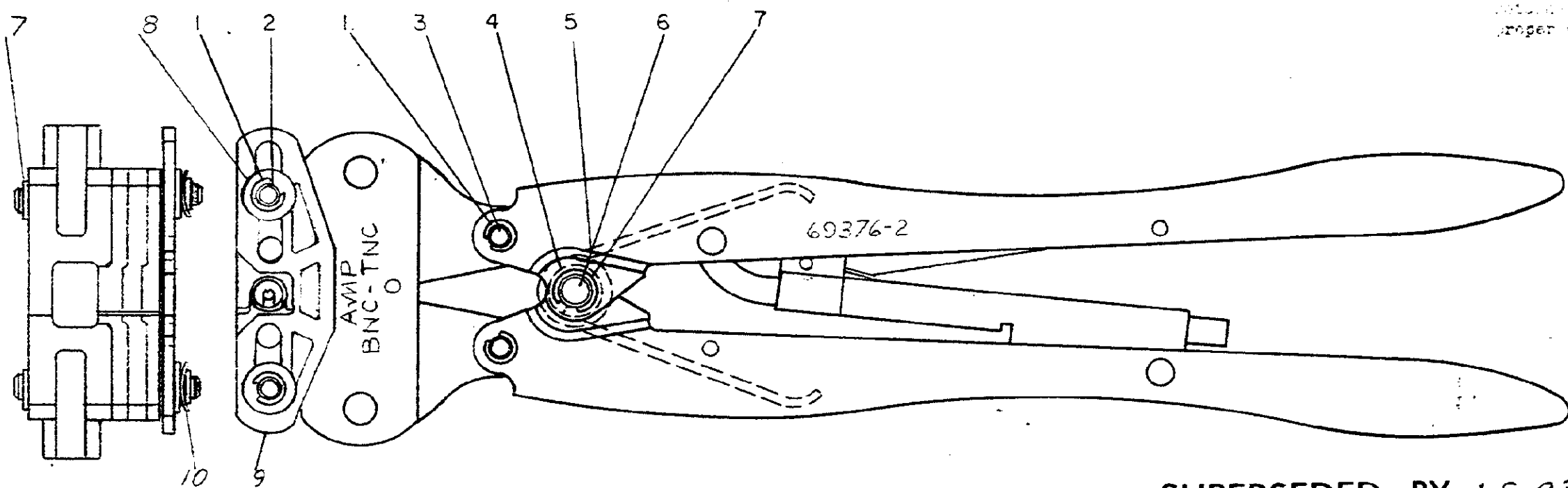


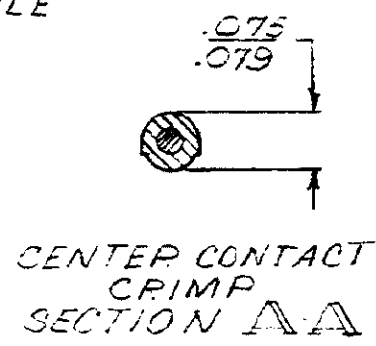
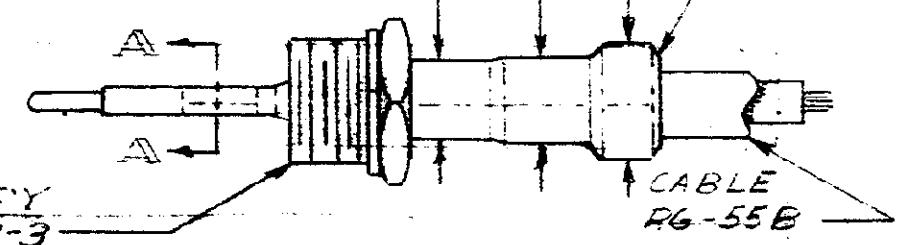
Use this tool on all parts after
 1967. Do not use on parts
 manufactured prior to 1967.
 proper Crimp-Crimp adjustment



SUPERSEDED BY LS 2349

INSULATION CRIMP $\frac{.224}{.238}$ $\frac{.310}{.333}$ GASKET CRIMP

BRAID CRIMP $\frac{.211}{.221}$



PLUG ASSY
 #2-330953-3

METHOD OF GAGING CRIMP DIMS
 THE CRIMP DIMS APPLY ONLY
 TO THE ABOVE COMBINATIONS
 ON A CRIMPED PRODUCT.

2	24058-5	CURVED WASHER	10
1	307089-2	LOCATOR	9
2	125115-1	WASHER	8
4	21045-6	RING - RETAINING	7
1	300449	PIN - RETAINING	6
1	39364	SPRING	5
1	39366	COLLAR	4
2	58183	PIN - RETAINING	3
2	1-306055-3	PIN - RETAINING	2
6	21045-3	RING - RETAINING	1

PRINTED BY AMP 12887 10/67
 DIMENSIONS IN INCHES. DO NOT SCALE PRINT
 18

REV	DESCRIPTION	DATE	BY	CHK
E1	SUP BY I.S. 2349	3-30-67	PL	
E	REVISED	3-21-67	PL	
D	REVISED	1-25-67	BS	
C	REVISED	1-25-67	PL	
B	REVISED	1-25-67	PL	
A	REVISED	8-9-67	BS	

REV	DESCRIPTION	DATE	BY	CHK
2	69376-2			

2	DWG SIZE	NUMBER	NAME	REMARKS	REV
©1967 BY AMP INCORPORATED. ALL RIGHTS RESERVED AMP PRODUCTS COVERED BY PATENTS AND/OR PATENTS PENDING.		CUSTOMER COPY REFERENCE ONLY AMP INCORPORATED HARRISBURG, PENNA.		CLASS TYPE BNC-TNC	
DR <i>A. Flaymick 3-16-67</i> CHK <i>R. J. Hughes 3-29-67</i> DE APP <i>E. J. ... 4-10-67</i>		WIRE - RANGE - INSULATION RG-55 B		TOLERANCE EXCEPT AS NOTED = .015 = 1° 0 SCALE 1-1 LOC M/B NO 69376-2	
HAND TOOL ASSEMBLY				NAME	

8 7 6 5 4 3 2 1