

CUSTOMER PRINT

PART NUMBER: SF4281-XXPG-3ES

**NOTES:**

1. FINISHED CONNECTOR ASSEMBLIES ARE PACKED INTO PARTITION BOX, TOTAL (25) PIECES PER BOX. BOX IS LABELED WITH CONXALL PART NUMBER AND DATE CODE.
2. HEX NUTS ARE BULK PACKED IN POLY BAG. PROTECTIVE CAP AND O-RING ARE INSTALLED ON CONNECTOR.
3. MASTER KEY AT 12 O'CLOCK PANEL HOUSING FLAT AT 9 O'CLOCK TERMINATING END OF CONNECTOR IS FILLED WITH BLACK EPOXY.
4. DIMENSIONS ARE REFERENCE UNLESS OTHERWISE SPECIFIED.
5. DIMENSIONS IN BRACKETS [ ] ARE METRIC.

**CUSTOMER APPROVAL**

THIS DOCUMENT CONTAINS CONFIDENTIAL INFORMATION PROPRIETARY TO CONXALL CORPORATION. ANY REPRODUCTION, DISCLOSURE, OR USE OF THIS DOCUMENT / INFORMATION IS EXPRESSLY PROHIBITED UNLESS AUTHORIZED IN WRITING BY CONXALL CORPORATION.

APPROVED BY: \_\_\_\_\_

DATE: \_\_\_\_\_

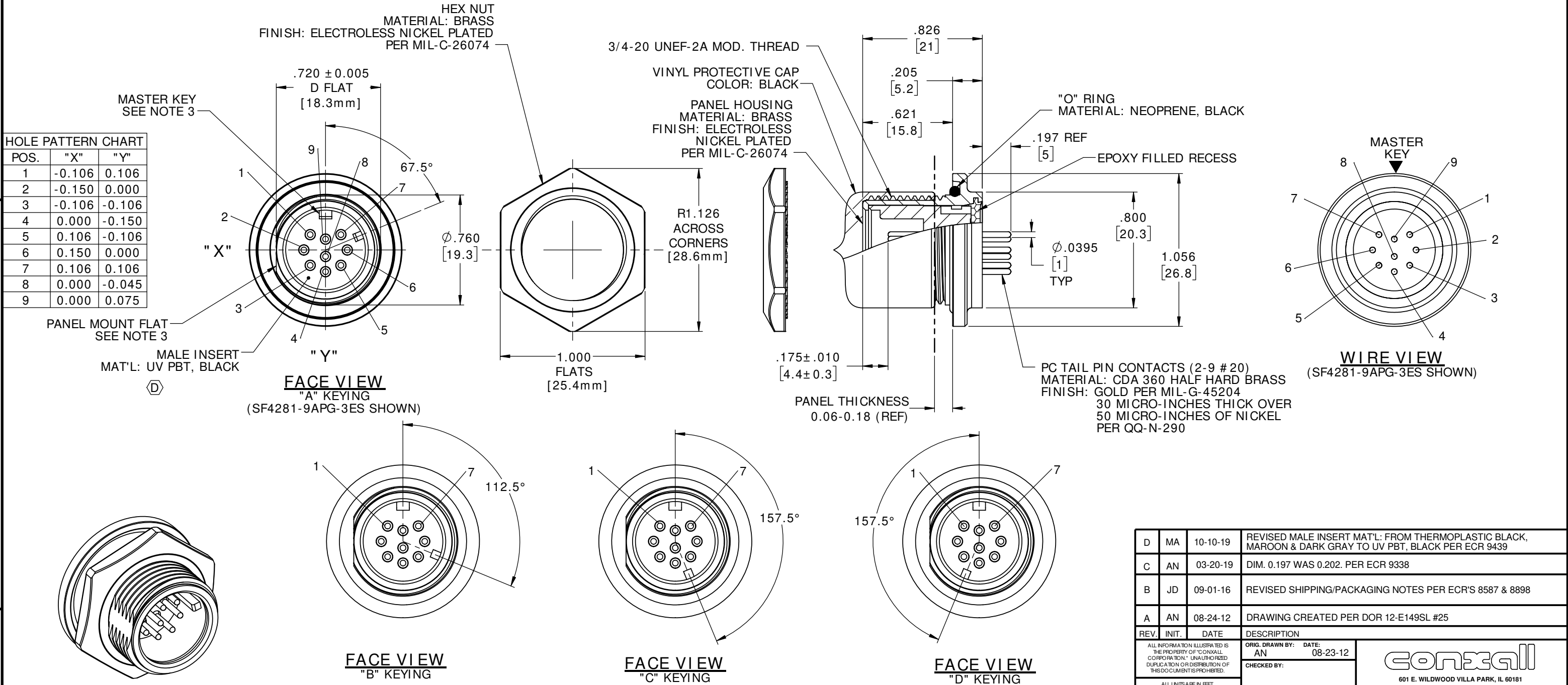
		HOLE PATTERN								
ASS'Y P/N		1	2	3	4	5	6	7	8	9
SF4281-2XPG-3ES	---	OPEN	---	---	---	---	OPEN	---	---	---
SF4281-3XPG-3ES	OPEN	---	---	OPEN	---	---	---	OPEN	---	---
SF4281-4XPG-3ES	OPEN	---	OPEN	---	OPEN	---	---	OPEN	---	---
SF4281-5XPG-3ES	OPEN	---	OPEN	OPEN	OPEN	---	---	OPEN	---	---
SF4281-6XPG-3ES	OPEN	OPEN	OPEN	---	OPEN	OPEN	OPEN	OPEN	---	---
SF4281-7XPG-3ES	OPEN	OPEN	OPEN	OPEN	OPEN	OPEN	OPEN	OPEN	---	---
SF4281-8XPG-3ES	OPEN	OPEN	OPEN	OPEN	OPEN	OPEN	OPEN	OPEN	OPEN	---
SF4281-9XPG-3ES	OPEN	OPEN	OPEN	OPEN	OPEN	OPEN	OPEN	OPEN	OPEN	OPEN

KEYING: A  
B  
C  
D

NUMBER OF CONTACTS

"---" HALF CLOSED FROM MATING END

POS.	"X"	"Y"
1	-0.106	0.106
2	-0.150	0.000
3	-0.106	-0.106
4	0.000	-0.150
5	0.106	-0.106
6	0.150	0.000
7	0.106	0.106
8	0.000	-0.045
9	0.000	0.075



DIMENSIONS IN BRACKETS [ ] ARE METRIC.

RoHS COMPLIANT

D	MA	10-10-19	REVISED MALE INSERT MAT'L: FROM THERMOPLASTIC BLACK, MAROON & DARK GRAY TO UV PBT, BLACK PER ECR 9439
C	AN	03-20-19	DIM. 0.197 WAS 0.202. PER ECR 9338
B	JD	09-01-16	REVISED SHIPPING/PACKAGING NOTES PER ECR'S 8587 & 8898
A	AN	08-24-12	DRAWING CREATED PER DOR 12-E149SL #25
REV.	INIT.	DATE	DESCRIPTION
ALL INFORMATION ILLUSTRATED IS THE PROPERTY OF CONXALL CORPORATION. UNAUTHORIZED DUPLICATION OR DISTRIBUTION OF THIS DOCUMENT IS PROHIBITED.		ORIG. DRAWN BY: AN	DATE: 08-23-12
ALL UNITS ARE IN FEET, INCHES, FRACTION OF INCHES, AND DECIMALS.		CHECKED BY:	
- CRITICAL CHARACTERISTIC FLAG PER SPEC. XXXX		APPROVED BY:	
SCALE: NTS	SIZE: B	SHEET: 1 OF 1	TITLE: PANEL CONNECTOR ASS'Y (2-9)-#20 PIN CONTACTS SHIELDED MULTI-CON-X STANDARD PRODUCT
FILE: SF4281-XXPG-3ES	DIRECTORY: SLW	PART NUMBER: SF4281-XXPG-3ES	REV: D



601 E. WILDWOOD VILLA PARK, IL 60181