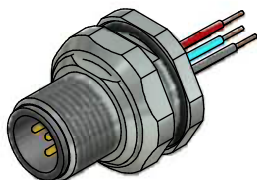


A

**Contact assignment:**

- 1 grey (shielding)
- 2 red (+)
- 3 black (-)
- 4 white (CAN H)
- 5 blue (CAN L)



**Technical specification:**

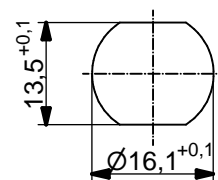
|                                     |                           |
|-------------------------------------|---------------------------|
| Rated voltage:<br>IEC 61076-2-101   | 250 V                     |
| Current rating:<br>IEC 61076-2-101  | 4 A at 40°C               |
| Insulation resistance:<br>IEC 60512 | >=100 MΩ                  |
| Pollution degree:<br>IEC 60664-1    | 3/2                       |
| Degree of protection:<br>IEC 60529  | IP 67, in mated condition |
| Temperature range:<br>IEC 60664-1   | -30°C ... +80°C           |
| Mating cycles:<br>IEC 60512-9a      | >=100                     |

**Materials:**

|                  |                           |
|------------------|---------------------------|
| Contact:         | CuZn                      |
| Contact plating: | Nickel, gold plated       |
| Contact carrier: | PBT GF, UL 94             |
| Sealing:         | NBR                       |
| Counternut:      | CuZn, nickel plated       |
| Socket housing:  | CuZn, nickel plated       |
| Grouting:        | Polyurethane-resin, UL 94 |

**Installation specification:**

|                          |   |
|--------------------------|---|
| Recommended torque:      | 1-1,2 Nm  |
| Conec installation tool: | Torque wrench:<br>36-000200<br>Insert across flats 19:<br>36-000250 |



Minimum wall thickness 1,5mm,  
alternativ panel cut-out d=16,1

| Part no: | Description:                 | Pos | Length L: | Wire:          |
|----------|------------------------------|-----|-----------|----------------|
| 43-01368 | SAL - DN - 12 - FSH5.3 - 0,5 | 5   | 0,5m      | AWG 24 PVC, UL |
| 43-xxxxx | SAL - DN - 12 - FSH5.3 - ... | 5   | x         |                |

DO NOT ALTER CAD DRAWING BY HAND  
Directive 2002/95/EC RoHS compliant

Index: b 17.08.11 fro Ä3914  
Data sheet revised, technical specification changed, Sleeve side B removed

|                    |   |
|--------------------|---|
| tolerance of wire: | L ≤ 0,5m: L + 20mm<br>L > 0,5m: L + 4%      |
| general tolerance: | 0 ± 0,50mm<br>0,0 ± 0,25mm<br>0,00 ± 0,10mm |

THIS DRAWING MAY NOT BE COPIED OR REPRODUCED IN ANY WAY, AND MAY NOT BE PASSED ON TO A THIRD PARTY WITHOUT WRITTEN PERMISSION. OWNERSHIP AND COPYRIGHT OF CONEC GmbH

dim. in mm

|                |         |
|----------------|---------|
| date           | name    |
| drawn 05.11.98 | Fromm   |
| appd. 05.01.08 | Mankopf |

**CONEC**®

title:  
**Male socket M12x1 with wire,  
backmounting, Device-Net**

dwg no:  
**43K1A809**

part no: