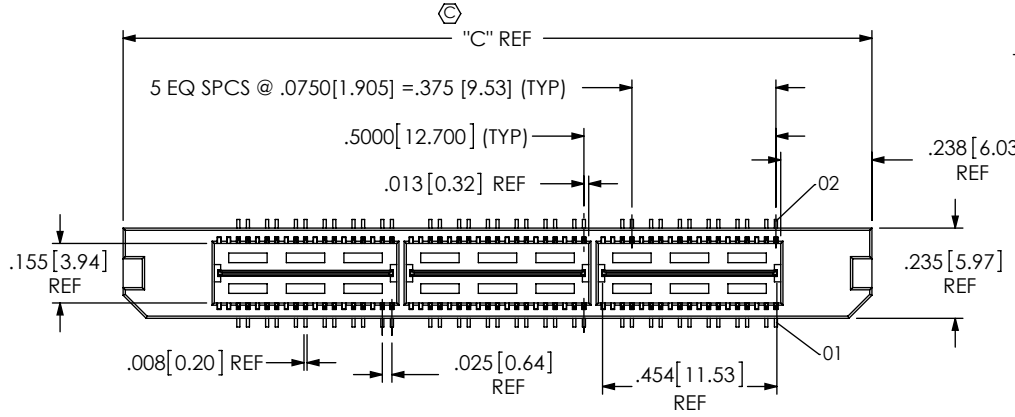


DO NOT SCALE FROM THIS PRINT

MIT-XXX-XX-X-D-DP-XX



- No OF POSITIONS**
-012, -024, -036, -048, -060, -072, -084 (PER ROW)
- LEAD STYLE**
-01: .1680 [4.267]
-02: .2861 [7.267]
-03: .4042 [10.267]
-04: .6000 [15.240]
-05: .7080 [17.983]
-06: .8350 [21.209]
- OPTION**
-K: POLYAMIDE FILM PAD (USE K-500-300. SEE FIG. 2, SHEET 2)
-TR: TAPE & REEL (076 POS MAX) (N/A ON STYLE -05, -06, -07, -08)
- BODY STYLE**
-DP: DIFFERENTIAL PAIRS (SEE TABLE 3)
- ROW SPECIFICATION**
-D: DOUBLE (USE MIT-19-XX-D-XX & MITH-19-XX-D-XX)
- No OF BANKS

- PLATING SPECIFICATION**
-F: 3μ" FLASH SELECTIVE GOLD IN CONTACT AREA, MATTE TIN ON TAIL (USE T-1SXX-XX-F & T-1G5-XX-F) (SEE NOTE 10)
-L: 10μ" LIGHT SELECTIVE GOLD IN CONTACT AREA, MATTE TIN ON TAIL (USE T-1SXX-XX-L & T-1G5-XX-L)
-H: 30μ" HEAVY SELECTIVE GOLD IN CONTACT AREA, 3μ" GOLD ON TAIL (USE T-1SXX-XX-H & T-1G5-XX-G)
-C: 50μ" ELECTRO-POLISHED SELECTIVE GOLD IN CONTACT AREA, MATTE TIN ON TAIL (USE T-1SXX-XX-C & T-1G5-XX-L)

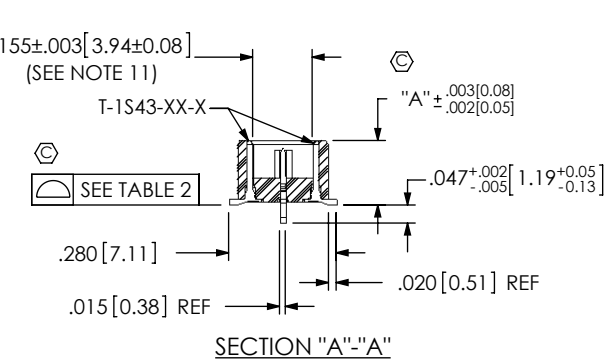
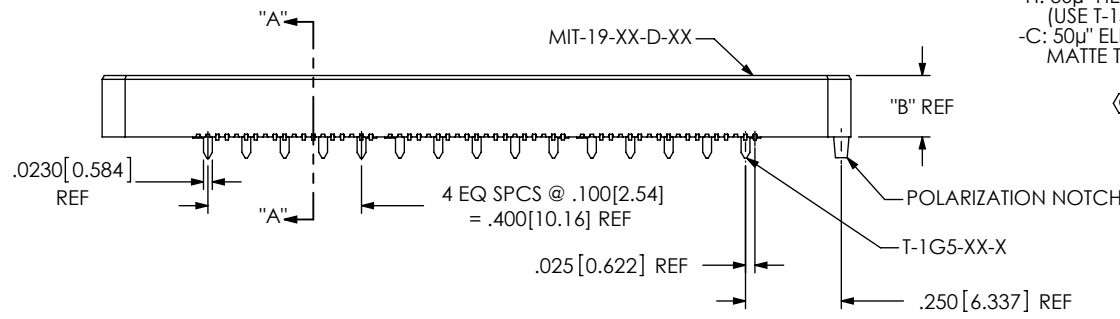
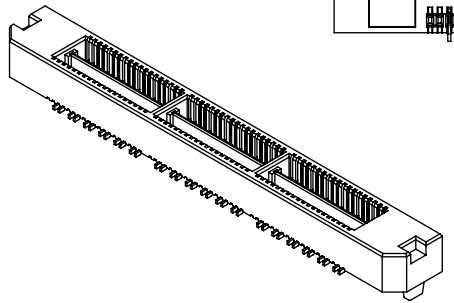


FIG 1
-01 LEAD STYLE
(MIT-036-01-X-D-DP SHOWN)
(STYLE -01 & -02 ONLY)

TABLE 2	
No OF POS	COPLANARITY
-012, -024, -036 -048	.004 [0.10]
-060, -072, -084	.006 [0.15]

TABLE 3	
No. OF POS	"C"
-012	.950 [24.13]
-024	1.450 [36.83]
-036	1.950 [49.53]
-048	2.450 [62.23]
-060	2.950 [74.93]
-072	3.450 [87.63]
-084	3.950 [100.33]

TABLE 1									
STYLE	"A"	"B"	"D"	BODY	TERMINAL	GROUND PLANE	BOTTOM SPACER	MATED HEIGHT WITH MS-01	
-01	.1680 [4.267]	.1600 [4.064]	N/A	MIT-19-01-D-XX	T-1S43-01-X	T-1G5-01-X	N/A	.198 [5.03] REF	
-02	.2861 [7.267]	.2781 [7.064]	N/A	MIT-19-02-D-XX	T-1S43-02-X	T-1G5-02-X	N/A	.316 [8.03] REF	
-03	.4042 [10.267]	.3962 [10.063]	0.1180 [2.997]	MIT-19-02-D-XX	T-1S50-03-X	T-1G5-03-X	MITH-19-01-D-XX	.434 [11.02] REF	
-04	.6000 [15.240]	.5920 [15.037]	0.1180 [2.997]	MIT-19-02-D-XX	T-1S50-04-X	T-1G5-04-X	MITH-19-01-D-XX	.630 [16.00] REF	
-05	.7080 [17.983]	.7000 [17.780]	0.2780 [7.061]	MIT-19-02-D-XX	T-1S50-05-X	T-1G5-05-X	MITH-19-02-D-XX	.738 [18.75] REF	
-06	.8350 [21.209]	.8270 [21.006]	0.2780 [7.061]	MIT-19-02-D-XX	T-1S50-06-X	T-1G5-06-X	MITH-19-02-D-XX	.866 [22.00] REF	



- NOTES:
- ⊕ REPRESENTS A CRITICAL DIMENSION.
 - DELETED COPLANARITY NOTE.
 - MAXIMUM BURR ALLOWANCE: .0015 [0.038] .
 - MINIMUM TERMINAL RETENTION: 6 OZ.
 - MINIMUM GROUND PLANE RETENTION: 1 LB.
 - MAXIMUM ALLOWABLE BOW: .002 [0.05] INCH/INCH AFTER ASSEMBLY.
 - PARTS TO BE MOLDED TO POSITION.
 - NOTE DELETED.
 - NOTE DELETED.
 - NOTE DELETED.
 - L PLATING CAN BE SUBSTITUTED FOR -F PLATING, -L PLATED GROUND PLANE CAN BE SUBSTITUTED FOR -F PLATED GROUND PLANE.
 - PIN CAN EXTEND PAST WALL .003 [0.08] MAX.

UNLESS OTHERWISE SPECIFIED, DIMENSIONS ARE IN INCHES. TOLERANCES ARE:
DECIMALS: .XX: ± .01 [.3] .XXX: ± .005 [.13] .XXXX: ± .0020 [.051]
ANGLES: ± 2°

PROPRIETARY NOTE
THIS DOCUMENT CONTAINS INFORMATION CONFIDENTIAL AND PROPRIETARY TO SAMTEC, INC. AND SHALL NOT BE REPRODUCED OR TRANSFERRED TO OTHER DOCUMENTS OR DISCLOSED TO OTHERS OR USED FOR ANY PURPOSE OTHER THAN THAT WHICH IT WAS OBTAINED WITHOUT THE EXPRESSED WRITTEN CONSENT OF SAMTEC, INC.

MATERIAL: DO NOT SCALE DRAWING SHEET SCALE: 2:1
INSULATOR: LCP, UL94V-0; COLOR: BLACK
TERMINAL: PHOS BRONZE
GROUND PLANE: PHOS BRONZE

DESCRIPTION: .635mm DIFFERENTIAL PAIRS HS TERMINAL ASSEMBLY
DWG. NO. MIT-XXX-XX-X-D-DP-XX
BY: DEAN P 3/02/2001 SHEET 1 OF 2

Samtec
520 PARK EAST BLVD, NEW ALBANY, IN 47150
PHONE: 812-944-6733 FAX: 812-948-5047
e-Mail: info@SAMTEC.com code: 55322

F:\DWG\MISC\MKTG\MIT-XXX-XX-X-D-DP-XX-MKT.SLDDRW

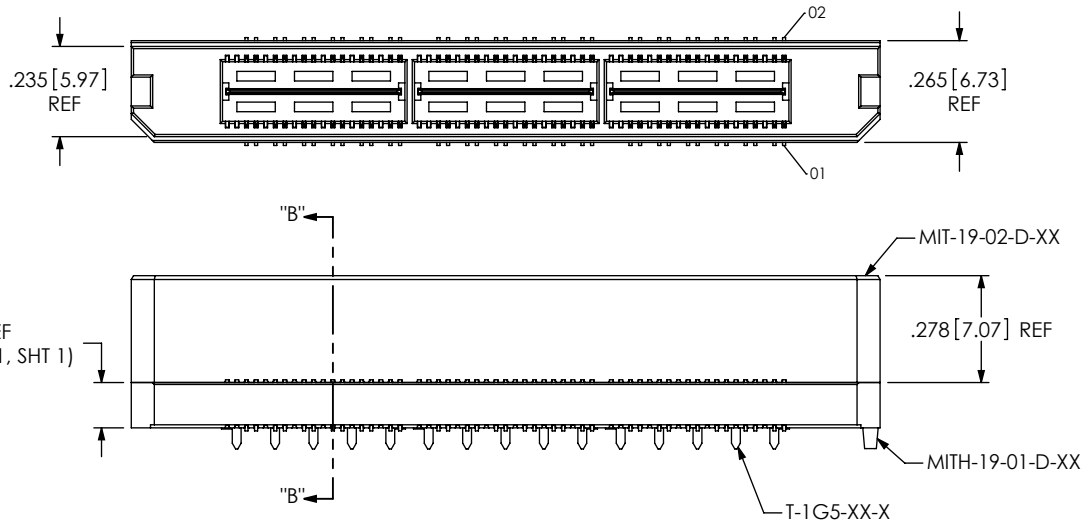
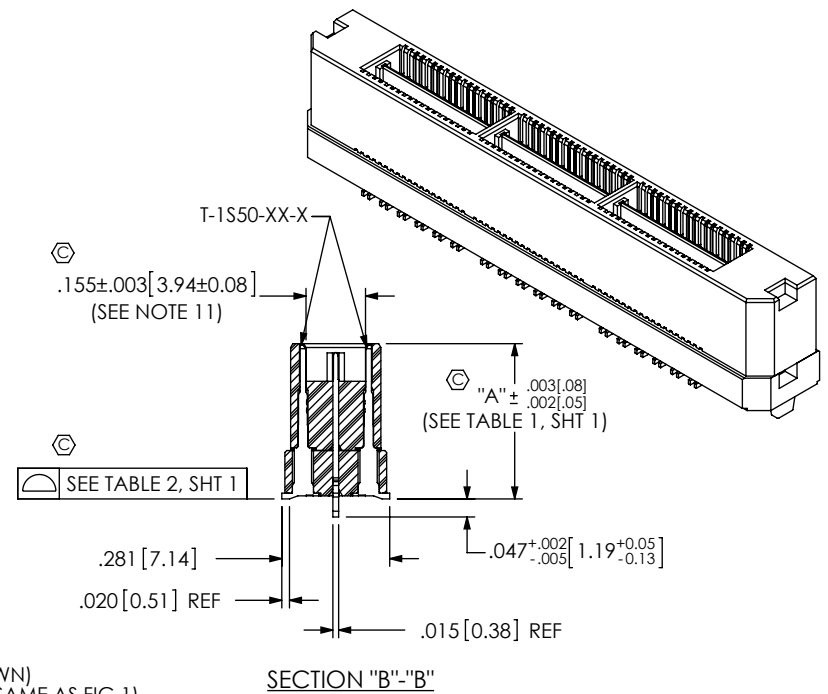


FIG 2
-03 LEAD STYLE
(MIT-036-03-X-D-DP SHOWN)
(DIFFERENT AS SHOWN, OTHERWISE SAME AS FIG 1)
(STYLE -03, -04, -05, & -06)



SECTION "B"-"B"

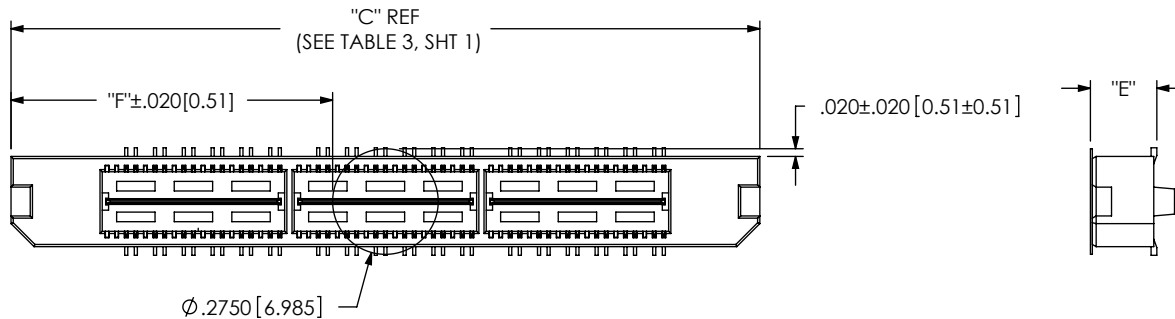
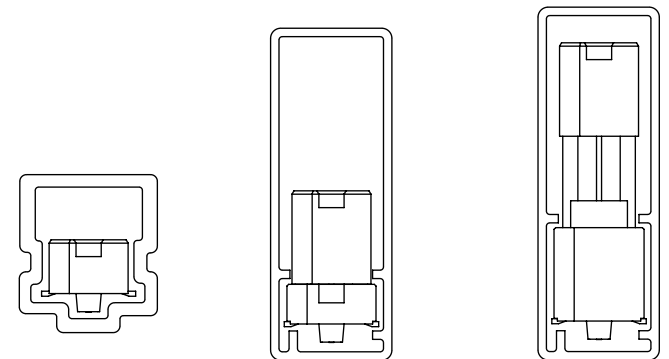


FIG 3
-K: POLYAMIDE FILM PAD OPTION
(USE K-500-300)

PACKAGING VIEW

[PARTS TO HAVE POSITION #1 LOADED
IN SAME DIRECTION AS ARROW ON TUBE]



TUBE: PT-1-24-01-86
PLUG: TP-07 (2)

[LEAD STYLES -01, -02]

TUBE: PT-1-24-01-98
PLUG: TP-26 (2)

[LEAD STYLES -03 & -04]

TUBE: PT-1-24-01-102
PLUG: TP-26 (2)

[LEAD STYLES -05 & -06]

PROPRIETARY NOTE

THIS DOCUMENT CONTAINS INFORMATION
CONFIDENTIAL AND PROPRIETARY TO
SAMTEC, INC. AND SHALL NOT BE REPRODUCED
OR TRANSFERRED TO OTHER DOCUMENTS OR
DISCLOSED TO OTHERS OR USED FOR ANY
PURPOSE OTHER THAN THAT WHICH IT WAS
OBTAINED WITHOUT THE EXPRESSED WRITTEN
CONSENT OF SAMTEC, INC.

DO NOT SCALE DRAWING

SHEET SCALE: 2:1



520 PARK EAST BLVD, NEW ALBANY, IN 47150
PHONE: 812-944-6733 FAX: 812-948-5047
e-Mail: info@SAMTEC.com code: 55322

DESCRIPTION:
.635mm DIFFERENTIAL PAIRS HS TERMINAL ASSEMBLY

DWG. NO. **MIT-XXX-XX-X-D-DP-XX**

BY: DEAN P 3/02/2001 SHEET 2 OF 2

TABLE 4	
STYLE	"E"
-01	.173[4.39]
-02	.291[7.39]
-03	.409[10.39]
-04	.605[15.37]
-05	.713[18.11]
-06	.841[21.36]

TABLE 5	
No. OF POS	"F"
-012	.338 [8.57]
-024	.588 [14.92]
-036	.838 [21.27]
-048	1.088 [27.62]
-060	1.338 [33.97]
-072	1.588 [40.32]
-084	1.838 [46.67]

CRITICAL DIMENSION INSPECTION INSTRUCTION TABLE

ASSEMBLY OPERATION	IN PROCESS INSPECTION
FILL T-1SXX	C1, C2, C3, C4, C5, C6
ADD -K OPTION	C7, C8